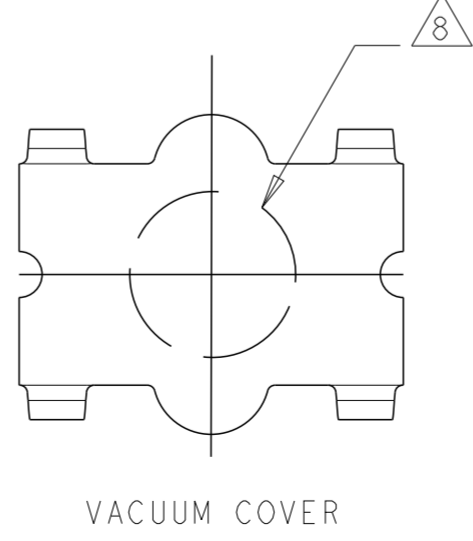
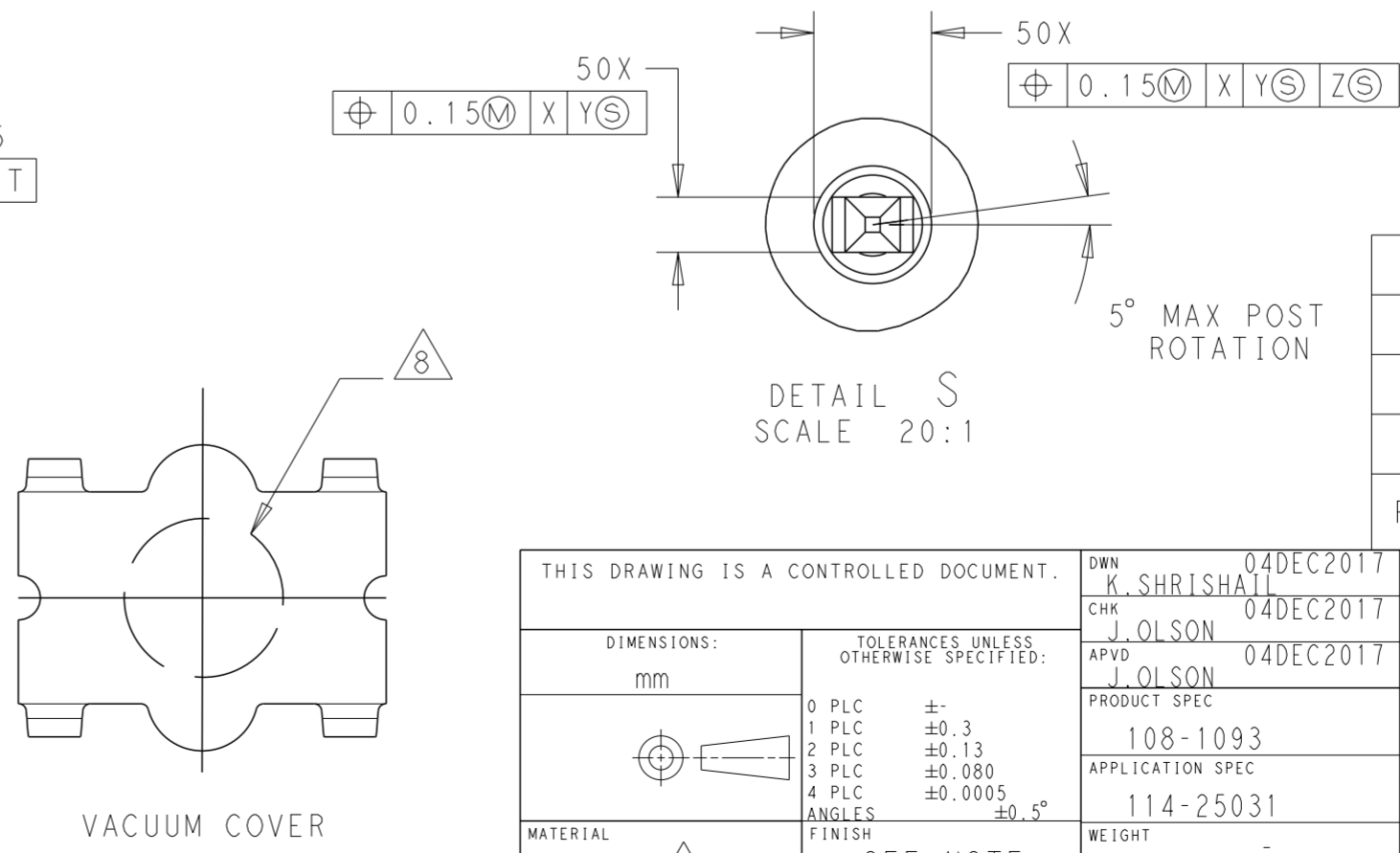
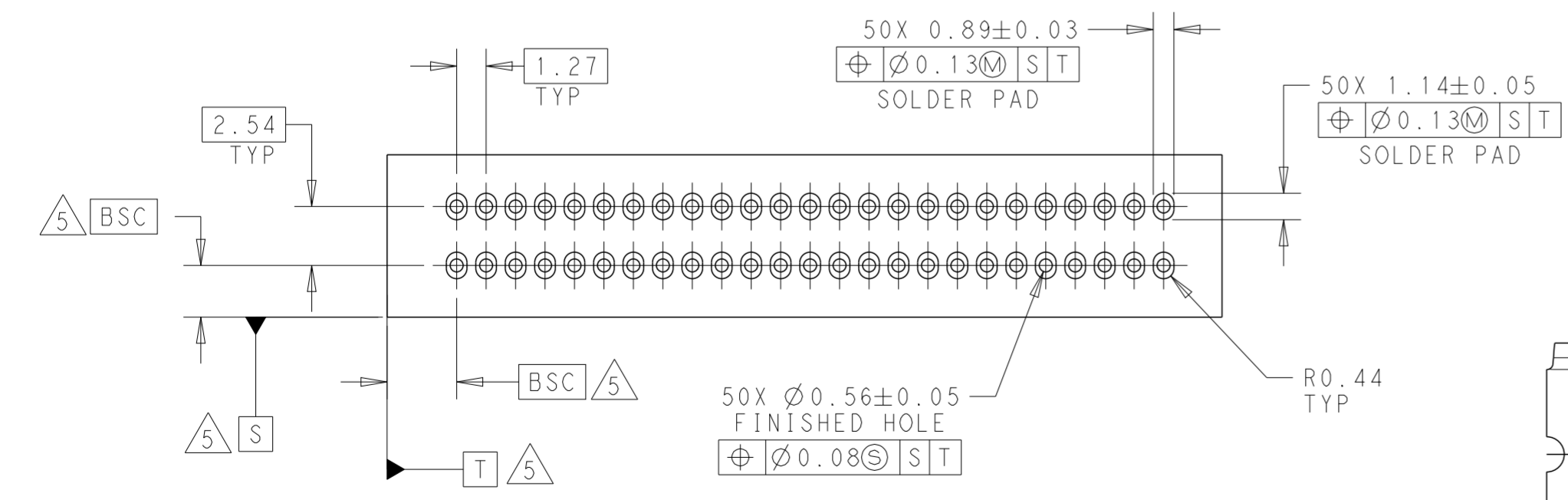
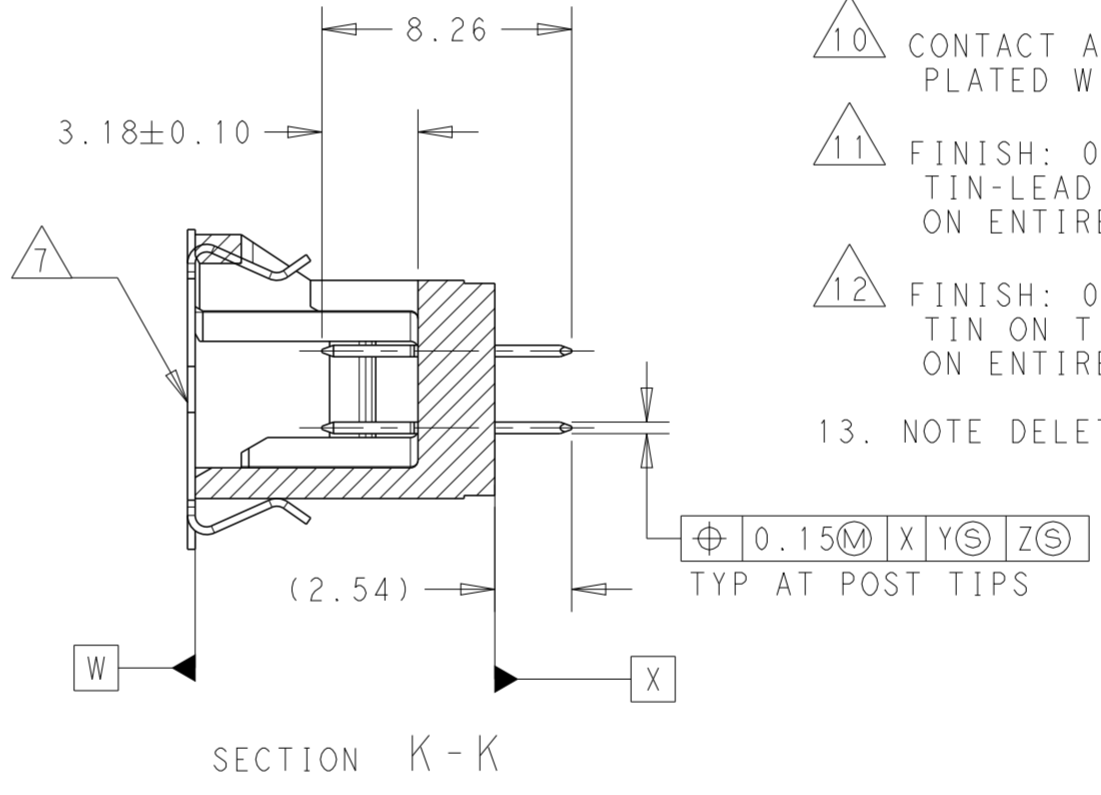
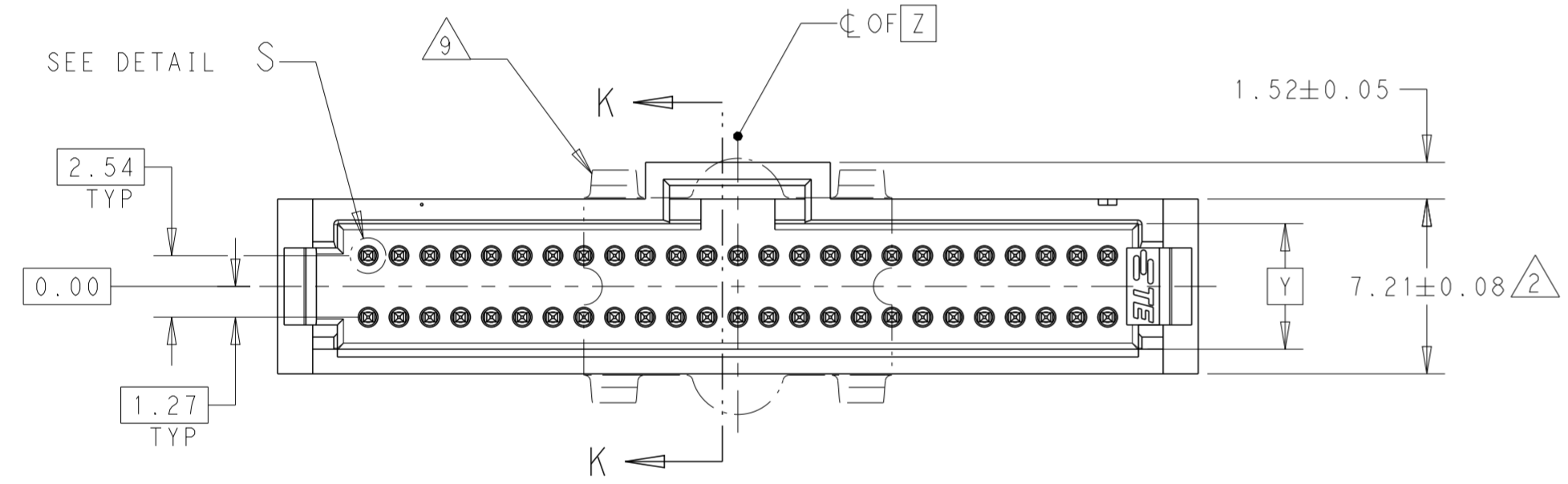
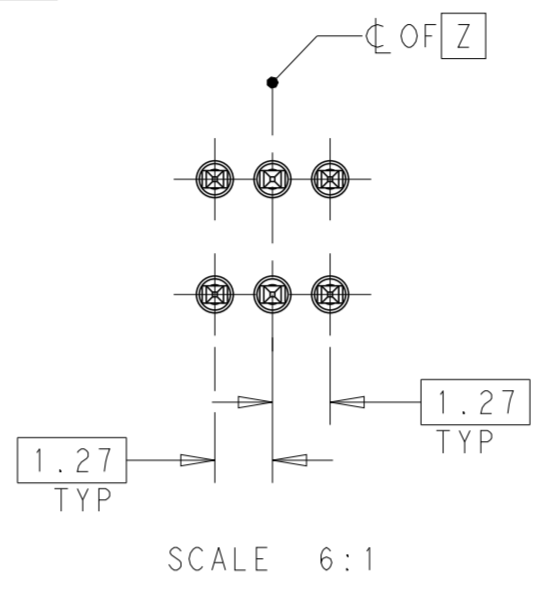
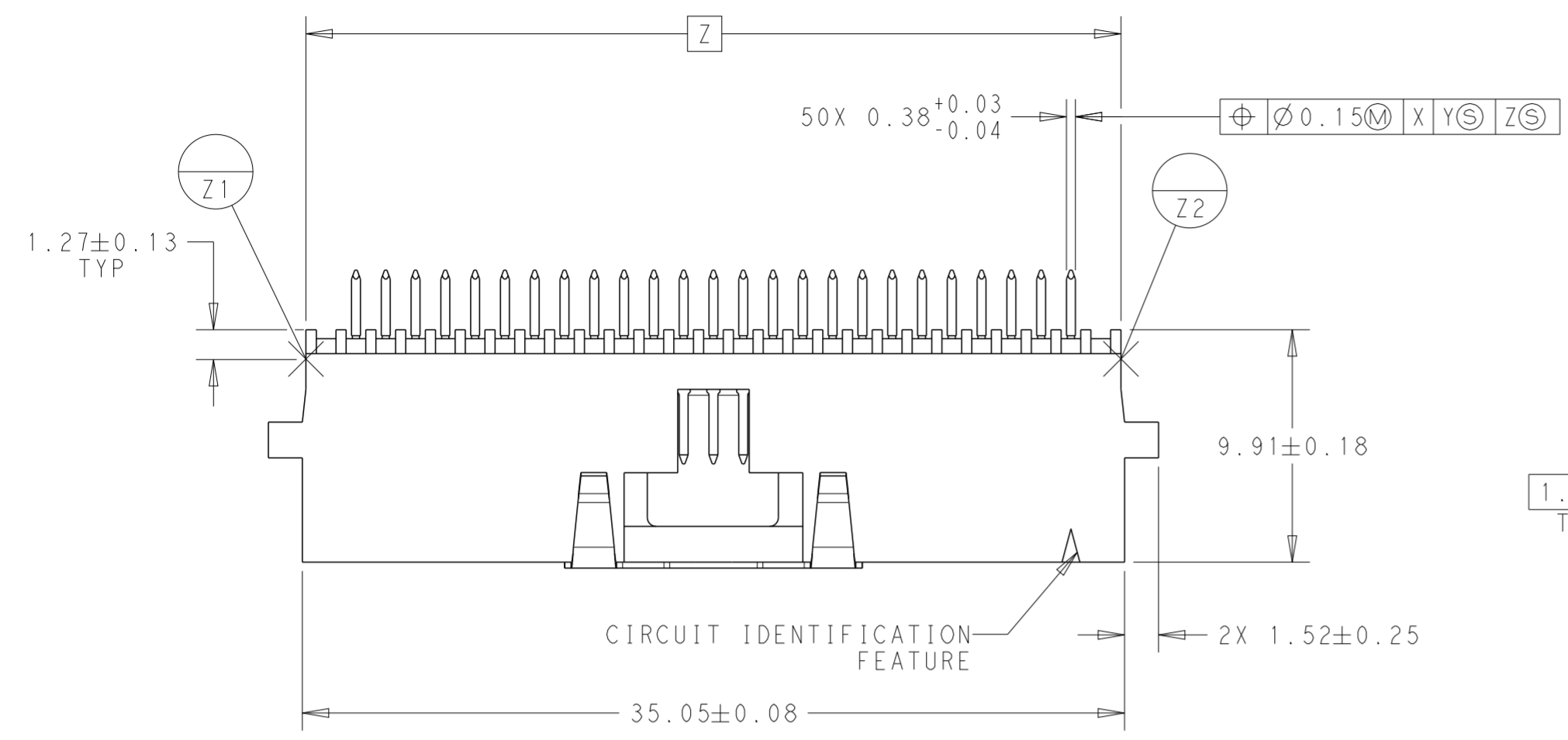


THIS DRAWING IS UNPUBLISHED. RELEASED FOR PUBLICATION 20  
 © COPYRIGHT 20 BY - ALL RIGHTS RESERVED.

REVISIONS				
P	LTR	DESCRIPTION	DATE	DWN APVD
	D	REDRAWN/REVISED PER ECO-17-001755	04DEC2017	KS JO



- 1 CONTACT AREAS PLATED WITH 0.76µm MIN GOLD; SOLDER TAILS PLATED WITH 3.81µm MIN TIN-LEAD, ALL OVER 1.27µm NICKEL
- 2 DIMENSION APPLIES AT BASE OF SHROUD
- 3. NOTE DELETED.
- 4. PACKAGED IN TAPE & REEL PER EIA-481 SPECIFICATIONS. SEE CHART FOR TAPE WIDTHS.
- 5 DATUMS AND BASIC DIMENSIONS ESTABLISHED BY CUSTOMER.
- 6 HOUSING:LCP, COLOR-BLACK. POST: COPPER ALLOY. VACUUM COVER: ALUMINUM.
- 7 VACUUM COVER DESIGNED FOR 4 DIA. NOZZLE. VACUUM COVER TO BE REMOVED AFTER SOLDERING.
- 8 6.75 MIN TARGET AREA FOR VACUUM PICK-UP.
- 9 VACUUM COVER SHOWN IN PHANTOM LINE.
- 10 CONTACT AREAS PLATED WITH 0.76µm MIN GOLD; SOLDER TAILS PLATED WITH 3.81µm MIN TIN, ALL OVER 1.27µm NICKEL
- 11 FINISH: 0.03µm MIN GOLD ON GOLD PLATED AREA, 3.81µm MATTE TIN-LEAD ON TIN PLATED AREA. UNDER PLATING TO BE 1.27µm NICKEL ON ENTIRE CONTACT. GOLD AND TIN PLATING MAY NOT OVERLAP.
- 12 FINISH: 0.03µm MIN GOLD ON GOLD PLATED AREA, 3.81µm MATTE TIN ON TIN PLATED AREA. UNDER PLATING TO BE 1.27µm NICKEL ON ENTIRE CONTACT. GOLD AND TIN PLATING MAY NOT OVERLAP.
- 13. NOTE DELETED.

12	72	50	7-147380-1
10	72	50	5-147380-1
11	72	50	2-147380-1
1	72	50	147380-2
FINISH	TAPE WIDTH	NO OF POSN	PART NUMBER

THIS DRAWING IS A CONTROLLED DOCUMENT.

DIMENSIONS: mm	TOLERANCES UNLESS OTHERWISE SPECIFIED:	DWN K.SHRISHALL 04DEC2017	TE Connectivity
		CHK J. OLSON 04DEC2017	
		APVD J. OLSON 04DEC2017	
		PRODUCT SPEC 108-1093	
MATERIAL	FINISH SEE NOTE	APPLICATION SPEC 114-25031	NAME HEADER ASSEMBLY, VERTICAL, DUAL ROW, System 50, AMPMODU
		WEIGHT -	SIZE A2
		CUSTOMER DRAWING	CAGE CODE 00779
			DRAWING NO C-147380
			RESTRICTED TO -
			SCALE 4:1 SHEET 1 OF 1 REV D