

4

3

2



1

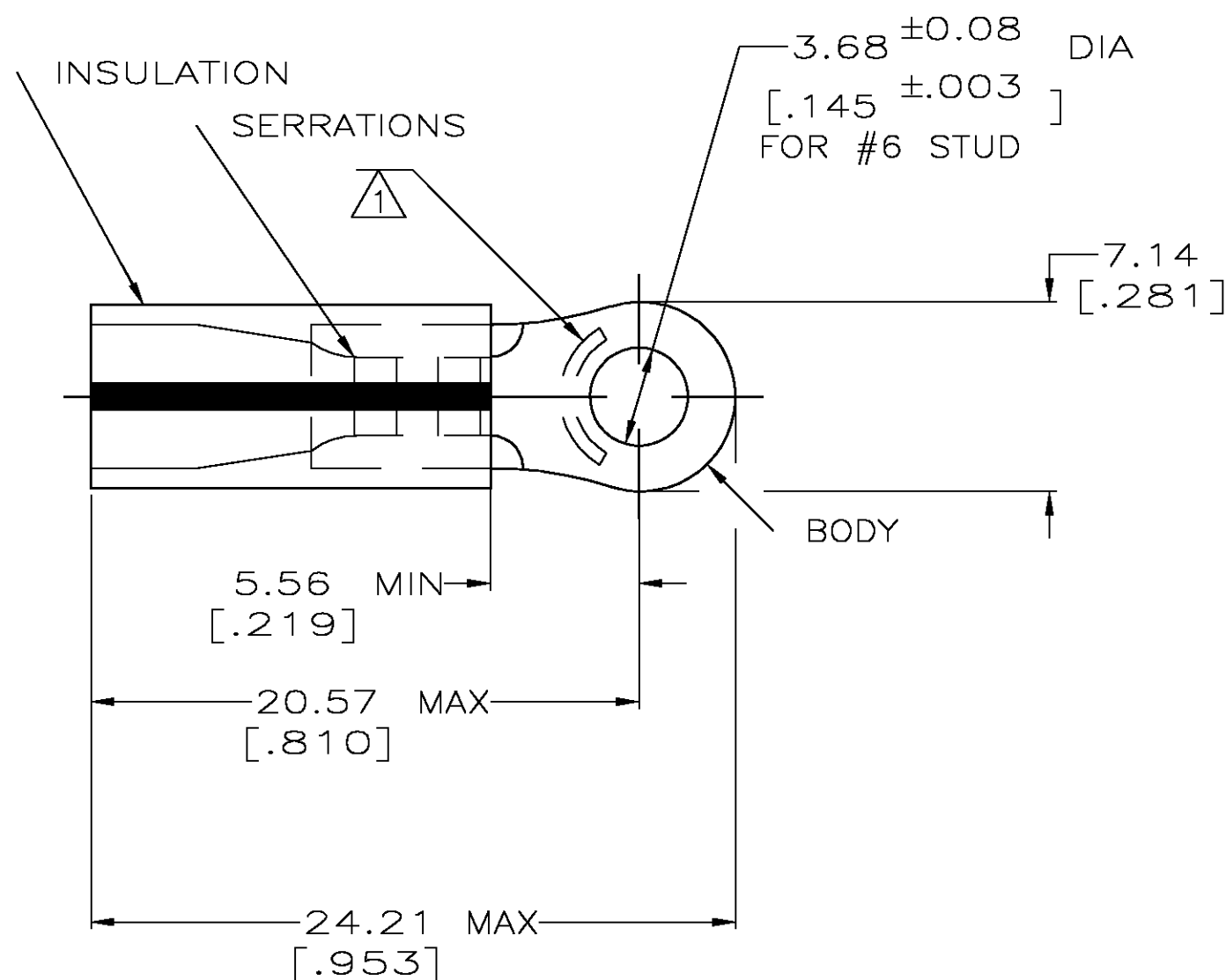
THIS DRAWING IS UNPUBLISHED.

RELEASED FOR PUBLICATION

© COPYRIGHT - BY TYCO ELECTRONICS CORPORATION. ALL RIGHTS RESERVED.

LOC	DIST	REVISIONS				
P	LTR	DESCRIPTION	DATE	DWN	APVD	
G	14	REV PER 0G3A-0656-04	20AUG04	JR	TM	

<b>AMP</b> WIRE RANGE	 Listed FILE E13288	 LR7189 Certified
16-14HD AWG SOLID OR STRANDED	16-14HD AWG SOLID OR STRANDED	16-14HD AWG SOLID OR STRANDED



- 1 STAMP AMP 16-14HD\* APPROX AS SHOWN
- 2 WIRE INSULATION DIA: .105-.200
- 3 TONGUE MATERIAL THK: 1.22 ±0.05 [.048 ±.002]
- 4 MATERIAL: BODY - CU PER ASTM B152  
SLEEVE - PVC,  
COLOR - YELLOW W/BLK STRIPE

5000	ON TAPE, REEL	2-34821-1
-	LOOSE PIECE	34821
QTY	PACKAGE TYPE	PART NO.

## AMP INCORPORATED CUSTOMER SERVICE SYSTEMS

FOR ADDITIONAL  
PRODUCT INFORMATION OR  
COPIES OF DRAWINGS  
AND TECHNICAL DOCUMENTS

PRODUCT INFORMATION CENTER  
1-800-522-6752

FOR APPLICATION  
TOOLING INFORMATION

TOOLING ASSISTANCE CENTER  
1-800-722-1111

FOR ORDER ENTRY

1-800-526-5142

THIS DRAWING IS A CONTROLLED DOCUMENT FOR  
AMP INCORPORATED. IT IS SUBJECT TO CHANGE  
AND THE CONTROLLING ENGINEERING ORGANIZATION  
SHOULD BE CONTACTED FOR THE LATEST REVISION.

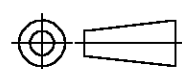
MAX RECOMMENDED OPERATING  
TEMPERATURE:  
105°C [221°F]

VOLTAGE RATING:  
N/A

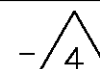
CIRCULAR MIL AREA:  
1.04-2.62mm² [2,050-5,180]  
SOLID OR STRANDED

THIS DRAWING IS A CONTROLLED DOCUMENT.

DIMENSIONS:  
MM[INCHES]



MATERIAL



TOLERANCES UNLESS  
OTHERWISE SPECIFIED:

0 PLC ± -  
1 PLC ± -  
2 PLC ± 0.20[.008]  
3 PLC ± -  
4 PLC ± -  
ANGLES ± -

FINISH

TIN PER ASTM B545

DWN 09/29/92

DK SCHRUM

CHK 11/10/92

RE HERSEY

APVD 11/10/92

M BARNABA

PRODUCT SPEC

108-1034

APPLICATION SPEC

NOT AVAILABLE

WEIGHT

CUSTOMER DRAWING

**tyco**  
**Electronics**

Tyco Electronics Corporation  
Harrisburg, Pa 17105-3608

NAME

TERMINAL, RING TONGUE, PLASTI-GRIP

SIZE

CAGE CODE

DRAWING NO

RESTRICTED TO

A3 00779 C-34821

SCALE 4:1

SHEET 1 OF 1

REV G

# Mouser Electronics

Authorized Distributor

Click to View Pricing, Inventory, Delivery & Lifecycle Information:

[TE Connectivity:](#)

[34821](#)