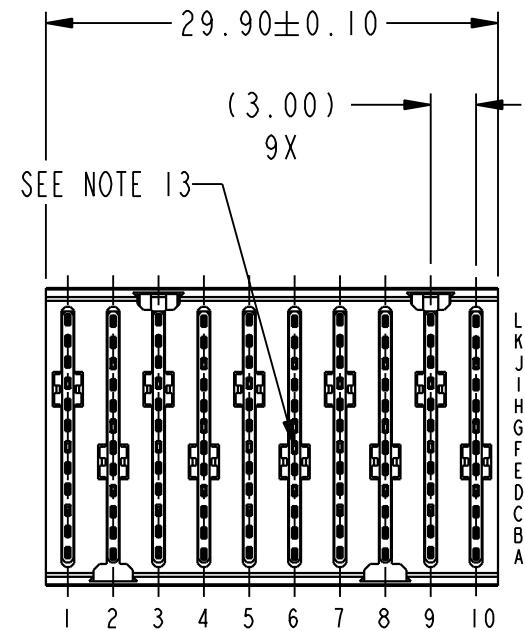
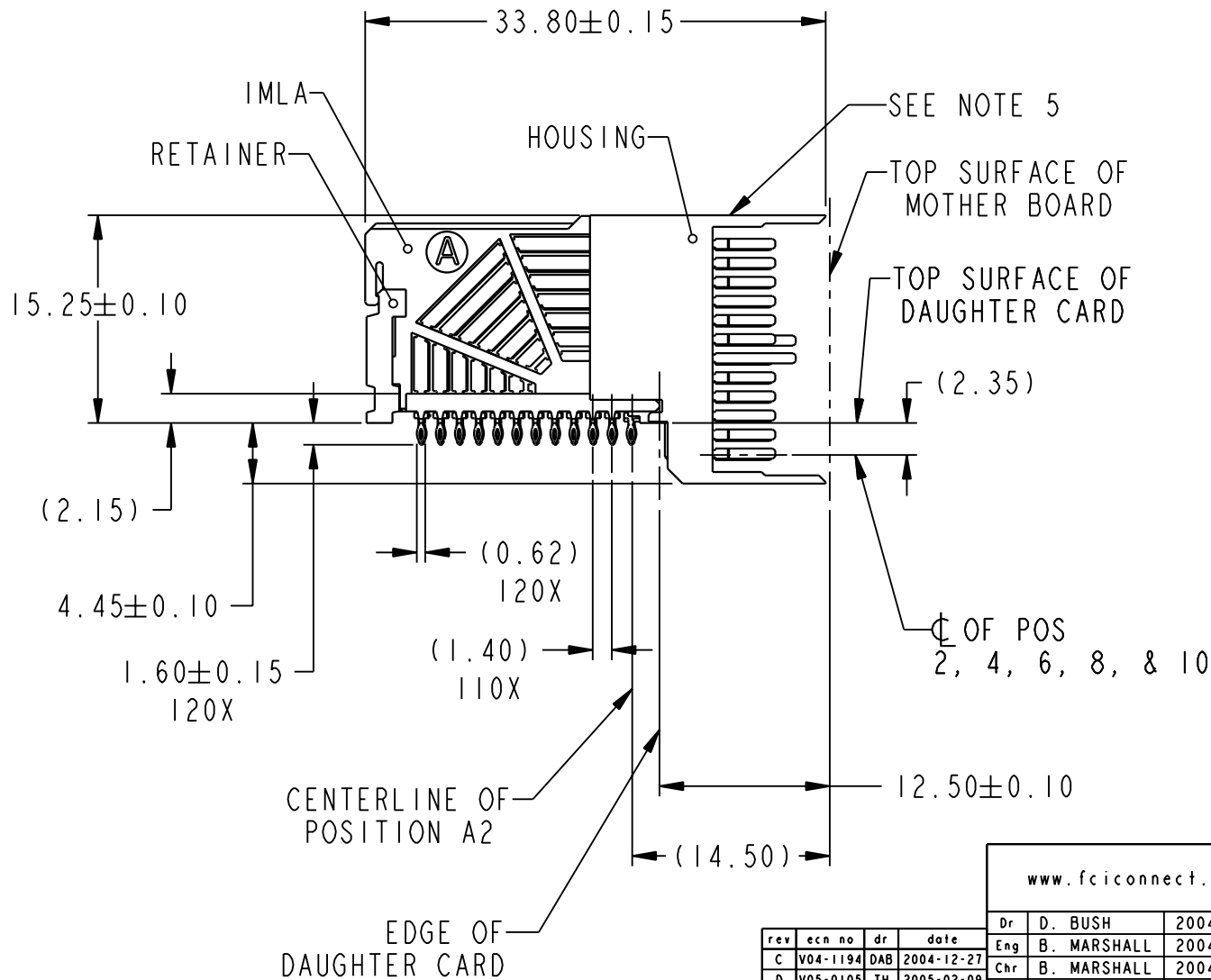



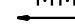




Copyright FCI.

Product number  
SEE TABLE, SHEET 5



rev	ecn no	dr	date
C	V04-1194	DAB	2004-12-27
D	V05-0105	TH	2005-02-09
E	V05-0226	MRS	2005-03-07
F	V05-0792	SAW	2005-08-18
G	V06-0209	LRJ	2006-03-01
H	V06-0531	SCS	2006-06-07
J	V06-0956	WJS	2006-09-13

www.fciconnect.com			surface 3.2 / tolerance std ASME Y14.5 ✓ ASME Y14.5 -		projection 	MM 		
			TOLERANCES UNLESS OTHERWISE SPECIFIED			A4		
Dr	D. BUSH	2004-10-13	ANGULAR	LINEAR			0.X	±
Eng	B. MARSHALL	2004-10-13					0.XX	±
Chr	B. MARSHALL	2004-10-13	0° ±°	0.XXX			±	ECN
Appr	B. MARSHALL	2004-10-13	Product family AirMax VS			Spec ref		
		title AirMax VS R/A HEADER ASSY PRESS-FIT, 120 POS, 30MM			dwg no 10035514		Rev. J	
		catalog no -			CUSTOMER		sheet 1 of 5	

REV F - 2006-04-17

3PDM: Rev:J

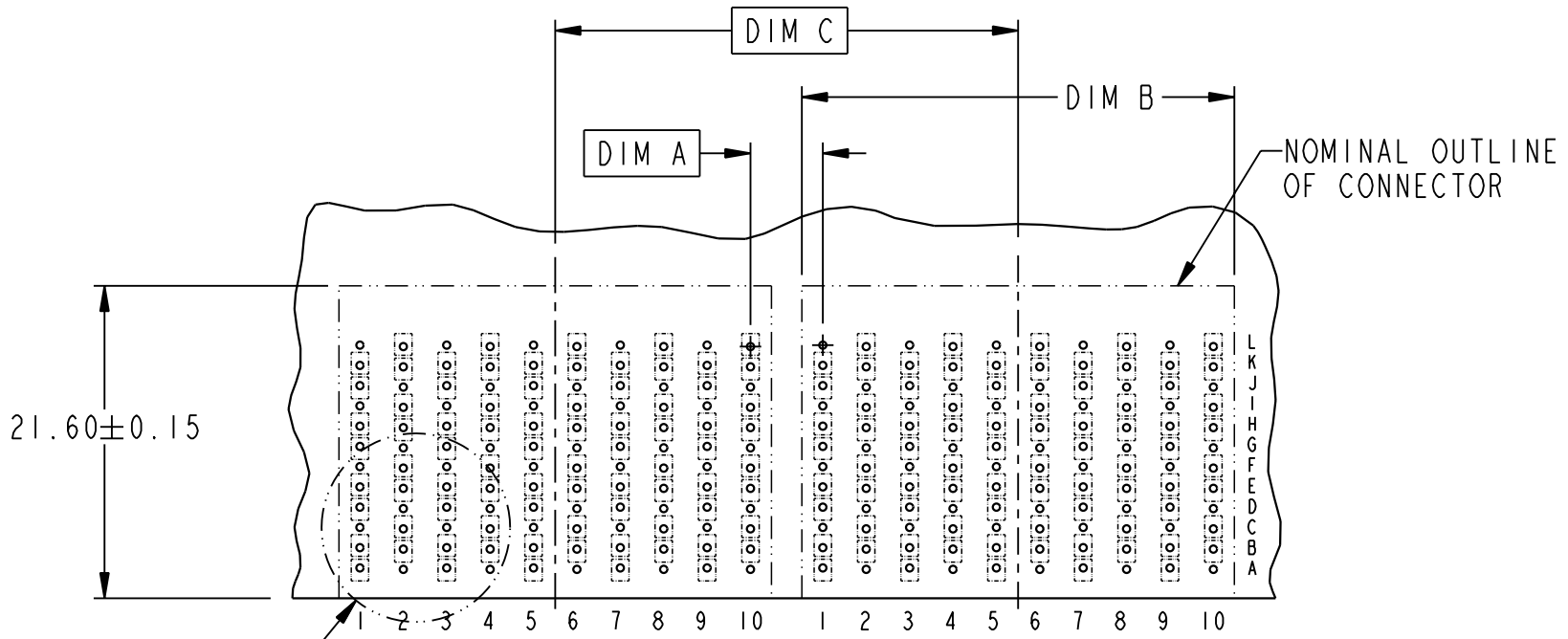
STATUS:Released

4Printed: Dec 01, 2010



Copyright FCI.

DESCRIPTION	DIM A	DIM B	DIM C
2-30MM MODULES PLACED END-TO-END	3.00	29.90 2X	30.00
1-30MM MODULE & 1-32MM MODULE PLACED END-TO-END	4.00	29.90 1X & 31.90 1X	31.00



RECOMMENDED PCB LAYOUT  
FOR DIFFERENTIAL APPLICATIONS  
COMPONENT SIDE  
(TWO ADJACENT FOOTPRINTS SHOWN)  
NOTES 6 & 7



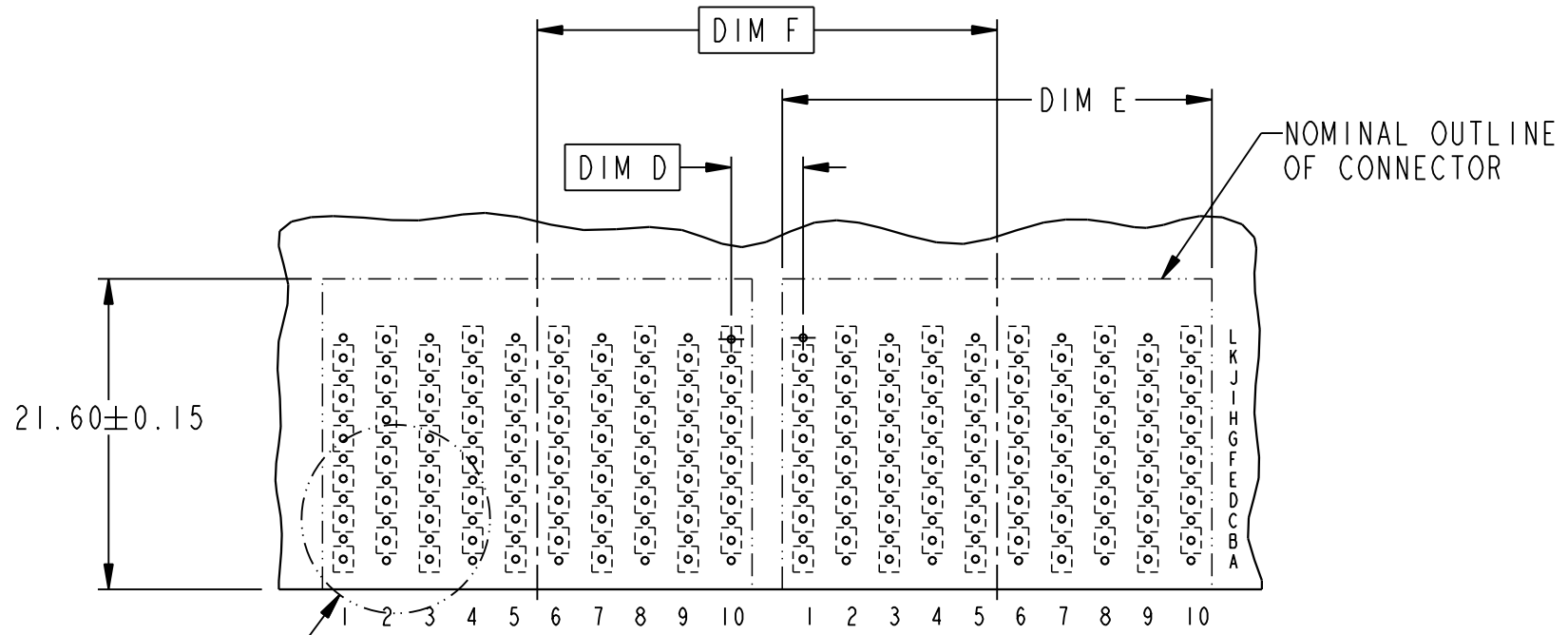
title AirMax VS R/A HEADER ASSY  
PRESS-FIT, 120 POS, 30MM  
catalog no -

dwg no 10035514  
Rev. J  
CUSTOMER sheet 2 of 5



Copyright FCI.

DESCRIPTION	DIM D	DIM E	DIM F
2-30MM MODULES PLACED END-TO-END	3.00	29.90 2X	30.00
1-30MM MODULE & 1-32MM MODULE PLACED END-TO-END	4.00	29.90 1X & 31.90 1X	31.00



RECOMMENDED PCB LAYOUT  
FOR SINGLE ENDED APPLICATIONS  
COMPONENT SIDE  
(TWO ADJACENT FOOTPRINTS SHOWN)  
NOTES 6 & 7



title	AirMax VS R/A HEADER ASSY PRESS-FIT, 120 POS, 30MM	dwg no	10035514	Rev.	J
catalog no	-	CUSTOMER	sheet 3 of 5		



Copyright FCI.

SEE NOTE 9  
 $\varnothing 0.10$   
ALL HOLES

ANTIPAD WIDTH =  
 $3.0 - (4 \text{ TRACES} + 3 \text{ SPACES})$   
TYP

3.00 TYP

GND POSITION  
(0.100)

3.200  
TYP.

2.000  
 $\varnothing$  OF POS  
2, 4, 6, 8, & 10

1.40 11X

2.100  
 $\varnothing$  OF POS  
1, 3, 5, 7, & 9

DETAIL A  
SCALE 4:1

ANTIPAD WIDTH =  
 $3.0 - (4 \text{ TRACES} + 3 \text{ SPACES})$   
TYP

3.00 TYP

GND POSITION  
(0.100)

SEE NOTE 9  
 $\varnothing 0.10$   
ALL HOLES

1.800 TYP

1.40 11X

2.100  
 $\varnothing$  OF POS  
1, 3, 5, 7, & 9

DETAIL B  
SCALE 4:1

2.000  
 $\varnothing$  OF POS  
2, 4, 6, 8, & 10



title AirMax VS R/A HEADER ASSY  
PRESS-FIT, 120 POS, 30MM  
catalog no -

dwg no 10035514  
Rev. J  
CUSTOMER sheet 4 of 5

A

PART NUMBER	PRESS-FIT TAIL PLATING TYPE	SHORT DETECT CONTACT
10035514-101	TIN/LEAD ALLOY OVER NICKEL	NO
10035514-101LF	TIN OVER NICKEL (LEAD FREE)	
10035514-111	TIN/LEAD ALLOY OVER NICKEL	YES (SEE NOTE 13)
10035514-111LF	TIN OVER NICKEL (LEAD FREE)	

## NOTES:

B

1. CONNECTOR MATERIALS:  
HOUSING & RETAINER: HIGH TEMP THERMOPLASTIC, NATURAL, UL94V-0  
IMLA PLASTIC: HIGH TEMP THERMOPLASTIC, BLACK, UL94V-0  
CONTACT: COPPER ALLOY

2. CONTACT PLATING:  
SEPARABLE INTERFACE:  
PERFORMANCE-BASED PLATING, QUALIFIED TO MEET THE  
REQUIREMENTS OF FCI PRODUCT SPECIFICATION GS-12-239,  
INCLUDING TELCORDIA GR-1217-CORE (NOVEMBER 1995)  
CENTRAL OFFICE  
PRESS-FIT TAILS: SEE TABLE

3. PRODUCT SPECIFICATION: GS-12-239

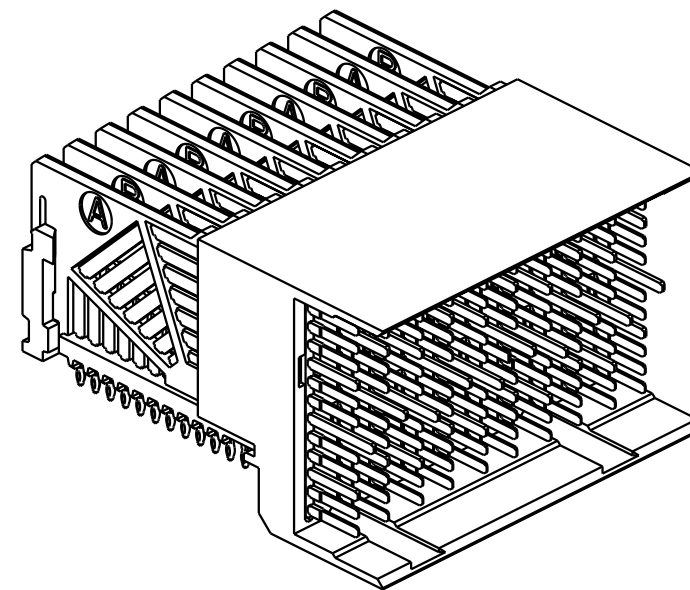
4. APPLICATION SPECIFICATION: GS-20-035

5. PRODUCT MARKING, (PART NUMBER & LOT CODE), ON THIS SURFACE
6. REFER TO CUSTOMER DRAWING 10035911 FOR INFORMATION REGARDING  
PCB LAYOUT OF POWER AND GUIDE MODULES RELATIVE TO SIGNAL MODULES

7. POSITIONS F OF ODD NUMBERED COLUMNS AND POSITIONS G  
OF EVEN NUMBERED COLUMNS CORRESPOND TO EARLY MATE HEADER PINS

8. THERE IS NO GROUND BUSSING WITHIN THE CONNECTOR SYSTEM

9. REFER TO CUSTOMER DRAWING 10045979 FOR INFORMATION ON PCB HOLE  
DIAMETERS AND PLATING OPTIONS.



10. THIS PRODUCT MEETS EUROPEAN UNION DIRECTIVES  
AND OTHER COUNTRY REGULATIONS AS DESCRIBED IN  
GS-22-008.
11. THE HOUSING WILL WITHSTAND EXPOSURE TO 260°C  
PEAK TEMPERATURE FOR 40 SECONDS IN A CONVECTION,  
INFRA-RED OR VAPOR PHASE REFLOW OVEN.
12. PACKAGING MEETS GS-14-920 LEAD FREE LABELING  
SPECIFICATION.
13. MATING PIN F6 HAS 0.5mm LESS NOMINAL WIPE THAN  
THE SHORTEST SIGNAL PIN.

C

Copyright FCI.

D



title	AirMax VS R/A HEADER ASSY		dwg no	10035514	Rev J
	PRESS-FIT, 120 POS, 30MM				
catalog no	-	CUSTOMER	sheet 5 of 5		

# Mouser Electronics

Authorized Distributor

Click to View Pricing, Inventory, Delivery & Lifecycle Information:

[FCI / Amphenol:](#)

[10035514-101LF](#)