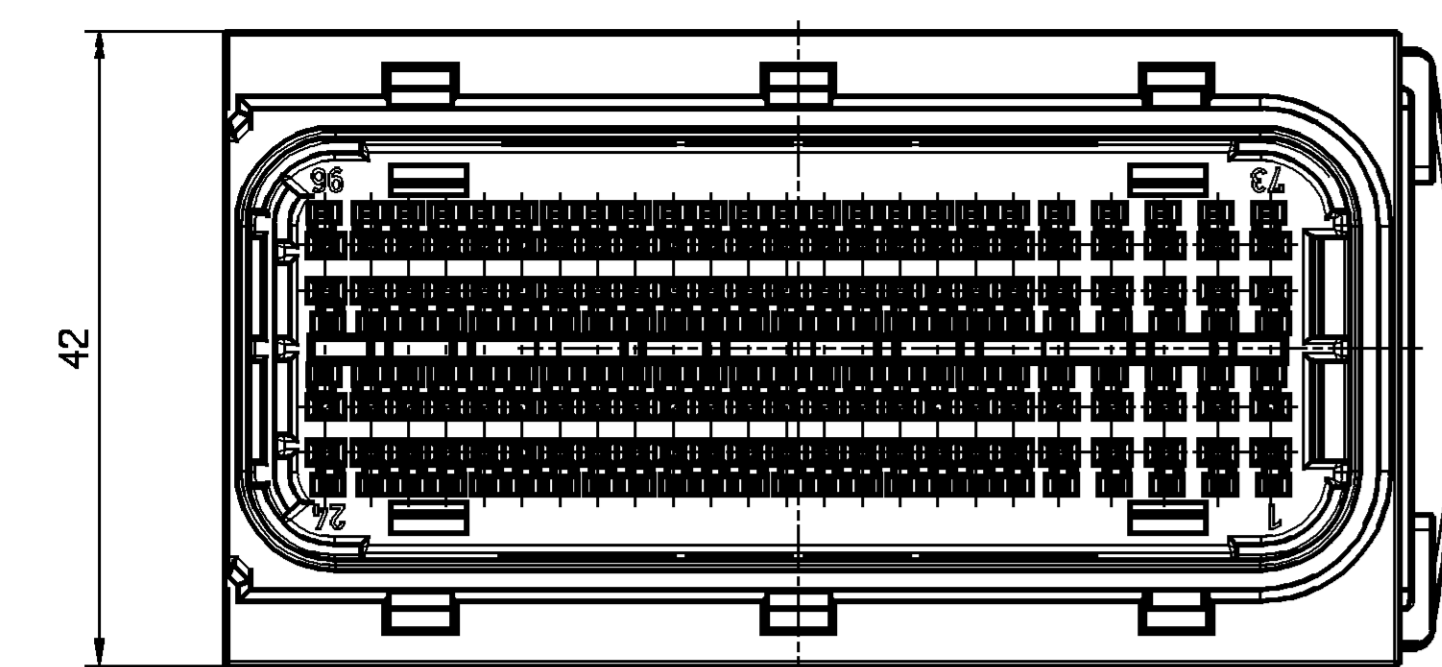
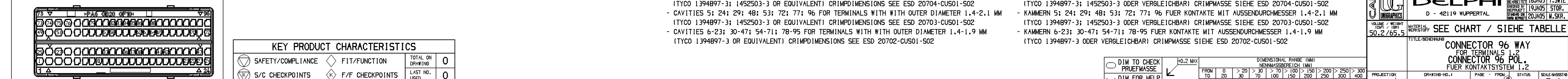
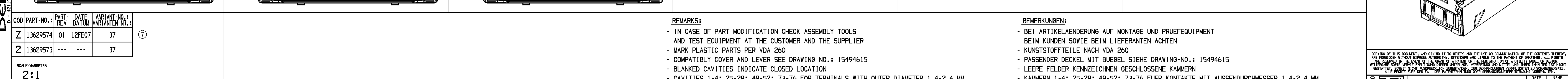
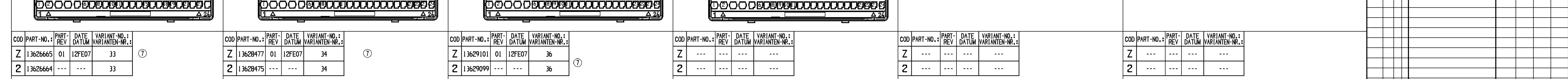
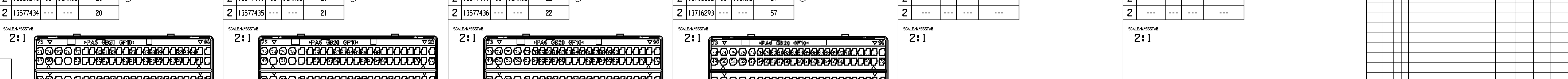
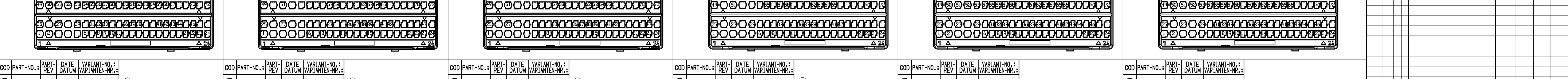
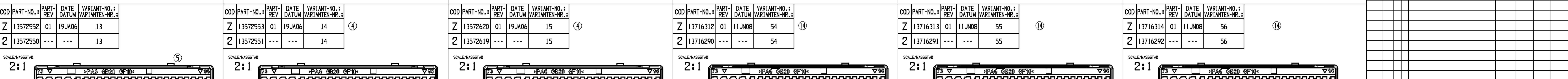
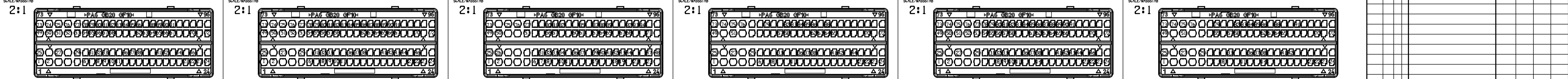
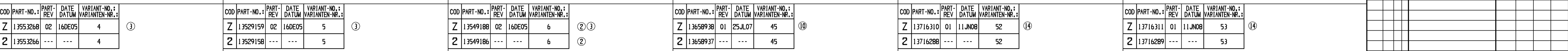
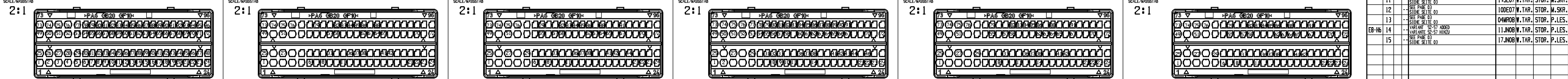


POS. 1 PART-NO.:15494612
CODING / CODIERUNG Z



COD	TITLE	PART-NO.:	PART-REV.	DATE	MOUNT	CUSTOMER-NO.:	MATERIAL	RAL	NOTES
Z	BENENNUNG	SEE CHART	SEE CHART	DATUM	ZEICHNUNG	KUNDENNR.	Werkstoff	Farbcode	BEMERKUNG
1	CONNECTOR 96 WAY CONNECTOR 96 POL.	15494612	---	---	1	---	---	---	CONDITION OF DELIVERY POS. 1-2 ASSEMBLED LIEFERZUSTAND POS. 1-2 MONTIERT
2	RECEPTACLE HOUSING 96 POL. FLÄCHSTECKHÜLSENBEHAUSE 96 POL.	---	---	---	1	---	---	---	ONLY ASSEMBLED PARTS AVAILABLE NUR MONTIERT LIEFERBAR
3	COVER PLATE AND BLOCK SEAL ABDECKPLATTE UND BLOCKDICHTUNG	---	---	---	1	---	---	---	ONLY ASSEMBLED PARTS AVAILABLE NUR MONTIERT LIEFERBAR

COD	PART-NO.:	PART-REV.	DATE	VARIANT-NO.:	COD	PART-NO.:	PART-REV.	DATE	VARIANT-NO.:
Z	15494598	02	16DEC05	0	Z	13553210	02	16DEC05	2
2	15494610	---	---	0	2	13553209	---	---	2
Z	13553268	02	16DEC05	4	Z	13529159	02	16DEC05	5
2	13553266	---	---	4	2	13529158	---	---	5
Z	13572552	01	19JAN06	13	Z	13572553	01	19JAN06	14
2	13572550	---	---	13	2	13572551	---	---	14
Z	13531293	01	06MRO6	20	Z	13577440	01	06MRO6	21
2	13577434	---	---	20	2	13577435	---	---	21
Z	13629574	01	12FEB07	37	Z	13628477	01	12FEB07	34
2	13629573	---	---	37	2	13628475	---	---	34
Z	13651335	01	25JUN07	42	Z	13716313	01	11JUN08	54
2	13651331	---	---	42	2	13716290	---	---	54
Z	13651336	01	25JUN07	43	Z	13716312	01	11JUN08	55
2	13651332	---	---	43	2	13716291	---	---	55
Z	13651337	01	25JUN07	44	Z	13716314	01	11JUN08	56
2	13651333	---	---	44	2	13716292	---	---	56



REMARKS:
- IN CASE OF PART MODIFICATION CHECK ASSEMBLY TOOLS AND TEST EQUIPMENT AT THE CUSTOMER AND THE SUPPLIER
- MARK PLASTIC PARTS PER VDA 260
- COMPATIBLY COVER AND LEVER SEE DRAWING NO.: 15494615
- BLANKED CAVITIES INDICATE CLOSED LOCATION
- CAVITIES 1-4; 25-28; 49-52; 73-76 FOR TERMINALS WITH OUTER DIAMETER 1.4-2.4 MM (TYCO 1394897-3; 1452503-3 OR EQUIVALENT) CRIMPDIMENSIONS SEE ESD 20704-CUS01-502
- CAVITIES 5; 24; 29; 48; 53; 72; 77; 96 FOR TERMINALS WITH OUTER DIAMETER 1.4-2.1 MM (TYCO 1394897-3; 1452503-3 OR EQUIVALENT) CRIMPDIMENSIONS SEE ESD 20703-CUS01-502
- CAVITIES 6-23; 30-47; 54-71; 78-95 FOR TERMINALS WITH OUTER DIAMETER 1.4-1.9 MM (TYCO 1394897-3 OR EQUIVALENT) CRIMPDIMENSIONS SEE ESD 20702-CUS01-502

BEMERKUNGEN:
- BEI ARTIKELÄNDERUNG AUF MONTAGE UND PRUEFEQUIPMENT BEIM KUNDEN SOWIE BEIM LIEFERANTEN ACHTEN
- KUNSTSTOFFTEILE NACH VDA 260
- PASSENDER DECKEL MIT BUEGEL SIEHE DRAWING-NO.: 15494615
- LEERE FELDER KENNZEICHNEN GESCHLOSSENE KAMMERN
- KAMMERN 1-4; 25-28; 49-52; 73-76 FUER KONTAKTE MIT AUSSENDURCHMESSER 1.4-2.4 MM (TYCO 1394897-3; 1452503-3 ODER VERGLEICHBAR) CRIMPMASSSE SIEHE ESD 20704-CUS01-502
- KAMMERN 5; 24; 29; 48; 53; 72; 77; 96 FUER KONTAKTE MIT AUSSENDURCHMESSER 1.4-2.1 MM (TYCO 1394897-3; 1452503-3 ODER VERGLEICHBAR) CRIMPMASSSE SIEHE ESD 20703-CUS01-502
- KAMMERN 6-23; 30-47; 54-71; 78-95 FUER KONTAKTE MIT AUSSENDURCHMESSER 1.4-1.9 MM (TYCO 1394897-3 ODER VERGLEICHBAR) CRIMPMASSSE SIEHE ESD 20702-CUS01-502

KEY PRODUCT CHARACTERISTICS

NO & TYPE	DESCRIPTION	RATIONALE	PITS	ZONE
1	SAFETY/COMPLIANCE	FIT/FUNCTION	0	
2	S/C CHECKPOINTS	F/F CHECKPOINTS	0	
3	TOTAL ON DRAWING		0	
4	LAST NO. USED		0	

DELPHI

CONNECTOR 96 WAY FOR TERMINALS 2 CONECTOR 96 POL. FUER KONTAKTSYSTEM 1,2

PROJECTION	DRAWING-NO.:	PAGE	FROM	STATUS	SCALE
	15494599	01-03	8	KZUS	2:1

REVISION HISTORY

REV	DATE	DESCRIPTION	BY	CHK
01	19JAN06	INITIAL RELEASE	T.SWIE	STOR.
02	21NOV05	VARIANT 11 AND 12 ADDED	V.KAS.	STOR.
03	02JAN06	VARIANT 13-15 ADDED	V.KAS.	STOR.
04	19JAN06	VARIANT 16-17 ADDED	V.KAS.	STOR.
05	02JAN06	VARIANT 18-19 ADDED	V.KAS.	STOR.
06	06MRO6	VARIANT 20-22 ADDED	V.KAS.	STOR.
07	12FEB07	VARIANT 23-24 ADDED	V.KAS.	STOR.
08	20AP07	VARIANT 25-27 ADDED	V.KAS.	STOR.
09	27JAN07	VARIANT 28-29 ADDED	A.STA	STOR.
10	25JUL07	VARIANT 30-31 ADDED	W.TAR.	STOR.
11	19SEP07	VARIANT 32-33 ADDED	W.TAR.	STOR.
12	10OCT07	VARIANT 34-35 ADDED	W.TAR.	STOR.
13	04NOV07	VARIANT 36-37 ADDED	W.TAR.	STOR.
14	11NOV07	VARIANT 38-39 ADDED	W.TAR.	STOR.
15	17NOV07	VARIANT 40-41 ADDED	W.TAR.	STOR.

REVISION HISTORY

REV	DATE	DESCRIPTION	BY	CHK
01	19JAN06	INITIAL RELEASE	T.SWIE	STOR.
02	21NOV05	VARIANT 11 AND 12 ADDED	V.KAS.	STOR.
03	02JAN06	VARIANT 13-15 ADDED	V.KAS.	STOR.
04	19JAN06	VARIANT 16-17 ADDED	V.KAS.	STOR.
05	02JAN06	VARIANT 18-19 ADDED	V.KAS.	STOR.
06	06MRO6	VARIANT 20-22 ADDED	V.KAS.	STOR.
07	12FEB07	VARIANT 23-24 ADDED	V.KAS.	STOR.
08	20AP07	VARIANT 25-27 ADDED	V.KAS.	STOR.
09	27JAN07	VARIANT 28-29 ADDED	A.STA	STOR.
10	25JUL07	VARIANT 30-31 ADDED	W.TAR.	STOR.
11	19SEP07	VARIANT 32-33 ADDED	W.TAR.	STOR.
12	10OCT07	VARIANT 34-35 ADDED	W.TAR.	STOR.
13	04NOV07	VARIANT 36-37 ADDED	W.TAR.	STOR.
14	11NOV07	VARIANT 38-39 ADDED	W.TAR.	STOR.
15	17NOV07	VARIANT 40-41 ADDED	W.TAR.	STOR.

Mouser Electronics

Authorized Distributor

Click to View Pricing, Inventory, Delivery & Lifecycle Information:

[Aptiv:](#)

[15494598](#)