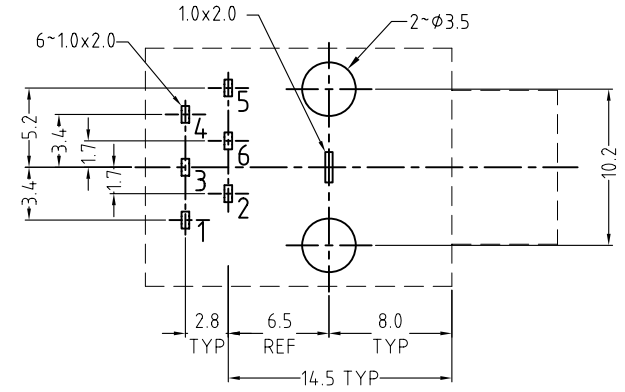
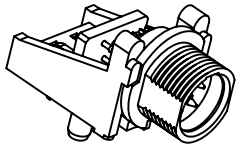


HALF-SECTION

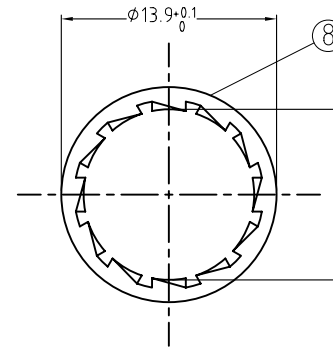
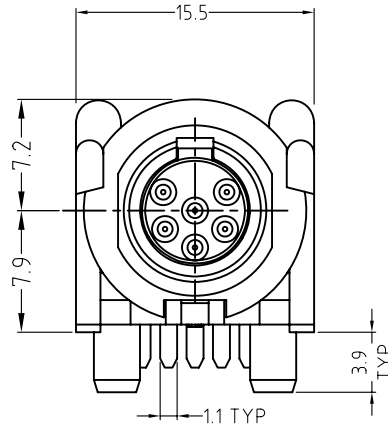
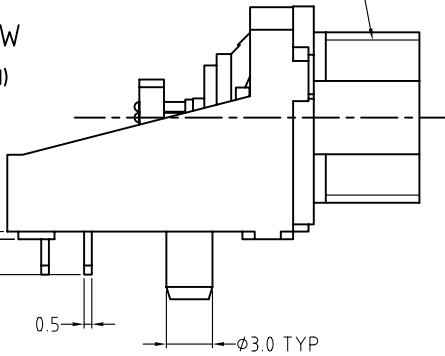


PCB LAYOUT

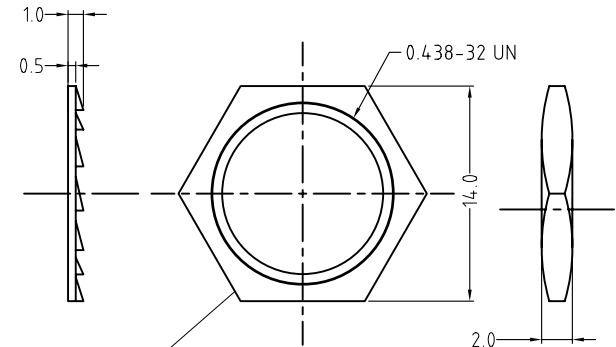


ISO VIEW
(SCALE 1:1)

7/16-32 UN-1A



STAR WASHER



METAL NUT

Specification:

Electrical

Contact Resistance: <0.01 ohm

Insulation Resistance: >500Megaohm

Dielectric Strength: 250VDC

Rated Current: 5A

Mechanical

Mating: >5000 cycles

Insertion/withdrawal Force: >10N & <30N.

Notes:

1. Part must conform to RoHS compliance

2. Plastic parts conform to UL94 V-0 compliant.

ITEM	MATERIAL	MATERIAL	ITEM
1	CHASSIS	PA+30%GF/BLACK, UL 94 V-0	1
2	CONTACTS	BRASS-GOLD PLATED	6
3	PCB	PRINTED CIRCUIT BOARD	1
4	INSULATOR	PPS/BLACK, UL 94 V-0	1
5	HOUSING	C3604/NICKEL PLATED	1
6	CONTACT	BRASS/GOLD PLATED	6
7	CONTACT	SUS 301/TIN PLATING	1
8	WASHER	BRASS-NICKEL PLATED	1
9	METAL NUT	BRONZE-NICKEL PLATED	1

UNLESS OTHERWISE SPECIFIED
TOLERANCE TO BE

LINEAR ANGULAR

X ± 0.5 X* ± 1°

X/X ± 0.1 X*/X* ± 30°

X/X ± 0.05 X*/X* ± 15°

BREAK ALL SHARP EDGES
AND REMOVE ALL BURRS

DO NOT SCALE

DIMENSIONS IN MILLIMETRES

THIS DOCUMENT IS THE PROPERTY OF AMPHENOL AUSTRALIA PTY.
LTD.. NO PART THEREOF MAY BE REPRODUCED AND USED
WITHOUT THE PRIOR WRITTEN CONSENT OF THE OWNER

CAD FILE: 55010613003111

MATL: SEE NOTES

FINISH: SEE NOTES

THRO ANGLE
PROJECTION

SCALE: 2 : 1

DRN: M.N.H

CKD: M.H.

APP'D: M.H.

DATE: 04-09-09

DATE: 13-11-09

DATE: 13-11-09

DATE: 04-09-09

DATE: 13-11-09

DATE: 13-11-09

DATE: 13-11-09

DATE: 13-11-09

DATE: 13-11-09

DATE: 04-09-09

DATE: 13-11-09

DATE: 13-11-09

DATE: 13-11-09

DATE: 13-11-09

DATE: 13-11-09

DATE: 04-09-09

DATE: 13-11-09

DATE: 13-11-09

DATE: 13-11-09

DATE: 13-11-09

DATE: 13-11-09

1	CHANGE PART NUMBER FROM AGxFL TO AGxFL	M.H	13-11-09	8868
0	FIRST ISSUE	M.N.H	04-09-09	----
REV.	CHANGE DETAILS	BY	DATE	CHG/No

TITLE:

MINI XLR 6 PIN MALE

PANEL MOUNT RA PCB

CUSTOMER DRAWING

SIZE: A4

PART No: AG6MCC

Amphenol

Amphenol Australia Pty Ltd, 2 Fireways Blvd, Keysborough, Vic 3173

DRAWING NO.

55010613-003-1

SHEET

1 OF 1

Mouser Electronics

Authorized Distributor

Click to View Pricing, Inventory, Delivery & Lifecycle Information:

[Amphenol:](#)

[AG6MCCH](#)