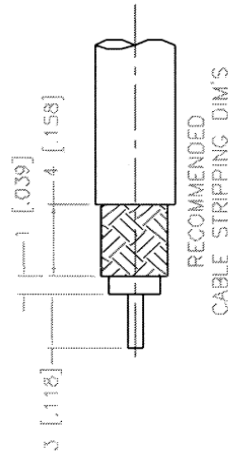
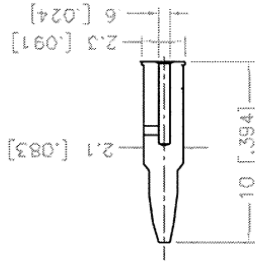
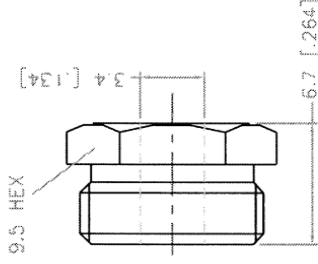
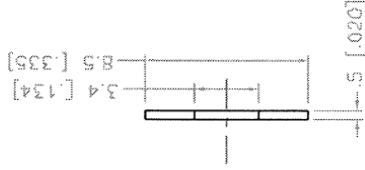
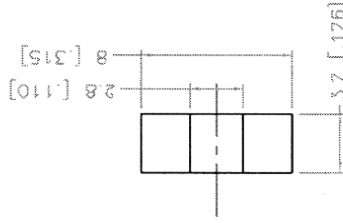
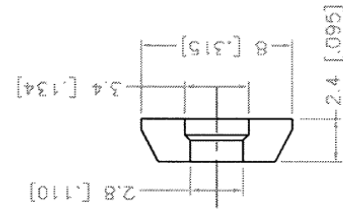
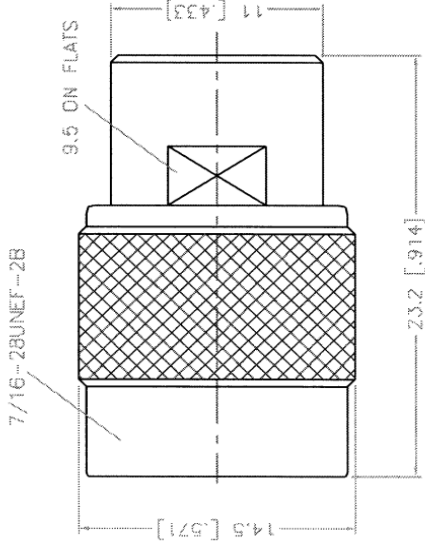


REV.	DATE	DESCRIPTION
NC	12/10/97	INITIAL RELEASE



DESCRIPTION	MATERIAL	FINISH	UNLESS OTHERWISE SPECIFIED DIMENSIONS ARE IN MILLIMETERS DIMENSIONS IN [] ARE IN INCHES FOR CUSTOMER REFERENCE ONLY	APPROVALS	DATE
1 BODY	BRASS	NICKEL	UNLESS OTHERWISE SPECIFIED TOLERANCES FOR MILLIMETERS ARE: 0.5-6 = ± 0.2 6-30 = ± 0.4 30-120 = ± 0.6 120-315 = ± 1 315-1000 = ± 1.6 1000-2000 = ± 2.4	DRAWN	12/10/97
2 INSULATOR	DELTRIN	NATURAL		CHECKED	
3 TOP HAT	BRASS	NICKEL		ISSUED	
4 GASKET	SILICONE	RED			
5 WASHER	BRASS	NICKEL			
6 HEX NUT	BRASS	NICKEL			
7 CONTACT PIN	BRASS	GOLD			
8				DO NOT SCALE DRAWING	



TITLE		TNC CLAMP PLUG
DWG. NO.		RG174, 316 CABLE
SIZE	FSCM NO.	REV.
A	99001	NC
SCALE	PART NO.	DWG. NO.
NA	122402	122402.DWG
SHEET	1	OF 1

Mouser Electronics

Authorized Distributor

Click to View Pricing, Inventory, Delivery & Lifecycle Information:

[Amphenol:](#)

[122402](#)