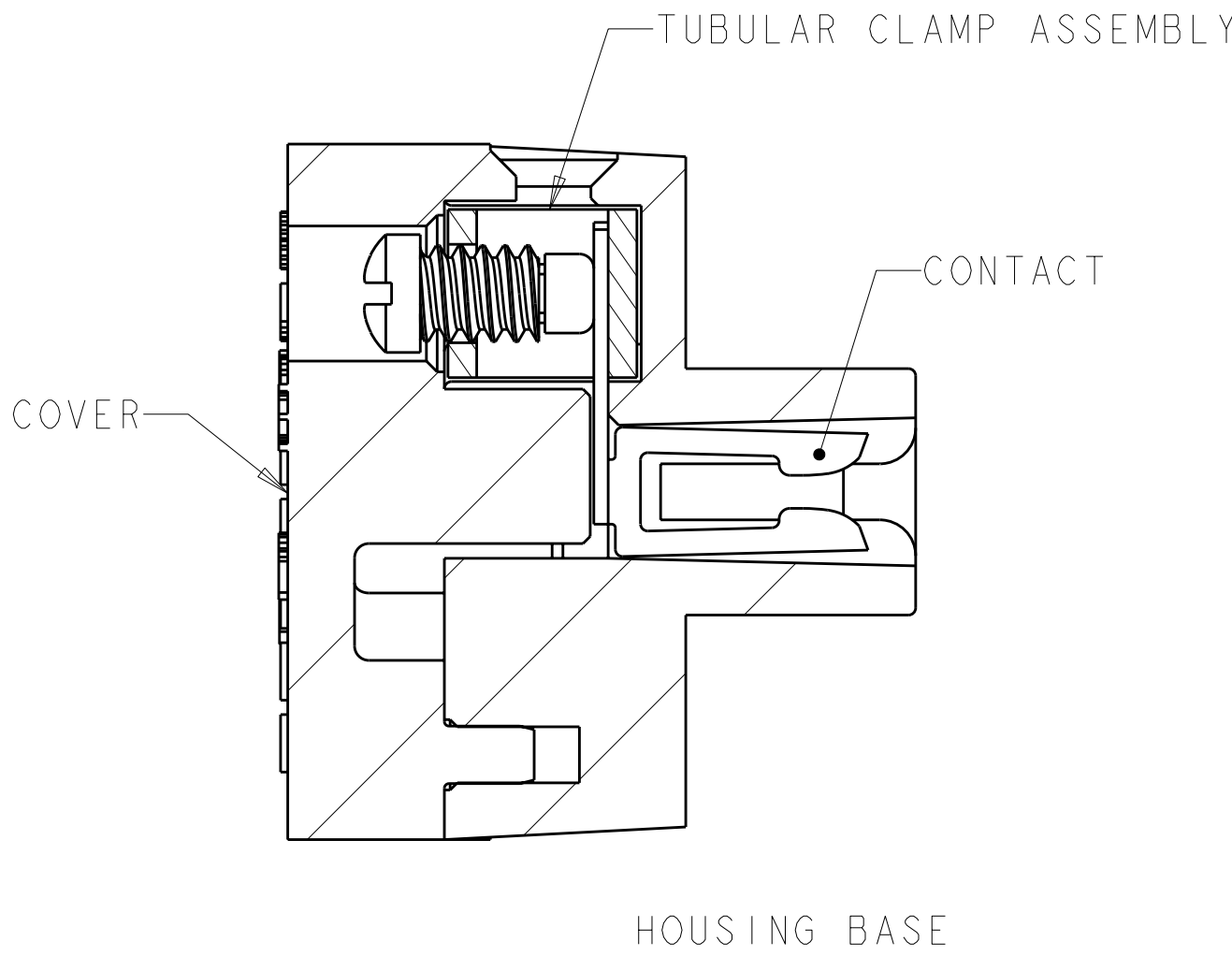
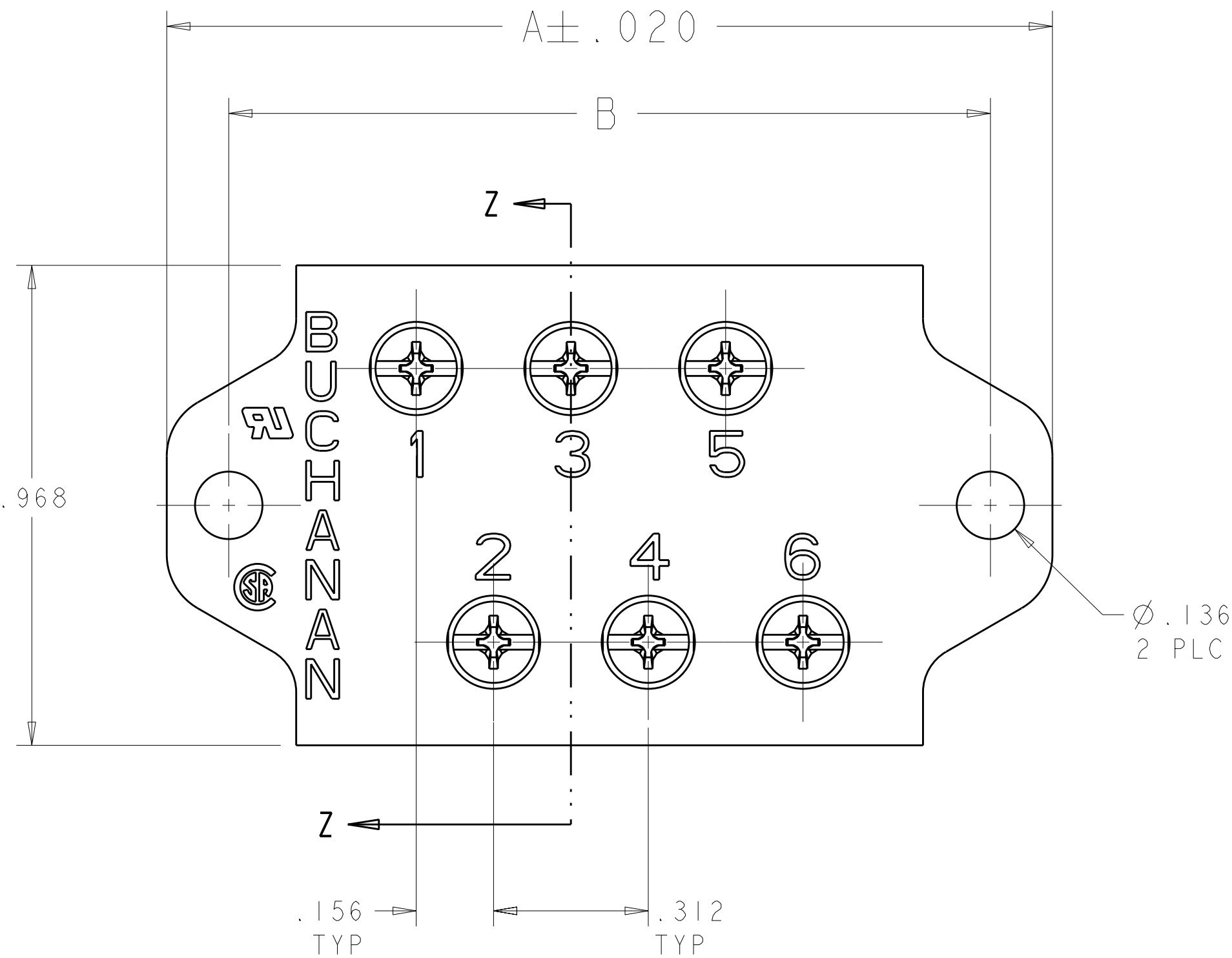
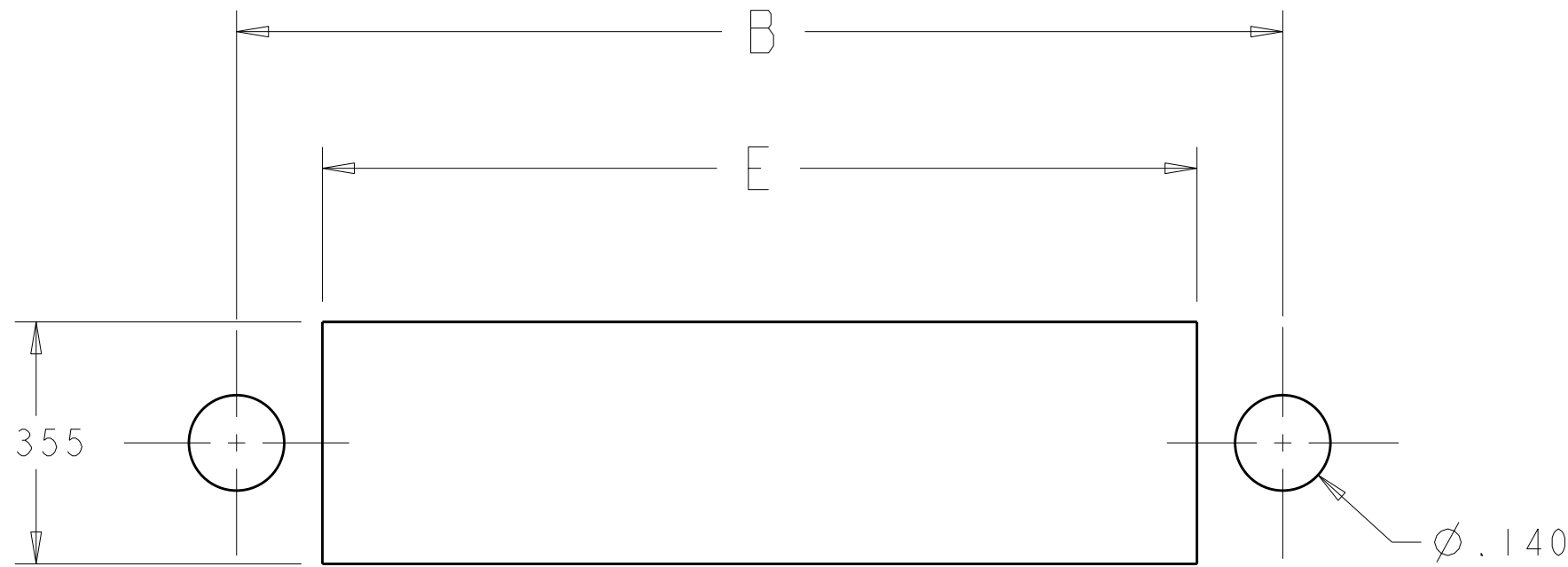
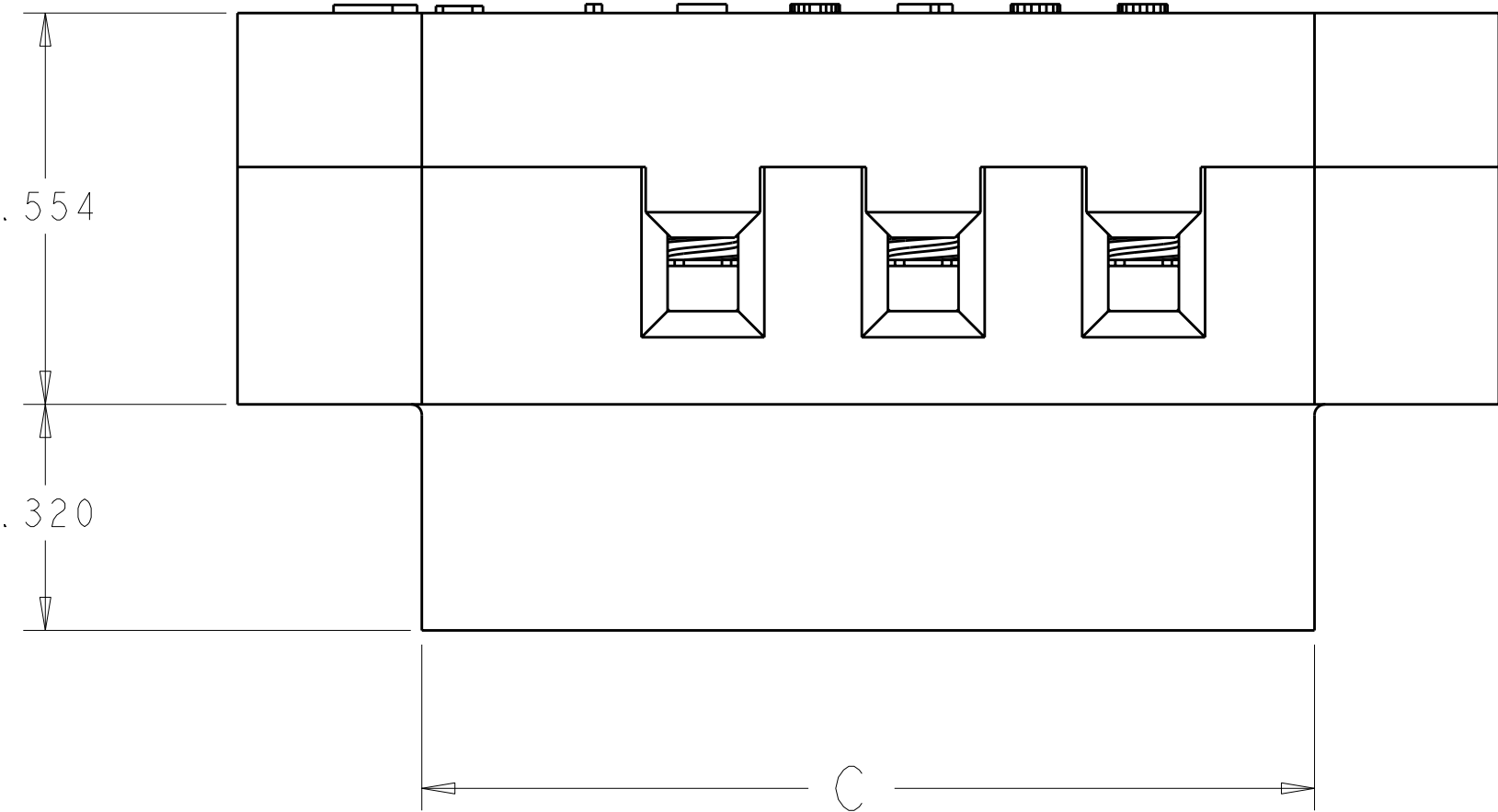


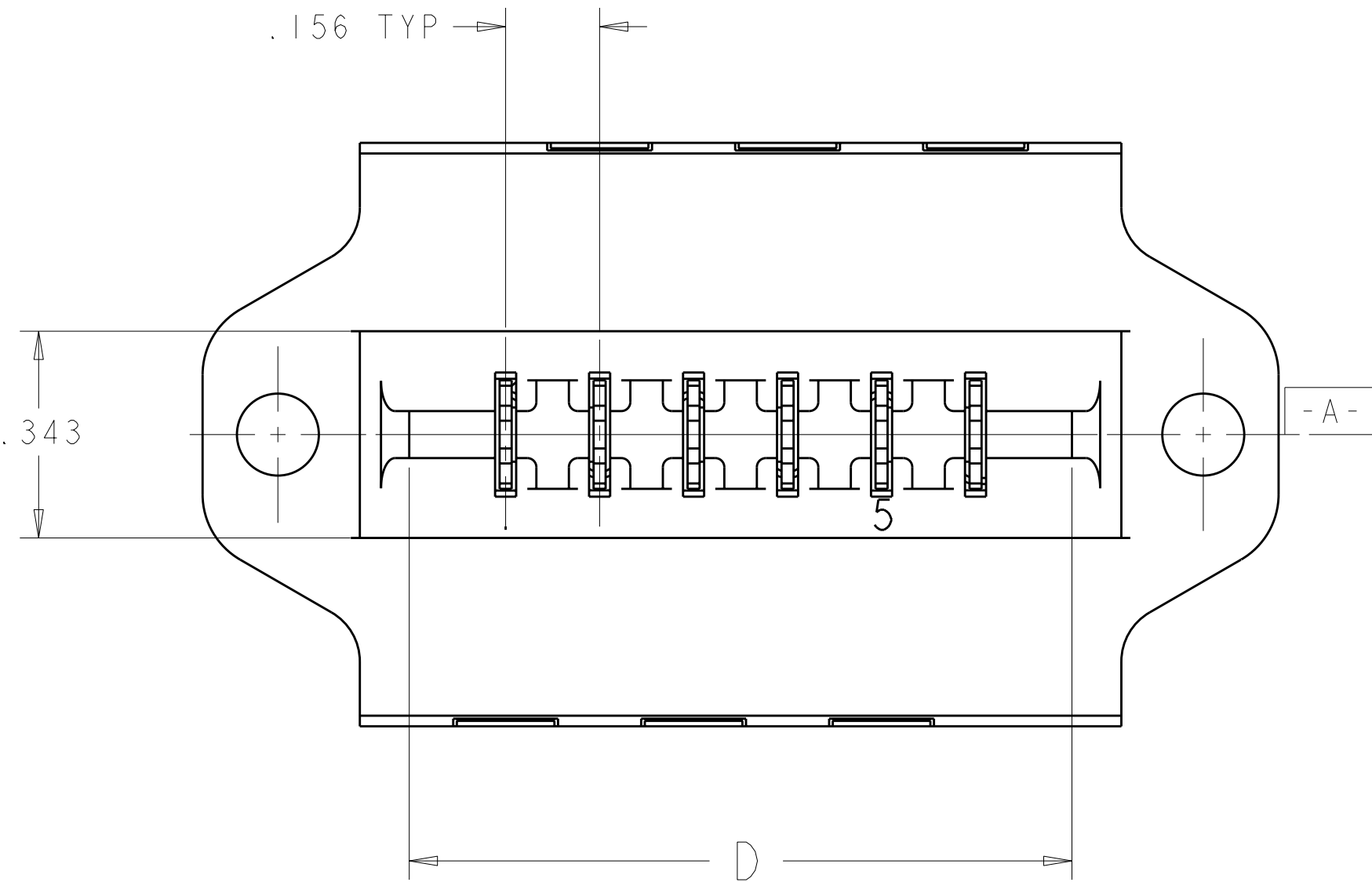
LOC		DIST		REVISIONS					
FT		0		P	LTR	DESCRIPTION	DATE	DWN	APVD
				P2		REVISED PER ECO-11-024007	01DEC2011	KH	MS



- ⚠ PHYSICAL PROPERTIES:
HOUSING BASE - POLYESTER, COLOR: BLACK.
COVER - POLYESTER, COLOR: BLACK
CONTACT - PHOSPHOR BRONZE, GOLD PLATED
TUBULAR CLAMP ASSY:
TUBULAR CONTACT - BRASS, UNPLATED
#6-32 SCREW - STEEL, ZINC PLATED CLEAR CHROMATE
CUP CLAMP - BRASS, UNPLATED
2. MECHANICAL PROPERTIES:
OPERATING TEMPERATURE RANGE: -65°C TO +140°C.
RECOMMENDED TIGHTENING TORQUE: 5-8 IN-LBS.
3. ELECTRICAL PROPERTIES:
MAXIMUM CURRENT: 10A
OPERATING VOLTAGE: 250V
WIRE RANGE: #12 STRANDED ONLY



RECOMMENDED PANEL CUTOUT



OBSOLETE

PCB2B43A	7.056	6.872	7.036	7.308	7.558	43	8-1437410-4
PCB2B36A	5.964	5.780	5.944	6.216	6.466	36	8-1437410-2
PCB2B30A	5.028	4.844	5.008	5.280	5.530	30	8-1437410-0
PCB2B28A	4.716	4.532	4.696	4.968	5.218	28	7-1437410-8
PCB2B24A	4.092	3.908	4.072	4.344	4.594	24	7-1437410-7
PCB2B22A	3.780	3.596	3.760	4.032	4.282	22	7-1437410-5
PCB2B18A	3.156	2.972	3.136	3.408	3.658	18	7-1437410-3
PCB2B16A	2.844	2.660	2.824	3.096	3.346	16	7-1437410-1
PCB2B15A	2.688	2.504	2.668	2.940	3.190	15	6-1437410-9
PCB2B12A	2.220	2.036	2.200	2.472	2.722	12	6-1437410-7
PCB2B10A	1.908	1.724	1.888	2.160	2.410	10	6-1437410-5
PCB2B09A	1.752	1.568	1.732	2.004	2.254	9	-
PCB2B08A	1.596	1.412	1.576	1.848	2.098	8	6-1437410-2
PCB2B06A	1.284	1.100	1.264	1.536	1.786	6	5-1437410-9
CATALOG NUMBER	E	D	C	B	A	NO OF POSN	PART NUMBER

THIS DRAWING IS A CONTROLLED DOCUMENT.

DIMENSIONS:
INCHES

MATERIAL

TOLERANCES UNLESS OTHERWISE SPECIFIED:

9 PLC ±.1
7 PLC ±0.1
5 PLC ±0.02
3 PLC ±0.005
4 PLC ±0.0005
ANGLES ±.

FINISH

DWN S. WELDON 08OCT2003
CHK S. YODER 08OCT2003
APVD S. YODER 08OCT2003

PRODUCT SPEC
APPLICATION SPEC

WEIGHT
CUSTOMER DRAWING

NAME
CONNECTION ASSEMBLY, CARD EDGE, PCB2BXXA

SIZE CAGE CODE DRAWING NO
A100779C=5-1437410-9

RESTRICTED TO
-

TE Connectivity

SCALE 4:1
SHEET 1 OF 1
REV P2

Mouser Electronics

Authorized Distributor

Click to View Pricing, Inventory, Delivery & Lifecycle Information:

[TE Connectivity:](#)

[PCB2B24A](#)