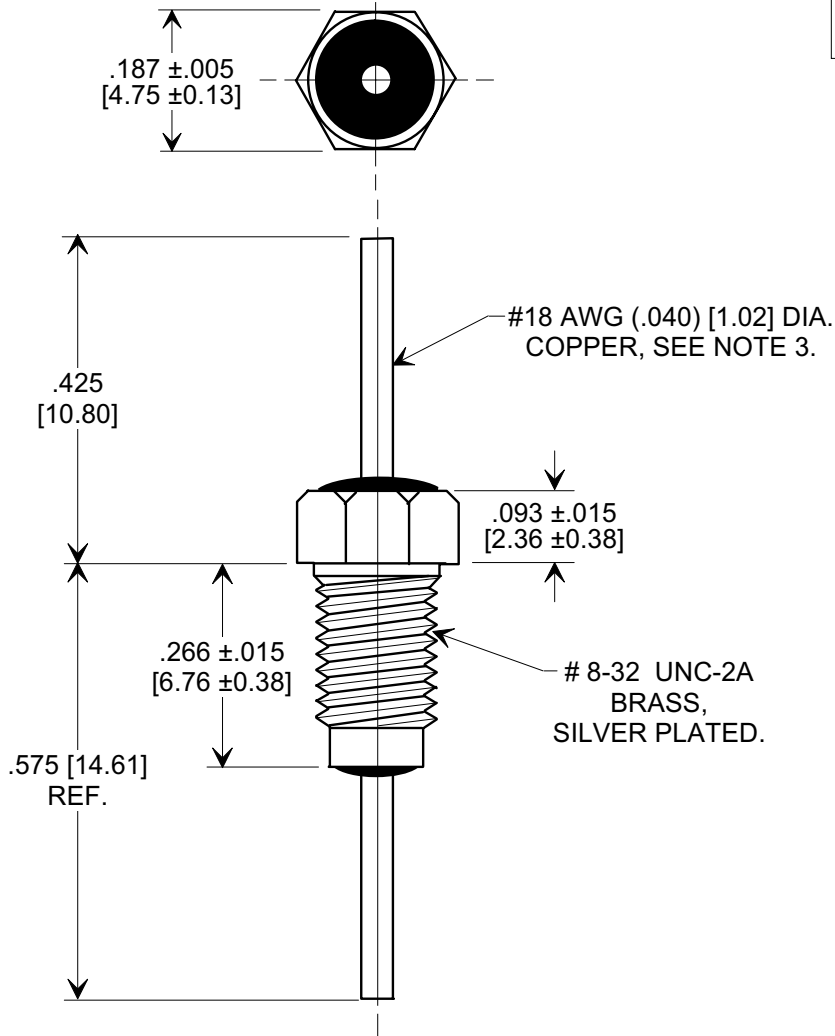
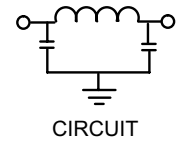
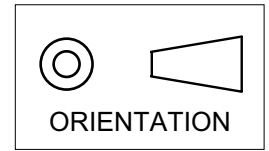


# MARKETING SALES DRAWING

DIMENSIONS IN INCHES - DO NOT SCALE THIS DRAWING  
 DIMENSIONS IN METRIC - [ ]

Electrical Testing  
 per Tusonix standard  
 test plans and Mil-Std-202  
 Test Methods.



**NOTES:**

- SUPPLIED WITH SILVER PLATED HEX NUT AND LOCKWASHER.
- TUSONIX STANDARD PART NUMBER: 4201-003.  
 TUSONIX RoHS COMPLIANT PART NUMBER: 4201-003 LF.  
 CUSTOMER MUST SPECIFY STANDARD OR RoHS PART NUMBER WHEN ORDERING.
- LEAD FINISH: STANDARD PART #: 60/40 SOLDER PLATED. RoHS PART #: SILVER PLATED.
- PART MARKING: TRADEMARK AND VARIATION NUMBER ON HEX FLATS.  
 STANDARD PART: BLACK INK. RoHS PART: GREEN INK.

MIN. CAP. (pF)	WORKING VOLTAGE (WVdc)		CURRENT (Idc)	I.R.	DWV	MINIMUM NO LOAD INSERTION LOSS (dB) AT 25°C PER MIL-STD -220			
	85°C	125 °C				10 MHz	100 MHz	1 GHz	10 GHz
2000	200	100	15 A	10 G	400 VDC 2 SEC.	5	38	63	70

X-2015 Rev-0 <b>REVISION RECORD</b>	0	Original Release C.O.	1760 RDN TO COMP FMT & ADDED METRIC. 01-23-02 20020123-2-01 ADDED NOTES. S.M. 07-27-05 20050726-2-13	1 RDN TO COMP FMT & ADDED METRIC. 01-23-02 20020123-2-01 ADDED NOTES. S.M. 07-27-05 20050726-2-13	2 RDN TO COMP FMT & ADDED METRIC. 01-23-02 20020123-2-01 ADDED NOTES. S.M. 07-27-05 20050726-2-13	3 RDN TO COMP FMT & ADDED METRIC. 01-23-02 20020123-2-01 ADDED NOTES. S.M. 07-27-05 20050726-2-13	--TOLERANCES-- Unless Otherwise Specified		Title <b>BUSHING STYLE EMI FILTER</b>	
	DECIMAL ± .031 [0.79]						Drawn S.M. 01-23-02		Scale 4 X	
	ANGLES ±						Approved T.C. 01-23-02		Approved T.C. 01-23-02	
	<b>TUSONIX</b> TUCSON, ARIZONA						<b>A</b>		<b>4201-003</b>	

# Mouser Electronics

Authorized Distributor

Click to View Pricing, Inventory, Delivery & Lifecycle Information:

[Tusonix / CTS:](#)

[4201-003LF](#)