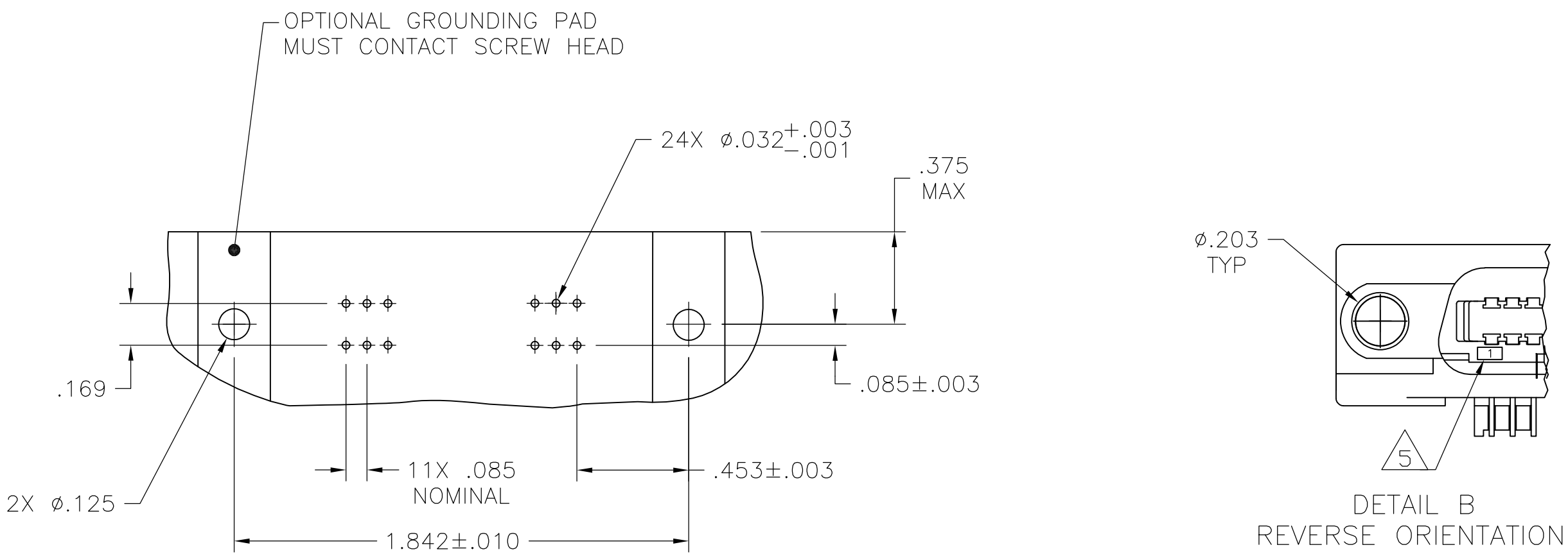
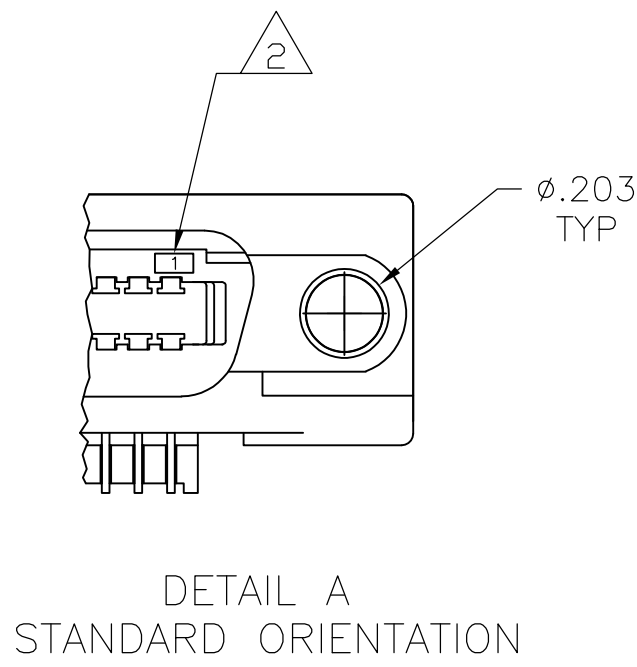


D

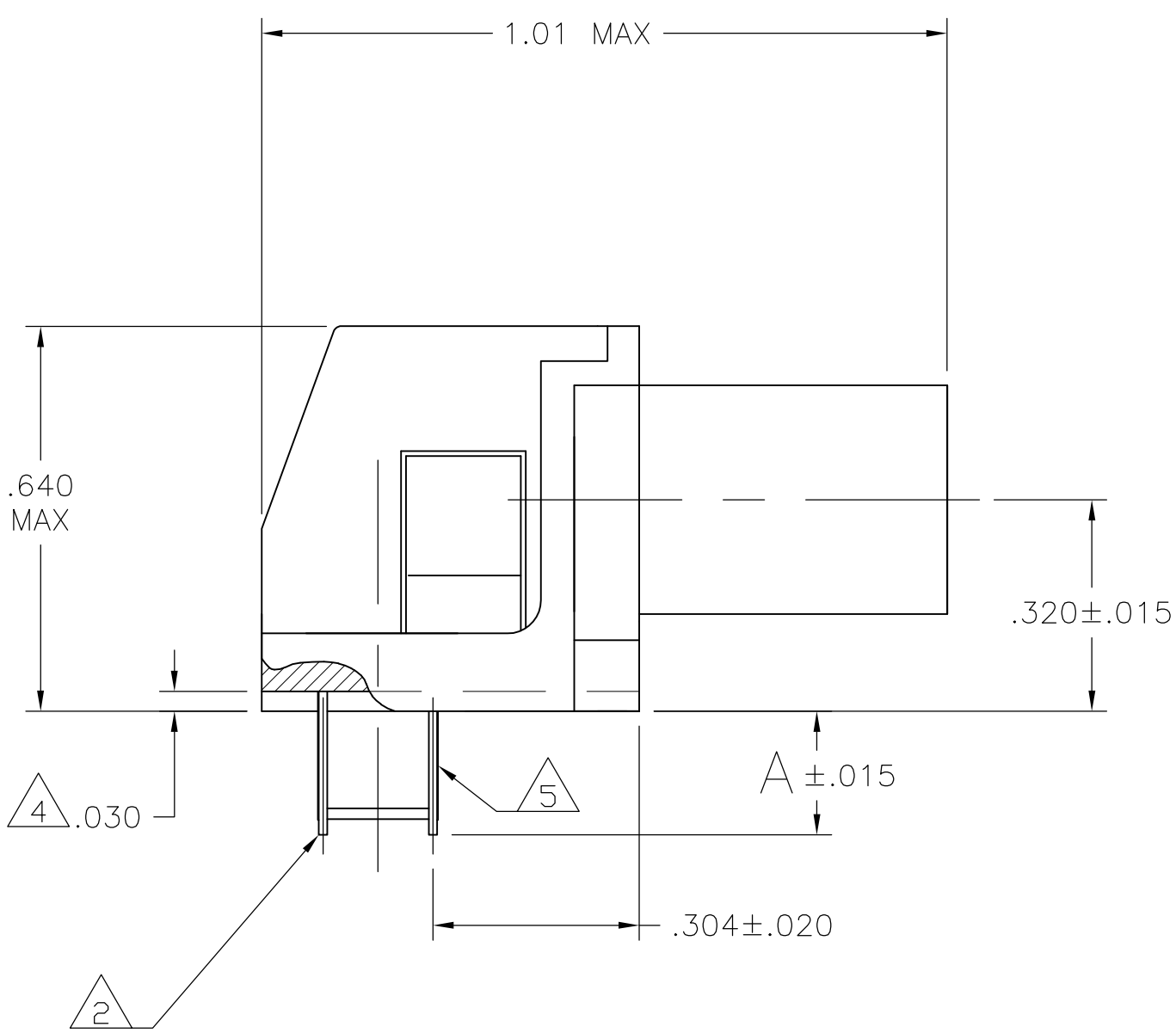
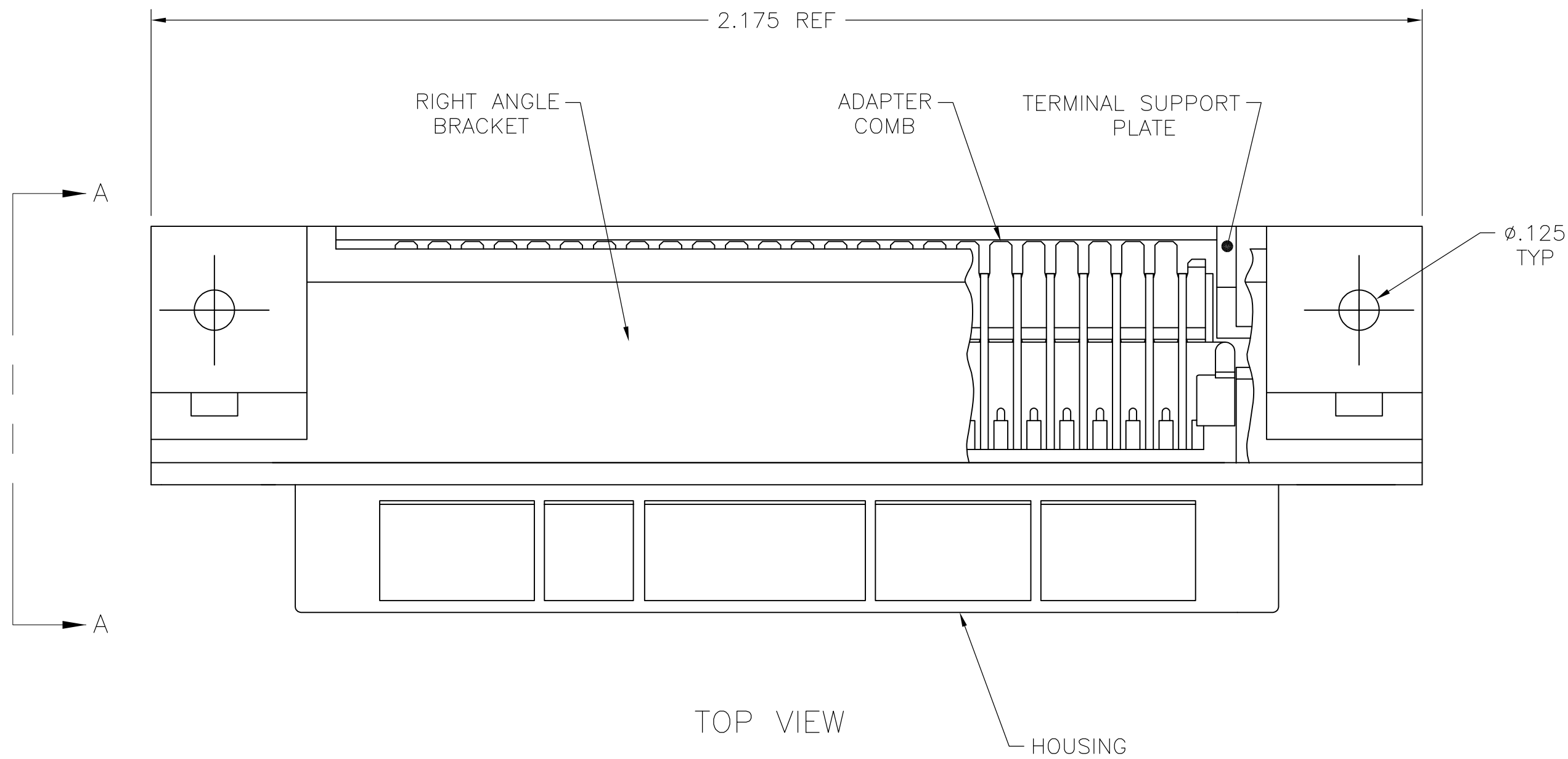


SUGGESTED PRINTED CIRCUIT BOARD MOUNTING DIMENSIONS

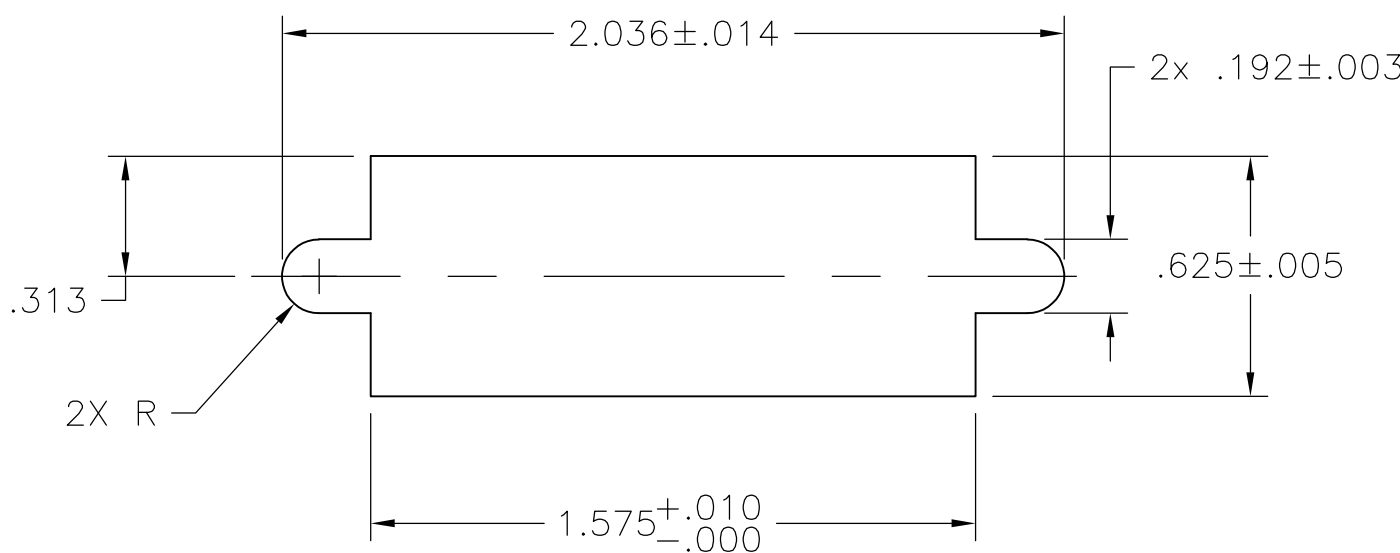


- 1 MATERIAL:  
HOUSING, RIGHT ANGLE BRACKET, ADAPTER COMB & SUPPORT PLATE – THERMOPLASTIC, BLACK.  
TERMINALS – HIGH STRENGTH COPPER ALLOY PLATED WITH EITHER .000030 MIN GOLD PLATE OR GOLD FLASH OVER PALLADIUM NICKEL PLATE, .000030 MIN TOTAL ON MATING SURFACE. .000120 MIN TIN PLATE ON TAILS. ALL OVER .000050 MIN NICKEL UNDERPLATE OVER ENTIRE TERMINAL.
- 2 TERMINAL 1 IS LOCATED IN THIS ROW FOR STANDARD ORIENTATION, SEE DETAIL A.
- 3 PANEL THICKNESS RANGE: .125 MAX.
- 4 SUPPORT PLATE CLEARANCE FOR TERMINAL STRAIN RELIEF AND FLUX REMOVAL.
- 5 TERMINAL 1 IS LOCATED IN THIS ROW FOR REVERSE ORIENTATION, SEE DETAIL B.

C



B



|      |              |             |
|------|--------------|-------------|
| .092 | SEE DETAIL B | 5553121-3   |
| .187 | SEE DETAIL B | 5553121-2   |
|      | SEE DETAIL A | 5553121-1   |
| A    | DESCRIPTION  | PART NUMBER |

|   |  |                                |                  |           |
|---|--|--------------------------------|------------------|-----------|
| THIS DRAWING IS A CONTROLLED DOCUMENT.<br>DIMENSIONING AND TOLERANCING PER ASME Y14.5M-2009 |  | DWN<br>B. MCMASTER<br>18AUG05  | TE Connectivity  |           |
| DIMENSIONS:<br>INCHES   |  | CHK<br>W. MILLHIMES<br>18AUG05 | NAME             |           |
|   |  | APVD<br>M. WALMISEY<br>18AUG05 | PRODUCT SPEC     |           |
|   |  |                                | APPLICATION SPEC |           |
| MATERIAL  |  | FINISH                         | SIZE             | CAGE CODE |
| 1   |  | 1                              | A1               | 00779     |
| CUSTOMER DRAWING  |  | SCALE                          | 2:1              | SHEET     |
|   |  |                                |                  | 1 OF 1    |
|   |  |                                |                  | REV       |
|   |  |                                |                  | C         |

# Mouser Electronics

Authorized Distributor

Click to View Pricing, Inventory, Delivery & Lifecycle Information:

[TE Connectivity:](#)

[5553121-2](#)