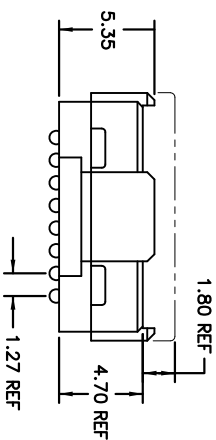
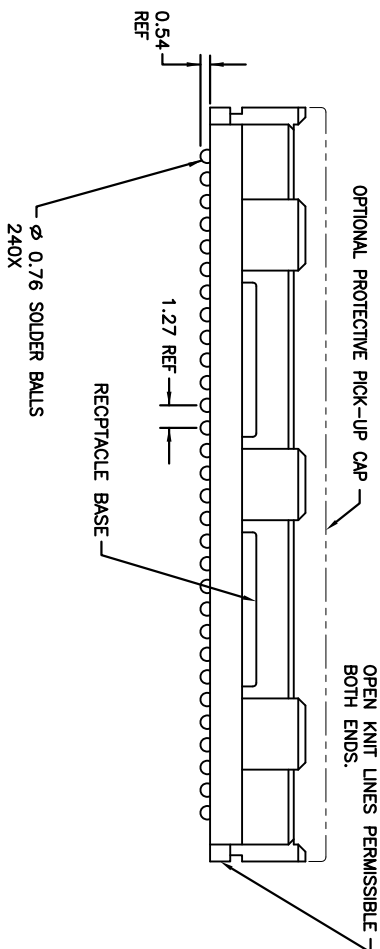
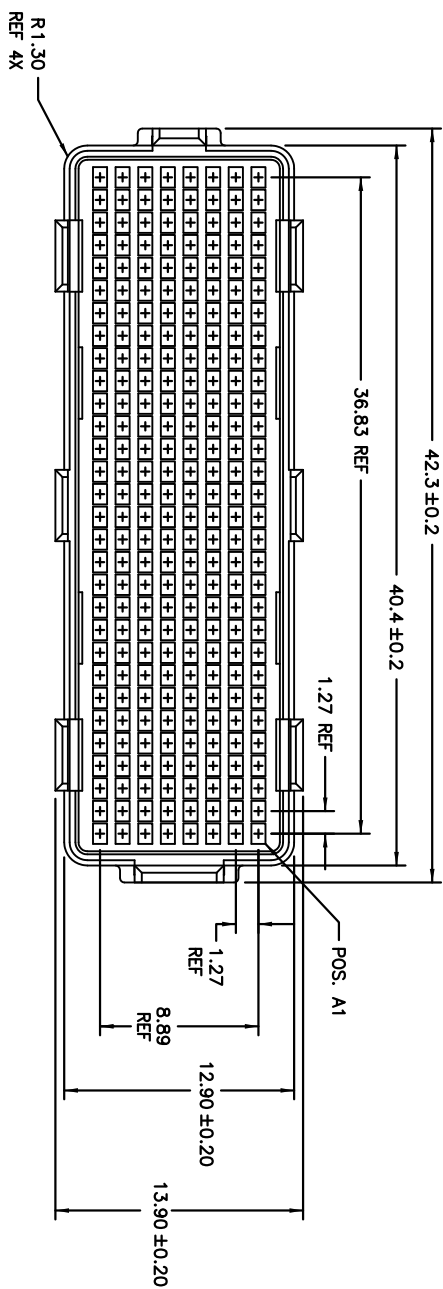
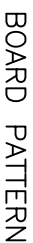


PRODUCT NUMBER  
SEE TABLE-SHEET 2



mat'l. code		surface		tolerance		projection		product family	
lfr	ecm no.	dr	date	ASME Y14.5	ASME Y14.5	ASME Y14.5	ASME Y14.5	MEG-ARRAY	title
H	Y-14360-	DCH	2015-11	angles	mm	mm	mm	6mm RECPT. ASSY.	8x30 = 240 POS.
-	-	-	-	XXX-B	XXX-B	XXX-B	XXX-B	55755	sheet 1 of 2
C	V04-0940	VS	2004-10-15	0" ± 2"	XXX-0051	Scale	3:1	CUSTOMER Drawing	A4
D	V06-0560	LP	2006-06-22	dr	D.WALUGHEN	1.31.02			
E	V12-0033	SM	2012-09-29	ENG	J. KONTOS	1.31.02			
F	V12-0039	DCH	2012-11-14	CH	J. KONTOS	1.31.02			
G	V12-0052	DCH	2012-12-06	CH	J. KONTOS	1.31.02			
Sheet	revision	H	H						
Index	Sheet	1	2						



5. THIS PRODUCT MEETS EUROPEAN UNION DIRECTIVES AND OTHER COUNTRY REGULATIONS AS DESCRIBED IN GS-22-0080 PRODUCT MEETING THIS DIRECTIVE IS IDENTIFIED IN THE LOT CODE NUMBER MARKED ON EACH PART BY HAVING AN "X" IN THE SEVENTH CHARACTER POSITION

8. A  SYMBOL WILL BE NEXT TO ANY DIMENSION, NEW VIEW OR NOTE WHICH HAS BEEN MODIFIED WITH THE CURRENT DRAWING REVISION.

4

# Mouser Electronics

Authorized Distributor

Click to View Pricing, Inventory, Delivery & Lifecycle Information:

[FCI / Amphenol:](#)

[55755-201](#) [55755-001LF](#) [55755-201LF](#) [55755-101LF](#) [55755-101](#) [55755-001](#) [55755-091LF](#) [55755-291](#) [55755-091](#)  
[55755-191LF](#) [55755-291LF](#) [55755-191](#)