

4

3

2

1

THIS DRAWING IS UNPUBLISHED.

RELEASED FOR PUBLICATION

© COPYRIGHT

ALL RIGHTS RESERVED.

LOC

DIST


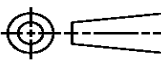
REVISIONS

P	LTR	DESCRIPTION	DATE	DWN	APVD
	C1	ECR-14-002424	21FEB2014	GK	HMR

REPLACED BY OCEAN STYLE APPLICATOR PART
NUMBER 2151133-1

FOR REPLACEMENT PARTS FOR APPLICATOR 1426051
REFER TO ADDITIONAL PAGE(S). SPARE PARTS KIT (IF LISTED)
WILL REMAIN AVAILABLE.

THE REPLACEMENT OCEAN STYLE APPLICATOR HAS THE
SAME TERMINATOR/PRESS INTERFACE AS APPLICATOR
1426051

THIS DRAWING IS A CONTROLLED DOCUMENT.		DWN GOPALAKRISHNA HV		 TE Connectivity			
DIMENSIONS:		CHK RAGHAVENDRA					
		APVD RAGHAVENDRA		NAME SIDE FEED HD-I APPLICATOR			
		PRODUCT SPEC					
		APPLICATION SPEC					
MATERIAL		WEIGHT		SIZE A3	CAGE CODE	DRAWING NO C- 1426051	RESTRICTED TO
FINISH		CUSTOMER DRAWING		SCALE		SHEET 1 OF 2	REV C1

THIS DRAWING IS A CONTROLLED DOCUMENT

LAYOUT
L1426051

SET UP GAGE
458637-3

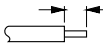




2000

RELEASED FOR PUBLICATION
BY AMP INCORPORATED. ALL RIGHTS RESERVED.

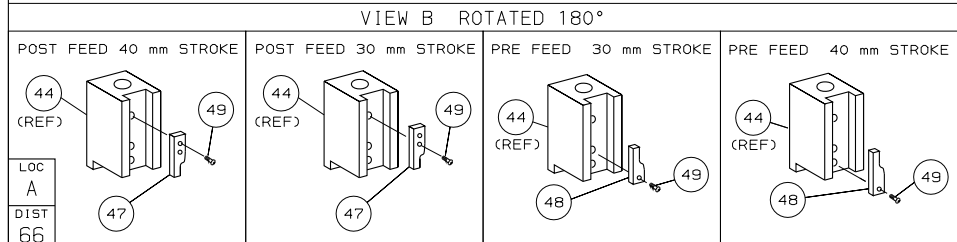
THIS DRAWING IS UNPUBLISHED.
© COPYRIGHT 2000

DRAWING MADE IN THIRD ANGLE PROJECTION

PART NUMBER	REV	FIRST USED	TERMINATOR	FEED TYPE	DESCRIPTION
1426051-1	C	122500-1	LEADMAKER	MECH POST FEED	CUTS CARRIER
1426051-2	C	565435-5	BENCH K & G	MECH PRE FEED	CUTS CARRIER
1426051-6	C	122500-1	LEADMAKER	MECH POST FEED	CONTINUOUS CARRIER
7-1426051-1	C	122500-1	LEADMAKER	MECH POST FEED	-1 AND SPARE PARTS
7-1426051-2	C	565435-5	BENCH K & G	MECH PRE FEED	-2 AND SPARE PARTS
7-1426051-6	C	122500-1	LEADMAKER	MECH POST FEED	-6 AND SPARE PARTS
7-1426051-7	A	-	-	-	SPARE PARTS KIT

CRIMP DATA (AMP TERMINAL)				
TERMINAL NAME: STANDARD TIMER CONTACT.				
CRIMP	SIZE	TYPE	RANGE	
WIRE	2.03 [.080 IN]	F	0.50mm ² - 1.00mm ²	
INSUL	2.79 [.110 IN]	0V	1.40-2.30 [.055-.091 IN]	
WIRE STRIP LENGTH 3.90-4.50 [.154-.177 IN]			APPL INSTRUCTION 408-8322	
TERMINAL 114-18079 APPL SPEC 114-18080		A B		FEED 20.32 [.800 IN]
TERMINALS APPLIED				
TERMINALS	SPECS.	-	-	-
927845	A	-	-	-
927847	B	-	-	-
928753	B	-	-	-
928820	B	-	-	-
964201	B	-	-	-
-	-	-	-	-
-	-	-	-	-
WIRE SIZE mm ² AWG		CRIMP HEIGHT		PIN PN & LENGTH [IN]
				
1.00mm ²		1.36 ±0.05 [.054 ±.002 IN]		1-354779-0 [.3040]
0.85mm ²		1.31 ±0.05 [.052 ±.002 IN]		1-354779-5 [.3065]
18 AWG		1.29 ±0.05 [.051 ±.002 IN]		1-354779-7 [.3075]
0.75mm ²		1.27 ±0.05 [.050 ±.002 IN]		1-354779-9 [.3085]
0.70mm ²		1.25 ±0.05 [.049 ±.002 IN]		2-354779-1 [.3095]
20 AWG		1.19 ±0.05 [.047 ±.002 IN]		2-354779-5 [.3115]
0.50mm ²		1.18 ±0.05 [.046 ±.002 IN]		2-354779-9 [.3135]
-		-		-
-		-		-
-		-		-
-		-		-
-		-		-
-		-		-
-		-		-
-		-		-

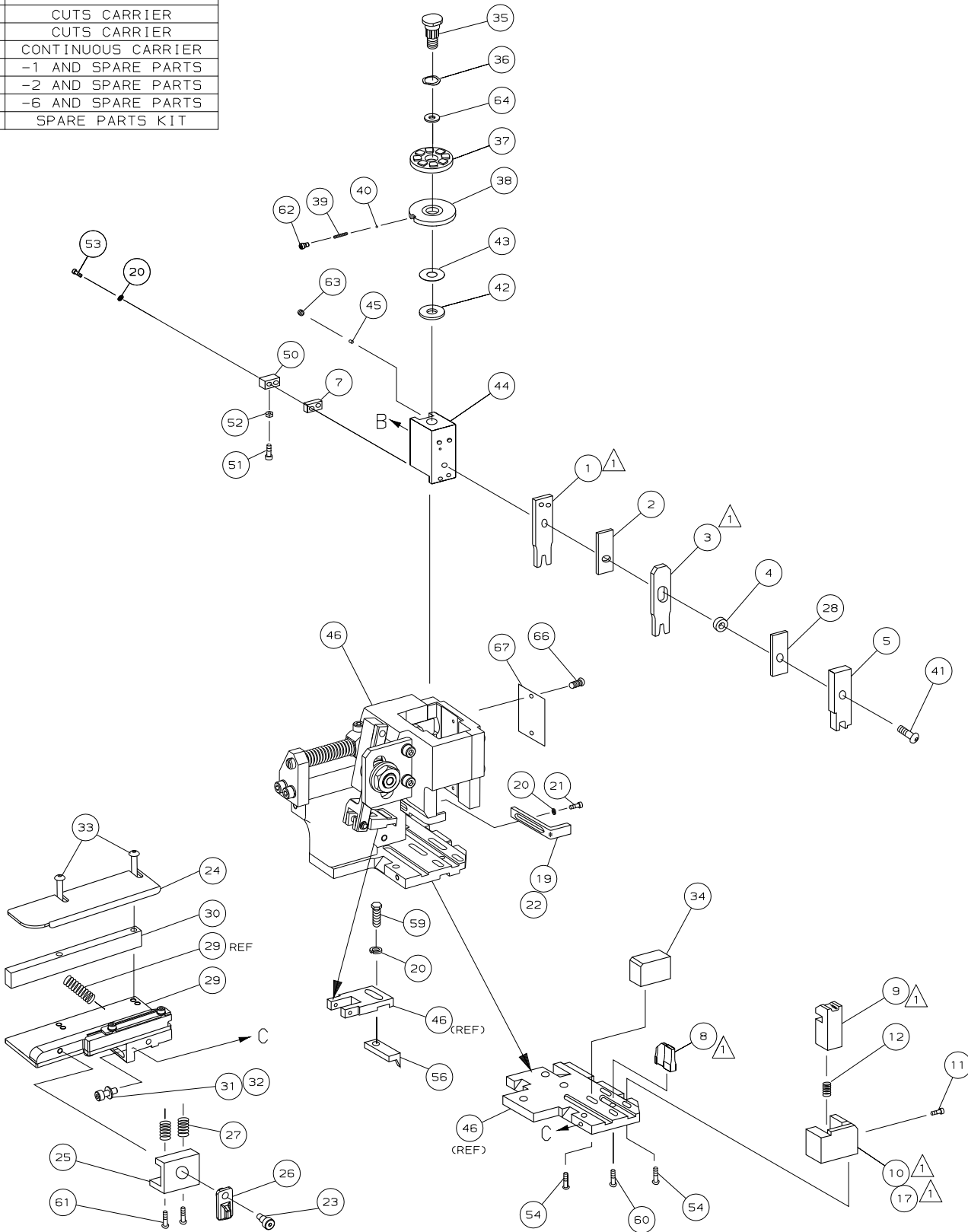
1. RECOMMENDED SPARE PARTS.
2. GREASE RAM, CAM, CAM FOLLOWER AND FEED ROD LIGHTLY.
3. LUBRICATE DAILY PER THE APPLICATOR INSTRUCTION SHEET SUPPLIED WITH THE APPLICATOR.



AMP 1756 REV 3-92 24-AUG-06 16:09:46 b8420 7 6 5 4 3

1426051 1426051

/nd/mbaum/middleton



-	1	1	1	1	1	1	1426051	PRINT, APPLICATOR LOG SHEET	72
-	1	1	1	1	1	1	1338705-1	DOCUMENTATION PACKAGE	71
									70
									69
									68
-	1	1	1	1	1	1	461264-1	PLATE, IDENTIFICATION	67
-	2	2	2	2	2	2	21017-2	SCR, DRIVE (#2x.19) ID PLATE	66
									65
-	1	1	1	1	1	1	986950-1	WASHER, FLAT PRECISION	64
-	1	1	1	1	1	1	3-18031-0	SCR, SKT SET (M6X6) RAM	63
-	1	1	1	1	1	1	18023-9	SCR, SHC (M4X6) INS DISC	62
-	2	2	2	2	2	2	2-18032-5	SCR, SOC SET (M5X20) DRAG	61
-	1	1	1	1	1	1	18024-7	SCR, BHC (M4X10) ANVIL	60
-	1	1	1	1	1	1	5-18022-2	SCR, HEX (M4X8) FEED FINGER	59
									58
									57
-	1	1	1	1	1	1	1338685-1	PAWL, FEED	56
									55
-	4	4	4	4	4	4	18024-8	SCR, SHC (M4X12) SHEAR HOLDER	54
-	2	2	2	2	2	2	1-18023-3	SCR, SHC (M4X16) TERM HLD DWN	53
-	1	1	1	1	1	1	18030-1	NUT, HEX (M3) HOLD DOWN	52
-	1	1	1	1	1	1	811242-5	BUMPER, HOLDDOWN	51
-	1	1	1	1	1	1	690753-2	SPACER, TONKER	50
-	1	1	1	1	1	1	18024-3	SCR, BHC (M3X10) CAM	49
-	-	1	-	-	1	-	1338675-1	CAM, PRE FEED 30 & 40 mm ST	48
-	1	-	1	1	-	1	1338676-1	CAM, POST FEED 30 & 40 mm ST	47
-	1	1	1	1	1	1	1320999-3	APPLICATOR BASIC SUBASSY	46
-	1	1	1	1	1	1	690191-1	PLUG, NYLON	45
-	1	1	1	1	1	1	1338660-1	RAM	44
-	1	1	1	1	1	1	690125-1	WASHER, LAMINATED	43
-	1	1	1	1	1	1	690124-1	WASHER, RAM	42
-	1	1	1	1	1	1	2-18024-6	SCR, BHC (M8X25) RAM	41
-	1	1	1	1	1	1	23241-1	BALL, STEEL	40
-	1	1	1	1	1	1	2-22278-7	SPRING, COMPRESSION	39
-	1	1	1	1	1	1	1320922-1	DISC, INSULATION	38
-	1	1	1	1	1	1	354777-1	WIRE DISC, PLASTIC	37
-	1	1	1	1	1	1	22480-5	WASHER, SPRING	36
-	1	1	1	1	1	1	690212-1	POST, RAM	35
-	1	1	1	1	1	1	1320934-3	SUPPORT, TERMINAL	34
-	2	2	2	2	2	2	1-18024-0	SCR, BHC (M4X20) STRIP GUIDE	33
-	1	1	1	1	1	1	18027-2	WASHER, FLAT (M4)	32
-	1	1	1	1	1	1	1-18023-2	SCR, SKT CAP (M4X12) MOUNT BLOCK	31
-	1	1	1	1	1	1	1320908-3	SPACER, STRIP GUIDE	30
-	1	1	1	1	1	1	1633073-1	STRIP GUIDE PLATE ASSY	29
-	1	1	1	1	1	1	1-455888-6	SPACER, FRONT SHEAR DEP	28
-	2	2	2	2	2	2	1-22284-0	SPRING, DRAG	27
-	1	1	1	1	1	1	356835-1	LEVER, DRAG RELEASE	26
-	1	1	1	1	1	1	240792-1	DRAG, TERMINAL	25
-	1	1	1	1	1	1	1320928-2	PLATE, STRIP GUIDE	24
-	1	1	1	1	1	1	980371-4	SCR, SHC SHLD	23
-	1	-	1	1	-	1	690472-2	STRIPPER	22
-	1	1	1	1	1	1	1-18023-1	SCR, SHC (M4X10) STRIPPER	21
-	4	4	4	4	4	4	18025-2	WASHER, LOCK (M4) STRIPPER	20
-	-	1	-	-	1	-	690472-1	STRIPPER	19
-	1	-	-	1	-	-	1338684-1	HOLDER, SHEAR, FRONT (NO-CUT)	17
									16
									15
									14
									13
-	1	1	1	1	1	1	3-22280-3	SPRING, SHEAR	12
-	1	1	1	1	1	1	356885-4	STOP, SHEAR	11
-	-	1	1	-	1	1	1320921-1	HOLDER, SHEAR, FRONT (CUT)	10
-	1	1	1	1	1	1	454276-1	SHEAR, FLOAT (FRONT)	9
1	2	2	2	1	1	1	1-1333204-0	ANVIL	8
-	1	1	1	1	1	1	240641-7	SPACER, DEPRESSOR (REAR)	7
									6
-	1	1	1	1	1	1	1-455889-4	DEPRESSOR, SHEAR (FRONT)	5
-	1	1	1	1	1	1	1-238011-0	SPACER, BLOCK CRIMPER	4
1	2	2	2	1	1	1	1-854830-5	CRIMPER, INSULATION	3
-	1	1	1	1	1	1	455888-5	SPACER, CRIMPER	2
1	2	2	2	1	1	1	1-456405-5	CRIMPER, WIRE	1
-77	-76	-72	-71	-6	-2	-1	PART NO	DESCRIPTION	ITEM NO
							REVISION OF EACH ASSY NO (WHEN BLANK, USE DWG REVISION)		
							QTY REQD PER ASSY		
							PARTS LIST		
							MATL	HT TR	FIN
							DR	23JUN00	APP 23JUN00
							L. LOFTHOUSE	F. BACKHURST	
							CHK	REL	
							AMP Incorporated		
							Harrisburg, PA 17105-3608		
							NAME	SIDE FEED HD-I APPLICATOR	
							SCALE	DWG NO	1426051
							SHEET	1 of 1	REV C
							CUSTOMER AND ASSEMBLY DRAWING		
							RESTRICTED TO		

Mouser Electronics

Authorized Distributor

Click to View Pricing, Inventory, Delivery & Lifecycle Information:

[TE Connectivity:](#)

[1426051-6](#)