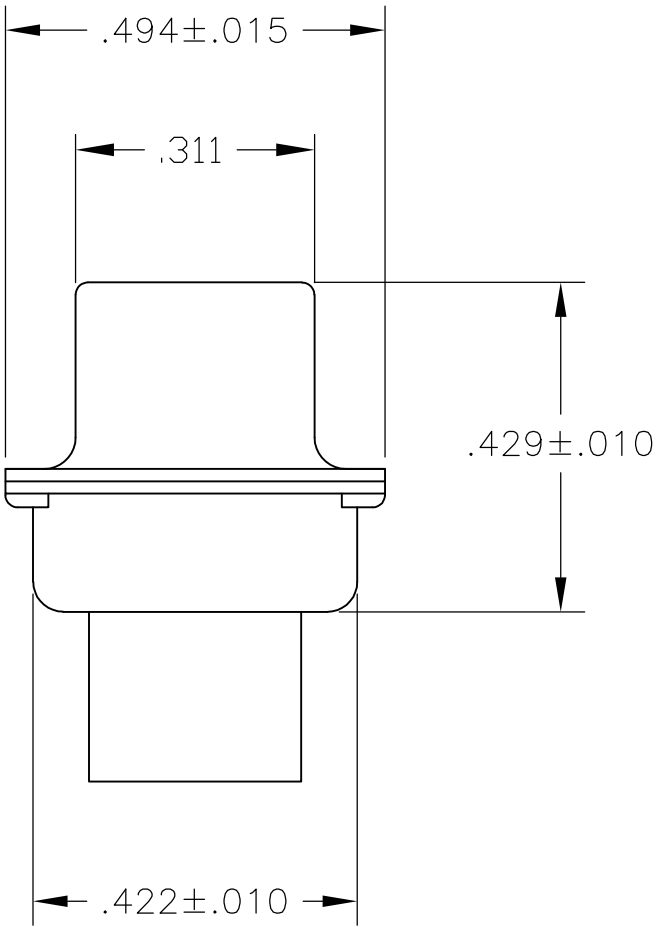
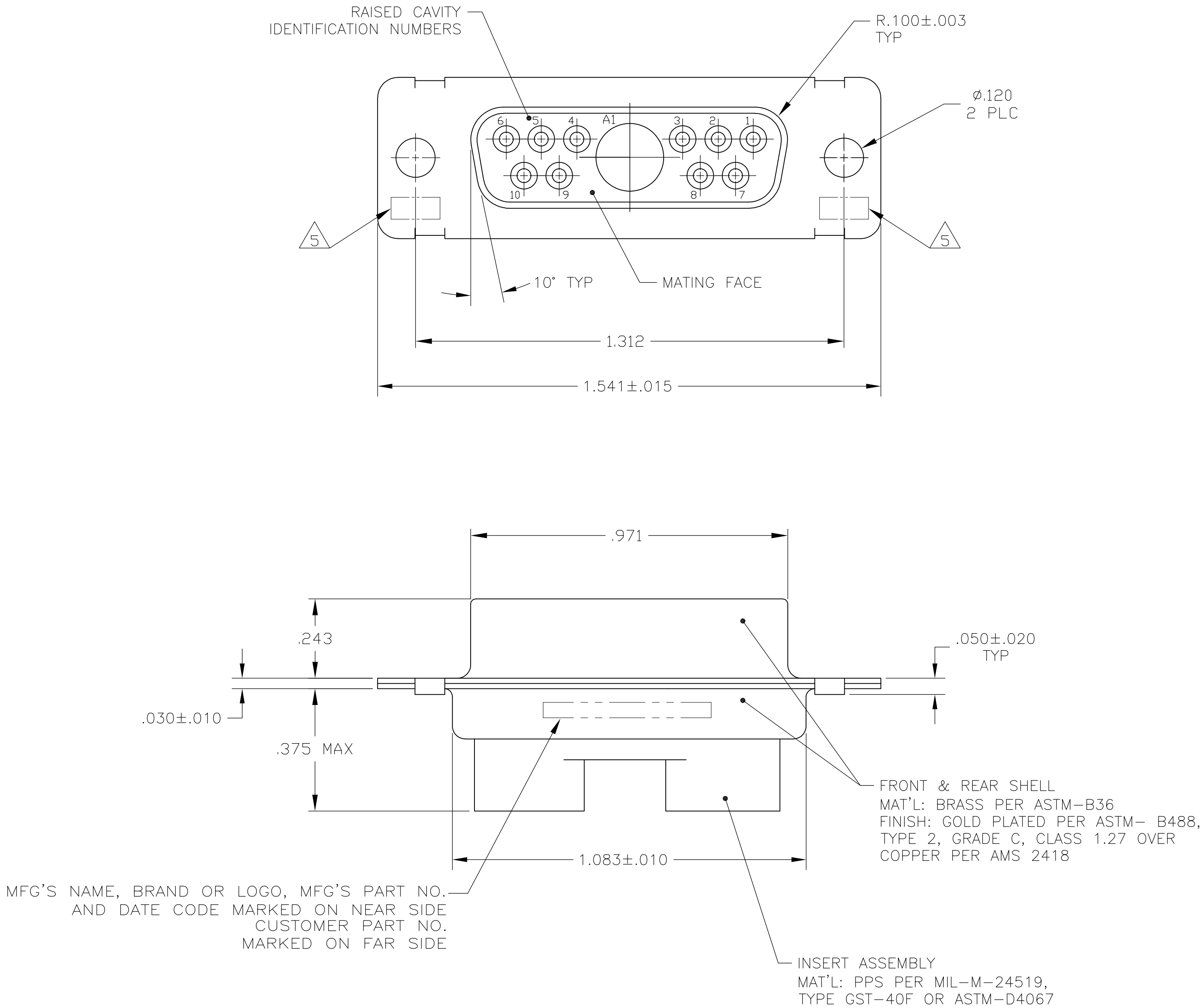


LOC	DIST	REVISIONS				
		REV	PER	ECO	DATE	APVD
DF	DO	C	REV	PER	ECO 08-030008	21JAN2009

1. THIS RECEPTACLE WILL MATE WITH ANY 11C1, SIZE 2 PLUG IN AMPLIMITE SERIES.
2. MAXIMUM WIRE INSULATION TO BE USED WITH THIS PLUG IS Ø.072.
3. THIS CONNECTOR ACCEPTS (1) POWER 8, OR COAX PIN CONTACT IN POSITIONS A1, PURCHASED SEPARATELY.
4. THIS CONNECTOR ACCEPTS SIZE 20 SOCKET CONTACTS IN POSITIONS 1 THRU 10. PURCHASED SEPARATELY.

5 UL/CSA DESIGNATION STAMPED IN THIS AREA, OPTIONAL.



B010950-0014	1883533-1
CUSTOMER PART NO.	PART NO.

THIS DRAWING IS A CONTROLLED DOCUMENT.		DWN C.C.THOMAS CHK D.MILLER APVD D.MILLER	10-4-06 10-4-06 10-4-06	Tyco Electronics Corporation Harrisburg, Pa 17105-3608
DIMENSIONS: INCHES	TOLERANCES UNLESS OTHERWISE SPECIFIED:	PRODUCT SPEC	NAME	
	0 PLC ± - 1 PLC ± - 2 PLC ± - 3 PLC ± .005 4 PLC ± - ANGLES ± - 0°30'	APPLICATION SPEC	SIZE	
MATERIAL SEE CALLOUTS	FINISH SEE CALLOUTS	WEIGHT -	100779	
CUSTOMER DRAWING		SCALE 4:1	SHEET 1 OF 1	REV C

Mouser Electronics

Authorized Distributor

Click to View Pricing, Inventory, Delivery & Lifecycle Information:

[TE Connectivity:](#)

[1883533-1](#)