

CRTouch

CRTouch Data Sheet

Capacitive and Resistive Touch Sensing Application Specific IC.



The CRTouch is a Ready Play solution device designed to serve as a four wire and five wire resistive touch driver and a capacitive touch sensing device in a single 32-pin QFN package. It provides all the signal interfacing and processing to calculate X and Y coordinates as well as to detect and process two touch gestures for human-machine interface applications. Its key features are:

Features

- X and Y coordinates calculated from a resistive touch screen with built-in filter to improve stability
- Slide gesture detection for single touch.
- Two touch gesture detection for resistive four wire screens
 - Zoom In and Zoom Out
 - Rotate with clockwise and counter clockwise indication.
- Four capacitive keys in different configurations
 - Rotary
 - Slider
 - Keypad
- UART communication and I2C communication available
- Baud-rate auto detection pin to enable automatic synchronization with any UART baud-rate between 9600 and 115200 bps using the same UART RX pin
- Configurable scanning period that can calculate up to 200 coordinate points per second
- 1.8 to 3.6 volts operation
- 32-pin QFN package
- -40 °C to 105 °C operating temperature
- Normal Run mode, Sleep mode, and Shutdown mode for lower power consumption operation

This document contains information on a product under development. Freescale reserves the right to change or discontinue this product without notice.

© Freescale Semiconductor, Inc., 2007-2012. All rights reserved.

Table of Contents

1	Pins and Connections	3	3	Serial Communications	22
1.1	Device block diagram	3	3.1	I2C interface	22
1.2	Device pin out	4	3.1.1	I2C bit transfer	23
1.3	Recommended system connections	5	3.1.2	I2C START and STOP conditions	23
1.4	Signals description	5	3.1.3	I2C transferring data	24
2	Functional Description	6	3.1.4	I2C acknowledge	24
2.1	CRTouch resistive touchscreen scanning	7	3.1.5	CRTouch I2C slave address	24
2.1.1	Touchscreen electrical signals	7	3.1.6	Message format for Writing CRTouch	25
2.1.2	CRTouch scanning process	8	3.2	UART	25
2.1.3	Resistive events	10	3.2.1	UART Baudrate auto detection	25
2.1.4	Calibration process	10	3.2.2	UART communication protocol	26
2.1.5	Data FIFO	14	3.2.3	Registers Read through UART	26
2.1.6	Resistive gestures	15	3.2.4	Registers Write through UART	27
2.2	Capacitive subsystem	17	4	Memory Map and Registers Description	28
2.2.1	Capacitive touch detection	17	4.1	Device memory map	28
2.2.2	Keypad control	18	4.2	Registers description	34
2.2.3	Rotary and slider control	18	4.2.1	Resistive Touch Status registers	34
2.3	Modes of operation	19	4.2.2	Capacitive Touch Sensing Status registers	41
2.3.1	Run mode	19	4.2.3	Resistive Touch Configuration registers	44
2.3.2	Sleep mode	19	4.2.4	Calibration Values registers	50
2.3.3	Shutdown mode	20	4.2.5	TSS Configuration registers	51
2.4	Internal voltage regulator	21		Appendix A Electrical Specifications	59
2.4.1	Internal voltage regulator features	21		Appendix B Packing Information	62
2.4.2	Internal voltage regulator modes of operation	21			

1 Pins and Connections

1.1 Device block diagram

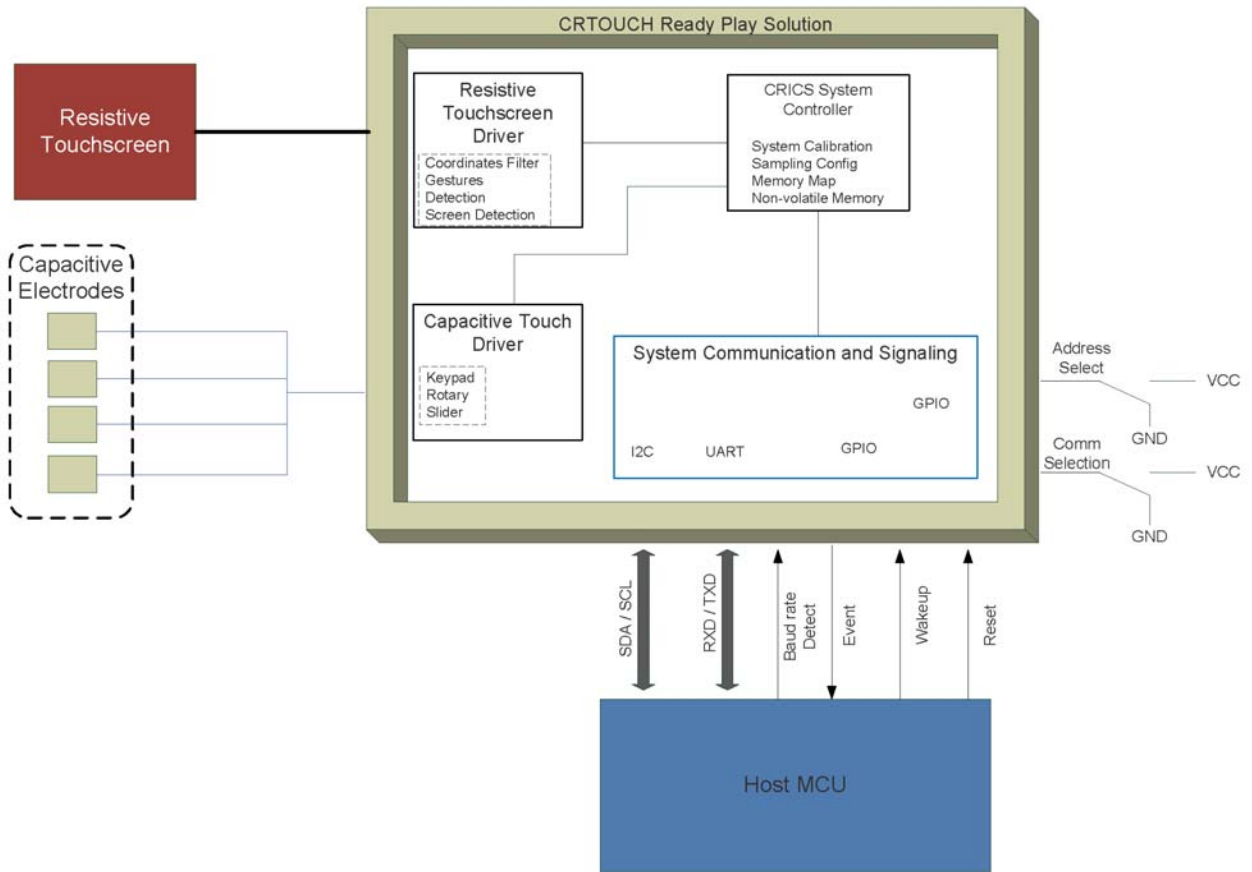


Figure 1. Block diagram

1.2 Device pin out

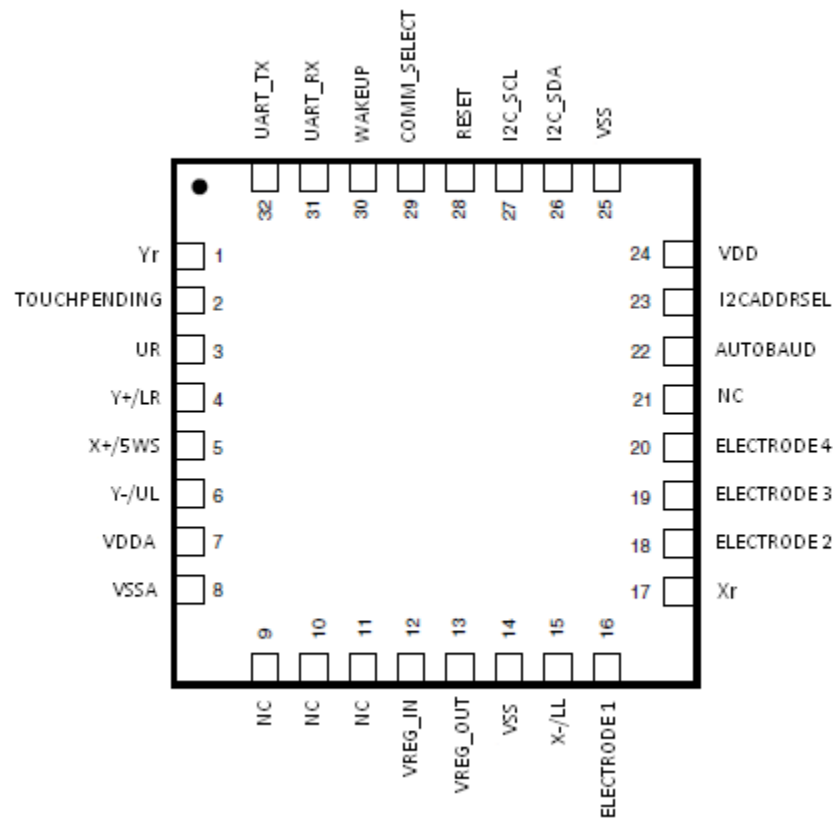


Figure 2. Device pinout

1.3 Recommended system connections

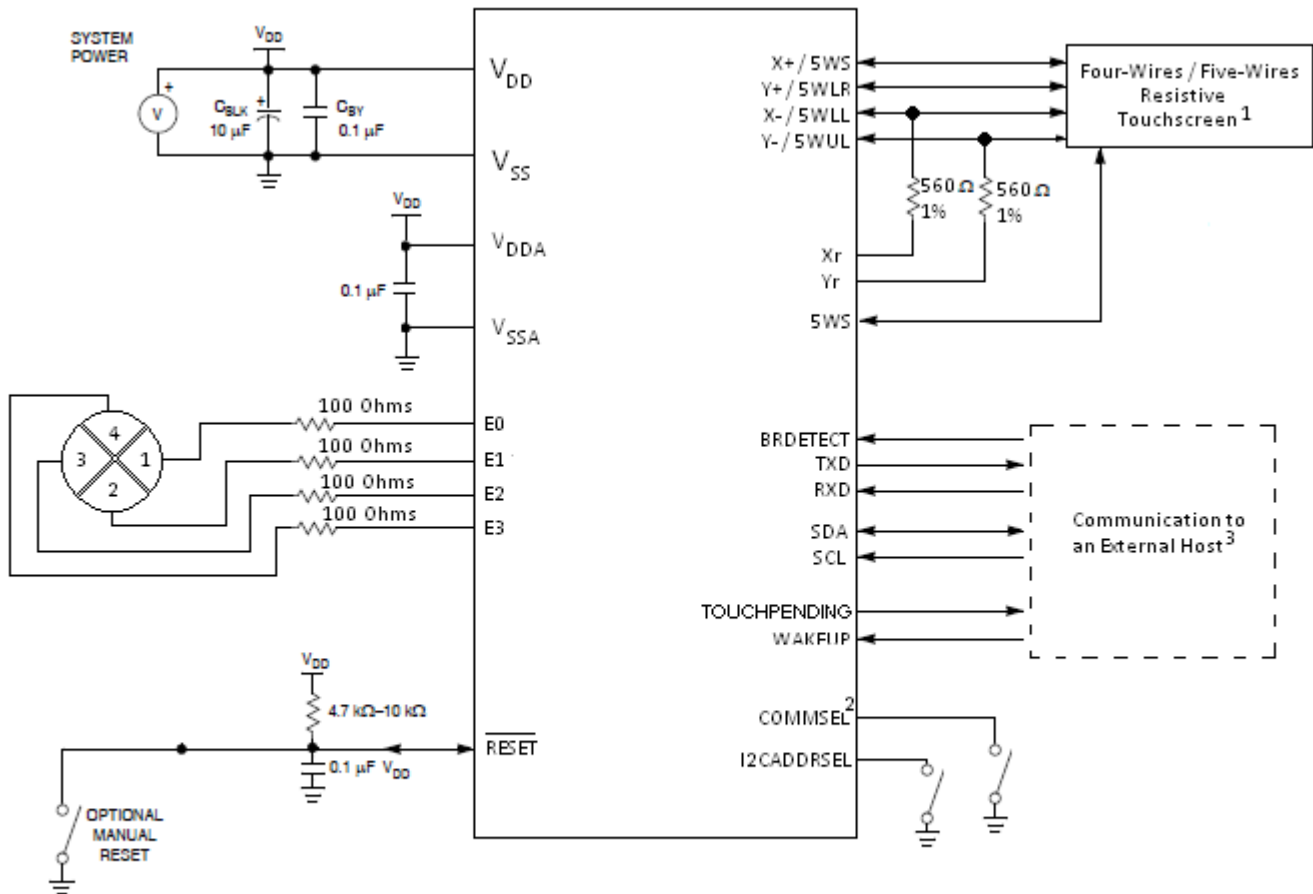


Figure 3. Recommended system connections

NOTE

1. Resistive touch screen signals are bi-directional only for four-wire screens. For five-wire 5WS is input and the other four signals are outputs.
2. COMMSSEL is connected to ground only if UART communication is desired. Otherwise it can be left unconnected.
3. I2C and UART communications are mutually exclusive. Only one can work during the device run time. The other pins from the other communication protocol can be un-connected.
4. All unused pins can be left as Not Connected. Connecting them to ground may increase power consumption.

1.4 Signals description

Table 1. Signal descriptions

Pin	Function used for CRTouch	Description
1	Yr	Y voltage reference
2	TouchPending	Indicates that there is a previous touch event (resistive or capacitive) where data registers have not been read
3	5WUR	5-Wire Upper Right Connection
4	Y+ / 5WLR	4-Wire Y+ or 5-Wire Lower Right connection
5	X+ / 5WS	4-Wire X+ or 5-Wire Sense connection
6	Y- / 5WUL	4-Wire Y- or 5-Wire Upper Left connection
7	VDDA	V _{DD} Signal for the ADC
8	VSSA	V _{SS} Signal for the ADC
9-11	NC	No Connect
12	VREG_IN	Voltage regulator Input
13	V33_OUT	Voltage regulator output –3.3 Volts
14	VSS	V _{SS} – Connect to Digital Ground
15	X- / 5WLL	4-Wire X- or 5-Wire Lower Left connection
16	Electrode1	Capacitive Touch Sensing Key #1
17	Xr	X voltage reference
18	Electrode2	Capacitive Touch Sensing Key #2
19	Electrode3	Capacitive Touch Sensing Key #3
20	Electrode4	Capacitive Touch Sensing Key #4
21	NC	No Connect
22	Baudrate Auto Detect	Signal used to enable Baud Rate auto detection
23	I2CAddrSel	I2C Address Selection pin is used as bit 1 of the I2C address
24	VDD	V _{DD} – Connect to system regulated power supply
25	VSS	V _{SS} – Connect to digital Ground
26	I2C1_SDA	I2C – Bidirectional SDA communication signal
27	I2C1_SCL	I2C – Clock signal. Must be driven by the bus master
28	Reset	Reset signal
29	Com Select	Communication Select Pin. 0 = UART. 1 = I2C
30	Wakeup	Signal used to wake the CRTouch when configured to go into Sleep or Shutdown modes. While in Sleep mode, this pin should be held down with a logical 0 to communicate with the device.
31	UART_RX	UART Reception pin
32	UART_TX	UART Transmission pin

2 Functional Description

The capacitive and resistive touch (CRTouch) is a device capable of interfacing with 4-wire and 5-wire resistive touch screens. It is capable of detecting single touch slide and two-touch rotate and pinch gestures. CRTouch includes a calibration procedure to increase the touch detection accuracy and configurable low power and shutdown modes to reduce power consumption.

2.1 CRTouch resistive touchscreen scanning

2.1.1 Touchscreen electrical signals

The types of resistive touchscreen supported by this device are passive elements composed of two layers of conductive material uniformly distributed across the screen. Due to the resistivity of the conductive material, it can be seen as a resistor between the terminals of each layer. The following figure shows the construction of the 4 and 5 wire types of screens, and their simplified electrical equivalent circuit.

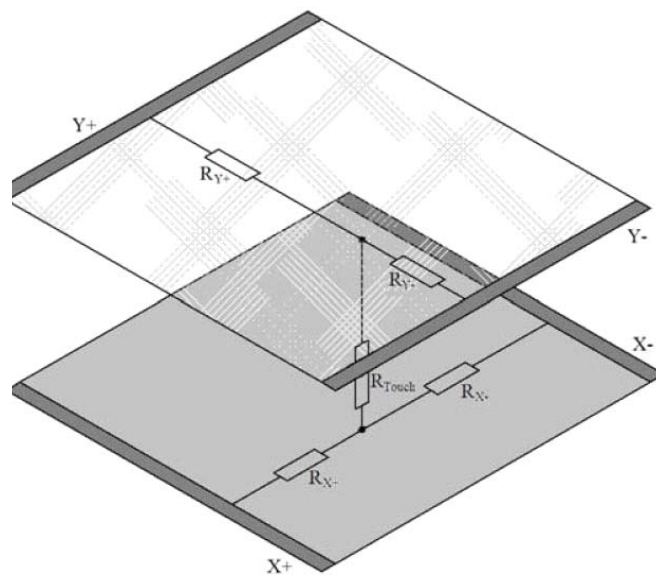


Figure 4. Construction and electrical equivalent of a four wire touchscreen

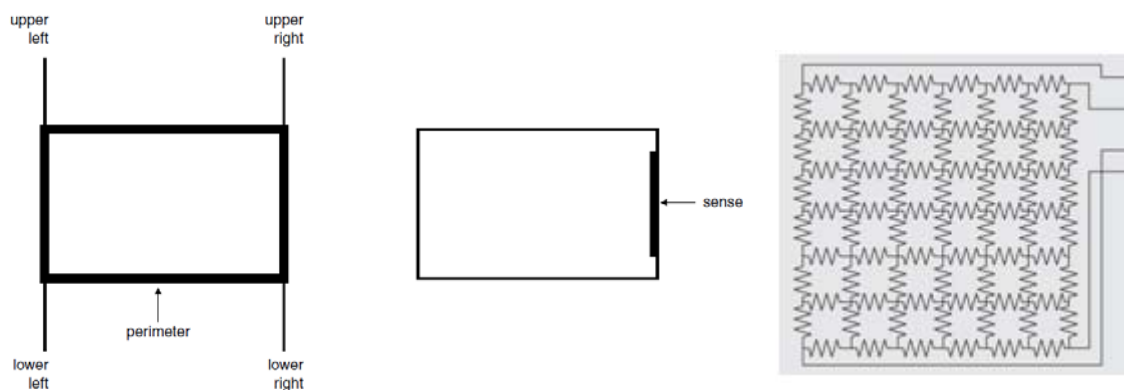


Figure 5. Construction and electrical equivalent of a five wire touchscreen

Functional Description

When a voltage is applied at the terminals of one layer, the voltage is linearly distributed across the conductive material. For a four wire screen, the coordinates of the point of contact can be determined by applying voltage to one layer and reading the voltage on the other. For a five wire screen, one layer is used only for reading the voltage, while the other has voltages applied in different combinations for determining the value of each axis. The following table shows how the signals are activated for X and Y measurements in each type of screen.

Table 2. Signal states for a four wire screen

Measurement	X+	X-	Y+	Y-
X	V _{dd}	V _{ss}	Z	Z
Y	Z	Z	V _{dd}	V _{ss}

Table 3. Signal states for a five wire screen

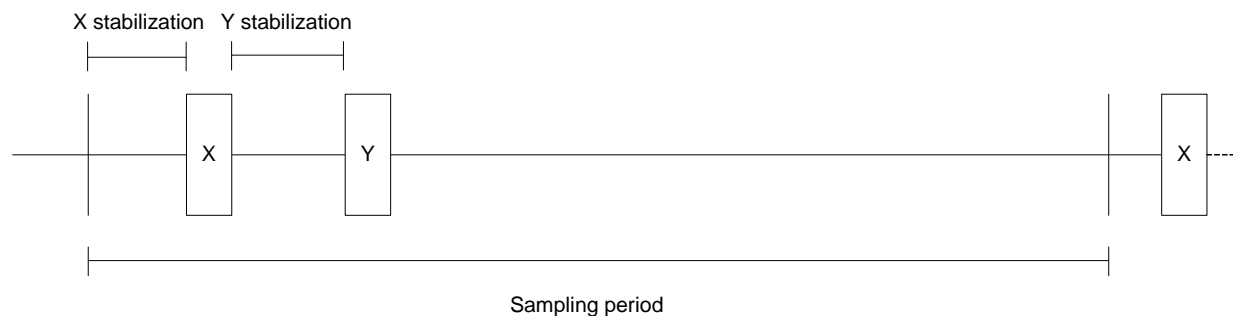
Measurement	UR	UL	LR	LL
X	V _{dd}	V _{ss}	V _{dd}	V _{ss}
Y	V _{dd}	V _{dd}	V _{ss}	V _{ss}

Considering these scanning sequences, the screen's origin (coordinate 0,0) is located in the intersection of the X- and Y- terminals for a four wires screen, and at the LL terminal for a five wire screen. It is also important to consider that the connection between the conductive material of the screen and the terminals of the CRTouch controller represent a series resistance with the screen. Because of this, the coordinates obtained at the edges of the active region of the screen may be a number of counts above 0 and a number of counts below the maximum value. This variation is given by the construction of the touchscreen, the impedance of its connection lines, the size of the active area, and so on.

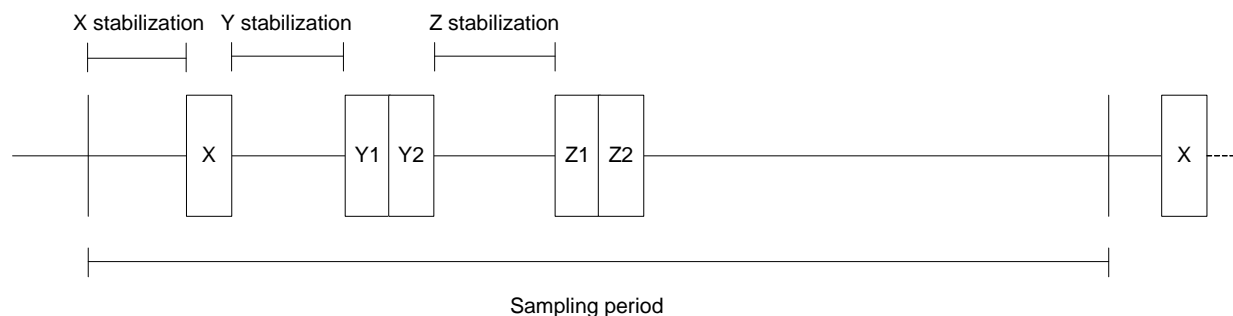
Another electrical phenomenon that needs to be considered is the capacitances created in the screen. Because the active area is composed of two plates of conductive material, this creates a set of capacitances between the two layers. When combined with the resistors created in the screen, these form an RC circuit with an associated stabilization time constant. If the voltage of one layer is read before it stabilizes, then a deviation from the real coordinate is produced. In some devices ESD diodes may be connected to the resistive panel for improved electrostatic immunity. In this case, low capacitance ESD diodes must be used to avoid increasing the resulting capacitance.

2.1.2 CRTouch scanning process

The CRTouch has three scanning modes for the resistive screen. One is active when only X and Y coordinate values are desired, the second activates when the pressure measurement is enabled, and the last one when any of the two touch gestures are enabled. Before each sample is taken, the CRTouch waits for a configurable amount of time for the signals to stabilize. The following figure shows the differences in the scanning process for each scanning mode.



Scanning Process for X and Y coordinates only



Scanning Process for X ,Y, and Pressure

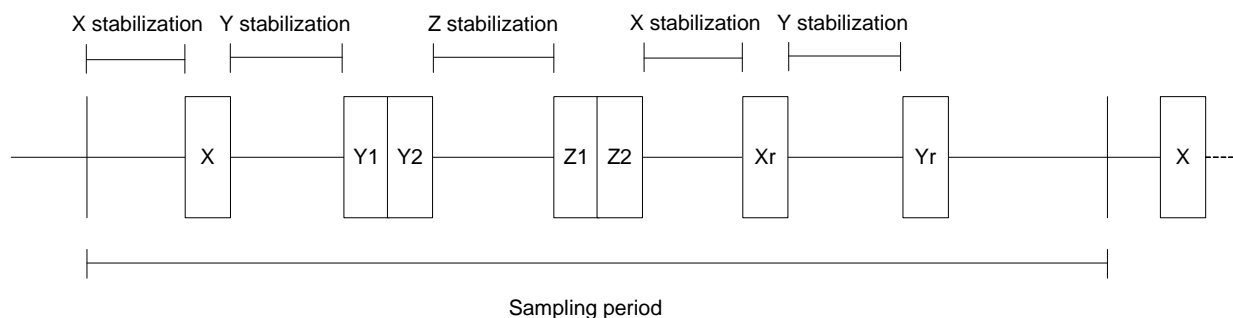


Figure 6. Scanning process for X, Y, pressure, and two touch gestures

As seen in the previous figure, the scanning sequence repeats at a fixed period of time. This period is configurable in the Sampling Time register and may be in the range of 5 ms to 100 ms. The CRTouch scans the screen signals only when a touch is detected. When the screen is not touched, the device stays in a standby state.

At the end of the scanning process, a set of coordinates is produced. These coordinates have a default resolution of 12 bits, or 4096 points per axis. However, this resolution may be modified to reflect the proportions of the screen more accurately (typical screens have a 4:3 or 16:9 proportion). This can be done by writing to the horizontal resolution and vertical resolution, which correspond to the X and Y resolution respectively. The resulting X and Y values are scaled to fit into this resolution.

The CRTouch is capable of autodetecting the type of the screen connected. The type of screen detected is reflected in the Status Register 2. Only two touch gestures and pressure detection is available for 4 wire screens, and cannot be enabled when a 5 wire screen is connected.

2.1.3 Resistive events

The CRTouch has a TouchPending signal that can assert on configurable events in the system to alert the host of a new event that requires attention. This signal can be used by the host to avoid time based polling of the status of the device and therefore unnecessary use of the communication bus. Whenever an event is detected in the system, it will be reflected in its associated bit in Status Register 1. All event bits of this register remain latched and are cleared until the register is read. This avoids losing any detected event if the host cannot read the status of the device for several sampling periods. Each event can also be enabled to assert the TouchPending signal through the Triggers Enable register. By setting the bits in this register, when an event is recorded in the status register the TouchPending signal is asserted, and remains asserted until the status is read.

The most basic events that are related to the touchscreen are the resistive new sample and the touchscreen release events. The resistive new sample is triggered when a new sample of the screen coordinates is available, which means that it is produced at the touch detection and subsequently at every scan period. The release event is produced only when the screen transitions from touched to not touched. In this case the last valid coordinates value remains in the Coordinate registers.

Additional to the events status, the Status Register 1 reflects the state of the screen through its most significant bits, screen touched and two touch bits. These bits are updated with each sampling period and unlike the events bits, they are not latched and are not cleared with a register read, so their value always reflects the state of the screen at the last scanning sequence.

When the screen transitions to the touched state, the Resistive Touch Screen Touched and the Resistive New Sample Event bits in the Resistive Touch Status Register 1 are set. With every new coordinate sample, the Resistive Touch Screen Touched and the Resistive New Sample Event bits will be set after the coordinate values are available in the X and Y coordinates registers. When the screen is released, the Resistive New Sample Event bit will be set, indicating the end of the scanning sequence, but the Resistive Touch Screen Touched bit will now be cleared, reflecting the released state of the screen. After this condition is met, no more touchscreen events will be reported in the status register or the TouchPending pin until a new touch is detected in the screen.

The TouchPending signal is active low and is capable of driving an LED if user feedback is desired.

2.1.4 Calibration process

The resistive touch screen should be calibrated to get an accurate performance. This includes X and Y coordinate and gesture detection. The calibration process consists of a series of points touched by the user to give the device references on the screen orientation, offsets, and linearity. Two different processes may be executed: one, for only single touch calibration, the other for single and two touch calibration. In both cases, three different points need to be touched for single touch calibration. It is recommended that these points be touched with a stylus to increase the precision achieved. In the case of two touch calibration, two pairs of points need to be touched. As expected the two touch gestures are performed with fingers, these pairs of points must also be pressed with fingers.

The three single touch calibration points are the following: The first coordinate should be at 10% of X and 10% of Y axis. The second coordinate should be at 50% of X and 90% of Y axis. The third coordinate should be at 90% of X and 50% of Y axis. The two pairs of two touch coordinates are the following and may be pressed in any order: The first pair is at 50% on the X axis and 10% and 90% on Y axis; the second pair is 50% on Y axis and 10% and 90% on X axis.

These percentages correspond to the graphic display screen resolution. The Horizontal Display Resolution and Vertical Display Resolution must be configured with the corresponding display resolution before executing the calibration process. Note that both registers must be written for their new values to take effect. When the CRTouch is calibrated with the correct resolution, the X and Y coordinates calculated by the device directly correspond to the display pixels and need no additional processing by the graphics controller. Usually the user application displays an image showing the calibration points one at a time that must be touched to calibrate the screen.

For increased precision, the CRTouch performs a validation of the touched points during calibration to determine if the values are within the expected range. When the validation is not positive, a calibration error is signaled in the Status Error register. This validation mechanism does not prevent the device from being calibrated. It serves as information to the host processor to determine if the calibration was executed correctly. Other methods of validation can be to display an additional point in the display and verify that the coordinate reported by the CRTouch corresponds to the displayed point. The built-in validation mechanism is accurate only within a 5° diphas between the display and the touch panels.

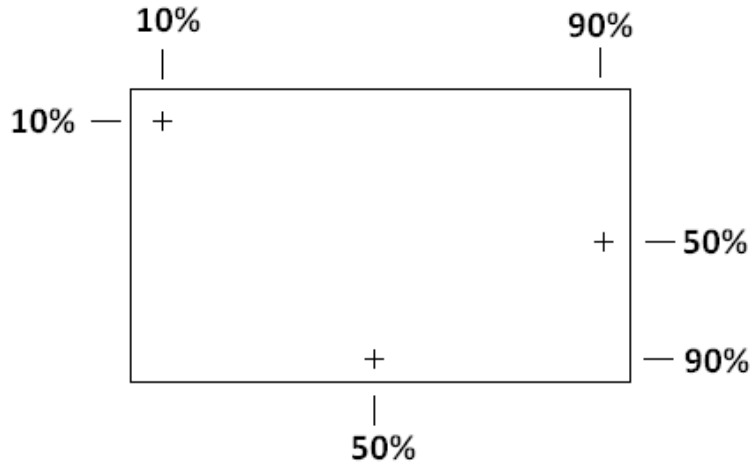


Figure 7. Touch points for single touch calibration

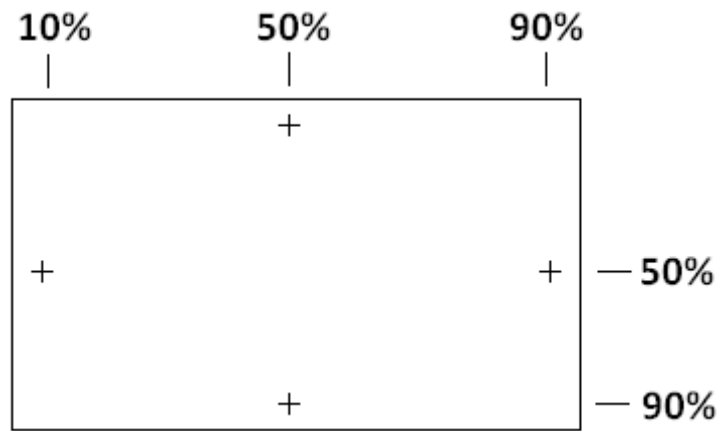


Figure 8. Touch pairs for two touch calibration

The calibration process is initiated by setting bit6 into the Trigger Events register. For two touch calibration at least one of the two touch gestures must be enabled prior to starting the calibration process. It is also important to properly configure the resolution values to match the screen ratio, to increase the precision of the gestures detection especially for the rotate gesture. The following diagrams show the sequence of actions followed after setting the calibration bit to start the process.

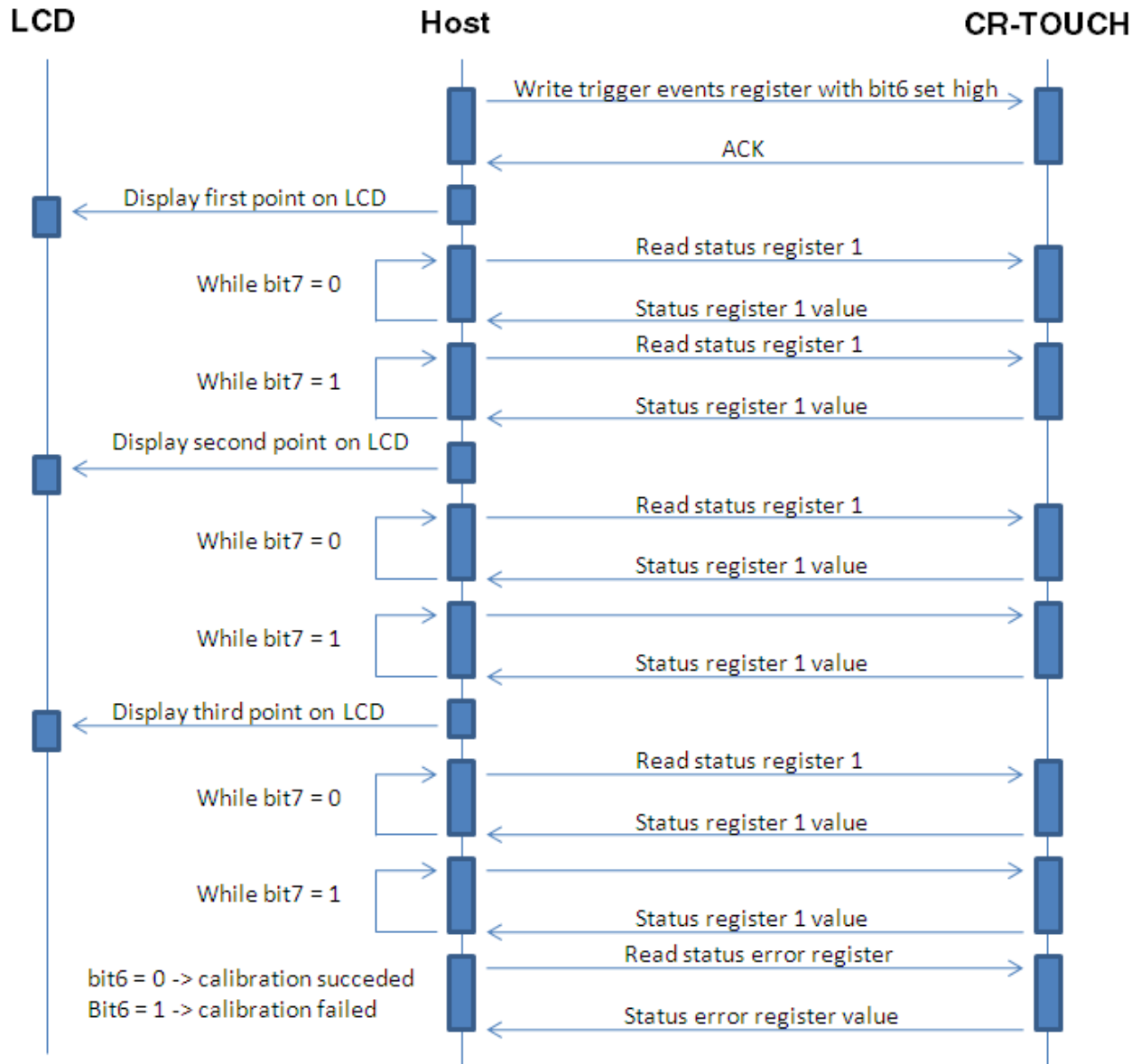


Figure 9. Single touch calibration sequence

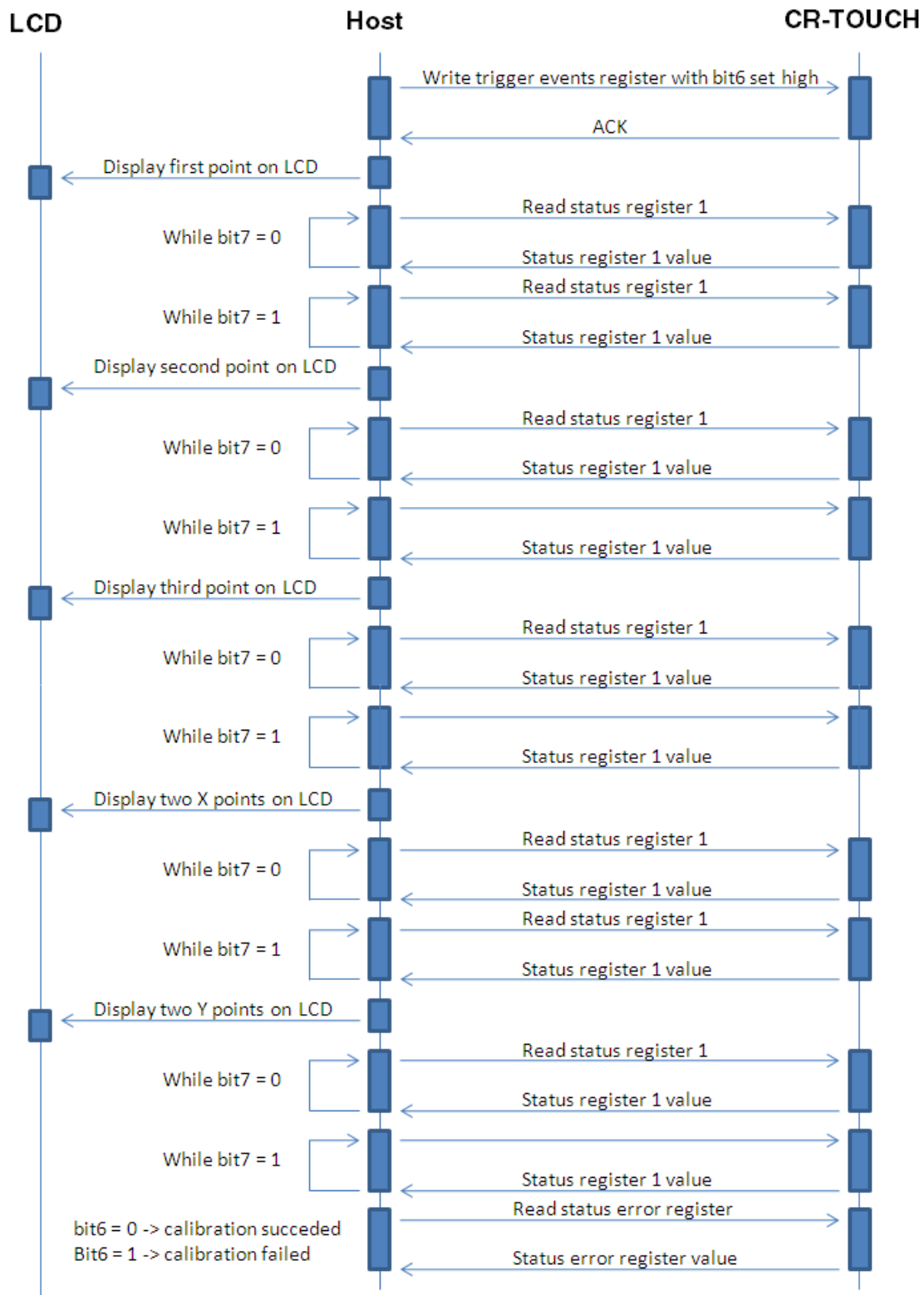


Figure 10. Single and two touch calibration sequence

Functional Description

During calibration, the touch screen scan period is fixed at 10 ms, regardless of the value configured in the Sampling Rate register. For each point, 128 samples are taken, so each point should be held at least for 1.3 s for proper calibration.

The calibration processed may be stopped at anytime by clearing bit6 on the Trigger Events register. A sampling period must pass before enabling it again for a new calibration process. To discard an established calibration both of the display resolution registers must be written. It is also possible to calibrate the CRTouch device through the Calibration Values set of registers without any touches required by the user. This is particularly useful for factory calibration to reduce the time required for this process. In this case, a system must be manually calibrated to generate the calibration values that can be reproduced to other devices. It is important to consider that the precision achieved by this method depends on the repeatability of the touch sensor impedances by the manufacturer. After writing the values to these registers the CRTouch must be reset for the calibration to take effect.

2.1.5 Data FIFO

The device has three FIFO buffers, one for X coordinates, one for Y coordinates, and one for Pressure values. Each FIFO buffer stores up to 16 samples and new samples can not be stored once the FIFO buffer is full. Each point touched on the screen yields one X coordinate and one Y coordinate which are store onto its respective FIFO buffer. If pressure is enabled on the device, then each point yields also a pressure value that is stored onto its respective FIFO buffer.

The three FIFO buffers are synchronized and should be read in sequence. The device has a mechanism avoiding that just one FIFO buffer is read. If there are samples on the FIFO buffers and just one of them is read several times the device will report the same value until the other FIFO buffers is read. This means if the pressure is enabled the X FIFO buffer, Y FIFO buffer, and Pressure FIFO buffer should be read once before trying to read any of them again. If Pressure is disabled then only X FIFO buffer and Y FIFO buffer should be read.

Setting the RTFIFOEN bit into the FIFO Setup register enables the FIFO buffers. Clearing this bit disables the FIFO buffers. X, Y, and Pressure FIFO buffers are flushed each time the FIFO Setup register is written. The device returns the value 0xFFFF if the FIFO buffers are disabled or empty.

If the FIFO buffers are enabled a watermark can be configured to generate an event once the number of samples stored onto the FIFO buffers are bigger or equal than the watermark. The watermark is disabled by setting a zero value.

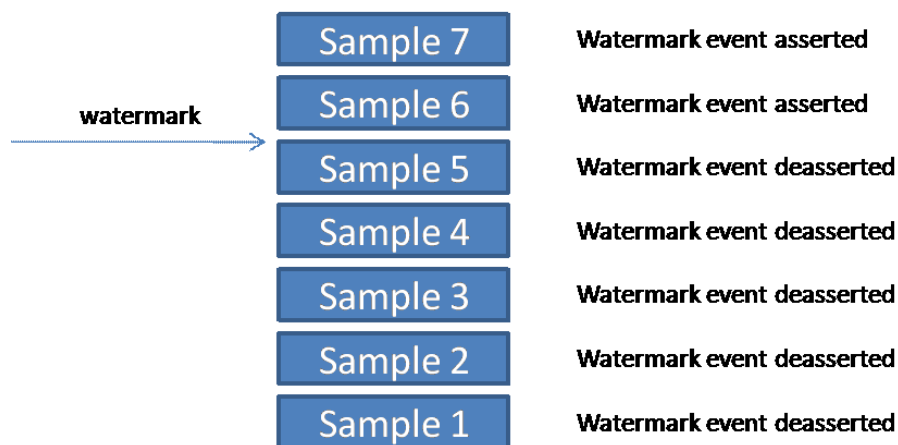


Figure 11. FIFO Watermark example

2.1.6 Resistive gestures

The CRTouch controller has built-in gestures detection capabilities with unique support for zoom and rotate multi-touch gestures, as well as single touch slides. This feature offloads the host processor of continuous coordinate reading and processing for gesture detection.

2.1.6.1 Slide

A slide is detected for linear motion in any region of the screen in a direction parallel to any axis of the screen. This means that any motion that varies only one axis can be detected as a slide. The detection algorithm supports a deviation of 7.5° from the axis direction to still consider the motion as a slide. The following figure shows the valid ranges for a slide motion.

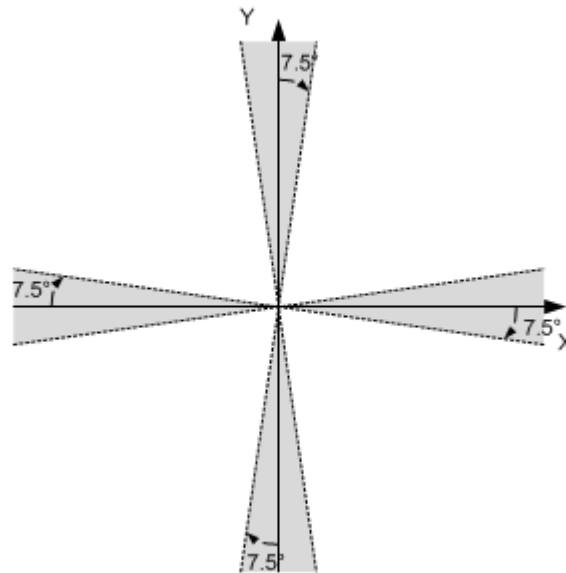


Figure 12. Slide valid regions

The slide gesture is enabled through the slide enable bit in the Configuration Register, and it is reported through the Slide Event bit in the Status Register 1. A slide can be performed in four different directions: horizontal or vertical, positive or negative in each case. The direction of the gesture is reported in the Status Register 2 through the Slide Direction [1:0] bits. The following table shows the reported value for each case.

Table 4. Slide gesture directions

Motion	Direction	Slide Direction [1:0]
$X0 < X1, Y0 = Y1$	Horizontal positive	00
$X0 > X1, Y0 = Y1$	Horizontal negative	01
$Y0 < Y1, X0 = X1$	Vertical positive	10
$Y0 > Y1, X0 = X1$	Vertical negative	11

The slide gesture is reported when the motion distance is higher than a configurable threshold. This threshold is a portion of the screen resolution across each axis. For a vertical slide, a portion of the Y resolution is the threshold and for a horizontal slide, a portion of the X resolution is the threshold. This portion is defined by the Slide Steps register value. For a value of ten, the

Functional Description

threshold is set to one tenth of the resolution; a value of one would mean one unit of the resolution, which cannot produce a slide because no motion may have a distance greater than the resolution.

The Slide Displacement register reports the accumulated steps of the motion after it begins, therefore each time the threshold is crossed, this value is incremented. This value is reset if a change of direction is detected or when the screen is touched after a release.

2.1.6.2 Two touch gestures

The CRTouch device is capable of detecting when two independent touches are present in the screen and when Zoom and Rotate gestures are performed by these two touches. Two touch detection is enabled when either Zoom or Rotate are enabled in the Configuration register. When two touches are detected, the Two Touch bit in the Status register 1 is set. In this state, coordinates reported in the X and Y registers should be disregarded by the display controller. When detecting a two touch event, the CRTouch continuously measures displacement of the fingers. This displacement may reflect in terms of the distance between the fingers (Zoom gesture), the slope of the line between the fingers (Rotate gesture), or both.

For two touch gestures to operate, it is mandatory to run the calibration process described in section [Section 2.1.4, “Calibration process.”](#) Two touch gestures and display resolution must be configured before running the calibration to properly calibrate the gesture detection. For two touch gestures, the CRTouch uses internally a different resolution for the distances between the fingers in each axis. The smaller axis has a fixed resolution of 1000, while the other axis resolution is calculated to match the screen proportions. For a screen with 16:9 proportions, for example, one axis would have a resolution of 1000 and the other of 1777. The screen proportion is calculated according to the Vertical Resolution and Horizontal Resolution values. These values are used to calculate the distance between the fingers.

$$TwoTouchResolutionA = 1000 \quad \text{Eqn. 1}$$

$$TwoTouchResolutionB = 1000 \times \frac{HorizontalResolution}{VerticalResolution} \quad \text{Eqn. 2}$$

or

$$TwoTouchResolutionB = 1000 \times \frac{VerticalResolution}{HorizontalResolution} \quad \text{Eqn. 3}$$

Whichever is the highest.

$$MaxTwoTouchDistance = \sqrt{ResolutionA)^2 + (ResolutionB)^2} \quad \text{Eqn. 4}$$

The signals required for two touch detection are obtained through the resistors connected to the Xr and Yr signal. Unexpected behaviors may be produced if these resistors are not connected and two touch gestures are enabled.

2.1.6.3 Zoom gesture

When the distance between the fingers varies, a zoom gesture is detected. If the distance increases, a zoom-in direction is reported through the RTSZD bit in the Status Register 2. If the distance decreases, a zoom-out direction is reported through the RTSZD bit in the Status Register 2. In either case, the RTSZ bit is set in Status Register 1. Similar to the slide gesture, the zoom gesture is reported when a threshold is crossed. This threshold is approximately one tenth of the smaller axis of the screen. The Zoom Size register is updated each time the threshold is crossed and is cumulative throughout the gesture. The value of this register is equal to one tenth of the distance displacement.

$$ZoomSize = \frac{|InitDistance - ActualDistance|}{10} \quad \text{Eqn. 5}$$

The maximum distance reported in the Zoom Size register can vary this depends on the proportions of the screen.

2.1.6.4 Rotate gesture

The rotate gesture is reported when a variation of the slope between the fingers is detected. This variation must be at least 10° for it to be reported in the RTSR of the Status Register 1. The direction of the rotate gesture is reported in the RTSRD in the Status Register 2. The Rotate Angle register reflects the cumulative angle that has been displaced in that direction. This angle is reported in radians with 5 fractional bits and 3 integer bits. This determines a limit of 456° of continuous rotation that can be reported by the CRTouch. The following equation can be used to convert the value of the Rotate Angle register to a value in degrees.

$$\theta = \frac{(RotateAngle)*180}{32\pi} \quad \text{Eqn. 6}$$

2.2 Capacitive subsystem

The CRTouch controller supports up to four capacitive electrodes as an extended interface. These electrodes may be detected independently or they can be arranged in a keypad, rotary or slider control configuration. The capacitive subsystem is enabled through the Configuration register with the Capacitive Control [1:0] bits according to table 4. Additionally, each of the electrodes of the CRTouch controller may be individually enabled or disabled in the Electrode Enablers register.

Table 5. Capacitive control configuration bits

Capacitive Control [1:0]	Configuration
00	Capacitive subsystem disabled
01	Rotary control enabled
10	Slider control enabled
11	Keypad control enabled

When enabled, the capacitive electrodes are scanned sequentially, from E0 to E3, at a fixed rate of 7 ms. The capacitive subsystem of the CRTouch controller has a set of configuration and status registers to control several features.

NOTE

Before the desired control is enabled through the Configuration Register, the desired events to be detected must be enabled in the Capacitive register; otherwise the control will not be enabled.

2.2.1 Capacitive touch detection

The touch detection is based on a baseline tracking algorithm and thresholds for touch detection. When the system is enabled, an initial baseline is calculated and continuous baseline recalibration can be enabled through the DCTracker feature with the DC tracker enable bit in the capacitive system configuration. This recalibration is executed at a fixed number of scanning periods, determined by the DC Tracker Rate register value. Since the scanning period is fixed at 7 ms, the recalibration period is equal to the DC Tracker Rate register value multiplied by 7 ms.

To detect a touch, the capacitance samples taken for each electrode are compared against the baseline. If a number of consecutive samples exceed a certain threshold then that electrode is considered and reported as touched. These thresholds are defined by the Ex Sensitivity registers and represent the minimum difference that must exist between a capacitive sample and

Functional Description

the signal baseline for a touch to be detected. To avoid false touch detection due to sporadic noise, the Response Time register defines how many samples the algorithm will consider to determine a touch or a no touch condition.

After an electrode has been detected as touched, recalibration is not performed for that electrode to avoid recalibrating the baseline at a non-idle signal level. However, under certain environmental conditions, large and sudden changes in the measured capacitance may occur which may trigger a touch detection. If this condition persists (excessive humidity over an electrode, for example), the affected electrode will not be able to detect real touches. For this kind of scenario, the stuck key feature allows the host to define a touch timeout, after which the touched status is released and the electrode is recalibrated.

The actual status of each individual electrode may be read at the Electrode Status register. Each bit represents the status of one electrode, reporting a 1 when the electrode is detected as touched and a 0 when the electrode is not touched.

For application customization of these parameters, the CRTouch controller provides a set of registers that allow the analysis of the capacitance behavior of each electrode under the specific application conditions. The Electrode Baseline registers and Electrode Instant Delta registers provide this information.

The resolution of the capacitive samples and the calculated baselines can be modified through the Capacitive Resolution registers. Increasing or decreasing the resolution is useful depending on the thickness of the dielectric used. This allows to modify the signal (touch) to noise ratio for more flexibility on the touch detection. This value is only effective after a reset, a reset is then needed to make a change in this register to take effect.

2.2.2 Keypad control

The keypad control supports the reporting of touch or release events for each individual electrode. These events are reported through an events buffer and each of them is enabled through the Events register. The events buffer is mapped to the Electrodes FIFO register of the device. Each read of this register returns the oldest previously stored in the buffer, until the buffer is empty and any subsequent read returns a value of 0xFF. The format of the events in the buffer may be consulted in the registers section of this document.

Additionally to the touch detection, the keypad control provides an autorepeat feature, to log new touch events into the buffer at a certain rate after detecting the electrode as touched for a period of time. The Auto-repeat Start register controls the timeout before it starts logging new events, and the Auto-repeat Rate register controls how often a new event is stored in the buffer.

The keypad control also provides the capability of restricting the number of keys that may be pressed at the same time. This is done by writing a value different than 0 in the Max Touches register. When the number of simultaneous touches is equal to the Max Touches register, no new touch events for additional keys are stored in the events buffer until one or more keys are released.

2.2.3 Rotary and slider control

The slider and rotary control types provide support for linear or circular arrangements of electrodes. A rotary may be seen as a circular slider, where the first and last electrodes are adjacent. In the case of a rotary a simultaneous touch of these two electrodes is considered valid, where in a slider it is not. This is the only difference between these two types of controls, otherwise all of their behavior is the same.

Slider and rotary controls are oriented to the detection of motion through the control, so they provide the capability to detect this motion, report its direction, and the amount of displacement. The control is also capable of reporting when the initial touch is detected, when the motion ends and when all of the control's electrodes have been released. All these events are enabled through the Events register.

Two status registers are provided for these controls, the Static Status register and the Dynamic Status register. The Dynamic Status register reports if movement is being detected at the moment through the Movement Flag, reports the direction of this movement in the Direction bit and how many positions were advanced since the last status. The static status reports if the control is currently touched through the touch flag, the position of the touch, and if an invalid position is detected.

To increase the number of positions detectable in a rotary or slider control, positions “between” the electrodes are also reported. This means that when two electrodes are touched, the control reports a position different than the position of each of the touched

electrodes. For example, E0 corresponds to position 0, E0 and E1 correspond to position 1, and E1 corresponds to position 2. When more than two electrodes are touched, the central position is reported.

2.3 Modes of operation

The CRTouch operating modes are described in this section. Entry into each mode and exit from each mode as well as the function while in each of the modes are described.

2.3.1 Run mode

This is the normal operating mode for CRTouch which is the default mode for a new device. In this mode the device is not entering into low-power nor shutdown modes at any time. Serial communications are active all the time waiting for a command to be received. Scanning of a resistive touchscreen panel will be performed periodically as defined in the Sampling Rate register.

During run mode, all the internal circuitry remains enabled all the time. All the functions do not have any constraints or special considerations to be used while in this mode. Power consumption is higher than in any other operating mode.

2.3.2 Sleep mode

Sleep mode is enabled through the SLEEPEN bit in the Configuration Register. This mode sends the part into a low power mode between scanning periods of a resistive touchscreen panel. When the part is in sleep mode it turns off the internal clocks for the serial communication peripherals, both UART and I2C. The overall function of the device is the same compared to normal run mode, with the exception of communication interfaces.

2.3.2.1 CRTouch function in sleep mode

When Sleep mode is enabled, the part will remain in this state until the timeout configured in the Sampling rate register expires. After the Sampling Rate period expires, the part will start the sequence to scan if the resistive touch screen connected has a new coordinate and calculate the X and Y coordinates and gestures detection if needed.

Besides a sampling rate period expiration, there are two additional ways to transition from Sleep mode into Run mode:

- Wakeup pin—The active low wakeup pin will transition the part from Sleep mode into run mode. While being asserted, the device will remain in run mode. The part will return into Sleep mode after the signal has been de-asserted, unless there is an active communication (UART or I2C) or the part is actively scanning a resistive touchscreen panel. For the communication case, the communication timeout rules will apply before going back to Sleep mode. When the part is scanning the resistive touchscreen panel, it will go back to sleep mode as soon as the scanning process finishes.
- Serial communication—Either UART or I2C can transition the part from sleep mode into run mode. Each communication interface has specific characteristics and rules while working in sleep mode.

2.3.2.2 I2C communication in sleep mode

If I2C communication is selected for CRTouch communication, a start condition followed by a Slave Address match can be used to wakeup the part from sleep mode and transition to normal run mode. Because the I2C internal clock was turned off until the slave address matched, CRTouch answers with a Not Acknowledge to this initial request. There are two alternatives to use I2C communication with Sleep mode enabled:

- Include in the host the logic a re-send of the Slave Address with the appropriate read or write request upon reception of a not acknowledge.

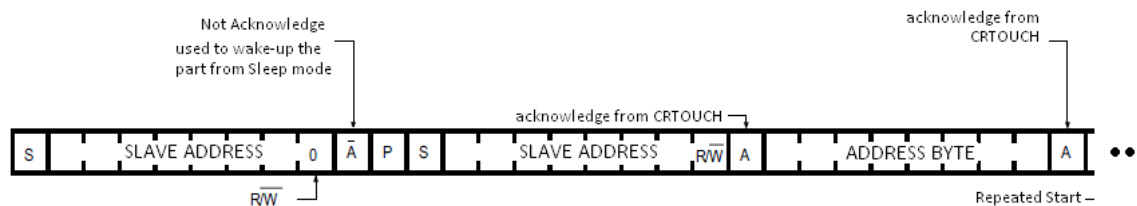


Figure 13. CRTOUCH wakeup using I2C communication

- Use the wakeup signal to bring the part into normal run mode before starting any I2C communication. It is important to return the wakeup signal into its idle state (high) after the communication is finished, otherwise the part will remain into normal run mode increasing the overall system power consumption.

When the wakeup pin is used to return the part to run mode, the system will remain in this state for 50 μ s. If a new communication starts with a Start condition followed by the device slave address and a valid command for the CRTOUCH while in normal run mode, the part will remain in run state. It will return to sleep mode only after the communication remains idle for 1ms after receiving a stop condition. When the part wakes by receiving its slave address through I2C, it remains in run mode for 1ms waiting for a new communication to start. It goes back to sleep mode after 1 ms of inactivity on the I2C bus.

2.3.2.3 UART communication in sleep mode

When UART communication is used for CRTOUCH, a start bit will transition the part from sleep mode to run mode. When the part is in sleep mode the internal clock used for the UART communication is off. Upon reception of a start bit the internal clock is re-started, the part returns into normal run mode and the communication can be resumed normally.

In the majority of the cases the byte that wokeup the part is properly received and stored. The exception to this rule occurs when the internal circuitry is transitioning from normal run mode (either because of a previous communication, wakeup pin use, or screen X and Y coordinates calculation) into sleep mode. If the UART start bit is received at the exact moment the internal circuitry starts the transition, the initial byte (start of frame) will be lost. This will result in a complete frame loss when it occurs. There are three alternatives when enabling Sleep mode using UART:

- Send the start of frame byte twice in each frame.
- Asserting the wakeup pin for at least 10 μ s before sending the start of frame. It is important to return the wakeup signal into its idle state (high) after the communication is finished, otherwise the part will remain in normal run mode increasing the overall system power consumption.
- Implementing a timeout on the host side to retry the command if there is no response received within the next 1ms of sending the command.

2.3.3 Shutdown mode

Shutdown is enabled through the SHUTDOWN bit in the Configuration register. This mode sends the part into the lowest power consumption state. In this mode, all the resistive touchscreen scanning, serial communication and any other internal activity are stopped. This mode is intended for when a device is in a standby or hibernating state and wishes to reduce power consumption to its minimum.

There are three ways to come out of Shutdown mode:

- Asserting the wakeup signal for more than 10 μ s
- Using the reset pin
- Optionally enabling a capacitive electrode as wakeup source and performing a touch on it.

In all cases the part will recover the latest value for the configuration registers and will resume will resume normal operating mode. The part will use either normal run mode or Sleep mode based on the latest configuration for the SLEEPEN bit before going into Shutdown.

Any of the capacitive electrodes may be enabled as a Low Power Electrode and can be configured for a scanning period and sensitivity. To enable this electrode as a wakeup source from Shutdown, the CLPEN bit must be enabled in the Capacitive System Configuration register. Enabling this bit inhibits normal functioning of all the electrodes, therefore it should only be enabled prior to sending the device into Shutdown mode. Baseline tracking is not performed for the Low Power Electrode.

2.4 Internal voltage regulator

The voltage regulator module is a LDO linear voltage regulator to provide 3.3 V power from an input power supply varying from 2.7 V to 5.5 V. It consists of one 3.3 V power channel. The internal voltage regulator can be used to be the main power supply of the device. When the input power supply is below 3.6 V, the regulator goes to pass-through mode.

2.4.1 Internal voltage regulator features

- Low drop-out linear voltage regulator with one power channel (3.3 V)
- Low drop-out voltage— 300 mV.
- Output current—120 mA.
- Three different power modes— RUN, SLEEP, and SHUTDOWN.
- Low quiescent current in RUN mode.
- Typical value is around 120 μ A (one thousand times smaller than the maximum load current).
- Very low quiescent current in STANDBY mode.
- Typical value is around 1 μ A.
- Automatic current limiting if the load current is greater than 290 mA.
- Automatic power-up once some voltage is applied to the regulator input.
- Pass-through mode for regulator input voltages less than 3.6 V
- Small output capacitor— 2.2 μ F
- Stable with aluminum, tantalum, or ceramic capacitors.

2.4.2 Internal voltage regulator modes of operation

The regulator has these power modes:

- RUN— The regulating loop of the RUN regulator and the SLEEP regulator are active, but the switch connecting the SLEEP regulator output to the external pin is open.
- SLEEP— The regulating loop of the RUN regulator is disabled and the standby regulator is active. The switch connecting the SLEEP regulator output to the external pin is closed.
- SHUTDOWN— The module is disabled.

This is the recommended connections to power CRTouch from internal voltage regulator:

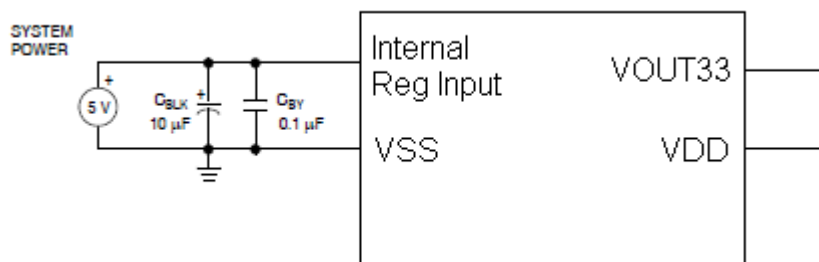


Figure 14. Connections to power CRTouch from internal voltage regulator

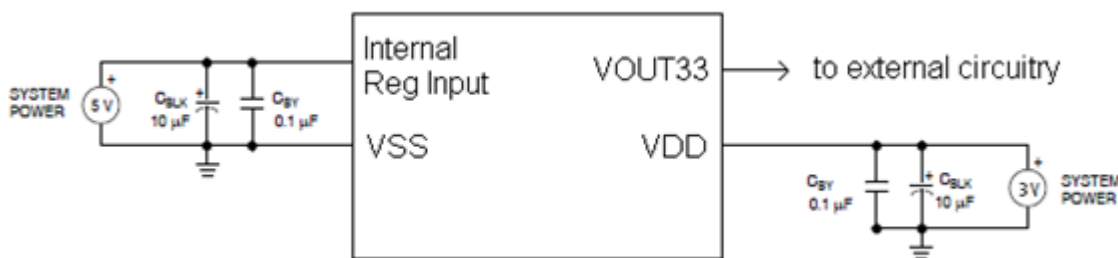


Figure 15. Recommended connections to power external circuitry from internal voltage regulator

3 Serial Communications

The CRTouch is a four wire and five wire resistive touch Screen and a four key capacitive touch sensing device. It can interact with a master device either through UART or I2C interfaces

3.1 I2C interface

The registers inside CRTouch can be accessed through the Inter-Integrated Circuit serial interface (I2C, I²C, or IIC). The I2C interface provides a method of communication with a number of devices and the CRTouch can act only as a slave device inside an I2C network, therefore it will respond to read and write operations from a Bus master and can never initiate a communication within the bus. To enable the I2C interface, COM SEL must be tied high when coming out of reset.

CRTouch operates as an I2C slave that sends and receives data through the SDA line on an I2C bus. A bus master initiates all data transfers to and from CRTouch, and generates the SCL clock that synchronizes the data transfer.

The CRTouch line operates as an open drain bidirectional signal. A pull-up resistor (typically between 4.7 Ω and 10 KΩ) is required on CRTouch. For CRTouch, SCL is an input only signal which also requires an external pull-up.

Each transmission is initiated with a START condition generated by the master, followed by the CRTouch slave address (7 bits) plus one bit that indicates if the transaction is a read or write operation, in the case of write sequences it includes one register address byte and 1 to N data bytes for read or write transactions, followed by a STOP condition that indicates the end of that transmission.

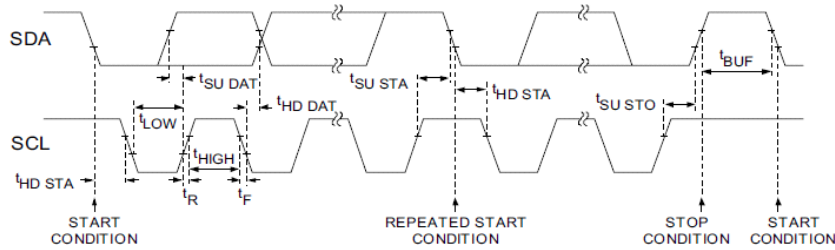


Figure 16. I2C START and STOP conditions and timing

3.1.1 I2C bit transfer

Because CRTouch can operate with different voltages, the levels of the logical low and high values are not fixed and depend on the associated level of V_{DD} .

The data on the SDA line must be stable during the HIGH period of the clock. Any change on the SDA line for data transmission can only occur when the clock signal on the SCL line is LOW.

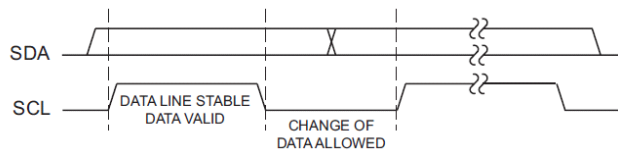


Figure 17. Bit Transfer

3.1.2 I2C START and STOP conditions

A transition to low on the SDA line while SCL is high indicates a start (S) condition. A transition to high on the SDA line while SCL is high defines a STOP (P) condition.

START and STOP conditions are always generated by the master. The bus is free when no master device is engaging the bus (both SCL and SDA are high). When the bus is free, a master may initiate communication by sending a START signal. The bus is considered to be busy after the START condition. The bus is considered to be free again at a certain time after the STOP condition.

The bus stays busy if a repeated START (Sr) is generated instead of a STOP condition. The START (S) and repeated START (Sr) are functionally identical, therefore the S symbol will be used as a generic term to represent both the START and repeated START conditions, unless Sr is particularly relevant.

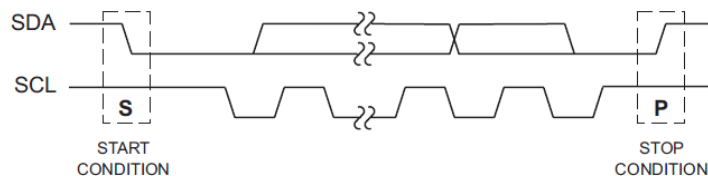


Figure 18. START and STOP conditions

3.1.3 I2C transferring data

The number of bytes that can be transmitted per transfer is unrestricted. Each byte has to be followed by an acknowledge bit. Data is transferred with the most significant bit (MSB) first. Within each byte, there must be 8-data bits and one acknowledge bit.

3.1.4 I2C acknowledge

Data transfer with acknowledge is obligatory for the I2C protocol. The acknowledge-related clock pulse is generated by the I2C master as a 9th bit which the recipient uses to handshake reception of each byte of data. Thus each byte transferred effectively requires 9 bits. To acknowledge a byte, the device sending data through the I2C bus releases the CRTouch line in the 9th bit of data. In this clock the receiver has to pull down and maintain the CRTouch line stable low during the high period of this clock pulse as an acknowledgement that the byte was received properly.

When CRTouch does not acknowledge a byte in a transaction it can indicate one of the following conditions:

- The address is trying to be accessed (either read or write) does not exist in the memory map
- The location written does not have write attributes

If the CRTouch does not acknowledge the data byte, the CRTouch line is left high during the acknowledge clock bit and the master has to generate a STOP or repeat START condition.

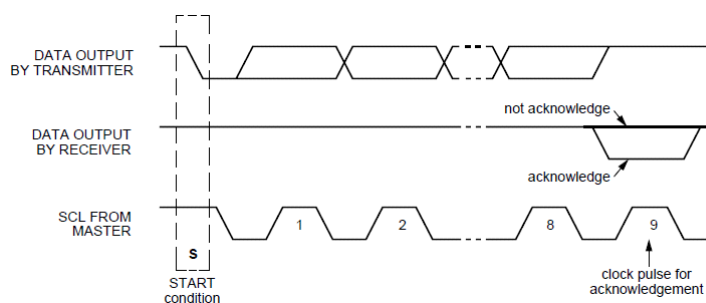


Figure 19. I2C Acknowledge

3.1.5 CRTouch I2C slave address

The CRTouch has a 7-bit long slave address. The eight bit following the slave address is the R/W bit used to indicate if the transaction is going to be a Read or Write transaction (low indicates a write command).

The I2C address has a configurable bit through the AddrSel signal. When connected to ground, bit 1 of the I2C address will be 0 and 1 when connected to V_{DD} . The resulting two 7 bit addresses possible are: 0x49 and 0x4B.

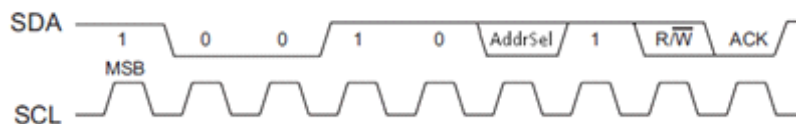


Figure 20. I2C Slave Address

3.1.6 Message format for Writing CRTouch

A write sequence comprises the transmission of the CRTouch slave address with a value of 0 for the R/W bit followed by two bytes of information. The first byte of information is the memory map address byte and the second byte is the first data byte to be written.

The memory map section of this document details the address of each register, its read and write permissions and the auto-increment address in case more than 1 data byte is written. Any byte received after the address byte is taken as data bytes and is written in the location where the internal memory map logic points at that moment. A Not Acknowledge may be generated if the location written does not exist or does not have write permissions.

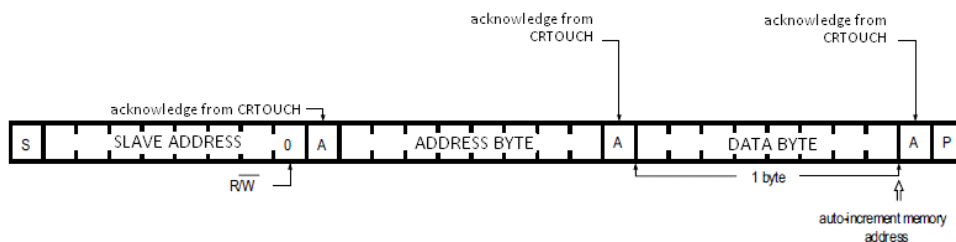


Figure 21. I2C Write sequence

3.2 UART

The CRTouch device can also send and receive data through a UART communication. Default configuration is 115200 bps, 8 data bits, odd parity and one stop bit. The only configurable parameter is the baud rate through the auto-detection feature. All the other settings are fixed.

To synchronize start and end of transactions with a host device, UART communication uses a start and end of frame reserved characters. All the data within the data payload will be sent in unpacked BCD (that is a value of 0 x 8C will be sent in two bytes, 0 x 08 and 0 x 0C) to avoid overlapping with the start and end of frame characters.

Because there are TX and RX dedicated lines for the UART communication, for any command (read or write) there must be a response from CRTouch, either replying to a read transaction or replying a status byte (success or error) from the previous transaction.

3.2.1 UART Baudrate auto detection

The CRTouch comes with an auto detect feature that allows configuring any baudrate from 9600 bps to 115200 bps. To use this feature:

1. Baudrate auto detection signal is asserted with a LOW value.
2. Host sends three consecutive bytes with 0 x 55 values with 8-data bits, odd parity, and one stop bit at the desired baudrate to configure.
3. Finally new baudrate is configured on CRTouch.

If the requested baudrate is out of range or the values sent are not the appropriate ones to calculate a valid baudrate the last valid value stored on the memory map is used and a Baudrate error will be indicated in the Status Error register.

3.2.2 UART communication protocol

The protocol uses the following format:

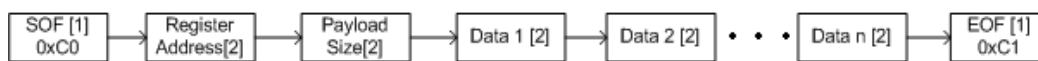


Figure 22. UART protocol format

Start of Frame — A specific byte that indicates the start of a communication between a host and CRTouch. Data byte value 0 x C0 is used for this purpose.

Register Address — Includes information if there is a write or read request from the MCU host to CRTouch, and data record address from the CRTouch memory map. Data record address is 7-bits width, from Bit 6 to Bit 0 and write/read transaction is located on [B7]. B7 LOW Indicates a Read transaction.

Payload Size — Information about quantity of bytes to be read or written is included on this field, this size does not include start of frame, register address, nor end of frame.

Data bytes — Write or Read information from the the memory map. The numbers of bytes to be read or written specified in the payload size define how many bytes each frame has. Section 4.1, “Device memory map” includes a description of the registers address and the next address to be written or read in case of a sequential read/write operation.

End of Frame (EOF) — EOF indicates that the current communication has been finished. If the data frame transmitted from the host MCU to the CRTouch does not include an EOF (0 x C1), the information sent from the Host to CRTouch does not have any effect. When processing data through UART interface the command is executed upon the reception of an EOF.

Starting on the data record address byte to the last data byte to be transmitted or received by the host MCU, each data byte is divided in MSB nibble and LSB nibble where the valid range written goes from 0 x 00 to 0 x 0F.

3.2.3 Registers Read through UART

To read any CRTouch register using the UART interface, the communication must start with a SOF followed by a register address with the most significant bit value of ‘0’ and the amount of bytes that the host wishes to read followed by an EOF.

Upon reception of a read command, CRTouch will reply using the same UART communication protocol (SOF, Register Address, Payload Size, Data Payload, and EOF) with the data from the registers read.

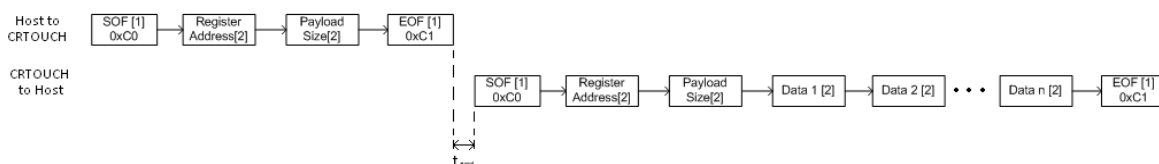


Figure 23. Register read through UART communication

Table 6. UART communication responses to a write command

Byte Value	Information
0xC2	Positive Acknowledge. The last command data was valid and has been properly written into CRTouch.
0xE0	Sampling rate out of range. A value between 5 and 100 (ms) is expected.
0xE1	Invalid write transaction. Register written does not have write attributes
0xE2	Data size out of range. A value between 1 and test sent in the write command
0xE3	Register Address out of range. See memory map section for more information
0xE5	Parity Error was generated. Parity is odd parity for each byte.

3.2.4 Registers Write through UART

To write one to n CRTouch registers, the communication must start with a SOF, followed by a register address with the most significant bit value of ‘1’ indicating the amount of registers to be written, followed by the data bytes and ending with an EOF. The CRTouch will reply either with an acknowledge byte or an error code.

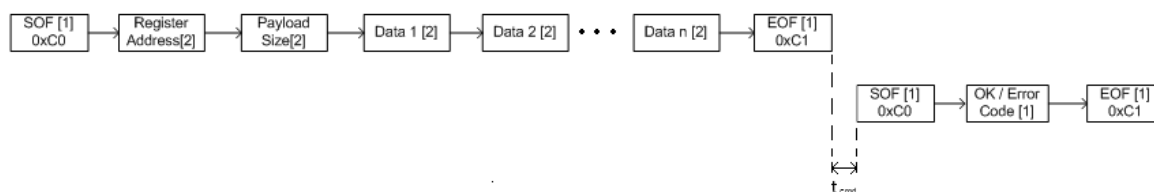


Figure 24. Register write through UART communication

The following table shows a list of possible responses to a write commands from a host. Response to any write command is the only communication where the communication protocol is not strictly followed to reduce the amount of traffic generated for a simple acknowledgement.

Table 7. UART communication responses to a write command

Byte Value	Information
0xC2	Positive Acknowledge. The last command data was valid and has been properly written into CRTouch.
0xE0	Sampling rate out of range. A value between 5 and 100 (ms) is expected.
0xE1	Invalid write transaction. Register written does not have write attributes
0xE2	Data size out of range. A value between 1 and test sent in write command
0xE3	Register Address out of range. See memory map section for more information
0xE5	Parity Error was generated. Parity is odd parity for each byte.

4 Memory Map and Registers Description

The CRTouch product has status and configuration registers for the resistive touchscreen driver and the capacitive keys support. All the status registers are read-only registers. The configuration registers have read and write attributes. All configuration registers are stored in non-volatile memory when changed, the device therefore does not require reconfiguration after power loss or reset. Only specific bits in certain registers are not restored and this is indicated in the corresponding bit description.

When writing a configuration value into a register, it may take one sampling period, resistive or capacitive, for it to take effect and to be read.

4.1 Device memory map

The CRTouch memory map is designed to allow a consecutive bytes reading. Each register has a value for its incremental address, which is the value that the internal read address pointer holds after reading that specific location. For example, if the X coordinate is read, the initial transaction starts with address 0x03 and automatically auto-increment to 0x04, 0x05, and 0x06. When the pressure is disabled, after reading the Y coordinate LSB in address 0x06, the internal address pointer returns to value 0x03 to allow reading again of X and Y coordinates without further write operations.

Table 8. Resistive touch sense status register map

Name	Register address	Incremental Address	Default Value	Valid Range	Comment
Resistive Touch Error Register	0x00	0x01	0x00	—	Used to report Serial Protocol communication errors
Resistive Touch Status Register 1	0x01	0x02	0x00	—	Register used to report general information
Resistive Touch Status Register 2	0x02	0x03	0x00	—	Register used to report general information
X coordinate MSB	0x03	0x04	0x00	0x00 – 0x1F	X coordinate MSB
X coordinate LSB	0x04	0x05	0x00	0x00 – 0xFF	X coordinate LSB
Y coordinate MSB	0x05	0x06	0x00	0x00 – 0x1F	Y coordinate MSB
Y coordinate LSB	0x06	0x03 ¹ 0x07 ²	0x00	0x00 — 0xFF	Y coordinate LSB
Pressure value MSB	0x07	0x08	0x00	0x00 — 0xFF	Pressure value MSB
Pressure value LSB	0x08	0x03	0x00	0x00 — 0xFF	Pressure value LSB
Resistive Touch FIFO Status	0x09	0x0A	0x00	—	FIFO Status information
FIFO X coordinate MSB	0x0A	0x0B	0x00	0x00 — 0x1F	FIFO X coordinate MSB
FIFO X coordinate LSB	0x0B	0x0C	0x00	0x00 — 0xFF	FIFO X coordinate LSB
FIFO Y coordinate MSB	0x0C	0x0D	0x00	0x00 — 0x1F	FIFO Y coordinate MSB
FIFO Y coordinate LSB	0x0D	0x0A ¹ 0x0E ²	0x00	0x00 — 0xFF	FIFO Y coordinate LSB
FIFO Pressure value coordinate MSB	0x0E	0x0F	0x00	0x00 — 0xFF	FIFO Pressure value coordinate MSB

Table 8. Resistive touch sense status register map (continued)

Name	Register address	Incremental Address	Default Value	Valid Range	Comment
FIFO Pressure value coordinate LSB	0x0F	0x10	0x00	0x00 — 0xFF	FIFO Pressure value coordinate LSB
UART baudrate MSB	0x10	0x11	0x01	0x00 — 0x01	UART baud rate MSB byte
UART baudrate MID	0x11	0x12	0xC2	0x00 — 0xFF	UART baud rate MID byte
UART baudrate LSB	0x12	0x13	0x00	0x00 — 0xFF	UART baud rate LSB byte
Device Identifier Register	0x13	0x14	0x12	—	Identifies mask set of the device. Increments with versions of the device.
Slide displacement	0x14	0x15	0x00	0x00 — 0xFF	Reports how many steps the user displaced since the initial touch
Rotate angle	0x15	0x16	0x00	0x00 — 0xFF	Reports the total angle of the rotate motion since the initial touch
Zoom size	0x16	0x20	0x00	0x00 — 0xFF	Reports how much zoom has been exercised by the user

1.Incremental address when pressure detection is disabled.

2.Incremental address when pressure detection is enabled.

Table 9. Capacitive Touch Status registers

Name	Register Address	Incremental Address	Default Value	Valid Range	Comment
Electrode Status	0x20	0x21	0x00	0x00 — 0x0F	Each bit represents the current status of an electrode.
Capacitive Touch Faults	0x21	0x22	0x00	0x00 to 0x01	Shows the faults generated by the system
Electrode 0 baseline MSB	0x22	0x23	0x0000	0x0000 – 0x07FF	Electrode base capacitance. This value may adjust to changes due to electrical and environmental noise.
Electrode 0 baseline LSB	0x23	0x24			
Electrode 1 baseline MSB	0x24	0x25	0x0000	0x0000 – 0x07FF	Electrode base capacitance. This value may adjust to changes due to electrical and environmental noise.
Electrode 1 baseline LSB	0x25	0x26			
Electrode 2 baseline MSB	0x26	0x27	0x0000	0x0000 – 0x07FF	Electrode base capacitance. This value may adjust to changes due to electrical and environmental noise.
Electrode 2 baseline LSB	0x27	0x28			

Table 9. Capacitive Touch Status registers

Name	Register Address	Incremental Address	Default Value	Valid Range	Comment
Electrode3 baseline MSB	0x28	0x29	0x0000	0x0000 – 0x07FF	Electrode base capacitance. This value may adjust to changes due to electrical and environmental noise.
Electrode3 baseline LSB	0x29	0x2A			
Electrode0 instant delta	0x2A	0x2B	0x00	-128 — 127	Instant capacitance variation with respect to its baseline
Electrode1 instant delta	0x2B	0x2C	0x00	-128 — 127	Instant capacitance variation with respect to its baseline
Electrode2 instant delta	0x2C	0x2D	0x00	-128 — 127	Instant capacitance variation with respect to its baseline
Electrode3 instant delta	0x2D	0x2E	0x00	-128 — 127	Instant capacitance variation with respect to its baseline
Slider and Rotary Dynamic Status	0x2E	0x2F	0x00	—	Displays the movement, direction, and displacement information
Slider and Rotary Static Status	0x2F	0x20	0x00	—	Displays the touch and absolute position information. Holds the invalid position status flag
Capacitive Electrodes FIFO	0x30	0x30	0x00	—	Register window for keypad FIFO. Consecutive reads to this register return successive FIFO elements.

Table 10. Resistive Touch Configuration register map

Name	Register address	Incremental Address	Default Value	Valid Range	Comment
Resistive Touch System Configuration	0x40	0x41	0x00	0x00 — 0xFF	General CRTouch configuration register
Resistive Touch Trigger events	0x41	0x42	0x00	0x00 — 0xFF	Register used to select what event shall assert port pin event signal
Resistive Touch FIFO Setup	0x42	0x43	0x00	0x00 — 0x1F	FIFO enabler and watermark are configured in this register
Sampling rate X and Y coordinates (msec)	0x43	0x44	0x05	0x05 — 0x64	Determines the resistive touchscreen sampling rate in milliseconds
X Settling Time MSB	0x44	0x45	0x0064	0x000E – 0x012C	X Settling time high byte
X Settling Time LSB	0x45	0x46			X Settling time low byte
Y Settling Time MSB	0x46	0x47	0x0064	0x000E – 0x012C	Y Settling time high byte
Y Settling Time LSB	0x47	0x48			Y Settling time low byte
Z Settling Time MSB	0x48	0x49	0x0064	0x000E – 0x012C	Z Settling time high byte
Z Settling Time LSB	0x49	0x4A			Z Settling time low byte

Table 10. Resistive Touch Configuration register map (continued)

Name	Register address	Incremental Address	Default Value	Valid Range	Comment
Display Horizontal resolution MSB	0x4A	0x4B	0x1000	0x0030 – 0x2000	MSB of the display resolution on the X axis
Display Horizontal resolution LSB	0x4B	0x4C			LSB of the display resolution on the X axis
Display Vertical resolution MSB	0x4C	0x4D	0x1000 0x1000	0x0030 – 0x2000	MSB of the display resolution on the Y axis
Display Vertical resolution LSB	0x4D	0x4E			LSB of the display resolution on the Y axis
Resistive Touch Slide steps	0x4E	0x4F	0x0A	0x01 — 0xFF	Defines how many slides per axis may be detected

Table 11. Calibration Values registers map

Name	Register Address	Incremental Address	Default Value	Valid Range	Comment
X Calibration Value 1 MSB	0x4F	0x50	0x4000	0x0000 – 0xFFFF	Manual calibration values. Writing to these registers calibrates the device without the need for pressing the calibration points on the touchscreen.
X Calibration Value 1 LSB	0x50	0x51			
X Calibration Value 2 MSB	0x51	0x52	0x0	0x0000 – 0xFFFF	
X Calibration Value 2 LSB	0x52	0x53			
X Calibration Value 3 MSB	0x53	0x54	0x0	0x0000 – 0xFFFF	
X Calibration Value 3 LSB	0x54	0x55			
Y Calibration Value 1 MSB	0x55	0x56	0x0	0x0000 – 0xFFFF	
Y Calibration Value 1 LSB	0x56	0x57			
Y Calibration Value 2 MSB	0x57	0x58	0x4000	0x0000 – 0xFFFF	
Y Calibration Value 2 LSB	0x58	0x59			
Y Calibration Value 3 MSB	0x59	0x5A	0x0	0x0000 – 0xFFFF	
Y Calibration Value 3 LSB	0x5A	0x5B			
X Calibration Constant MSB	0xB	0x5C	0x0	0x0000 – 0xFFFF	
X Calibration Constant LSB	0x5C	0x5D			
Y Calibration Constant MSB	0x5D	0x5E	0x0	0x0000 – 0xFFFF	
Y Calibration Constant LSB	0x5E	0x60			

Table 12. Capacitive Touch Configuration registers map

Name	Register address	Incremental Address	Default Value	Valid Range	Comment
Capacitive System Configuration	0x60	0x61	0x20	—	Main configuration of the capacitive touch system
DC Tracker Rate	0x61	0x62	0x0A	0x00 – 0xFF	Determines how often the recalibration function occurs.
Capacitive Touch ResponseTime	0x62	0x63	0x04	0x00 – 0x20	Configures the number of scans necessary to determine if a key is pressed
StuckKeyTimeout	0x63	0x64	0x64	0x00 — 0xFF	Configures the number of scans to detect a key stuck
Electrode0 Sensitivity	0x64	0x65	0x40	0x02 – 0x7F	Represents the capacitance threshold for electrode 0 to be detected as touched
Electrode1 Sensitivity	0x65	0x66	0x40	0x02 – 0x7F	Represents the capacitance threshold for electrode 1 to be detected as touched
Electrode2 Sensitivity	0x66	0x67	0x40	0x02 – 0x7F	Represents the capacitance threshold for electrode 2 to be detected as touched
Electrode3 Sensitivity	0x67	0x68	0x40	0x02 – 0x7F	Represents the capacitance threshold for electrode 3 to be detected as touched
Electrodes Enablers	0x68	0x69	0x0F	—	Each bit represents the enabler of an electrode. If a bit is 0, then the corresponding electrode will not be scanned
Capacitive touch Low power scan period	0x69	0x6A	0x0F	0x00 – 0x0F	Represents the value of the scan period in low power mode
Capacitive Touch Low power electrode	0x6A	0x6B	0x00	0x00 – 0x03	This register represents the number of the electrode scanned in low power mode
Low power electrode sensitivity	0x6B	0x6C	0x7F	0x00 – 0x7F	Threshold for the low power electrode while in shutdown mode
Capacitive Resolution	0x6C	0x6D	0x0A	0x08 – 0x0B	Determines the resolution in bits of the capacitive samples

Table 12. Capacitive Touch Configuration registers map

Name	Register address	Incremental Address	Default Value	Valid Range	Comment
Capacitive Touch Events	0x6D	0x6E	0x01	0x00 – 0xFF	Configures the events that reported by the capacitive controller
Capacitive Touch AutoRepeatRate	0x6E	0x6F	0xFF	0x00 – 0xFF	Configures the rate at which keys will be reported when kept pressed
Capacitive Touch AutoRepeatStart	0x6F	0x70	0xFF	0x00 – 0xFF	Configures the time between a touch and an auto-repeat event when the key is kept pressed
Capacitive MaxTouches	0x70	0x71	0x00	0x00 – 0x03	Configures the maximum number of keys that can be pressed at once

4.2 Registers description

4.2.1 Resistive Touch Status registers

All the Resistive touch status registers have read only attributes. Attempting to write any of these registers return in an invalid write response from CRTouch.

4.2.1.1 Resistive Touch Error Register

This register reports several possible failures in the system. All bits are cleared after a register read

Bit	7	6	5	4	3	2	1	0
Field	BRE	CE	SE	WEF	DSE	AE	EOFE	PE

Field	Description
7 BRE	Baudrate error BRE is set when the baud-rate auto detect process can not determine the communication baudrate.
6 CE	Calibration error flag Set when the calibration process can not calculate the values needed for system calibration. This typically occurs when the points touched do not match with calibration requirements.
5 SE	Sampling error flag Set when trying to write the resistive touch sampling rate register with a value less than 5 or more than 100.
4 WEF	Write Error Flag WEF is set when trying to write an address that has read-only attributes.

Field	Description
3 DSE	Data Size Error DSE is set when Number of data = 0 or Number of data > 101.
2 AE	Address Error AE is set when the requested address is outside the address memory map range or within an un-implemented section of the memory map.
1 EOFE	End of Frame Error EOF error flag is set to 1 when end of frame is not received after the communication timeout expires.
0 PE	Parity Error PE error flag is set to 1 when one or several bytes from the received frame does not have odd parity properly configured.

4.2.1.2 Resistive Touch Status register 1

This register reports different events that may be detected in the system, and latches some bits to ensure that the event does not get lost if not read immediately. Latched bits clear after a register read. The TouchPending pin is also set after this register is read.

Bit	7	6	5	4	3	2	1	0
Field	RTST	RTS2T	RTSZ	RTSR	RTSS	RTSF	CTE	RTSRDY

Field	Description
7 RTST	Resistive Touch Screen Touched is set after any touch event in a resistive screen is connected to CRTouch 0 Resistive touch screen not currently touched 1 Resistive touch screen currently touched
6 RTS2T	Resistive touch screen Two Touch detection is set after the screen has a two touch detection event. This bit is automatically cleared when a two touch condition is no longer detected on the screen. 0 Two touch event not currently detected 1 Two touch currently detected.
5 RTSZ	Resistive Touch Screen Zoom indicates when a zoom gesture has been detected. 0 Zoom gesture not detected 1 Zoom gesture pending for reading
4 RTSR	Resistive Touch Screen Rotate indicates when a rotate gesture has been detected. 0 Rotate gesture not detected 1 Rotate gesture pending for reading
3 RTSS	Resistive Touch Screen Slide indicates when a slide gesture has been detected. 0 Slide gesture not pending for reading 1 Slide gesture pending for reading
2 RTSF	Resistive touch screen FIFO data is set when the FIFO count reaches the watermark value or when the FIFO is filled. 0 FIFO data full and watermark reached 1 FIFO data not full and watermark not reached
1 CTE	Capacitive touch event is set after one of the configured capacitive events is detected. 0 Capacitive touch event not pending for reading 1 Capacitive touch event pending for reading
0 RTSRDY	Resistive Touch Sample ready is set after a resistive touch screen connected to CRTouch is pressed and the device finished all the data processing to determine X and Y coordinates. 0 Resistive touch sample not pending for reading 1 Resistive touch sample pending for reading

4.2.1.3 Resistive Touch Status Register 2

Bit	7	6	5	4	3	2	1	0
Field	RTSCAL	Reserved	RTSZD	RTSRD	RTSSD		RTSD	

Field	Description		
7 RTSCAL	Resistive Touch screen calibrated is set after the screen has been properly calibrated. After initial calibration the result is stored in the internal non-volatile memory and is recovered after automatically reset. 0 Resistive touch screen not calibrated 1 Resistive touch screen calibrated		
6 Reserved	This bit is reserved		
5 RTSZD	Zoom direction 0 Zoom in 1 Zoom out		
4 RTSRD	Resistive Touch Screen Rotate Direction. 0 Clock wise direction 1 Counter clock wise direction		
3-2 RTSSD	Resistive Touch Screen Slide Direction indicates the direction of the slide gesture after its detection.		
	0	0	Horizontal positive direction
	0	1	Horizontal negative direction
	1	0	Vertical positive direction
1-0 RTSTD	Resistive Touch Screen type detected. After reset, the system scans for the type of resistive touch screen connected to the system. The RTSD bits indicate the type of screen detected.		
	0	0	Resistive touch not detected
	0	1	4 wires resistive touch screen detected
	1	0	5 wires resistive touch screen detected
	1	1	Reserved

4.2.1.4 X coordinate

Bit	15	14	13	12	11	10	9	8	7	6	5	4	3	2	1	0
Field	XMSB								XLSB							

Signal	Description
15-8 XMSB	Most significant Byte for X coordinate
7-0 XLSB	Least significant Byte for X coordinate

4.2.1.5 Y coordinate

Bit	15	14	13	12	11	10	9	8	7	6	5	4	3	2	1	0
Field	YMSB								YLSB							

Signal	Description
15-8 YMSB	Most significant Byte for Y coordinate
7-0 YLSB	Least significant Byte for Y coordinate

4.2.1.6 Pressure value

Bit	15	14	13	12	11	10	9	8	7	6	5	4	3	2	1	0
Field	PRESSMSB								PRESSLSB							

Signal	Description
15-8 PRESSMSB	Most significant Byte for Pressure detected when touching the screen
7-0 PRESSLSB	Least significant Byte for Pressure detected when touching the screen

4.2.1.7 Resistive Touch FIFO status

Bit	7	6	5	4	3	2	1	0
Field	Reserved	Reserved	FIFOWMRKF	FIFOWMRKF	FIFOCNT			

Signal	Description
7 Reserved	Reserved
6 Reserved	Reserved
5 FIFOWMRKF	FIFO Watermark Flag indicates when the FIFO counter is greater than or equal to the value configured in the WaterMark bits of the FIFO Configuration register.
4-0 FIFOCNT	FIFO sample counter, default value 00000. (00001 to 11111 indicates 1 to 31 samples stored in FIFO)

4.2.1.8 FIFO X coordinate

Bit	15	14	13	12	11	10	9	8	7	6	5	4	3	2	1	0
Field	FIFOXMSB								FIFOXLSB							

Signal	Description
15-8 FIFOXMSB	Most significant Byte for X coordinate stored in the FIFO
7-0 FIFOXLSB	Least significant Byte for X coordinate stored in the FIFO

4.2.1.9 FIFO Y coordinate

Bit	15	14	13	12	11	10	9	8	7	6	5	4	3	2	1	0
Field	FIFOYMSB								FIFOYLSB							

Signal	Description
15-8 FIFOYMSB	Most significant Byte for Y coordinate stored in the FIFO
7-0 FIFOYLSB	Least significant Byte for Y coordinate stored in the FIFO

4.2.1.10 FIFO Pressure Value

Bit	15	14	13	12	11	10	9	8	7	6	5	4	3	2	1	0
Field	FIFOPMSB								FIFOPLSB							

Signal	Description
15-8 FIFOPMSB	Most significant Byte for Pressure stored in the FIFO
7-0 FIFOPLSB	Least significant Byte for Pressure stored in the FIFO

4.2.1.11 UART baudrate MSB (read only)

Bit	23	22	21	20	19	18	17	16	15	14	13	12	11	10	9	8	7	6	5	4	3	2	1	0
Field	BRH						BRM						BRL											

Signal	Description
23-16 FIFOYMSB	Most significant Byte for UART baudrate used for the system configuration.
15-8 FIFOYLSB	Intermediate Byte for UART baudrate used for the system configuration.
7-0 FIFOYLSB	Least significant Byte for UART baudrate used for the system configuration.

4.2.1.12 Device identifier register (read only)

Bit	7	6	5	4	3	2	1	0
Field	DEVICEID							

Signal	Description
7-0 DEVICEID	Device ID stores the product version information. This register is factory programmed and its usage is for traceability purposes.

4.2.1.13 Slide displacement

Bit	7	6	5	4	3	2	1	0
Field	SLIDEDATA							

Signal	Description
7-0 SLIDEDATA	Reports how many steps the user has displaced after the initial touch. This is useful to keep track of the motion if at lower sampling rates, more than one step was displaced in a sample period.

4.2.1.14 Rotate angle

Bit	7	6	5	4	3	2	1	0
Field	ROTATEDATA							

Signal	Description
7-0 ROTATEDATA	Reports the total angle of the rotate motion after the initial touch.

4.2.1.15 Zoom size (read only)

Bit	7	6	5	4	3	2	1	0
Field	ZOOMSIZE							

Signal	Description
7-0 ZOOMSIZE	Reports how much zoom has been exercised by the user.

4.2.2 Capacitive Touch Sensing Status registers

All the Capacitive Touch Sensing Status registers have read only attributes. Attempting to write any of these registers will return an invalid write response from CRTouch.

4.2.2.1 Capacitive Electrodes Status register

Bit	7	6	5	4	3	2	1	0
Field	Reserved				E3	E2	E1	E0

Signal	Description
7-4 Reserved	Reserved
3-0 E3-E0	E3 – E0 represents the status of the corresponding electrode. A bit set to 1 indicates that the corresponding electrode is detecting a touch event.

4.2.2.2 Capacitive Touch Faults register

Bit	7	6	5	4	3	2	1	0
Field	Reserved							SE

Signal	Description
7-1 Reserved	Reserved
0 Shortened Electrode	Indicates if one of the capacitive electrodes cannot be measured, typically due to a short to V _{CC} or ground. 1 Timeout fault detected 0 No timeout fault detected

4.2.2.3 Electrodes Baselines registers

Bit	15	14	13	12	11	10	9	8	7	6	5	4	3	2	1	0
Field	ExBASELINEMSB								ExBASELINELSB							

Signal	Description
15-8 Electrode Baseline MSB	Most significant Byte for Electrodes 0 to 3 baseline. The baseline value is compared to the instant value to determine if the electrode is touched or not.
7-0 Electrode Baseline LSB	Least significant byte for electrodes 0 to 3 baseline. The baseline value is compared to the instant value to determine if the electrode is touched or not.

4.2.2.4 Electrodes instant Delta registers

Bit	7	6	5	4	3	2	1	0
Field	ExINSTANTDELTA							

Signal	Description
7-0 Electrode Instant Delta	Electrode 3 to Electrode 0 instant capacitance variation with respect to its baseline. This register is in signed format, ranging from -128 to 127. If the instant value is greater than these values, the Delta value is saturated.

4.2.2.5 Slider and rotary dynamic status

Bit	7	6	5	4	3	2	1	0
Field	CTDSMOV	CTDSDIR	Reserved		CTDSVAL			

Signal	Description
7 CTDSMOV	Capacitive Touch Dynamic Status Movement indicates if movement is being detected at the moment of reading. 1 Indicates that there is movement detected
6 CTDSDIR	Capacitive Touch Dynamic Status Direction is used to determine the direction of movement. 1 indicates an incremental movement. This bit remains with its last value even if movement has stop and is no longer detected.
5-4 Reserved	Reserved
3-0 CTDSVAL	Capacitive Touch Dynamic Status value indicates the difference in positions from the last status to the new one. This indicates how many positions have been advanced in the current direction of movement.

4.2.2.6 Slider and rotary static status

Bit	7	6	5	4	3	2	1	0
Field	CTSSTOUCH	CTSSINV	Reserved	CTDSVAL				

Signal	Description
7 CTSSTOUCH	Capacitive Touch Static Status Touch indicates if a touch in the control is being detected at the moment of reading.
6 CTSSINV	Capacitive Touch Static Status Invalid flag Indicates if an invalid combination of touched electrodes is being detected. An invalid combination is detected when two or more non adjacent electrodes are detected as touched, for example electrodes 0 and 2.
5- Reserved	Reserved
4-0 CTDSVAL	Capacitive Touch Static Status Value indicates the absolute position within the control that is actuated.

NOTE

For rotary and sliders, the number of positions is greater than the number of electrodes. The device reports different positions when more than one electrode is being touched. For more details, review [Section 2.2.3, “Rotary and slider control”](#)

4.2.2.7 Capacitive electrodes FIFO (read only)

When electrodes are configured as keypad, capacitive electrodes FIFO keeps status information from capacitive electrode 0 to 3.

Bit	7	6	5	4	3	2	1	0
Field	CTFIFOTOUCH	Reserved	CTFIFOKEY					

Signal	Description
7 CTFIFOTOUCH	Capacitive Touch FIFO Touch indicates if the event was a release or a touch event. 1 Indicates the key was released
5- Reserved	Reserved
5-0 CTFIFOKEY	Capacitive Touch FIFO Key determines the key on which the event has occurred

4.2.3 Resistive Touch Configuration registers

All the Resistive Touch Status registers have read and write attributes. Care must be taken that the written value is valid for the specific register written

4.2.3.1 Resistive and Capacitive Touch Configuration register

The Resistive and Capacitive Touch Configuration register is used to configure the different settings used as part of the resistive and capacitive scanning processes. All the configuration bits except CRTSHTDWN are non-volatile and recovered to their latest value as part of the part reset sequence.

Bit	7	6	5	4	3	2	1	0
Field	RTPRESEN	CTCNTRL		RTSLDEN	RTROTEN	RTPNCEN	CRTSLEEP	CRTSHTDWN

Field	Description		
7 RTPRESEN	Resistive touch pressure enable bit is used to enable the pressure measurement on the resistive touch screen as part of the X and Y scanning process. If FIFO is enabled, changing the value of this bit will automatically flush the FIFO to synchronize X, Y, and pressure buffers.		
6-5 CTCNTRL	Capacitive Touch Control defines the type of control used for the four capacitive electrodes that can be connected to CRTouch.		
	CTCNTRL 1	CTCNTRL 0	Configuration
	1	1	Keypad control selected
	1	0	Slider control selected
	0	1	Rotary control selected
0	0	Capacitive keys disabled	
4 RTSLDEN	Resistive Touch Slide Enable — A single touch slide can be detected if the X and Y coordinates fit in the slide gesture description. Status registers 1 and 2 are used to indicate when the slide gesture was detected and the slide direction.		
3 RTROTEN	Resistive Touch Rotate Enable — Status registers 1 and 2 are used to indicate when the Rotate gesture was detected and if it was a clock-wise or counter-clock-wise gesture.		
2 RTZMEN	Resistive Touch Zoom Enable — This bit controls if zoom motions on the touch screen are detected and reported. Status registers 1 and 2 are used to indicate when the pinch gesture is detected and if it was a zoom-in or zoom out gesture.		
1 CRTSLEEP	Capacitive Resistive Touch sleep is used to send the device into sleep mode. Section 2.3.2, “Sleep mode” has detailed information on the CRTouch behavior while in sleep mode. 1 Sleep mode enabled 0 Sleep mode disabled		
0 CRTSHTDWN	Capacitive Resistive Touch Shutdown is used to configure the CRTouch into its lowest power mode available. Section 2.3.3, “Shutdown mode” has detailed information on the CRTouch behavior when this bit is enabled. Shutdown is the only bit in the configuration register that is not restored after a reset. 1 Shutdown mode enabled 0 Shutdown mode disabled		

4.2.3.2 Resistive and Capacitive Triggers register

The Resistive and Capacitive Triggers register configures what events will assert the TOUCHPENDING pin. This can be used to signal to an external host that there is a pending activity to be read in the status registers. The Triggers register also contains a bit used by the host to send CRTouch into calibration mode—see [Section 2.1.4, “Calibration process.”](#) All bits except for the Calibration bit are non-volatile. A 1 enables the event to assert the TOUCHPENDING pin.

Memory Map and Registers Description

Bit	7	6	5	4	3	2	1	0
Field	RTREL	RTCAL	RTPINCH	RTSLD	RTROT	RTFIFOWM	CTEV	RTEV

Field	Description
7 RTREL	Resistive touch release bit is used to generate a signal when the resistive touch screen is released.
6 RTCAL	Resistive touch Calibration bit sends the CRTouch into calibration mode. After this bit is enabled, the system behavior is Section 2.1.4, "Calibration process." Writing a 0 to this bit while in a calibration process aborts the calibration. Calibration mode is finished after the calibration points have been identified or with a reset.
5 RTZOOM	Resistive Touch Pinch trigger bit configures the external event pin to be asserted when a Zoom-in or Zoom out is detected.
4 RTROT	Resistive Touch Rotate trigger bit configures the external event pin asserted when a clock-wise or counter-clock-wise rotate gesture is detected.
3 RTSLD	Resistive Touch Slide trigger bit configures the external event pin asserted when a slide gesture in any direction is detected.
2 RTFIFOWM	Resistive Touch FIFO Watermark bit is used to generate a signal after the number of samples in the FIFO is greater than or equal to the Watermark bits configuration in the FIFO setup register
1 CTEV	Capacitive Touch Event is used to generate a pending activity signal when any capacitive event is detected. Capacitive events detection is configured in the Capacitive Events register.
0 RTEV	Resistive Touch Event signals the host after each sampling period after the signals have been processed and the coordinates have been determined, as well as any resistive event.

4.2.3.3 FIFO Setup register

Any writes to this register will automatically flush the FIFO of any stored elements.

Bit	7	6	5	4	3	2	1	0
Field	Reserved			RTFIFOEN	RTFIFOWMRK			

Field	Description
7-5 Reserved	Reserved
6 RTFIFOEN	Resistive Touch FIFO Enable enables storing the resistive touch data inside the FIFO.
3-0 RTFIFOWMRK	Resistive Touch FIFO Watermark indicates the amount of samples needed to signal an event. When the amount of values stored in the FIFO is greater than or equal to the watermark configuration, the RTSF bit is set in the Status Register 1. 0 Watermark is disabled. FIFO event is signaled when the FIFO is full. 1–15 FIFO event will be signaled when the FIFO counter reaches this value.

4.2.3.4 Resistive touch sampling rate

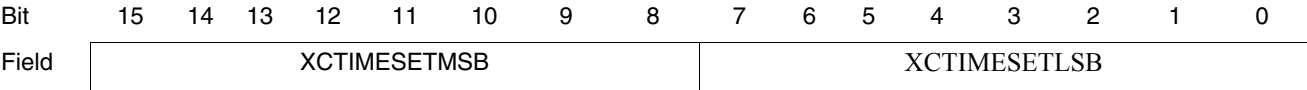
This register is used to configure the period to sample the resistive touch screen.



Signal	Description
7–0 RTSAMPLING	Value in milliseconds to indicate the scanning period. Value must be between 5 and 100 (10 points per second to 200 points per second).

4.2.3.5 X coordinate stabilization time

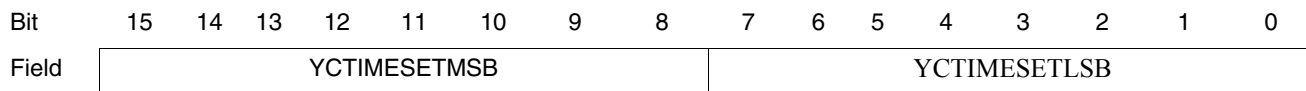
This 16-bit value holds the number needed in micro-seconds for the signals required for an X coordinate scanning to stabilize. The value is calculated automatically as part of the calibration process but can be written through serial communication to simplify factory configuration of devices.



Signal	Description
15–8 X Coordinate stabilization MSB	Most significant byte for the X coordinates stabilization delay.
7–0 X Coordinate stabilization LSB	Least significant byte for the X coordinates stabilization delay

4.2.3.6 Y coordinate stabilization time

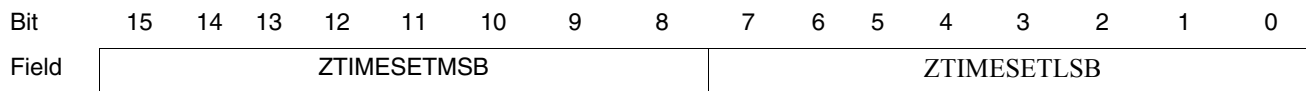
This 16-bit value holds the number needed in micro-seconds for the signals required for a Y coordinate scanning to stabilize. The value is calculated automatically as part of the calibration process but can be written through serial communication to simplify factory configuration of devices.



Signal	Description
15-8 Y Coordinate stabilization MSB	Most significant byte for the Y coordinates stabilization delay.
7-0 Y Coordinate stabilization LSB	Least significant byte for the Y coordinates stabilization delay

4.2.3.7 Z coordinate stabilization time

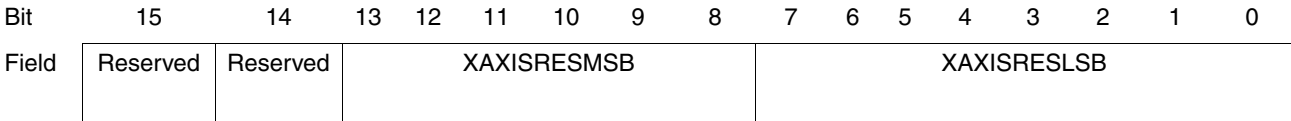
This 16-bit value holds the number needed in micro-seconds for the signals required for the pressure coordinate scanning to stabilize. The value is calculated automatically as part of the calibration process, but can be written through serial communication to simplify factory configuration of devices.



Signal	Description
15-8 Pressure stabilization MSB	Most significant byte for the two-touch signals stabilization delay.
7-0 Pressure stabilization LSB	Least significant byte for the two-touch signals stabilization delay

4.2.3.8 Display horizontal resolution

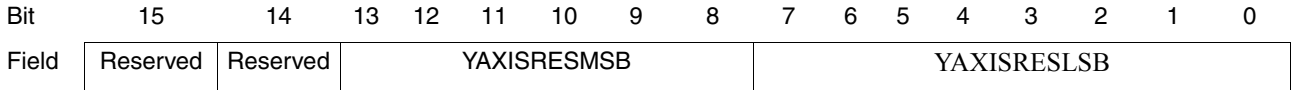
Determines the resolution for the X coordinates. It is important to configure this value properly before a calibration is executed. Values written to this register have no effect until after both horizontal and vertical resolutions have been written. Writes to these registers reset the device calibration.



Signal	Description
15–14 Reserved	Reserved
13–8 X Axis Resolution MSB	Most significant byte for the X axis resolution
7–0 X Axis Resolution LSB	Least significant byte for the X axis resolution

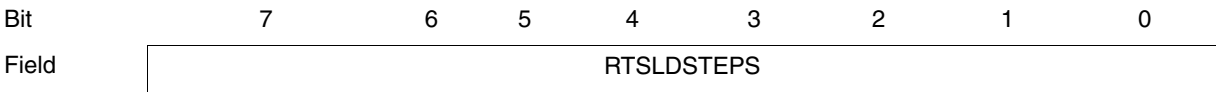
4.2.3.9 Display vertical resolution

Determines the resolution for the Y coordinates. It is important to configure this value properly before a calibration is executed. Values written to this register have no effect until after both horizontal and vertical resolutions have been written. Writes to these registers reset the device calibration.



Signal	Description
15–14 Reserved	Reserved
13–8 Y Axis Resolution MSB	Most significant byte for the Y axis resolution
7–0 Y Axis Resolution LSB	Least significant byte for the Y axis resolution

4.2.3.10 Resistive touch slide steps



Signal	Description
7-0 RTSLDSTEPS	Number of steps reported when a slide is perform side to side of the touch screen

4.2.4 Calibration Values registers

This set of registers hold the calibration coefficients for the X and Y single touch coordinates, as well as the constants for each axis required for two touch gesture calculations. Writing to these values calibrates the device without the need for touching the calibration points on the screen. All of the values must be written to calibrate the device. The Status Register 2 bit for calibration is set after a reset.

4.2.4.1 X calibration values

This set of three 16-bit values represents the calibration coefficients for the X coordinate. To obtain the X coordinate, the first value is multiplied by the X sample, the second value by the Y sample, and the third value added with the products.

Bit	15	14	13	12	11	10	9	8	7	6	5	4	3	2	1	0
Field	XCALxMSB								XCALxLSB							

Signal	Description
15-8 XCALxMSB	Most significant byte for the X coordinate calibration value.
7-0 XCALxLSB	Least significant byte for the X coordinate calibration value.

4.2.4.2 Y calibration values

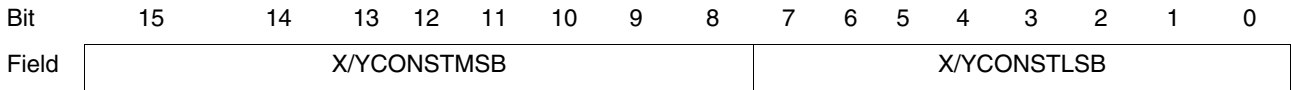
This set of three 16-bit values represents the calibration coefficients for the Y coordinate. To obtain the Y coordinate, the first value is multiplied by the X sample, the second value by the Y sample and the third value added with the products.

Bit	15	14	13	12	11	10	9	8	7	6	5	4	3	2	1	0
Field	XCALxMSB								XCALxLSB							

Signal	Description
15-8 YCALxMSB	Most significant byte for the Y coordinate calibration value.
7-0 YCALxLSB	Least significant byte for the Y coordinate calibration value.

4.2.4.3 X and Y two touch constant values

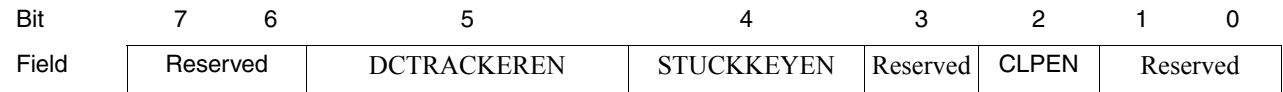
These values are used for calculations on two touch gestures.



Signal	Description
15–8 X/YCONSTMSB	Most significant byte for the X/Y two touch constant calibration value.
7–0 X/YCONSTLSB	Least significant byte for the X/Y two touch constant calibration value.

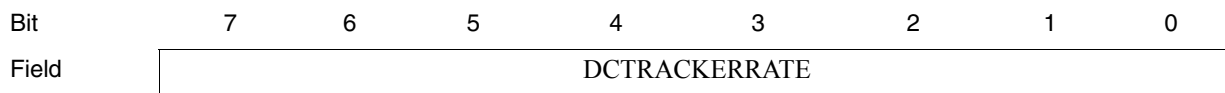
4.2.5 TSS Configuration registers

4.2.5.1 Capacitive system configuration



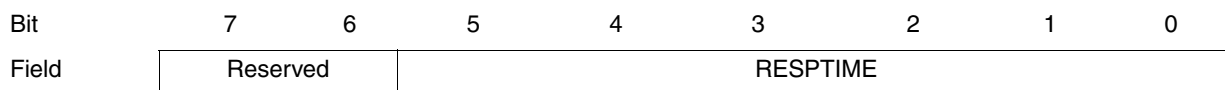
Signal	Description
7–6 Reserved	Reserved
5 DTRACKEREN	DC Tracker Enable — This bit enables the DC tracker to continuously adjust the electrode capacitance baseline. The periodicity at which the baseline is adjusted is determined by the DC Tracker Rate.
4 STUCKKEYEN	Stuck Key Enable — This bit enables the baseline recalibration of a touched electrode after a period of time. If the electrode remains touched for as long as the Stuck Key Timeout register defines, then the electrode baseline is recalculated and as a consequence the electrode is released.
3 Reserved	Reserved
2 CLPEN	Capacitive Low Power Enable — This bit enables one of the four electrodes to wake the system from Shutdown mode. When this bit is enabled, no electrodes are scanned while in Run mode. This bit should be enabled only prior to entering into Shutdown mode. This bit is not restored and will always be 0 after a reset.
1–0 Reserved	Reserved

4.2.5.2 DC Tracker Rate



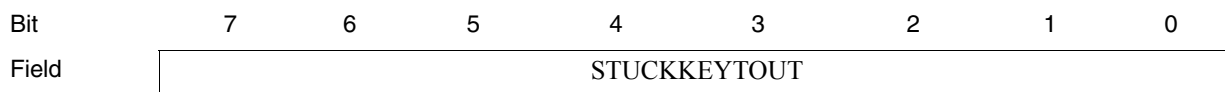
Signal	Description
7–0 DCTRACKERRATE	Determines how often the recalibration function occurs. This number represents the number of capacitive samples required before recalibration. If this register is set to 0, the DC Tracker feature is disabled. 0 DC Tracker feature disabled 1–255 DC Tracker executed every n sampling period

4.2.5.3 Response Time register



Signal	Description
7–6 Reserved	Reserved
5–0 RESPTIME	Determines the number of measurements required to detect a status change in any electrode. This value represents the number of capacitive samples required for an electrode status change detection. 1–32 n measurements to be used

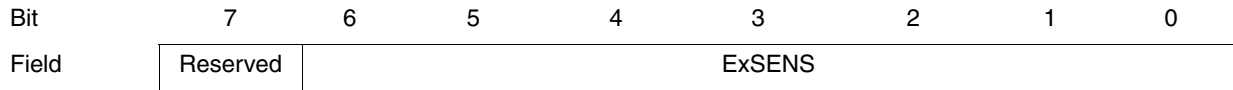
4.2.5.4 Stuck Key Timeout register



Signal	Description
7–0 STUCKKEYTOUT	Determines how many milli-seconds must an electrode be detected as touched before recalibrating that electrode and then detect it as untouched. If this value is set to 0, the stuck key feature is disabled. 0 Stuck key feature disabled 1–255 Electrode recalibrated after n task executions

4.2.5.5 Electrodes Sensitivity

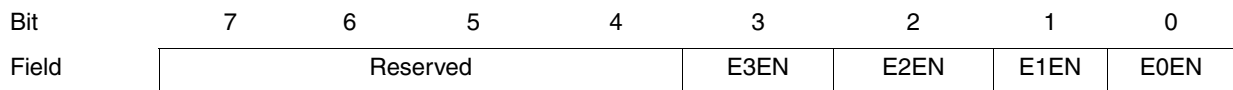
This set of registers, one per electrode, holds the sensitivity value of each electrode. Sensitivity value is an 8-bit value that represents the minimum difference between an instant reading versus the baseline required to indicate a touch.



Signal	Description
7 Reserved	
6-0 ExSENS	Represents the capacitance threshold for an electrode to be detected as touched, relative to the baseline value of that electrode. 2-127 Electrode x (0 to 3) sensitivity

4.2.5.6 Electrodes enablers

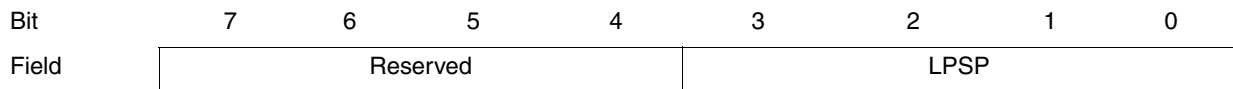
This register holds the information of which electrode is enabled. Each bit represents an electrode



Signal	Description
3-0 ExEN	1 – Electrode x Enabled 0 – Electrode x Disabled

4.2.5.7 Low Power Scan Period register

Represents the value of the scan period in the low power mode, this range does not represent a linear (ms) scan interval.



Signal	Description
7–4 Reserved	Reserved
LPSP	<p>Determines scan period in low power mode. Only selection from the list of predefined values is allowed.</p> <p>0000 — 1 ms scan interval 0001 — 5 ms scan interval 0010 — 10 ms scan interval 0011 — 15 ms scan interval 0100 — 20 ms scan interval 0101 — 30 ms scan interval 0110 — 40 ms scan interval 0111 — 50 ms scan interval 1000 — 75 ms scan interval 1001 — 100 ms scan interval 1010 — 125 ms scan interval 1011 — 150 ms scan interval 1100 — 200 ms scan interval 1101 — 300 ms scan interval 1110 — 400 ms scan interval 1111 — 500 ms scan interval</p>

4.2.5.8 Low Power Electrodes register

This register represents the number of the electrodes scanned in the low power mode.

Bit	7	6	5	4	3	2	1	0
Field	Reserved						LPEL	

Signal	Description
7–2 Reserved	Reserved
1–0 LPEL	Low Power Electrode — This value selects which of the four electrodes, from E0 – E3, will be scanned when the system is in Shutdown mode and the CLPEN bit is enabled in the Capacitive System Configuration register.

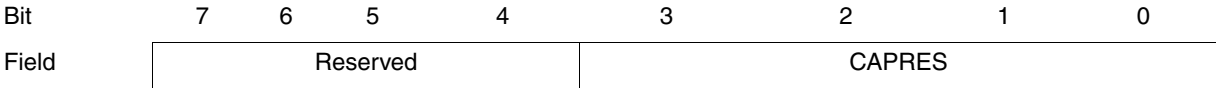
4.2.5.9 Low Power Electrode Sensitivity register

Bit	7	6	5	4	3	2	1	0
Field	Reserved	LPSSENS						

Signal	Description
7	Reserved
6-0 LPSENS	Determines the sensibility value for the low power electrode.

4.2.5.10 Capacitive Resolution register

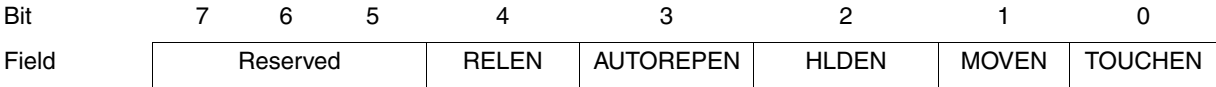
This register determines the resolution of the capacitive samples. Increasing the capacitive resolution helps improving the signal to noise ratio when using thick dielectrics. A reset is needed for this value to take effect.



Signal	Description
7-4 Reserved	Reserved
3-0 CAPRES	Resolution of capacitive samples. 0-7 Reserved 8-11 Resolution value 12-15 Reserved

4.2.5.11 Capacitive Events register

This register is used to configure events for keypad, rotary and slider controls. Each bit has a different meaning if the enabled control is a keypad, rotary, or slider.



Memory Map and Registers Description

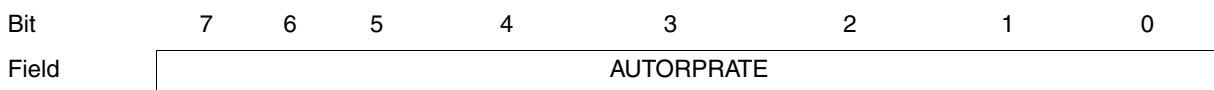
Signal	Description
7-5 Reserved	Reserved
4 RELEN	Release Event Enabler If this bit is set, the Capacitive Event bit in the Status Register 2 is set when all the electrodes in the control are released. 1 Event enabled 0 Event disabled
3 AUTOREPEN	Auto Repeat Enable If this bit is set, the Capacitive Event bit in the Status Register 2 will be set at the rate defined by the Auto Repeat Rate register when the same electrode remains touched. 1 Auto-repeat enabled 0 Auto-repeat disabled
2 HLDEN	Hold event enabler If this bit is set, the Capacitive Event bit in the Status Register 2 will be set when an electrode is first touched and remains touched for the period of time defined by the Auto Repeat Start register. The hold event is produced only once, and auto repeat events may be produced after. 1 Hold event enabled 0 Hold event disabled
1 MOVEN	Movement event enabler If this bit is set, the Capacitive Event bit in the Status Register 2 will be set when a transition from one position to another is detected. 1 Movement event enabled 0 Movement event disabled
0 TOUCHEN	Touch event enabler If this bit is set, the Capacitive Event bit in the Status Register 2 will be set when all electrodes are released and an initial touch is detected in any of the electrodes. 1 Touch event enabled 0 Touch event disabled

Keypad Events

Bit	7	6	5	4	3	2	1	0
Field	MAXKEYS	BUFFOV	Reserved	KEYEXEN	BUFFOVEN	AUTOREPEN	RELEN	TOUCHEN

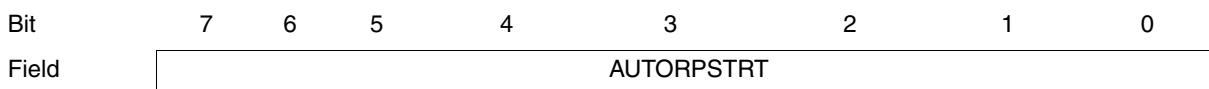
Signal	Description
7 MAXKEYS	This bit reflects if the number of keys allowed to be touched at the same time through the Max Keys register has been exceeded. This bit is automatically cleared when the condition is no longer true. 1 Number of key is exceeded 0 Number of keys below the configured value
6 BUFFOV	This bit reflects if the Keypad FIFO is full. This bit is automatically cleared with a read of the register. 1 Keypad FIFO holds 16 events 0 Keypad FIFO has free elements
5 Reserved	Reserved
4 KEYEXEN	If this bit is set, the Capacitive Event bit in the Status Register 2 is set when the MAXKEYS flag is set. 1 Keys exceeded event enabled 0 Keys exceeded event disabled
3 BUFFOVEN	If this bit is set, the Capacitive Event bit in the Status Register 2 is set when the BUFFOV flag is set. 1 Buffer overflow event enabled 0 Buffer overflow event disabled
2 AUTOREPEN	If this bit is set, the new touch events are stored in the Keypad FIFO at the rate defined by the AUTORPRATE register while the electrode remains touched. 1 Touch event auto repeat enabled. 0 Touch event auto repeat disabled.
1 RELEN	If this bit is set, electrode release events are stored in the Keypad FIFO. 1 Release events stored in FIFO 0 Release events not stored in FIFO
0 TOUCHEN	If this bit is set, electrode touch events are stored in the Keypad FIFO. 1 Touch events stored in FIFO 0 Touch events not stored in FIFO

4.2.5.12 Auto repeat rate register



Signal	Description
7–0 AUTORPRATE	Auto repeat rate — Sets the rate at which the pressed keys are reported when kept pressed. If set to 0, no auto-repeat occurs and the event will be automatically disabled in the Events Register. The user must manually re-enable this event if desired. 0 Auto-repeat feature disabled 1–255 Touch event reported every n measurements

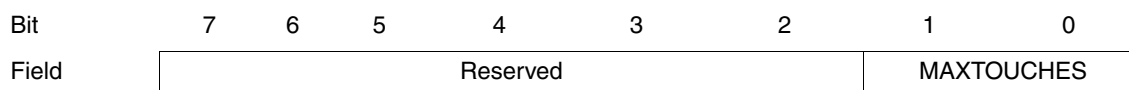
4.2.5.13 Auto repeat rate start register



Signal	Description
7-0 AUTORPSTRT	Auto repeat start Sets the time a key must remain pressed before generating new events at the auto-repeat rate. If set to 0, the auto-repeat state will be entered immediately after the last touch. 0-255 Wait n measurements before auto-repeat.

4.2.5.14 Max Touches register

This register defines the maximum number of simultaneous touched keys reported by a keypad control. This feature can be used to control the function when a bigger than expected area is touched. For example, a multiplexed array of electrodes where only two keys are needed to detect a value or function. In this case, the MaxTouches register is configured with a value of two.



Signal	Description
7-0 MAXTOUCHES	Maximum number of touches. Sets the limit for simultaneous touched keys. If set to 0, no limit is established. 0 No limit established 1-3 Limit set to n keys.

Appendix A Electrical Specifications

This chapter contains electrical and timing specifications.

A.1 Voltage and current operating requirements

Symbol	Description	Minimum	Maximum	Unit
V_{DD}	Supply voltage	1.8	3.6	V
V_{DDA}	Analog supply voltage	1.8	3.6	V
$V_{DD}-V_{DDA}$	V_{DD} to $-V_{DDA}$ differential voltage	-0.1	0.1	
$V_{SS}-V_{SSA}$	V_{SS} to $-V_{SSA}$ differential voltage	-0.1	0.1	
V_{IH}	Input high voltage ¹ <ul style="list-style-type: none"> $2.7\text{ V} \leq V_{DD} \leq 3.6\text{ V}$ $1.8\text{ V} \leq V_{DD} \leq 2.7\text{ V}$ 	$0.7 \times V_{DD}$	—	V
		$0.75 \times V_{DD}$	—	V
V_{IL}	Input low voltage ² <ul style="list-style-type: none"> $2.7\text{ V} \leq V_{DD} \leq 3.6\text{ V}$ $1.8\text{ V} \leq V_{DD} \leq 2.7\text{ V}$ 	—	$0.35 \times V_{DD}$	V
		—	$0.3 \times V_{DD}$	V
I_{IC}	DC Injection current – single pin ³ <ul style="list-style-type: none"> $V_{IN} > V_{DD}$ $V_{IN} < V_{SS}$ 	0	2	mA
		0	-0.2	mA
	DC injection current – sum of all stressed pins ³ <ul style="list-style-type: none"> $V_{IN} > V_{DD}$ $V_{IN} < V_{SS}$ 	0	25	mA
		0	-5	mA
V_{OH}	Output high voltage <ul style="list-style-type: none"> $2.7\text{ V} \leq V_{DD} \leq 3.6\text{ V}$, $I_{OH} = -10\text{ mA}$ $1.8\text{ V} \leq V_{DD} \leq 2.7\text{ V}$, $I_{OH} = -3\text{ mA}$ 	$V_{DD} - 0.5$	—	V
		$V_{DD} - 0.5$	—	V
V_{OL}	Output low voltage <ul style="list-style-type: none"> $2.7\text{ V} \leq V_{DD} \leq 3.6\text{ V}$, $I_{OH} = -10\text{ mA}$ $1.8\text{ V} \leq V_{DD} \leq 2.7\text{ V}$, $I_{OH} = -3\text{ mA}$ 	—	0.5	V
		—	0.5	V
T_J	Die junction temperature	-40	125	°C
T_A	Ambient temperature	-40	105	°C

1. The device always interprets an input as a 1 when the input is greater than or equal to V_{IH} (min.) and less than or equal to V_{IH} (max.), regardless of whether input hysteresis is turned on.
2. The device always interprets an input as a 0 when the input is less than or equal to V_{IL} (max.) and greater than or equal to V_{IL} (min.), regardless of whether input hysteresis is turned on.
3. All functional non-supply pins are internally clamped to V_{SS} and V_{DD} . Input must be current limited to the value specified. To determine the value of the required current-limiting resistor, calculate resistance values for positive and negative clamp voltages, then use the larger of the two values. Power supply must maintain regulation within operating V_{DD} range during instantaneous and operating maximum current conditions. If positive injection current ($V_{in} > V_{DD}$) is greater than I_{DD} , the injection current may flow out of V_{DD} and could result in external power supply going out of regulation. Ensure external V_{DD} load will shunt current greater than the maximum injection current. This will be the greatest risk when the MCU is not consuming power. Examples are: if no system clock is present, or if clock rate is very low (which reduces overall power consumption).

A.2 UART timing specifications

Description	Min	Typical	Max	Unit
Reading response time	—	57	75	μS
Writing response time	—	81	110	μS
Auto baudrate pulse width	1.5	—	—	ms
Time between auto baudrate pulse and first synchronization byte	2	—	—	ms
Auto baudrate timeout	—	—	1.1	s

A.3 ESD handling ratings

Symbol	Description	Min.	Max.	Unit	Notes
V _{HBM}	Electrostatic discharge voltage, human body model	-2000	+2000	V	1
V _{CDM}	Electrostatic discharge voltage, charged-device model	-500	+500	V	2
I	Latch-up current at ambient temperature of 105°C	-100	+100	mA	

1. Determined according to JEDEC Standard JESD22-A114, *Electrostatic Discharge (ESD) Sensitivity Testing Human Body Model (HBM)*.
2. Determined according to JEDEC Standard JESD22-C101, *Field-Induced Charged-Device Model Test Method for Electrostatic-Discharge-Withstand Thresholds of Microelectronic Components*.

A.4 I2C timing specifications

Description	Min	Max	Unit
Reading frame duration	214	1700	μS
Writing frame duration	300	1800	μS

A.5 Capacitive electrodes specifications

Description	Min	Typical	Max	Unit
Electrode capacitance range	1	20	500	pF
Capacitive electrodes sampling period	—	7	—	mS

A.6 Current ratings

Description	Typical ¹	Max ²	Unit
Run <ul style="list-style-type: none"> • 3.3 V • 1.8 V 	11.8 11.8	14.6 13.7	mA
Sleep <ul style="list-style-type: none"> • 3.3 V • 1.8 V 	0.39 0.39	6.9 6.1	mA
Shutdown <ul style="list-style-type: none"> • 3.3 V • 1.8 V 	1 1	120 61	μA

1. Average current measured with the device in idle state.
2. Average current measured while touching the touch screen, with pressure and two touch gestures enabled. A screen with impedances around 600 Ω was used. This value varies depending on the current consumed by the screen when touched.

A.7 Operating mode transition timing specification

Description	Min	Max	Unit
Reset – Run ¹	—	13	mS
Run – Shutdown transition	2 ²	550 ³	μS
Sleep – Run ⁴	5	—	μS
Wake pulse	10	—	μS

1. Valid for power on reset, pin reset and shutdown wakeup.
2. Measured when only the shutdown bit is written without prior register writes.
3. Measured after writing a series of registers before shutdown. Time increases due to the time required to store values in non volatile memory.
4. After a falling edge on Wake pin.

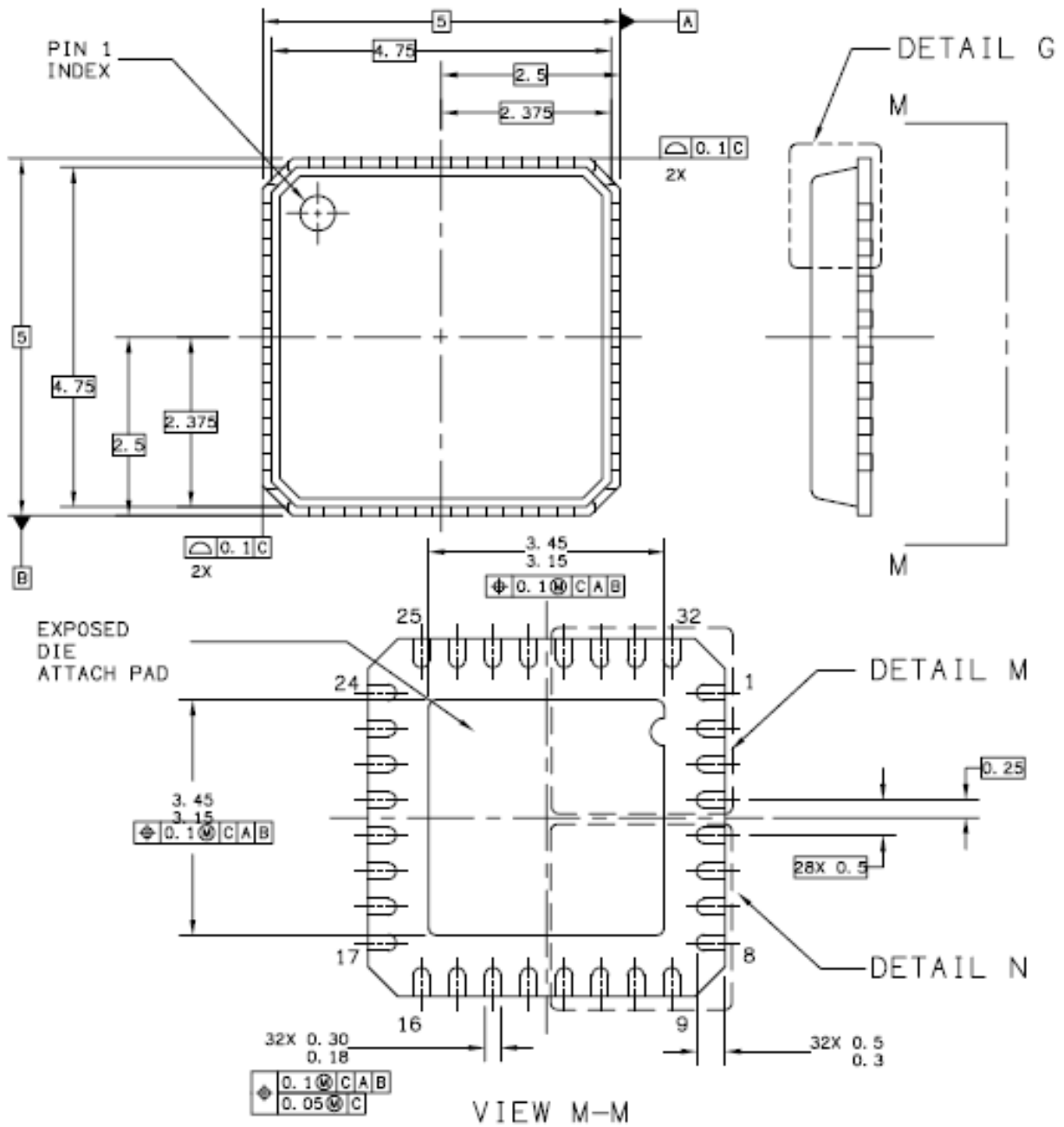
A.8 Resistive screen scan times specifications

Description	Min	Typical	Max	Unit
Signal settling time	14	100	300	μS
Signal measurement time <ul style="list-style-type: none"> • Normal mode • Calibration mode 	— —	150 160	— —	μS

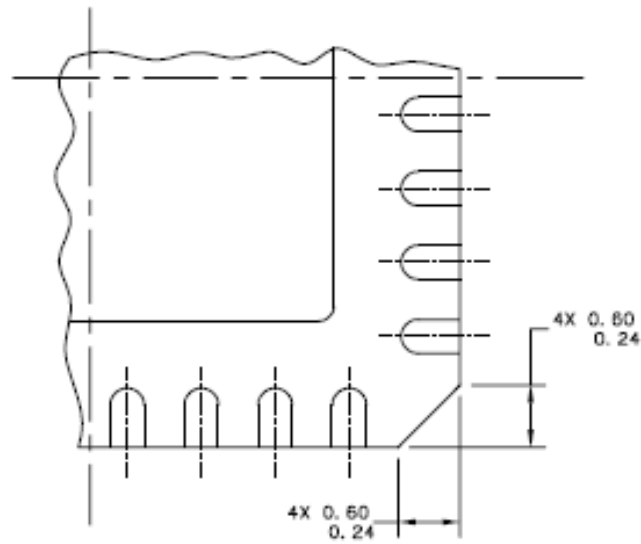
A.9 NVM reliability specifications

Symbol	Description	Min	Typical	Unit
tnvmretee100	Data retention up to 100% of write endurance	5	50	Years
tnvmretee10	Data retention up to 10% of write endurance	10	100	Years
tnvmretee1	Data retention up to 1% of write endurance	15	100	Years
nnvmwree	Write Endurance	315 K	1.6 M	Writes

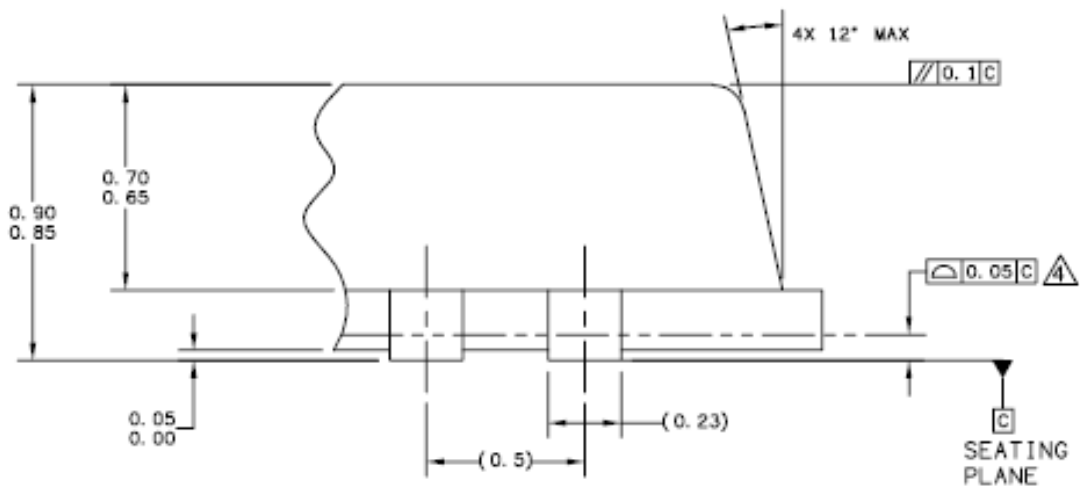
Appendix B Packing Information



© FREESCALE SEMICONDUCTOR, INC. ALL RIGHTS RESERVED.	MECHANICAL OUTLINE	PRINT VERSION NOT TO SCALE	
TITLE: THERMALLY ENHANCED QUAD FLAT NON-LEADED PACKAGE (QFN) 32 TERMINAL, 0.5 PITCH (5X5X1) CASE-OUTLINE	DOCUMENT NO: 98ASA10560D	REV: A	
	CASE NUMBER: 1457-01	07 JUN 2005	
	STANDARD: NON-JEDEC		

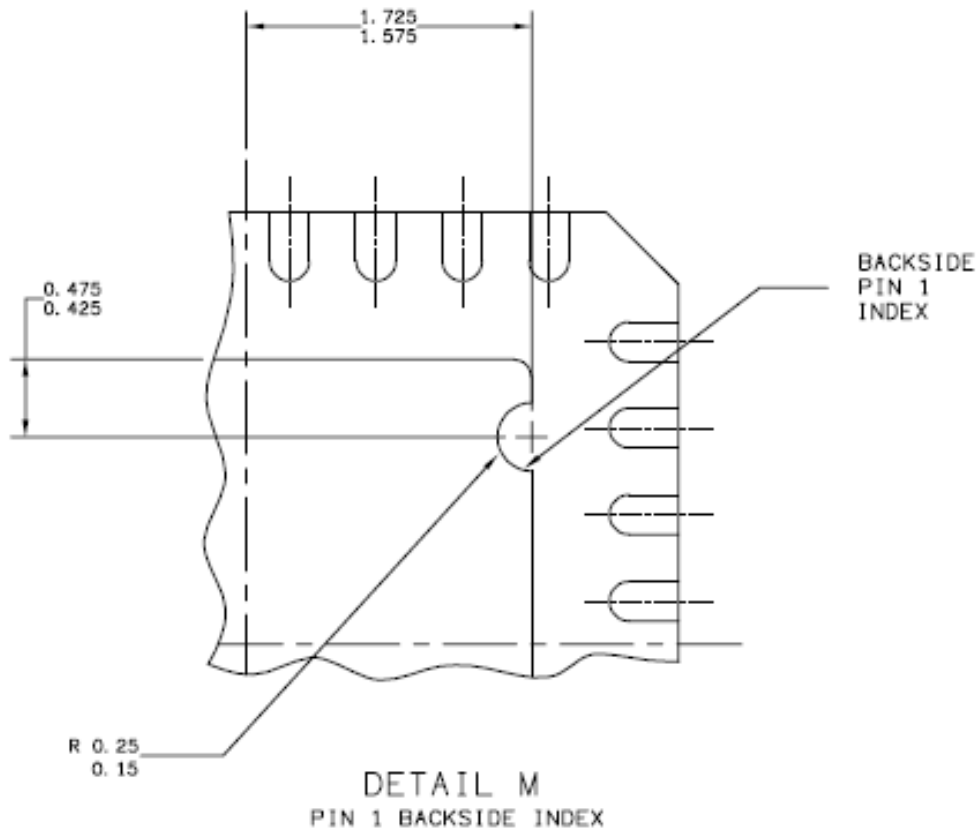


DETAIL N
CORNER CONFIGURATION



DETAIL G
VIEW ROTATED 90° CW

© FREESCALE SEMICONDUCTOR, INC. ALL RIGHTS RESERVED.	MECHANICAL OUTLINE	PRINT VERSION NOT TO SCALE	
TITLE: THERMALLY ENHANCED QUAD FLAT NON-LEADED PACKAGE (QFN) 32 TERMINAL, 0.5 PITCH (5X5X1) CASE-OUTLINE	DOCUMENT NO: 98ASA10560D	REV: A	
	CASE NUMBER: 1457-01	07 JUN 2005	
	STANDARD: NON-JEDEC		




© FREESCALE SEMICONDUCTOR, INC. ALL RIGHTS RESERVED.	MECHANICAL OUTLINE	PRINT VERSION NOT TO SCALE	
TITLE: THERMALLY ENHANCED QUAD FLAT NON-LEADED PACKAGE (QFN) 32 TERMINAL, 0.5 PITCH (5X5X1) CASE-OUTLINE	DOCUMENT NO: 98ASA10560D	REV: A	
	CASE NUMBER: 1457-01	07 JUN 2005	
	STANDARD: NON-JEDEC		

Packing Information

NOTES:

1. ALL DIMENSIONS ARE IN MILLIMETERS.
2. DIMENSIONING AND TOLERANCING PER ASME Y14.5M-1994.
3. THE COMPLETE JEDEC DESIGNATOR FOR THIS PACKAGE IS: HF-PQFP-N.

4.  COPLANARITY APPLIES TO LEADS AND DIE ATTACH PAD.

How to Reach Us:**Home Page:**

www.freescale.com

Web Support:

<http://www.freescale.com/support>

USA/Europe or Locations Not Listed:

Freescale Semiconductor, Inc.
Technical Information Center, EL516
2100 East Elliot Road
Tempe, Arizona 85284
+1-800-521-6274 or +1-480-768-2130
www.freescale.com/support

Europe, Middle East, and Africa:

Freescale Halbleiter Deutschland GmbH
Technical Information Center
Schatzbogen 7
81829 Muenchen, Germany
+44 1296 380 456 (English)
+46 8 52200080 (English)
+49 89 92103 559 (German)
+33 1 69 35 48 48 (French)
www.freescale.com/support

Japan:

Freescale Semiconductor Japan Ltd.
Headquarters
ARCO Tower 15F
1-8-1, Shimo-Meguro, Meguro-ku,
Tokyo 153-0064
Japan
0120 191014 or +81 3 5437 9125
support.japan@freescale.com

Asia/Pacific:

Freescale Semiconductor Hong Kong Ltd.
Technical Information Center
2 Dai King Street
Tai Po Industrial Estate
Tai Po, N.T., Hong Kong
+800 2666 8080
support.asia@freescale.com

For Literature Requests Only:

Freescale Semiconductor Literature Distribution Center
P.O. Box 5405
Denver, Colorado 80217
1-800-441-2447 or 303-675-2140
Fax: 303-675-2150
LDCForFreescaleSemiconductor@hibbertgroup.com

Document Number: CRTOUCHDS

Rev. 3

04/2013

Information in this document is provided solely to enable system and software implementers to use Freescale Semiconductor products. There are no express or implied copyright licenses granted hereunder to design or fabricate any integrated circuits or integrated circuits based on the information in this document.

Freescale Semiconductor reserves the right to make changes without further notice to any products herein. Freescale Semiconductor makes no warranty, representation or guarantee regarding the suitability of its products for any particular purpose, nor does Freescale Semiconductor assume any liability arising out of the application or use of any product or circuit, and specifically disclaims any and all liability, including without limitation consequential or incidental damages. "Typical" parameters that may be provided in Freescale Semiconductor data sheets and/or specifications can and do vary in different applications and actual performance may vary over time. All operating parameters, including "Typicals", must be validated for each customer application by customer's technical experts. Freescale Semiconductor does not convey any license under its patent rights nor the rights of others. Freescale Semiconductor products are not designed, intended, or authorized for use as components in systems intended for surgical implant into the body, or other applications intended to support or sustain life, or for any other application in which the failure of the Freescale Semiconductor product could create a situation where personal injury or death may occur. Should Buyer purchase or use Freescale Semiconductor products for any such unintended or unauthorized application, Buyer shall indemnify and hold Freescale Semiconductor and its officers, employees, subsidiaries, affiliates, and distributors harmless against all claims, costs, damages, and expenses, and reasonable attorney fees arising out of, directly or indirectly, any claim of personal injury or death associated with such unintended or unauthorized use, even if such claim alleges that Freescale Semiconductor was negligent regarding the design or manufacture of the part.

RoHS-compliant and/or Pb-free versions of Freescale products have the functionality and electrical characteristics as their non-RoHS-compliant and/or non-Pb-free counterparts. For further information, see <http://www.freescale.com> or contact your Freescale sales representative.

For information on Freescale's Environmental Products program, go to <http://www.freescale.com/epp>.

Freescale™ and the Freescale logo are trademarks of Freescale Semiconductor, Inc. All other product or service names are the property of their respective owners.
© Freescale Semiconductor, Inc. 2007-2012. All rights reserved.

Mouser Electronics

Authorized Distributor

Click to View Pricing, Inventory, Delivery & Lifecycle Information:

[NXP:](#)

[CRTOUCHB10VFM](#)