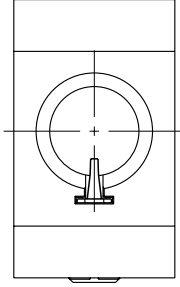
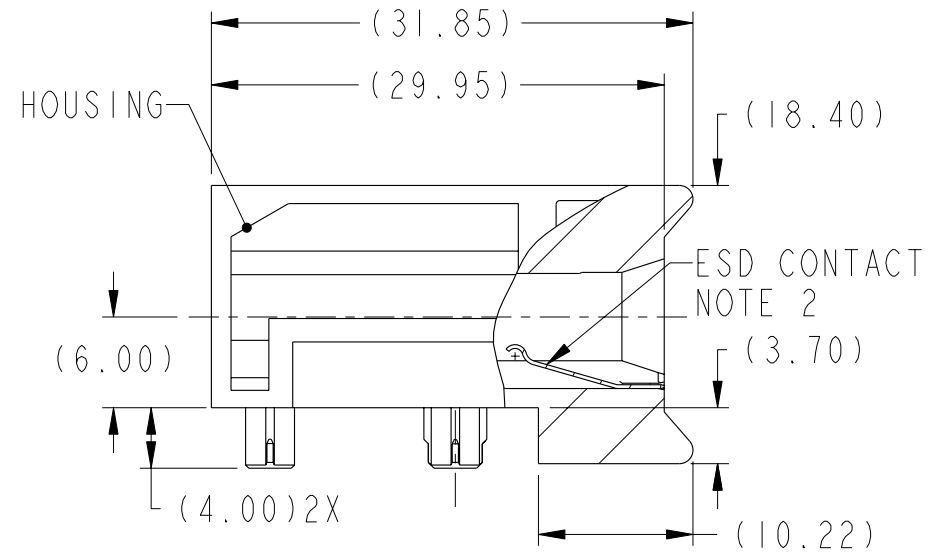


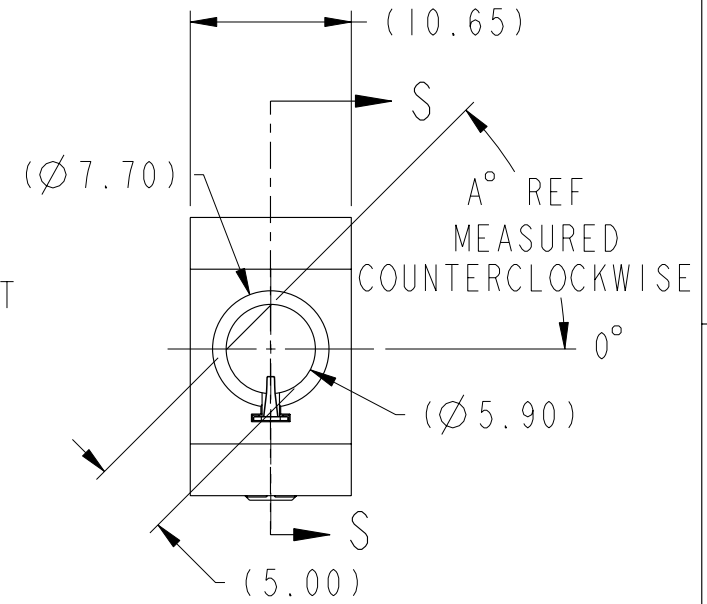
PRODUCT NUMBER
SEE TABLE, SHT 3



VIEW H
ESD ORIENTAION

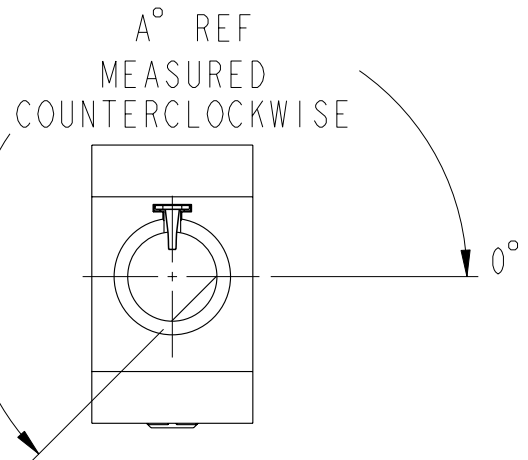


PARTIAL SECTION S-S

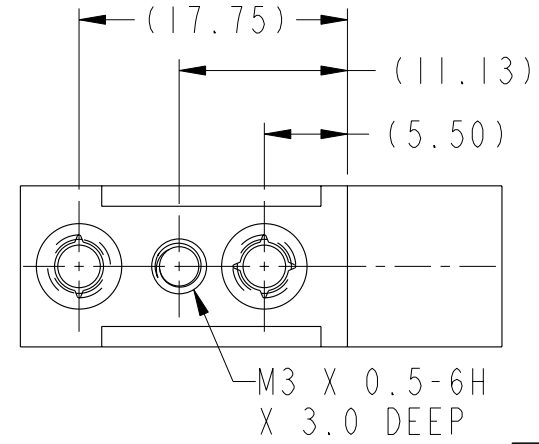


VIEW F
ESD ORIENTATION

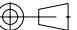


(P/N 10098939-102 SHOWN)



VIEW G
ESD ORIENTATION



rev	ecn no	dr	date
A	S09-0296	CH	2009-09-17
-	-	-	-
-	-	-	-
-	-	-	-
-	-	-	-
-	-	-	-

www.fciconnect.com			surface - ASME Y14.5		tolerance std ASME Y14.5		projection 		 MM					
			TOLERANCES UNLESS OTHERWISE SPECIFIED											
Dr	C. H. TAN	2009-04-03	ANGULAR LINEAR		0.X ±0.3		size A4	Scale 1:1						
Eng	C. H. TAN	2009-04-03			0.XX ±0.10									
Chr	C. H. TAN	2009-09-17			0.XXX ±0.050									
Appr	JOEY NG	2009-09-17	0° ±2°				ECN		S09-0296					
			Product family					-		Spec ref				
			title			10.8mm GUIDE MODULE ASSY WITH ESD & KEYING OPTIONS			dwg no		10098939		Rev. A	
			catalog no			-			CUSTOMER			sheet 1 of 4		

REV F - 2009-04-17



Copyright FCI.

A

B

C

D

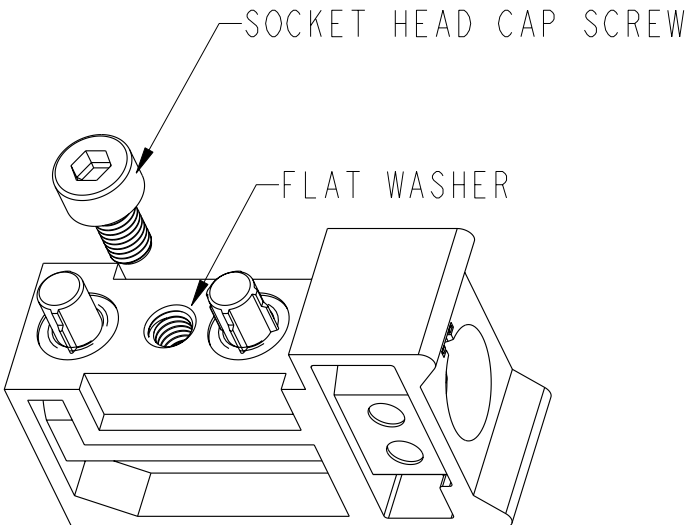


TABLE 1 (SEE NOTE 10)		
CUSTOMER BOARD THICKNESS	DIM "L"	P/N "Z" DESIGNATION
1.60 MAX	4.00	10098939-1XYZ100LF

A

B

C

D

P/N DESIGNATION: 10098939-1XYZ00LF

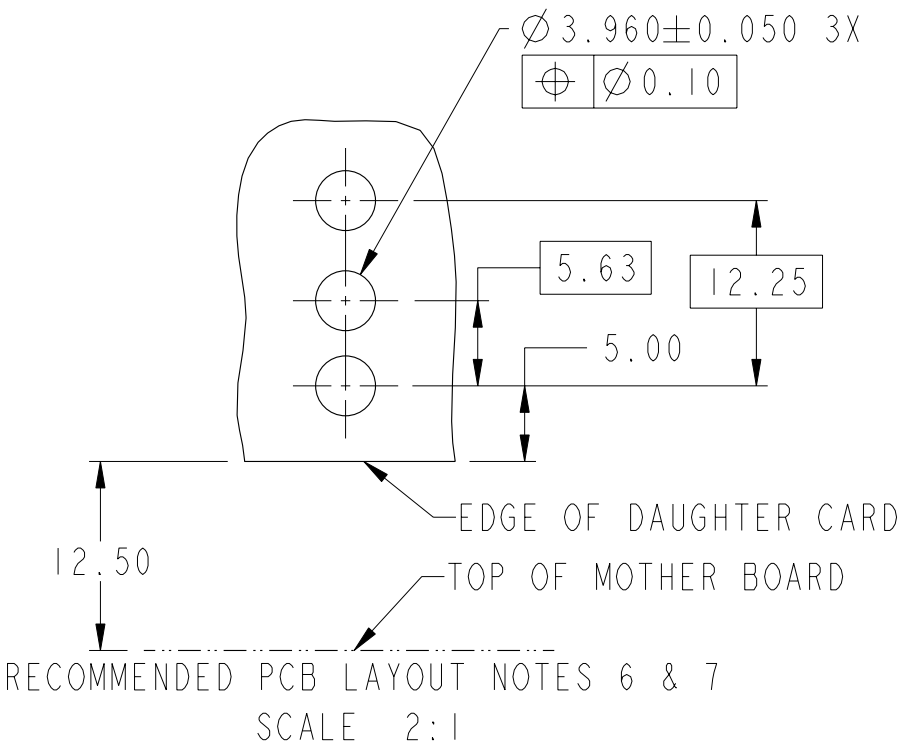
- LEAD-FREE DESIGNATION: NOTE 8
- BOARD THICKNESS/SCREW LENGTH: SEE TABLE 1
- KEYING ORIENTATION: SEE TABLE 2 (SHEET 3)
- ESD PIN: SEE NOTE 4

	title	10.8mm GUIDE MODULE ASSY WITH ESD & KEYING OPTIONS		dwg no	10098939	Rev.	A
	catalog no	-	CUSTOMER	sheet 2 of 4			



Copyright FCI.

TABLE 2		
PRODUCT NUMBER NOTES 4	DIM A	ESD PIN LOCATION
10098939-1X1Z00LF	0°	PER VIEW F
10098939-1X2Z00LF	45°	PER VIEW F
10098939-1X3Z00LF	90°	PER VIEW F
10098939-1X4Z00LF	135°	PER VIEW G
10098939-1X5Z00LF	180°	PER VIEW G
10098939-1X6Z00LF	225°	PER VIEW G
10098939-1X7Z00LF	270°	PER VIEW G
10098939-1X8Z00LF	315°	PER VIEW F
10098939-1X9Z00LF	N/A NOTE 5	PER VIEW H



	title	10.8mm GUIDE MODULE ASSY WITH ESD & KEYING OPTIONS	dwg no	10098939	Rev.	A
	catalog no	-	CUSTOMER	sheet 3 of 4		

A

B

C

D

A

B

C

D

- ①. MATERIAL: ZINC ALLOY
- ②. FINISH: HOUSING; ZINC YELLOW CHROMATE
ESD CONTACT; 1.27 μ m MINIMUM NICKEL ALL OVER
3. APPLICATION SPEC: GS-20-045
- ④. X = 0 FOR MODULES WITH ESD GROUNDING OPTION
X = 1 FOR MODULES W/O ESD GROUNDING OPTION
- ⑤. FOR THE -109xxxLF VERSION (NO KEY) THE MATING GUIDE PIN MUST BE
ORIENTATED SO IT MAKES CONTACT WITH THE ESD PIN
- ⑥. THRU HOLE PLATING AND ANNULAR RINGS MUST BE ADDED AS
APPROPRIATE FOR APPLICATIONS WITH THE ESD GROUNDING OPTION.
FINISHED HOLE SIZE IS THE SAME REGARDLESS OF PLATED BARREL OR NOT
- ⑦. REFER TO CUSTOMER DRAWING 10035911 FOR INFORMATION
REGARDING PCB LAYOUT OF POWER AND GUIDE MODULES
RELATIVE TO SIGNAL MODULES
- ⑧. THIS PRODUCT MEETS EUROPEAN UNION DIRECTIVES AND OTHER
COUNTRY REGULATIONS AS DESCRIBED IN GS-22-008.
9. PACKAGING MEETS GS-14-920 LEAD FREE LABELING SPECIFICATION.
10. SOCKET SCREW LENGTH IS DETERMINED BY CARD THICKNESS & WASHERS
THICKNESS. REFER TO SECTION 7.2 OF GS-20-045 FOR SCREW LENGTH SIZING



Copyright FCI.

FCI	title	10.8mm GUIDE MODULE ASSY WITH ESD & KEYING OPTIONS		dwg no	10098939	Rev.	A
	catalog no	-		CUSTOMER	sheet 4 of 4		

Mouser Electronics

Authorized Distributor

Click to View Pricing, Inventory, Delivery & Lifecycle Information:

[FCI / Amphenol:](#)

[10098939-101100LF](#) [10098939-102100LF](#) [10098939-103100LF](#)