



BOARD LEVEL COOLING – Extruded 5290

Extruded 5290 is a series of dual radial board level heat sinks designed to cool TO-218, TO-220, and TO-247 devices. Representative image only.

ORDERING INFORMATION

Part Number	Device Type
529701B02100G	TO-218, TO-247
529701B02500G	TO-218
529702B02500G	TO-220
529801B02500G	TO-218
529802B02500G	TO-220
529901B02100G	TO-218
529901B02500G	TO-218
529902B02100G	TO-220
529902B02500G	TO-220
530001B02100G	TO-218
530001B02500G	TO-218
530002B00000G	TO-220
530002B02500G	TO-220



HEAT SINK DETAILS

Property	Details
Material	Aluminum
Finishing	Black Anodize
Device Attachment Options	Requires Mounting Kit
Thermal Interface Material	-

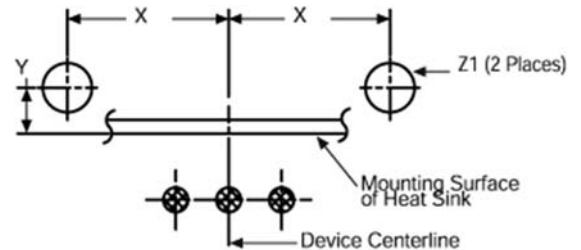
Property	Details
Heat Sink Width (mm)	41.91
Heat Sink Length (mm)	25.40
Heat Sink Height (mm)	See "A" Dim below
Heat Sink Mounting Direction	Vertical

MECHANICAL & PERFORMANCE

Drawing dimensions are shown in mm, (in)

Part Number	"A" Dim	"B" Dim	"C" Dim
529701B02100G	25.40	-	-
529701B02500G	25.40	21.59	3.66
529702B02500G	25.40	18.29	3.17
529801B02500G	38.10	21.59	3.66
529802B02500G	38.10	18.29	3.17
529901B02100G	50.80	-	-
529901B02500G	50.80	21.59	3.66
529902B02100G	50.80	18.29	3.18
529902B02500G	50.80	18.29	3.17
530001B02100G	63.50	-	-
530001B02500G	63.50	21.59	3.66
530002B00000G	63.50	-	-
530002B02500G	63.50	18.29	3.17

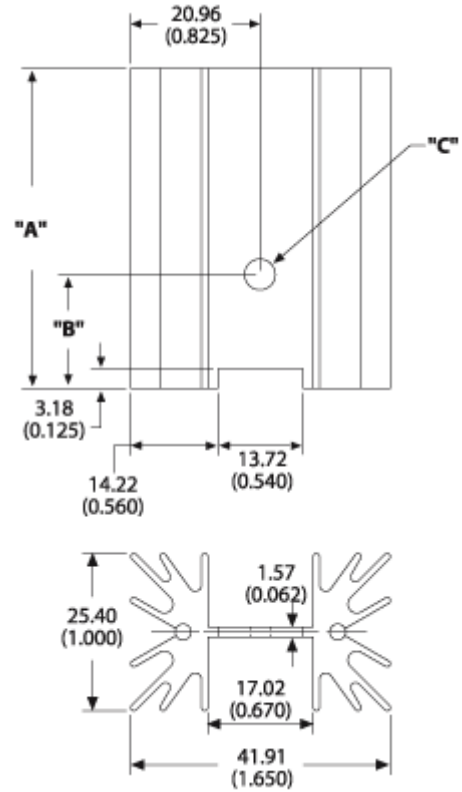
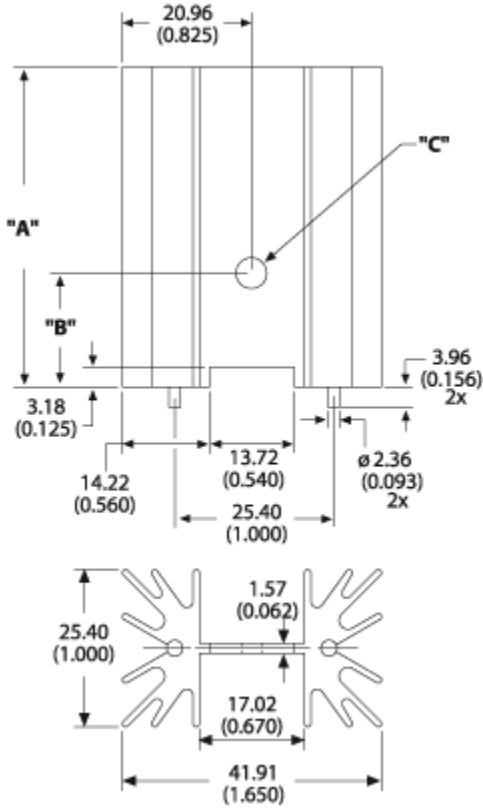
Property	Details
"X" Dim	12.70 (0.500)
"Y" Dim	0.79 (0.031)
"Z" Dim	2.67 (0.105)



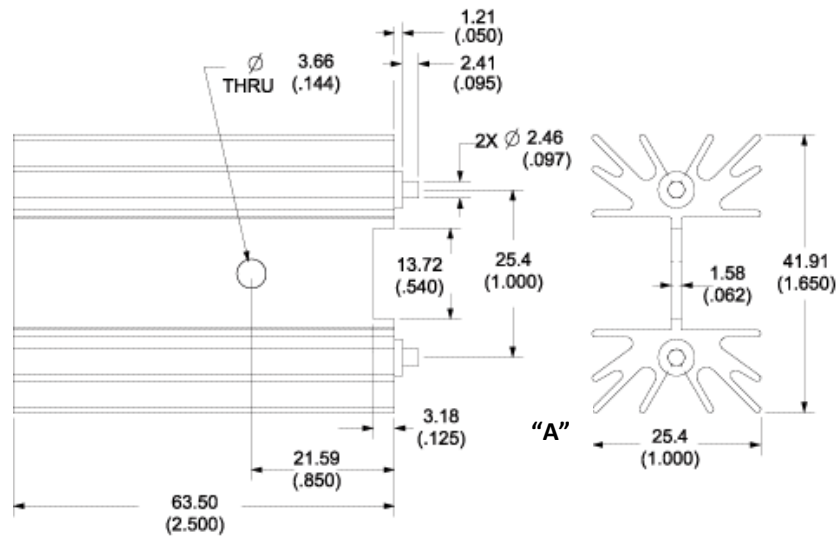
Board Level Cooling – Extruded 5290

Part Number: 529701B02500G, 529702B02500G,
529801B02500G, 529802B02500G, 529901B02500G,
529902B02500G, 530001B02500G, 530002B02500G

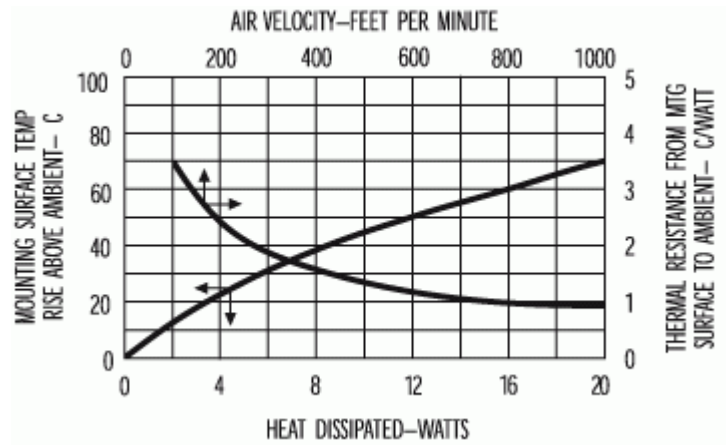
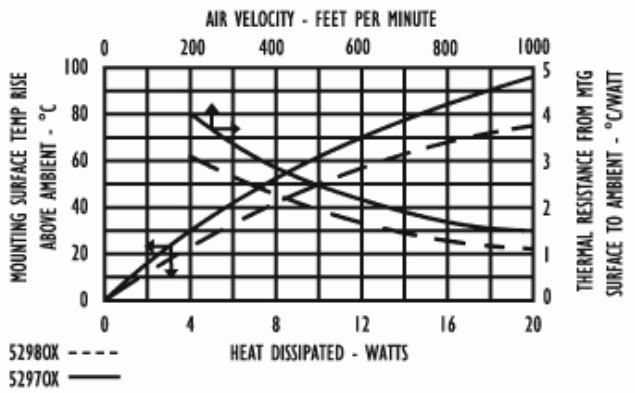
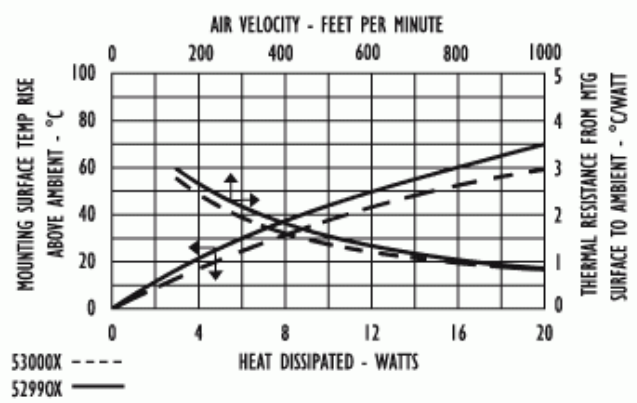
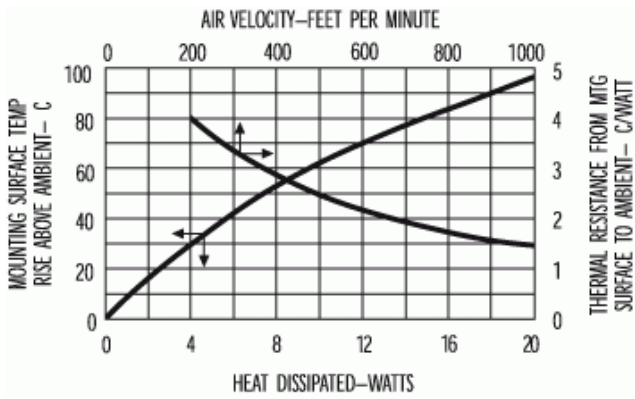
Part Number: 530002B00000G



Part Number: 529701B02100G, 529901B02100G,
529902B02100G, 530001B02100G



Board Level Cooling – Extruded 5290



Mouser Electronics

Authorized Distributor

Click to View Pricing, Inventory, Delivery & Lifecycle Information:

[Aavid:](#)

[529902B02500G](#) [529801B02500G](#) [529802B02500G](#) [529901B02500G](#) [529701B02100G](#) [529701B02500G](#)
[529702B02500G](#) [529901B02100G](#) [529902B02100G](#) [530001B02100G](#) [530001B02500G](#) [530002B02500G](#)
[529701B02500](#) [529702B02500](#)