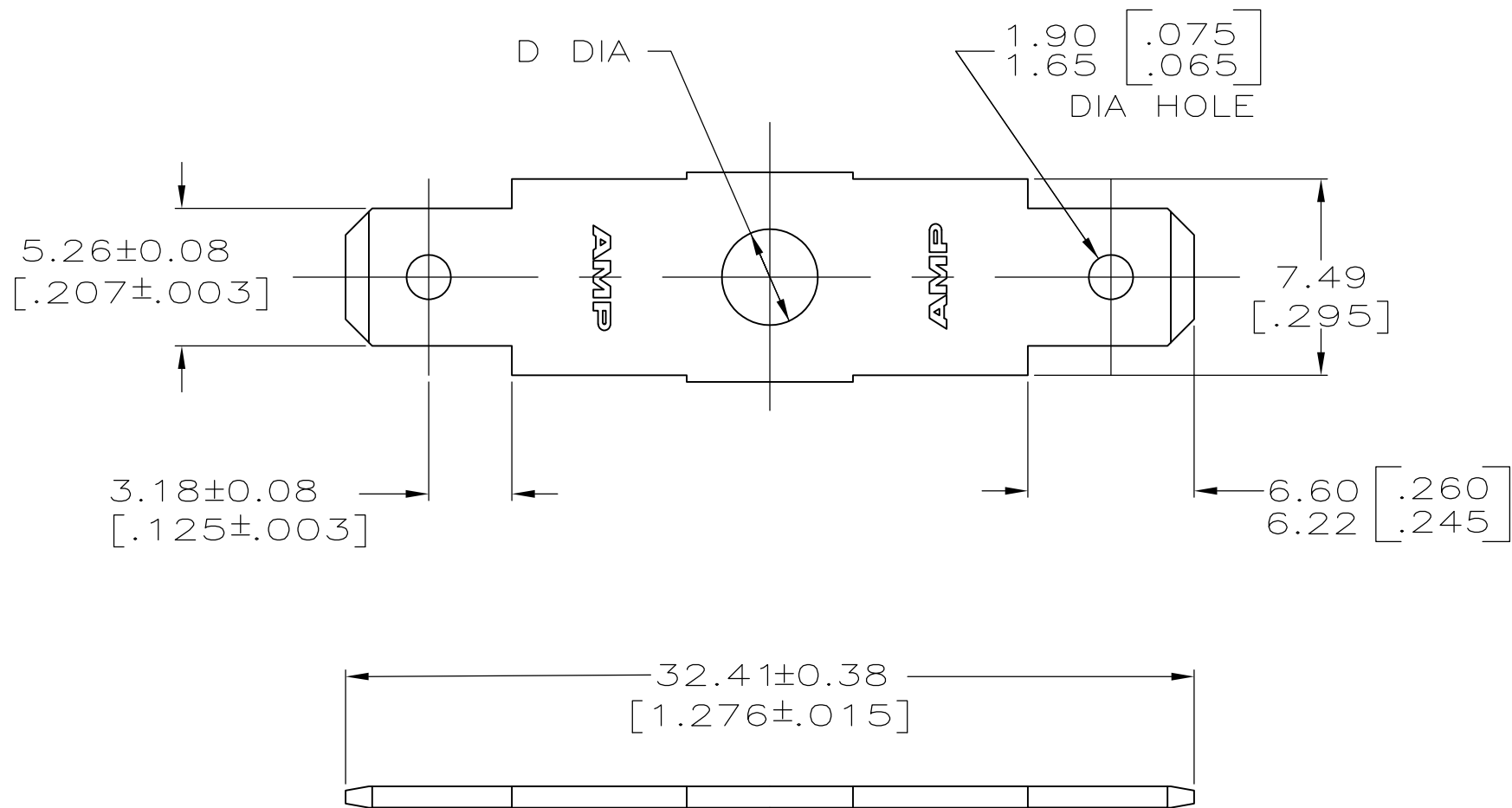


THIS DRAWING IS UNPUBLISHED. RELEASED FOR PUBLICATION
 © COPYRIGHT BY TYCO ELECTRONICS CORPORATION. ALL INTERNATIONAL RIGHTS RESERVED.

LOC	DIST	REVISIONS					
		P	LTR	DESCRIPTION	DATE	DWN	APVD
—	—		G1	REVISED PER ECO-09-009918	4/23/09	SS	PD



1 SUPPLIED IN LOOSE PIECE.
 2 ELECTRICAL TEST TAB ONLY.

D ^{±0.076} DIA [.003]	STUD #	FINISH	MATERIAL	PART NO.
3.68 [.145]	6	0.002032 [.000080] MIN TIN	0.813±0.012 [.032±.0005] CR STEEL	60922-5 ²
3.68 [.145]	6	0.002032 [.000080] MIN TIN	0.813±0.025 [.032±.001] BRASS	60922-4
OBSOLETE 5.00 [.197]	10	—	0.813±0.025 [.032±.001] BRASS	60922-3
4.34 [.171]	8	—	0.813±0.025 [.032±.001] BRASS	60922-2
3.68 [.145]	6	—	0.813±0.007 [.032±.0003] BRASS	60922-1

THIS DRAWING IS A CONTROLLED DOCUMENT.		DWN JR RUTH 8/6/96	Tyco Electronics Corporation Harrisburg, PA 17105-3608	
DIMENSIONS: mm [INCHES]		CHK MS FEHER 8/6/96	NAME TAB, FASTON, 5.21 [.205] SERIES	
TOLERANCES UNLESS OTHERWISE SPECIFIED: 0 PLC ± - 1 PLC ± - 2 PLC ± 0.25 [.010] 3 PLC ± - 4 PLC ± - ANGLES ± -		APVD P DESANTIS 8/6/96	PRODUCT SPEC — APPLICATION SPEC —	
MATERIAL SEE TABLE	FINISH SEE TABLE	WEIGHT —	SIZE A3	CAGE CODE 00779
CUSTOMER DRAWING		DRAWING NO G-60922	RESTRICTED TO —	SCALE 4:1
		SHEET 1 OF 1	REV G1	

Mouser Electronics

Authorized Distributor

Click to View Pricing, Inventory, Delivery & Lifecycle Information:

[TE Connectivity:](#)

[60922-5](#)