



### Features

- Carbon element
- Plain or knurled shaft option
- Metal bushing/metal shaft
- Center detent standard
- Rear solder lugs or PC pins
- 250K and 500K standard resistance values
- Standard M and N taper
- RoHS compliant\*

## PDB182-GTRB - 17 mm Blend-Balance Guitar Potentiometer

### Electrical Characteristics

Taper..... Linear, audio  
 Standard Resistance Range ..... 250K to 500K ohms  
 Standard Resistance Tolerance..... ±20 %  
 Residual Resistance ..... 1 % max.

### Environmental Characteristics

Operating Temperature.... -10 °C to +50 °C  
 Power Rating  
 Dual Section ..... 0.06 watt  
 Maximum Operating Voltage  
 Audio ..... 150 V  
 Sliding Noise ..... 47 mV max.

### Mechanical Characteristics

Mechanical Angle ..... 300 ° ±5 °  
 Rotational Torque ..... 10 to 150 gf-cm  
 Detent Torque ..... 50 to 300 gf-cm  
 Stop Strength ..... 5 kg-cm min.  
 Rotational Life ..... 15,000 cycles  
 Soldering Condition  
 Manual/Wave  
 ..... 260 °C max. for 3 seconds max.  
 Wash..... Not recommended  
 Hardware ..... One flat washer and mounting nut supplied per potentiometer with bushing

### Standard Resistance Table

| Resistance (Ohms) | Resistance Code |
|-------------------|-----------------|
| 250,000           | 254             |
| 500,000           | 504             |

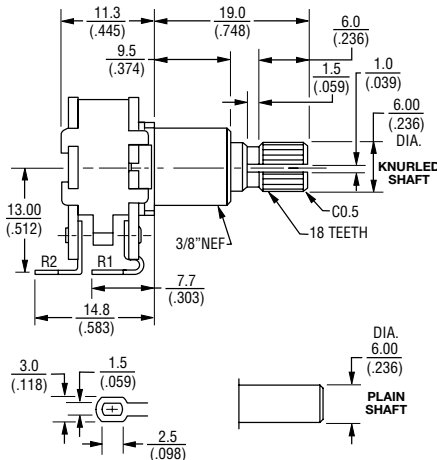
### How to Order

**PDB18 2 - GTR B1 - 254 MN**

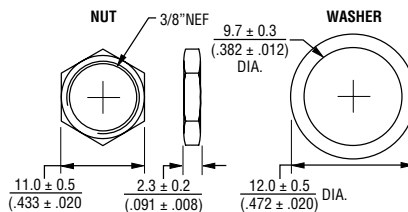
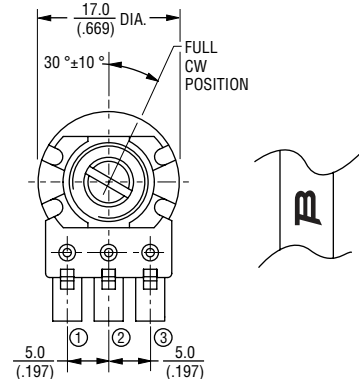
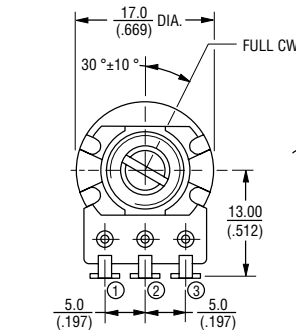
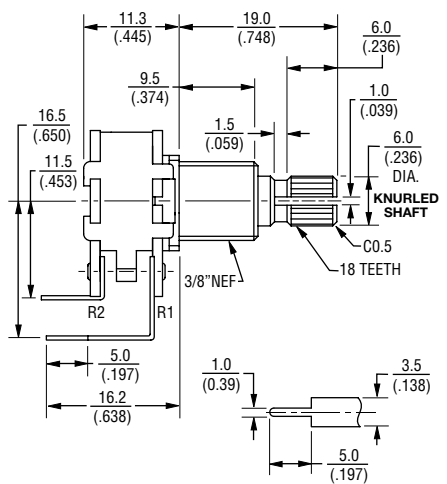
Model \_\_\_\_\_  
 Number of Sections \_\_\_\_\_  
 2 = Dual Section  
 Guitar Pot Designator \_\_\_\_\_  
 Configuration \_\_\_\_\_  
 B1 = Knurled Shaft/Solder Lugs/  
 Center Detent  
 B2 = Plain Shaft/Solder Lugs/  
 Center Detent  
 B3 = Knurled Shaft/PC Pins/  
 Center Detent  
 B4 = Plain Shaft/PC Pins/  
 Center Detent  
 Resistance Code (See Table) \_\_\_\_\_  
 Resistance Taper (See Taper Chart) \_\_\_\_\_

### Product Dimensions

**PDB182-GTRB1,  
PDB182-GTRB2**



**PDB182-GTRB3,  
PDB182-GTRB4**



TOLERANCES:  
 UNDER 10.0 = ±0.3 / (.394) = (±.012)    10.0 - 100 = ±0.5 / (.394 - 3.937) = (±.020)

\*RoHS Directive 2002/95/EC Jan. 27, 2003 including annex and RoHS Recast 2011/65/EU June 8, 2011.

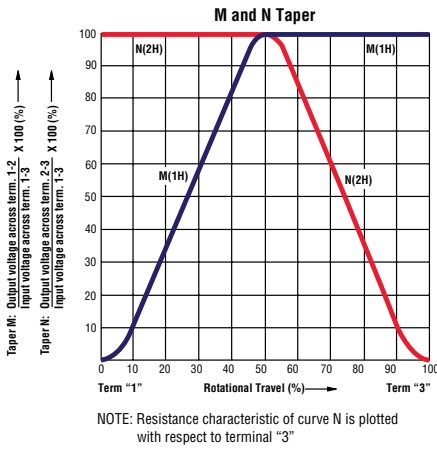
Specifications are subject to change without notice.

The device characteristics and parameters in this data sheet can and do vary in different applications and actual device performance may vary over time. Users should verify actual device performance in their specific applications.

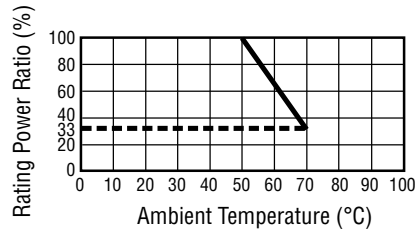
# PDB182-GTRB - 17 mm Blend-Balance Guitar Potentiometer

**BOURNS®**

## Taper Chart

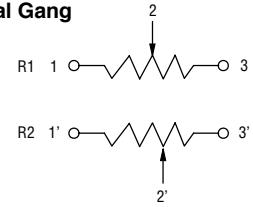


## Derating Curve



## Circuit

### Dual Gang



**BOURNS®**

**Asia-Pacific:** Tel: +886-2 2562-4117 • Email: [asiacus@bourns.com](mailto:asiacus@bourns.com)

**EMEA:** Tel: +36 88 520 390 • Email: [eurocus@bourns.com](mailto:eurocus@bourns.com)

**The Americas:** Tel: +1-951 781-5500 • Email: [americus@bourns.com](mailto:americus@bourns.com)

[www.bourns.com](http://www.bourns.com)

REV. 06/16

Specifications are subject to change without notice.

The device characteristics and parameters in this data sheet can and do vary in different applications and actual device performance may vary over time.

Users should verify actual device performance in their specific applications.