

PRODUCT NUMBER  
76347-YXXYLF

INDICATES THE PRODUCT IS RoHS  
COMPATIBLE, SEE NOTE 3

PACKAGING, NOTE 2

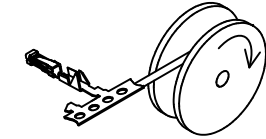
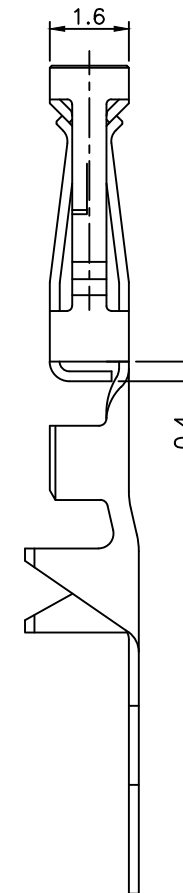
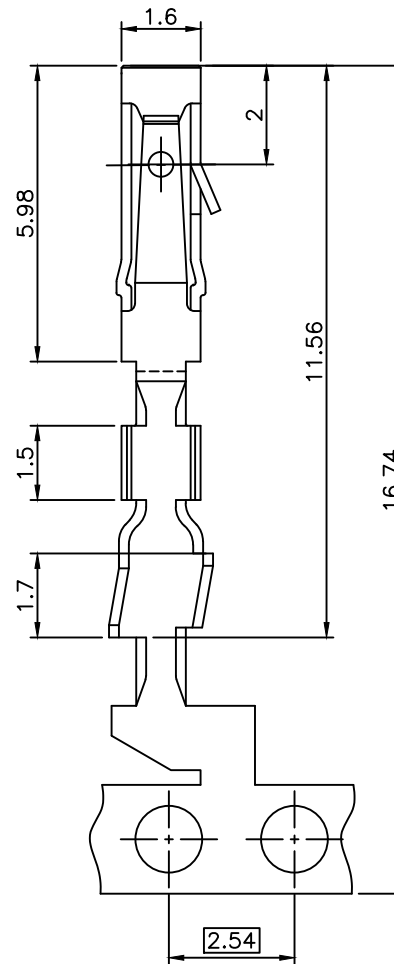
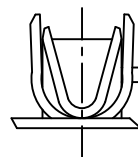
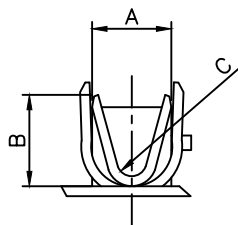
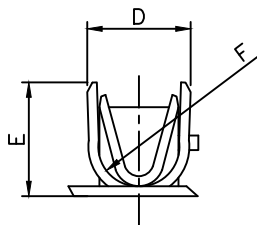
DEPENDS ON:  
INSULATION BARREL,  
WIRE BARREL AWG RANGE,  
REELING METHOD,  
NUMBER OF PRODUCT.  
SEE TABLE SHEET 2/2.

PLATING CODE  
3= 0.76µm GOLD ON CONTACT AREA.  
2µm MIN MATTE TIN ON TAIL.  
4= 5µm TIN-LEAD ON CONTACT AREA.  
2µm MIN MATTE TIN ON TAIL.  
OVER 1.27µm Ni MIN

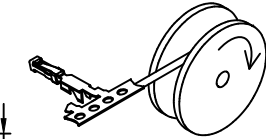
NOTES:

- 1 - TERMINAL MATERIAL: PHOSPHOR BRONZE.
- 2 - PACKAGING :  
= PRODUCT PACKED IN REEL.  
"V" = PRODUCT PACKED IN REEL FOR CUSTOMER DEDICATED PART
- 3 - RoHS COMPATIBLE PRODUCT SPECIFICATIONS
  - a - PLATING:  
- "LF" MEANS THE PRODUCT IS LEAD-FREE,  
2µm MINIMUM MATTE TIN OVER 1.27µm  
MINIMUM NICKEL UNDERPLATE.
  - b - LABELING:  
- MEETS PACKAGING SPECS AS PER GS-14-920
  - c - LEGAL STATEMENT: SEE GS-22-008

THE PRODUCT IS NOT INTENDED TO BE EXPOSED TO A



REELING METHOD P



REELING METHOD R



FCIconnect.com

Copyright FCI

mat'l. code		surface		tolerance		projection		product family	
		ISO 1302		ISO 406 ISO 1101		mm		DUBOX	
ltr		ecn no		dr		date		title	
S		F06-0237		DLE		06.07.103		CtW CONTACT ON REEL	
T		F-27117		LMU		17.05.30		scale 10:1	
M		F04-036d		DLE		04.10.11		dr	
N		F04-0373		DLE		04.11.19		engr	
P		F05-028d		DLE		05.11.07		chr	
R		F06-0215		DLE		06.06.30		appd	
sheet		revision		T		E		type	
index		sheet		1		2		CUSTOMER Drawing	



PRODUCT NUMBER	WIRE BARREL			INSULATION BARREL				REELING		APPLICATION DATA	
	AWG SIZE	A	B	C	INSULATION DIA RANGE	D	E	F	METHOD		PRODUCTS
76347-X01(Y)LF	22-30	1.6	1.6	0.3	0.9-1.5	2.1	2.6	0.8	P	15 000	TA 317
76347-X02(Y)LF	22-30	1.6	1.6	0.3	0.9-1.5	2.1	2.6	0.8	R	15 000	TA 317
76347-X03(Y)LF	22-30	1.6	1.6	0.3	0.9-1.5	2.1	2.6	0.8	R	500	TA 317
76347-X11(Y)LF	20-22	2.1	2.0	0.6	1.1-1.6	2.4	2.2	0.8	P	15 000	TA 317
76347-X12(Y)LF	20-22	2.1	2.0	0.6	1.1-1.6	2.4	2.2	0.8	R	15 000	TA 317
76347-X41(Y)LF	28-32	1.7	1.0	0.3	0.55-0.8	1.3	1.3	0.3	P	15 000	TA 340
76347-X42(Y)LF	28-32	1.7	1.0	0.3	0.55-0.8	1.3	1.3	0.3	R	15 000	TA 340



Copyright FCI

mat'l. code		surface		tolerance		projection		product family	
		ISO 1302 <input checked="" type="checkbox"/>		ISO 406 ISO 1101				DUBOX	
ltr	ecn no	dr	date	tolerances unless otherwise specified		mm		title	
A	F10103	GCO	00.12.22	angles				CtW CONTACT ON REEL	
B	F10527	GSA	01.09.20	linear		scale 2.5:1		dwg no	
C	F04-0373	DLE	04.11.19					sheet 2 of 2	
D	F06-0215	DLE	06.06.30	dr	G CORBOZ	00.12.22			size
E	F-27117	LMU	17.05.30	enr	P NIZZI	00.12.22			A3
				chr					
				appd	P N	00.12.22			type
									CUSTOMER Drawing
sheet index	revision sheet								

# Mouser Electronics

Authorized Distributor

Click to View Pricing, Inventory, Delivery & Lifecycle Information:

[FCI / Amphenol:](#)

[76347-DGC302LF](#)