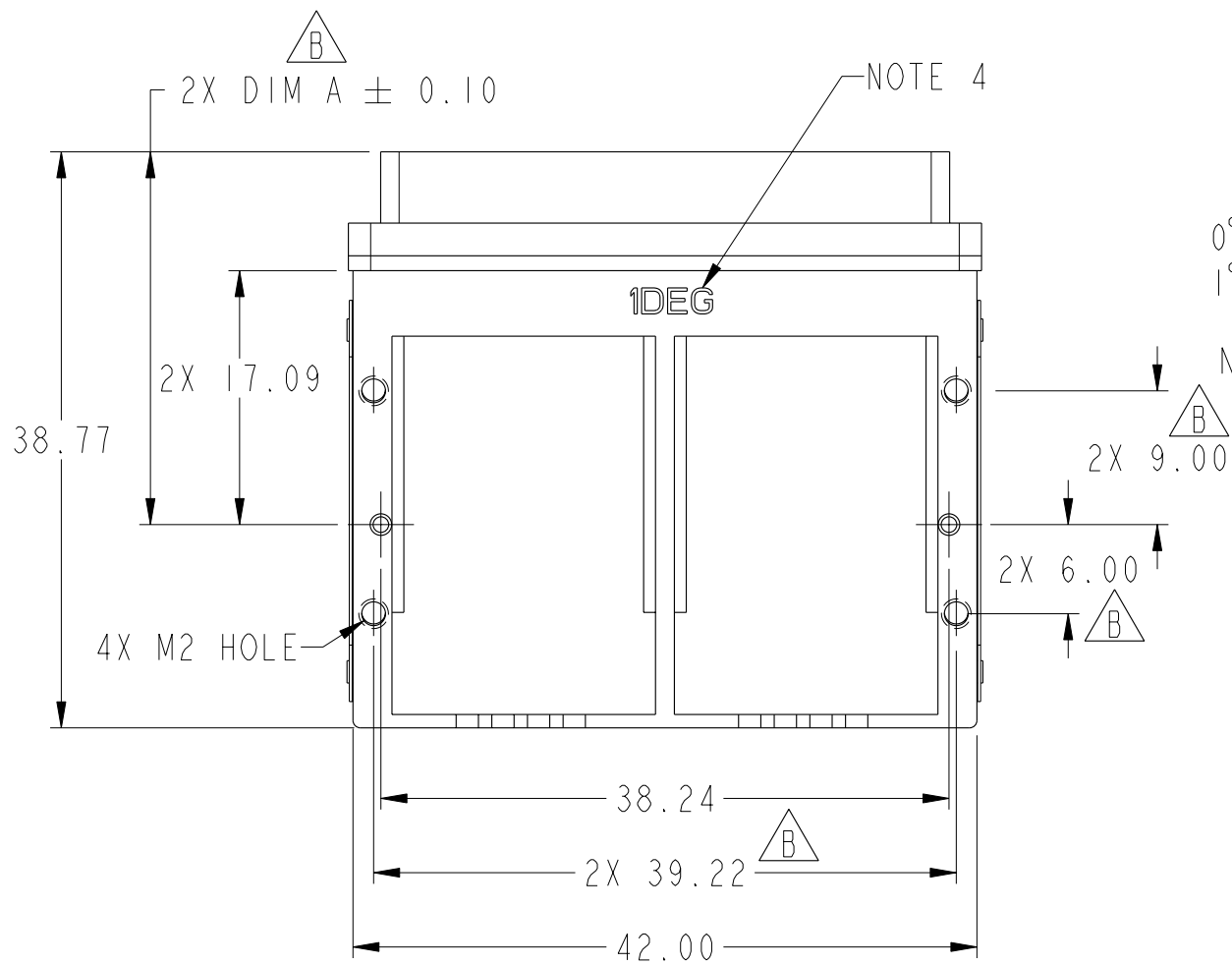
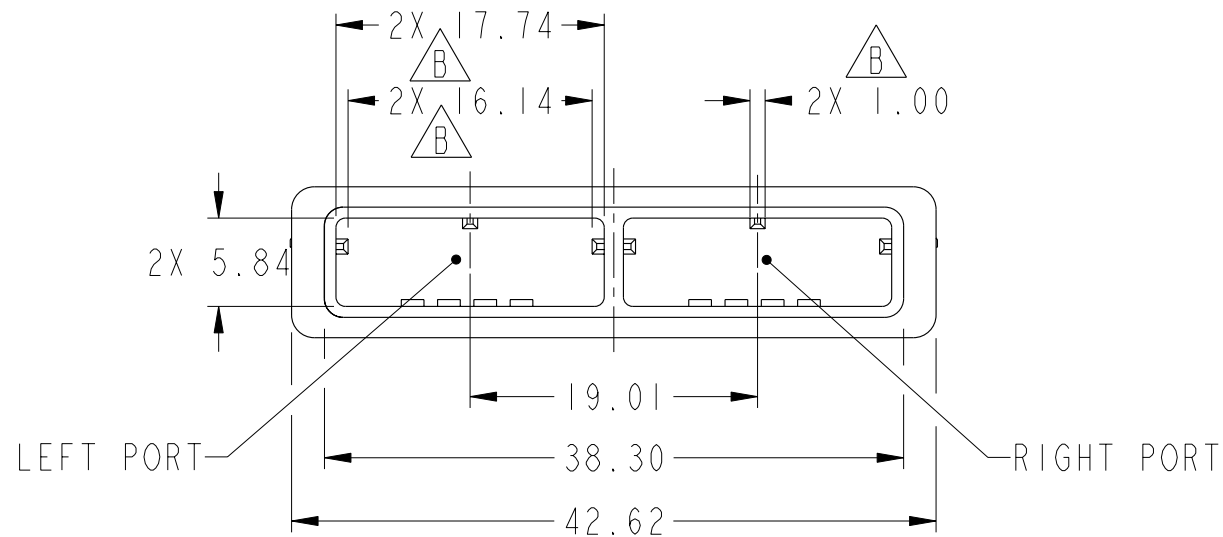


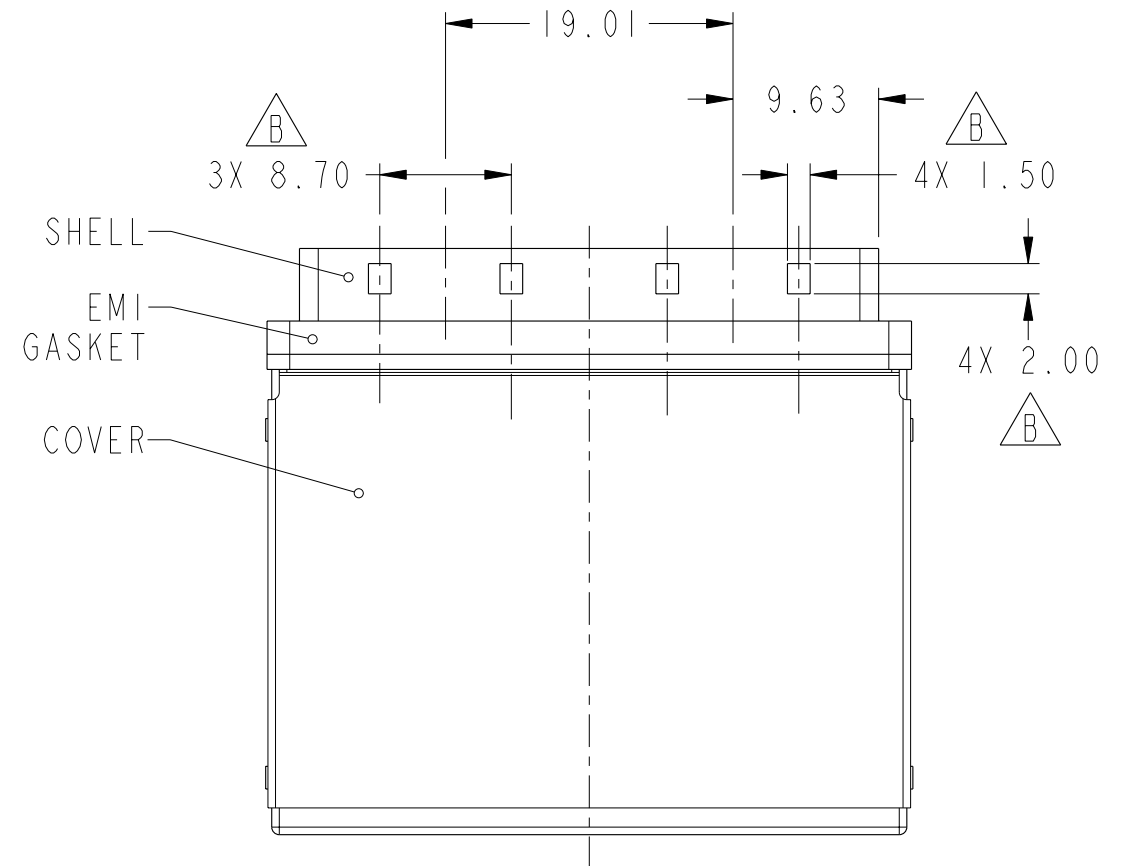
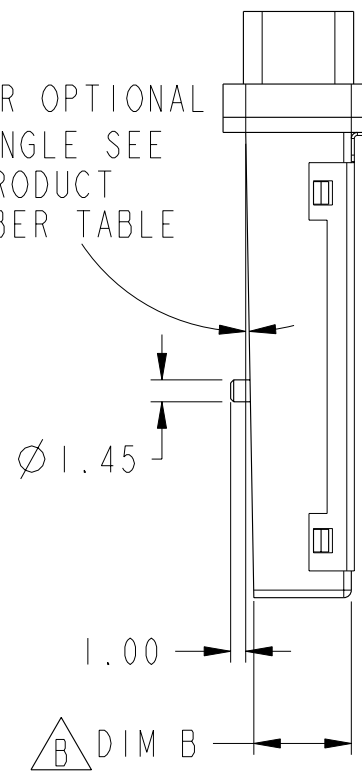


Copyright FCI.

PRODUCT NUMBER
SEE TABLE



0° OR OPTIONAL
1° ANGLE SEE
PRODUCT
NUMBER TABLE

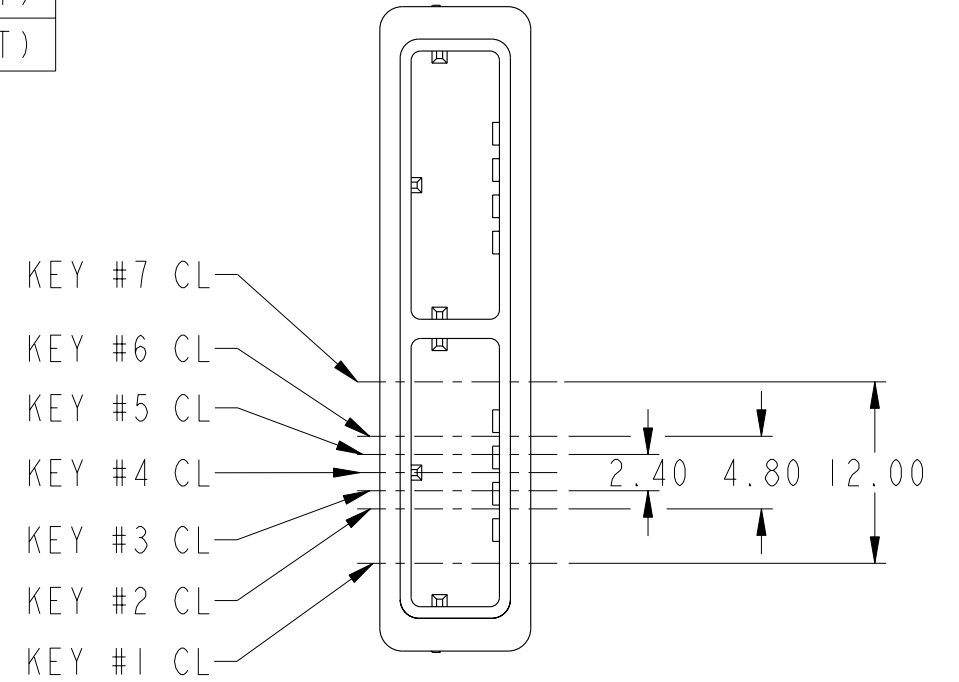
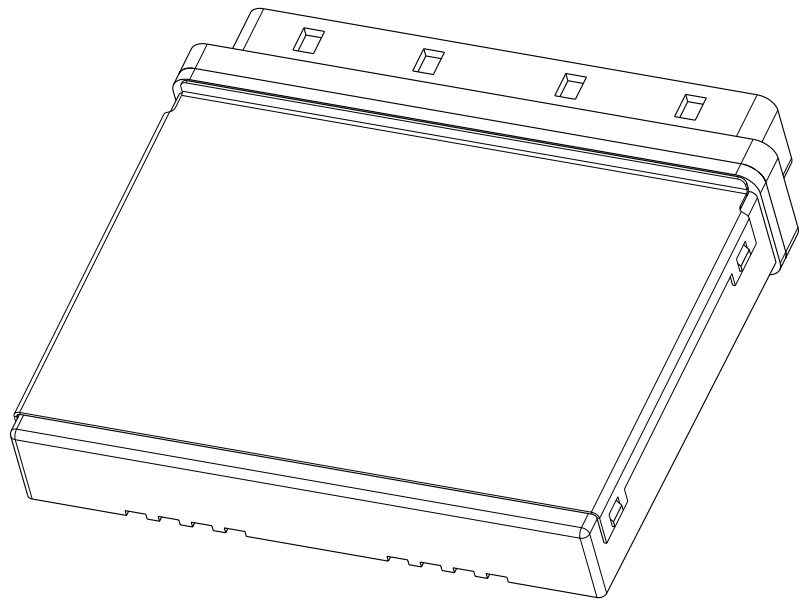
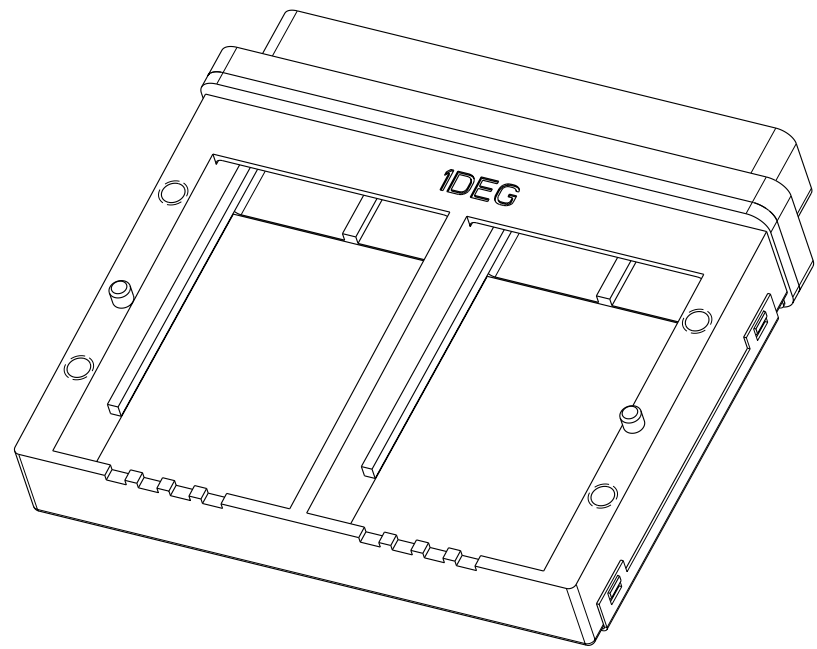


rev	ecn no	dr	date
A	V09-0420	RE	2009-08-20
B	V09-0550	MRG	2009-11-20
-	-	-	-
-	-	-	-
-	-	-	-
-	-	-	-

www.fciconnect.com			surface ASME Y14.5		- / ASME Y14.5		tolerance std ASME Y14.5		- projection 			
			TOLERANCES UNLESS OTHERWISE SPECIFIED									
Dr	S. MANOHARAN	2009-03-25	ANGULAR	LINEAR	0.X		±0.10		size A3	Scale 1:1		
Eng	J. SHUEY	2009-03-25			0.XX		±0.05					
Chr	J. SHUEY	2009-03-25			0°	±1°	0.XXX			±-		
Appr	J. SHUEY	2009-03-25	Product family					MINI-SAS		Spec ref		-
		title 1 X 2 GANGED CAGE MINI-SAS CONNECTOR				dwg no 10098872				Rev.		
										B		
		catalog no				-	CUSTOMER			sheet 1 of 3		

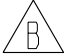
REV F - 2006-04-17

PRODUCT NUMBER	DIM A	DIM B	GASKET INCLUDED	STYLE	RAIL KEY POSITION
10098872-1102LF	25.09	6.97	YES	WITH COVER, 0 DEGREE	#4(LEFT), #4(RIGHT)
10098872-1302LF	24.96	6.45	YES	WITH COVER, 1 DEGREE	#4(LEFT), #4(RIGHT)



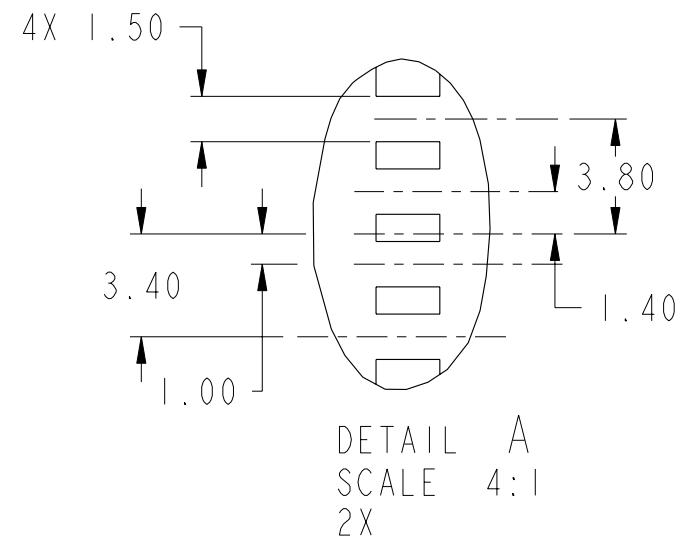
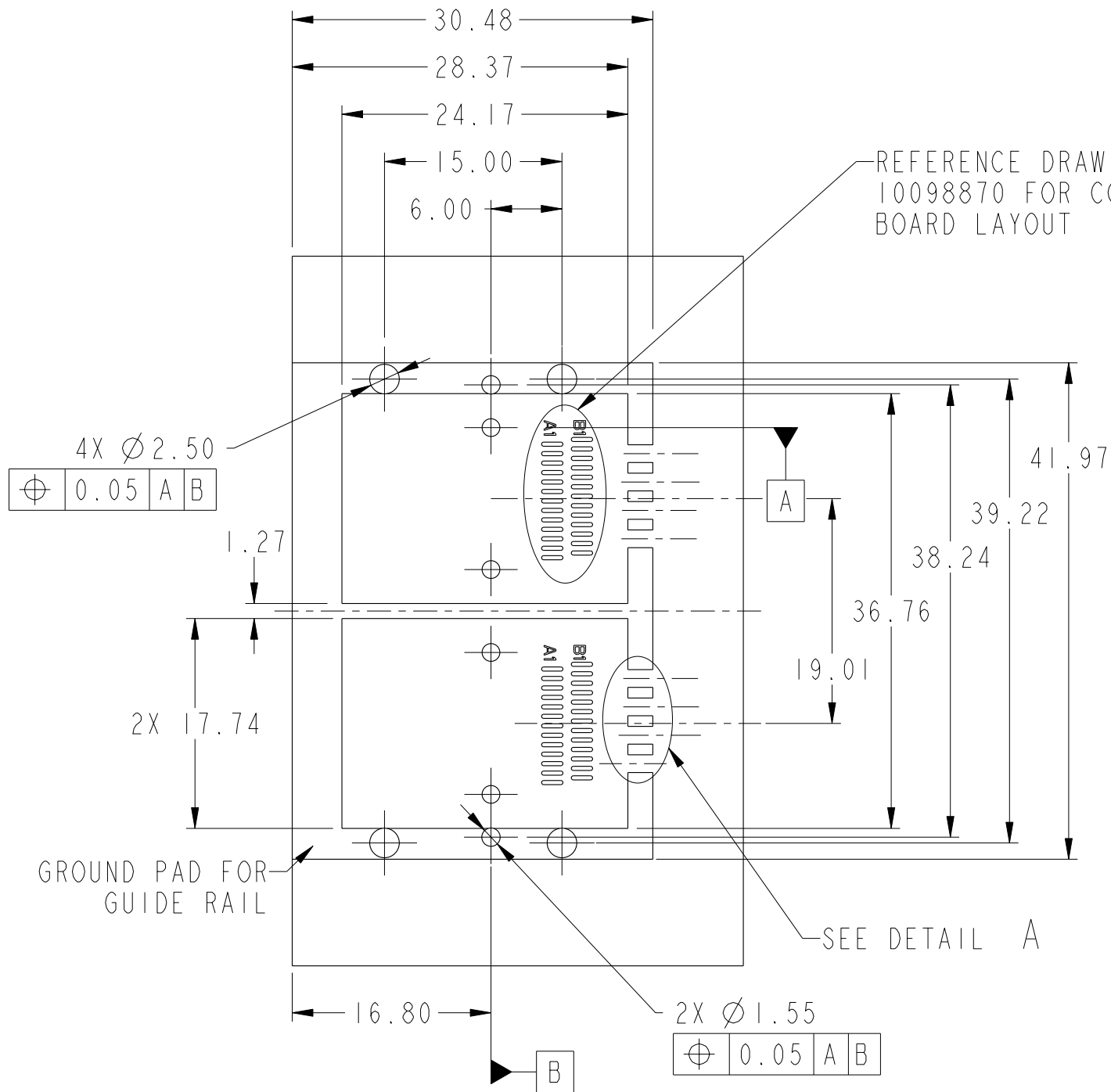
RAIL KEY DIMENSION


NOTES:

- MATERIAL:
SHIELD: ZINC ALLOY
PLATING: 3.81µm NICKEL MIN.
COVER: COPPER ALLOY
PLATING: 1.27µm NICKEL MIN.
EMI GASKET: FLEXIBLE CONDUCTIVE MATERIAL
- PRODUCT SPECIFICATION: GS-12-548
- APPLICATION SPECIFICATION: GS-20-124
- PRODUCT NUMBER 10098872-1302LF WILL BE MARKED WITH "1 DEG". PRODUCT NUMBER 10098872-1102LF WILL NOT HAVE A MARKING.
- PRODUCT MEETS EUROPEAN UNION DIRECTIVES AND OTHER COUNTRY REGULATIONS AS DESCRIBED IN GS-22-008.
- A  SYMBOL WILL BE NEXT TO ANY DIMENSION, VIEW, OR NOTE, WHICH HAS BEEN MODIFIED WITH THE CURRENT DRAWING REVISION.

	title		1 X 2 GANGED CAGE		dwg no	10098872		Rev.
			MINI-SAS CONNECTOR					B
	catalog no		-		CUSTOMER		sheet 2 of 3	

PRODUCT NUMBER
SEE TABLE



	title		1 X 2 GANGED CAGE		dwg no	10098872		Rev.	B
			MINI-SAS CONNECTOR						
	catalog no		-		CUSTOMER		sheet 3 of 3		

Mouser Electronics

Authorized Distributor

Click to View Pricing, Inventory, Delivery & Lifecycle Information:

[FCI / Amphenol:](#)

[10098872-1102LF](#) [10098872-1302LF](#)