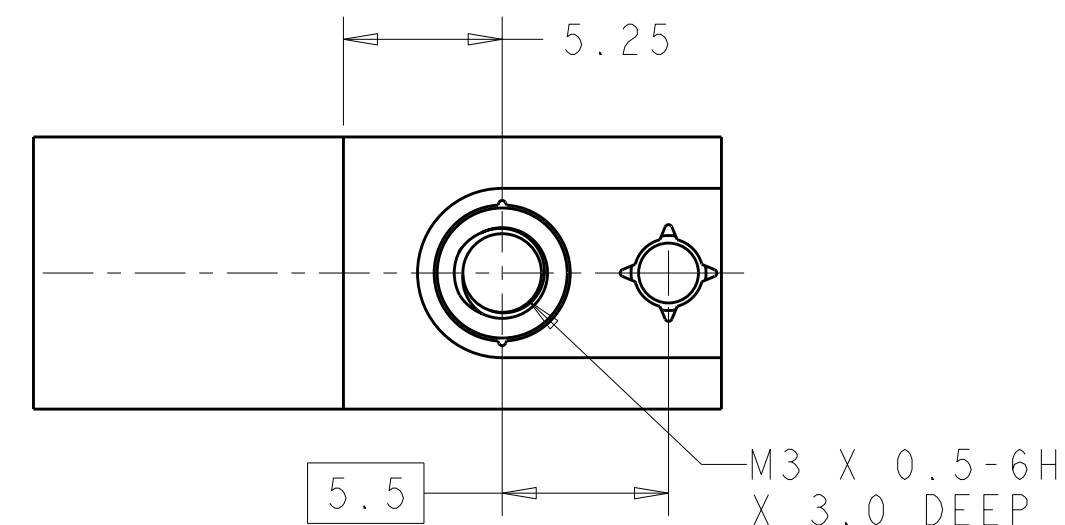
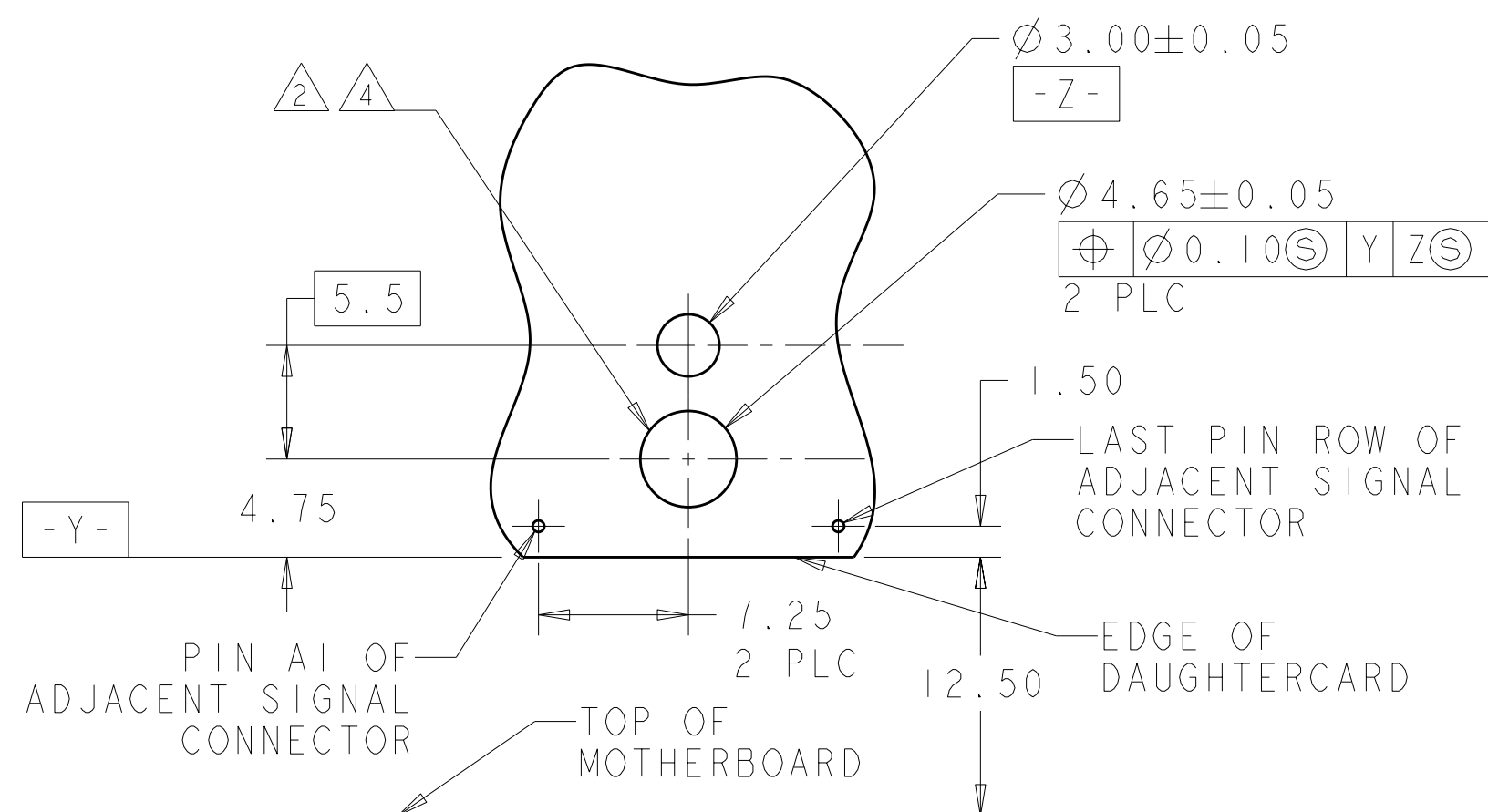
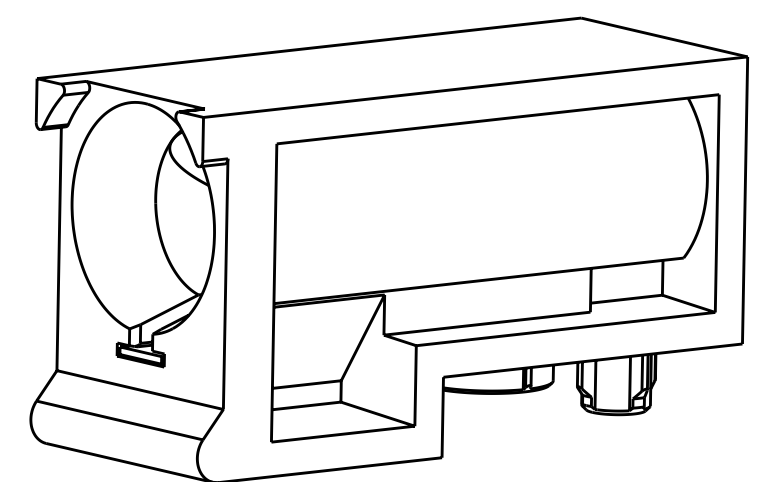
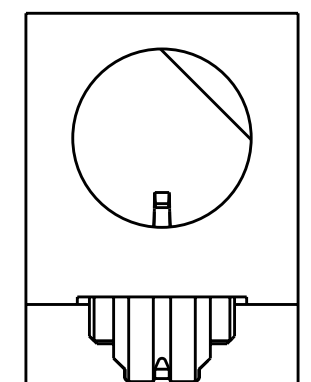
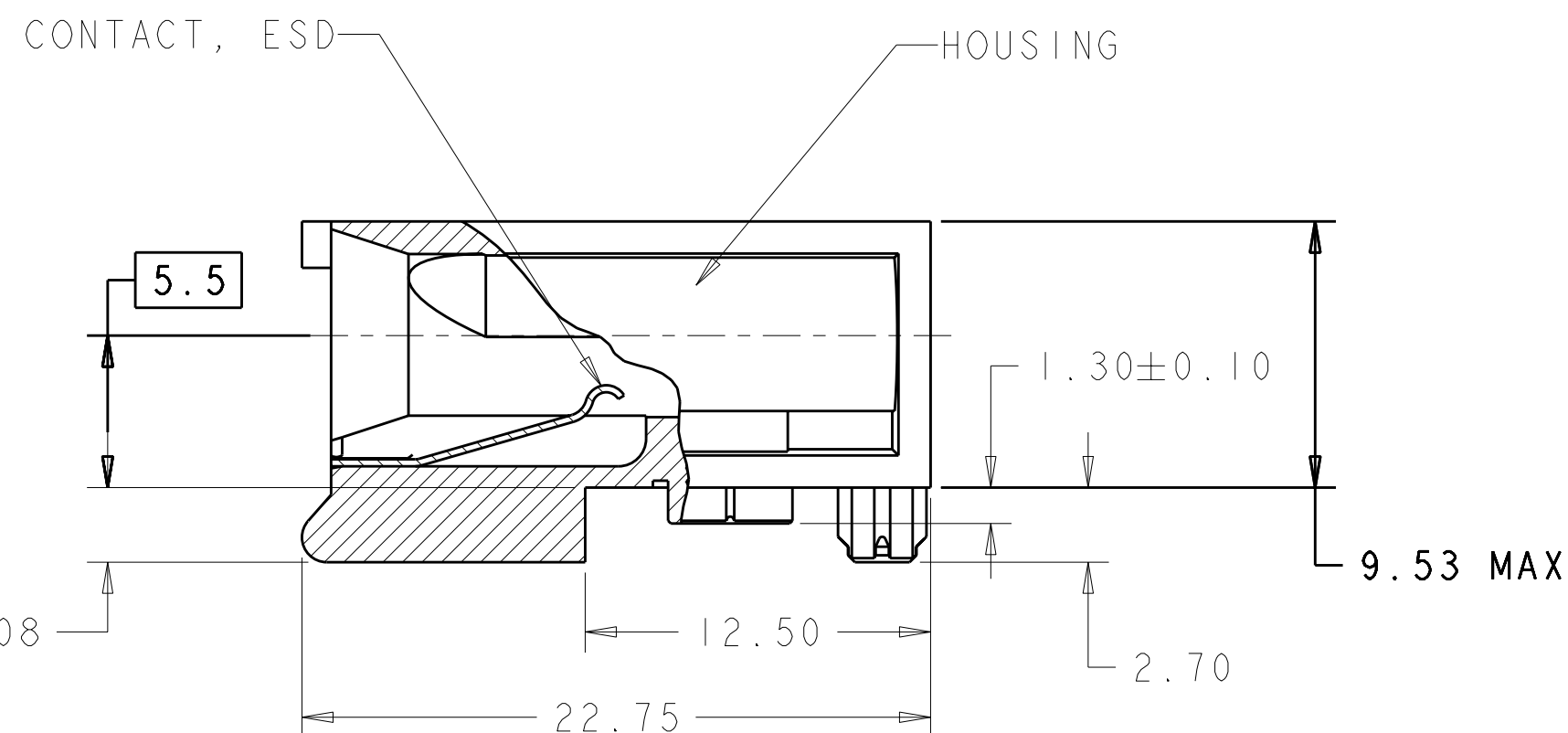
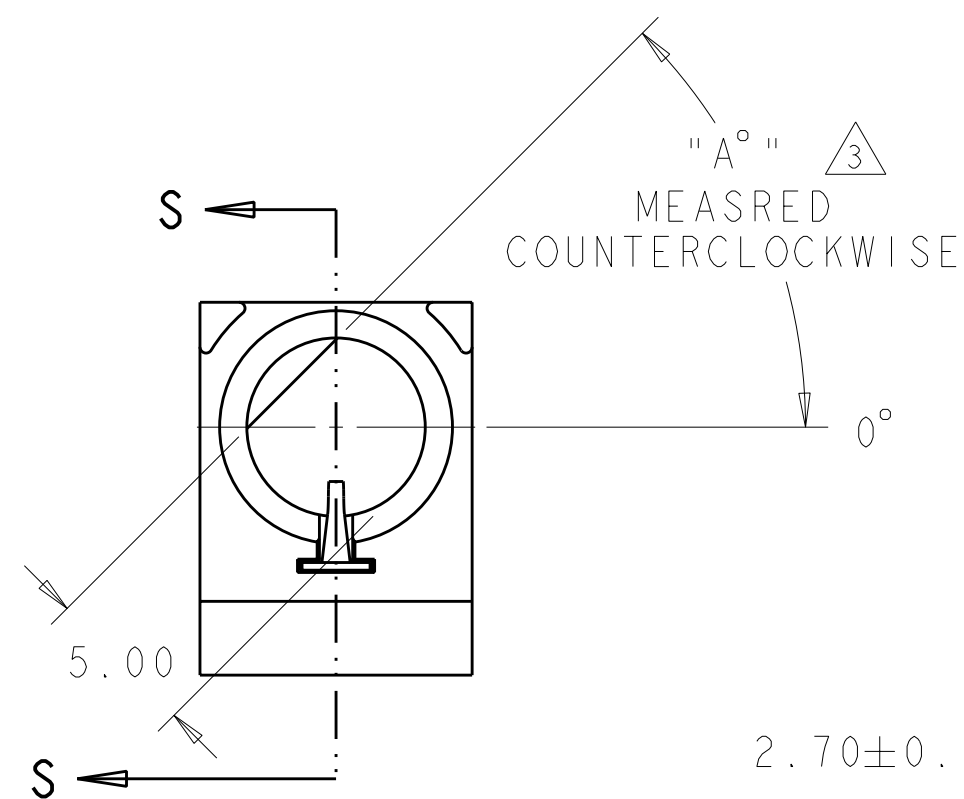

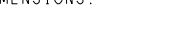




LOC	DIST	REVISIONS					
AD	00	P	LTR	DESCRIPTION	DATE	DWN	APVD
			A	RELEASED	04AUG2011	BC	AS

- 1 MATERIAL: HOUSING: ZINC ALLOY DIE CASTING,  
ZAMAK 3.  
CONTACT: PHOSPHOR BRONZE
- 2 HOLE FOR POSITIVE RETENTION SCREW.
- 3 DASH NUMBERS INDICATE KEY ORIENTATION  
(P/N 1-1410353-2 SHOWN ON DRAWING)
- 4 GROUND PAD  $\varnothing 5\text{mm}$  ON BOTH SIDE OF PCB.
- 5 FINISH: SILVER OVER NICKEL OVER COPPER
- 6 CONTACT FINISH:  $3.81\mu\text{m}$  MINIMUM SILVER IN CONTACT AREA  
 $1.27\mu\text{m}$  MINIMUM NICKEL ALL OVER
- 7 GUIDE MODULE W/O KEYING  
GUIDE PIN 1410354 SERIES MUST BE ORIENTED  
TO PROVIDE PROPER ESD PERFORMANCE



PRIMARY PCB LAYOUT  
CONNECTOR SIDE  
SCALE 3:1

THIS DRAWING IS A CONTROLLED DOCUMENT.		DWN B. CARBO 04AUG2011		 TE Connectivity	
		CHK A. SHARPE 04AUG2011			
DIMENSIONS: mm		TOLERANCES UNLESS OTHERWISE SPECIFIED:		NAME	
		APVD A. SHARPE 04AUG2011		ASSEMBLY, GUIDE MODULE/STANDOFF, RIGHT ANGLE, 20.3mm, DAUGHTERCARD, MULTIGIG	
		PRODUCT SPEC 108-2072			
		APPLICATION SPEC 114-13056		SIZE	CAGE CODE
MATERIAL		WEIGHT		DRAWING NO	
		-		114-13056	
FINISH		CUSTOMER DRAWING		SCALE	SHEET
				4.1	1 OF 1
				REV	A

# Mouser Electronics

Authorized Distributor

Click to View Pricing, Inventory, Delivery & Lifecycle Information:

[TE Connectivity:](#)

[1-1410353-2](#)