



FCIconnect.com

Copyright FCI

PRODUCT NUMBER
73327-XXXLF

PLATING OPTION
1= GXT 0.76 μm
3= GOLD 0.76 μm
5= GOLD 1.27 μm

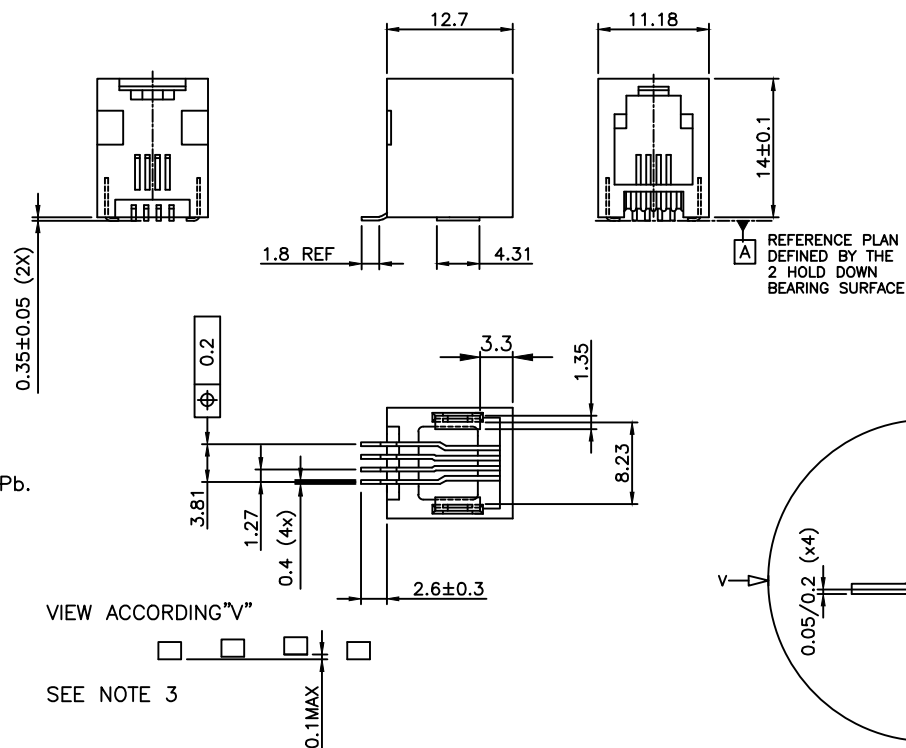
PACKAGE OPTION
1= TAPE ON REEL
2= TUBE
3= TAPE ON REEL
IN PLASTIC BAG

TERMINAL LOADING
1= FULLY LOADED

WHEN NEEDED, SUFFIX LETTER "LF"
INDICATES THE PRODUCT IS RoHS
COMPATIBLE, SEE NOTE 4.

NOTES:

- 1- MATERIAL: HOUSING: HIGH TEMP. PCT, COLOUR BLACK.
TERMINAL: PHOSPHOR BRONZE.
- 2 - PLATING: CONTACT AREA: SEE TABLE.
SOLDER TAIL : 90/10 SnPb 2 μm MIN.
WHEN SUFFIX "LF" IS REQUIRED, 2 μm MIN MATTE
TIN OVER 1.27 MIN Ni IS SUPPLIED INSTEAD OF SnPb.
NO RAW EDGES EXCEPT SOLDER TAIL TIPS
- 3 - SOLDER TAILS COPLANARITY : 0.1 mm
- 4 - RoHS COMPATIBLE PRODUCT SPECIFICATIONS
 - a - PLATING:
 - "LF" MEANS THE PRODUCT IS LEAD-FREE,
2 μm MINIMUM MATTE TIN OVER 1.27 μm
MINIMUM NICKEL UNDERPLATE.
 - b - MANUFACTURING PROCESS COMPATIBILITY
 - THE HOUSING WILL WITHSTAND EXPOSURE TO
245°C PEAK TEMPERATURE FOR 30 SECONDS
MAX IN A CONVECTION, INFRA-RED OR VAPOR
PHASE OR REFLOW OVEN.
 - c - LABELING:
 - MEETS PACKAGING SPECS AS PER GS-14-920
 - d - LEGAL STATEMENT: SEE GS-47-0004
- 5 - PACKAGING FOR OPTION 3 : EACH REEL IS WRAPPED INTO A PLASTIC BAG
TO PROTECT FROM MOISTURE DURING STACKING TIME.



CUSTOMER COPY FOR REFERENCE ONLY

mat'l. code				surface	tolerance	projection	product family
				ISO 1302	ISO 406 ISO 1101		MOD JACK
ltr	ecn no	dr	date	tolerances unless otherwise specified			title
H	F05-0247	DLE	05.09.12	angles	linear		SMT RA JACK
J	F06-0240	DLE	06.07.18	±2'	F09-0070		4 POS NARROW INSIDE
K	F09-0070	LSA	02.07.21			scale 2:1	
L	B-15798	JFA	13.09.09	dr	D LEGRAND	04.10.18	dwg no
M	F-21888	AMA	15.09.09	engr	P NIZZI	04.10.18	sheet 1 of 3
				chr	D LEGRAND	04.10.18	size
G	F04-0363	DLE	04.10.18	appd	P NZ	04.10.18	73327
sheet	revision	M	F	B			A3
index	sheet	1	2	3			type
							CUSTOMER Drawing

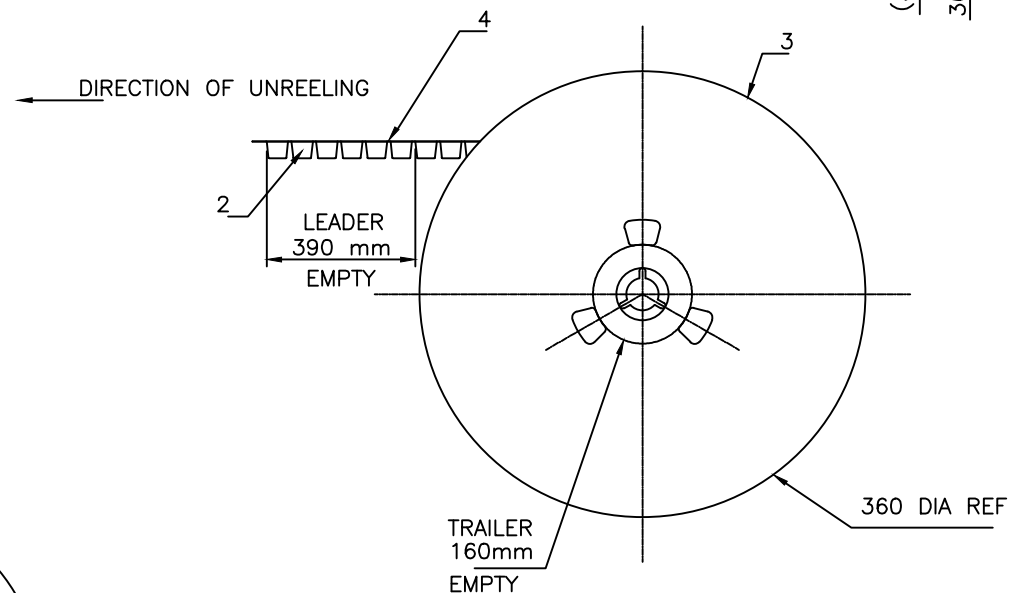
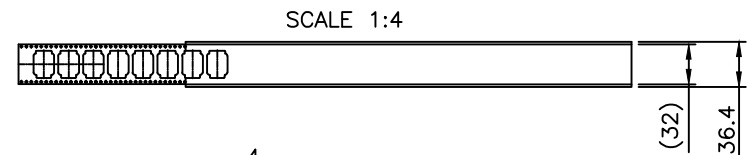
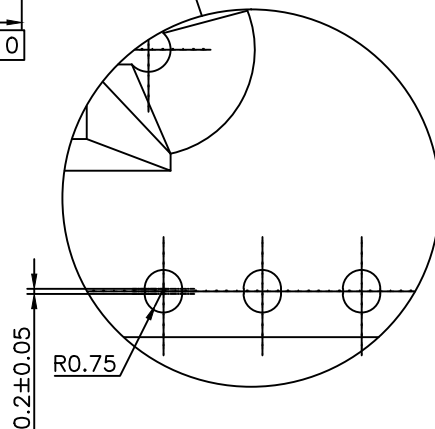
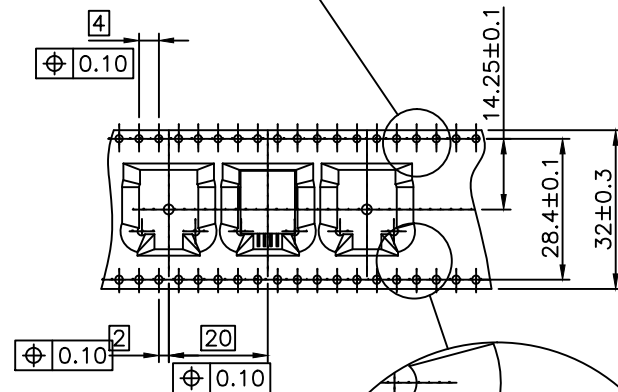
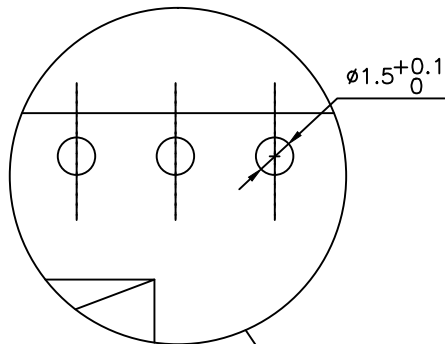
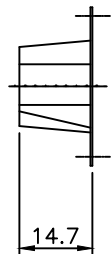


FCIconnect.com

Copyright FCI

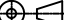


form: A3

PRODUCT NUMBER
SEE SHEET 1



1- IN ACCORDANCE WITH EIA-481 AND IEC 296-3

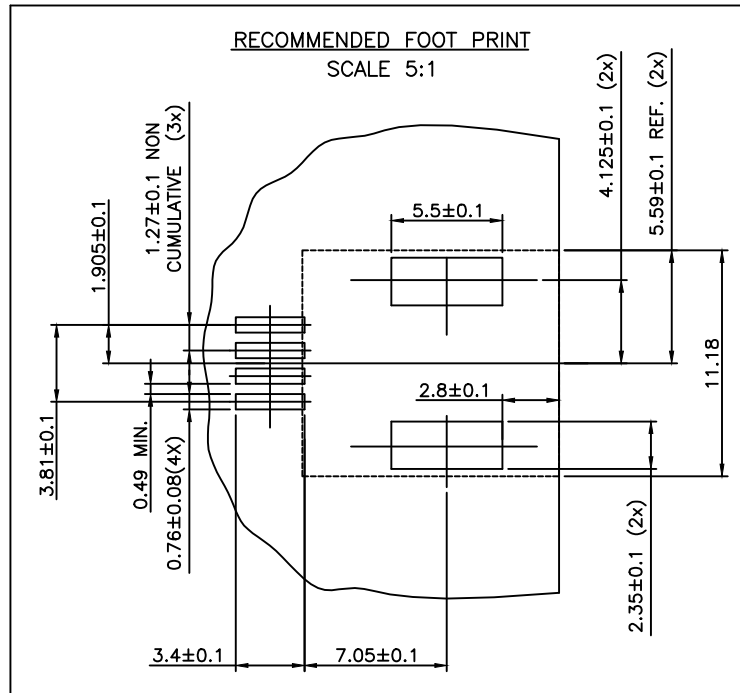
CUSTOMER COPY FOR REFERENCE ONLY

mat'l. code				surface ISO 1302 ✓		tolerance ISO 406 ISO 1101		projection 		product family MOD-JACK					
ltr	ecr no	dr	date	tolerances unless otherwise specified				title		SMT RA JACK 4 POS. NARROW INSIDE					
E	F90120	DLE	99.02.01	angles		linear		mm 							
F	F06-0240	DLE	06.07.18					scale 1:1							
				dr	D LEGRAND		06.07.18				dwg no		sheet 2 of 3		size
				enr	P NIZZI		06.07.18				73327				A3
				chr	D LE		06.07.18								
				appd	P NZ		06.07.18								
sheet index		revision sheet								type		CUSTOMER Drawing			



FCIconnect.com

Copyright FCI



CUSTOMER COPY FOR REFERENCE ONLY

mat'l. code				surface	tolerance	projection	product family	
				ISO 1302	ISO 406 ISO 1101		MOD JACK	
ltr	ecr no	dr	date	tolerances unless otherwise specified			title	
A	F04-0363	DLE	04.10.18	angles	±0.13	mm	SMT RA JACK	
B	F06-0240	DLE	06.07.18	linear		scale 2:1	4 POS NARROW INSIDE	
				±2'				
		dr	D LEGRAND	04.10.18			dwg no	
		engr	P NIZZI	04.10.18			sheet 3 of - size	
		chr	D LEGRAND	04.10.18			73327	
		appd	P NZ	04.10.18			type	
							CUSTOMER Drawing	
sheet index	revision	sheet						

form: A4

Mouser Electronics

Authorized Distributor

Click to View Pricing, Inventory, Delivery & Lifecycle Information:

[FCI / Amphenol:](#)

[73327-111LF](#) [73327-311LF](#) [73327-131LF](#)