

General Specifications

Part Number: SK14DGMG01

Electrical Capacity (Resistive Load)

Logic Level: 0.4VA maximum @ 28V AC/DC maximum
(Applicable Range 0.1mA ~ 0.1A @ 20mV ~ 28V)

Other Ratings

Contact Resistance: 100 milliohms maximum
Insulation Resistance: 100 megohms minimum @ 500V DC
Dielectric Strength: 500V AC minimum between contacts for 1 minute minimum
Mechanical Life: 30,000 operations minimum
Electrical Life: 10,000 operations minimum
Static Capability: Withstands 15 kilovolts ESD
Nominal Operating Force: 0.02Nm (0.18 lb•in)
Contact Timing: Break-before-make
Angle of Throw: 45°

Materials & Finishes

Key: Brass alloy with bright nickel plating and ABS resin handle
Housing: Polyamide
Base: Glass fiber reinforced polyamide
Rotor: Glass fiber reinforced polyamide
Tumbler Plate: Brass
Movable Contacts: Beryllium copper with gold plating
Stationary Contacts: Brass with gold plating
Switch Terminals: Brass with gold plating

Environmental Data

Operating Temperature Range: -40°C through +85°C (-40°F through +185°F)
Humidity: 90 ~ 95% humidity for 240 hours @ 60°C (140°F)
Vibration: 10 ~ 55Hz with peak-to-peak amplitude of 1.5mm traversing the frequency range & returning in 1 minute; 3 right angled directions for 2 hours
Shock: 50G (490m/s²) acceleration (tested in 6 right angled directions, with 5 shocks in each direction)

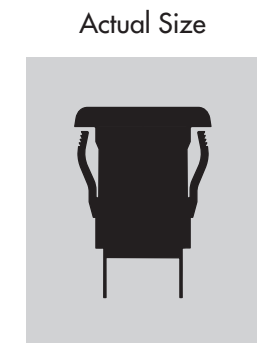
PCB Processing

Soldering: Manual Soldering: lead-free, see profile below. Do not exceed these specifications.
Cleaning: Hand clean locally using alcohol based solution.

Solder Iron Tip Temperature 370°C
 Time on Terminal 4 seconds
 Cycles 2

Standards & Certifications

These devices have not been tested for UL recognition or CSA certification.
 These devices are designed for use in a low-voltage, low-current, logic-level circuit.
 When used as intended in a logic-level circuit, the results do not produce hazardous energy.



- Toggle
- Rockers
- Pushbuttons
- Illuminated PB
- Programmable
- F** Keylocks
- Rotaries
- Slides
- Tactiles
- Tilt
- Touch
- Indicators
- Accessories
- Supplement

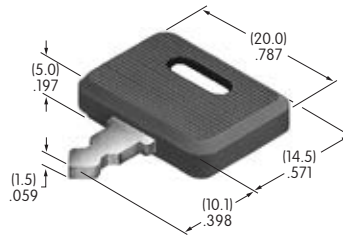
POLES, CIRCUITS & KEY-REMOVABLE POSITIONS

Pole & Throw	Key Positions			Connected Terminals (Terminal numbers are on switch)			Schematic	⊙ = Key Removable √ = Maximum Arc
	Pos 1	Pos 2	Pos 3	Pos 1	Pos 2	Pos 3		
SP3T	ON	ON	ON	C-1	C-2	C-3		

KEY

AT4080 Standard Antistatic Plastic Handle

Material:
Brass Alloy with Bright Nickel Plating
& ABS Resin Handle



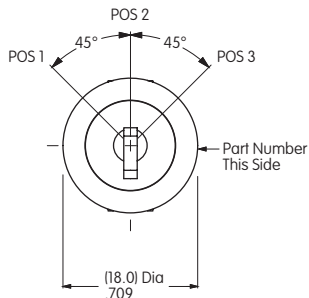
2 keys supplied with each switch

TYPICAL SWITCH DIMENSIONS

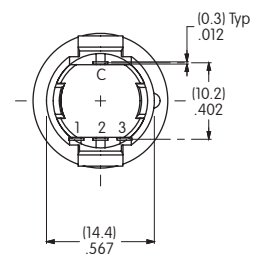
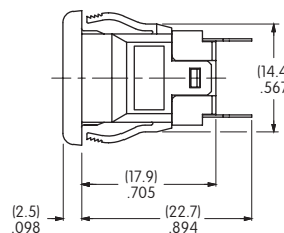
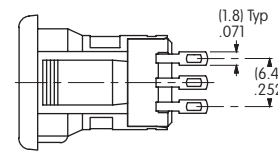
Antistatic Snap-in • Flat Key



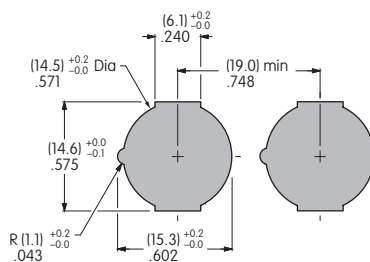
SK14DGMG01



Single Pole Three Throw



PANEL CUTOUT



Panel Thickness Range
.039" ~ .079"
(1.0mm ~ 2.0mm)

Toggles
 Rockers
 Pushbuttons
 Illuminated PB
 Programmable
 Keylocks F
 Rotaries
 Slides
 Tactiles
 Tilt
 Touch
 Indicators
 Accessories
 Supplement

Mouser Electronics

Authorized Distributor

Click to View Pricing, Inventory, Delivery & Lifecycle Information:

[NKK Switches:](#)

[SK14DGMG01](#)