

THIS DRAWING AND THE INFORMATION SET FORTH HEREON ARE THE PROPERTY OF TYCO ELECTRONICS CORPORATION AND ARE TO BE HELD IN TRUST AND CONFIDENCE. PUBLICATION, DUPLICATION, DISCLOSURE OR USE FOR ANY PURPOSE NOT EXPRESSLY AUTHORIZED IN WRITING BY TYCO ELECTRONICS CORPORATION IS PROHIBITED.

# REVISION

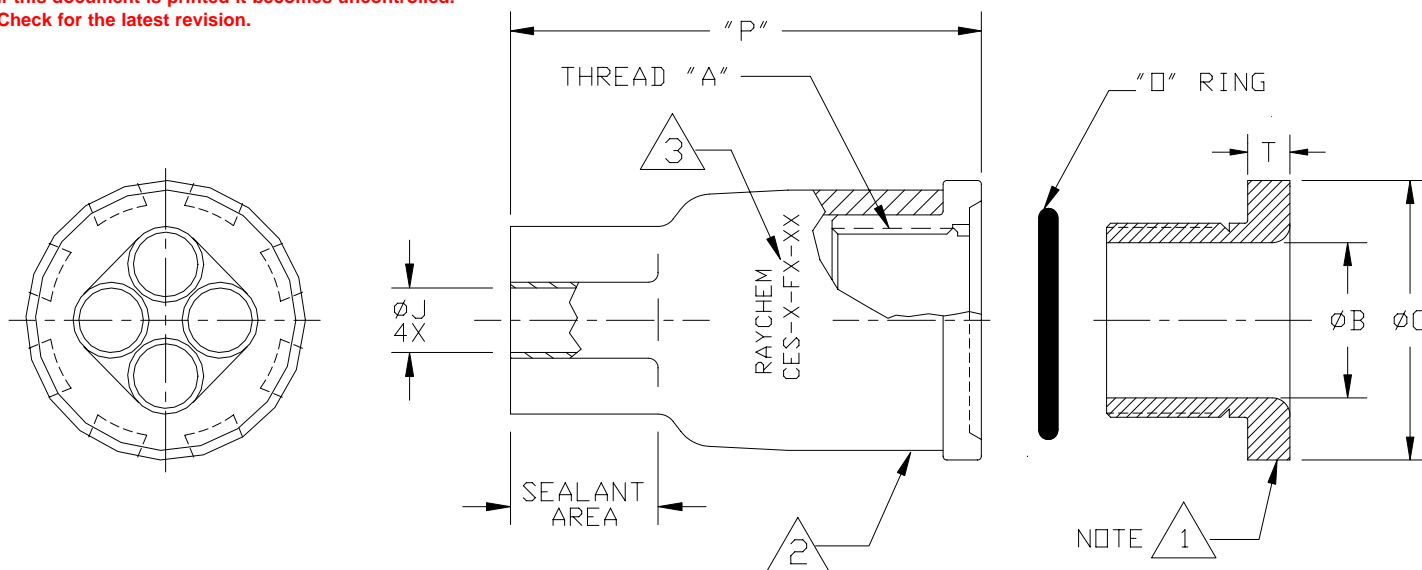
REV DESCRIPTION

DATE

D REVISED PER DCR MP03094

4/28/03

If this document is printed it becomes uncontrolled.  
Check for the latest revision.



PART NUMBER	"A" THREAD	ØB ±.02	ØC REF	ØJ		P REF REC	T REF	PANEL THK 4
				MIN EXP	MAX REC			
CES-2-F1A-XX	1-12 UNF	.75 [19,05]	1.41 [35,82]	.40 [10,16]	.11 [2,79]	2.25 [57,15]	.21 [5,33]	1/4 [6,35]
CES-2-F1-XX	1-12 UNF	.75 [19,05]	1.41 [35,82]	.60 [15,24]	.17 [4,31]	2.75 [69,85]	.21 [5,33]	1/4 [6,35]
CES-3-F1-XX	1 3/8-12 UNF	1.10 [27,94]	1.91 [48,52]	.60 [15,24]	.17 [4,31]	2.75 [69,85]	.31 [7,88]	1/4 [6,35]
CES-4-F1-XX	2-8 UN	1.56 [39,62]	2.72 [69,09]	.90 [22,86]	.30 [7,62]	3.15 [80,01]	.31 [7,88]	3/8 [9,65]
CES-5-F4-XX	3 3/8-8 UN	2.90 [73,66]	4.10 [104,14]	1.25 [31,75]	.50 [12,7]	4.50 [114,30]	.31 [7,88]	1/2 [12,7]

## NOTES:

1. THE LAST "XX" IN THE PART NUMBER DESIGNATES MATERIAL AS SHOWN BELOW:  
"AL": ALUMINUM 6061 T-6 WITH FINISH OF HARD ANODIZE PER MIL-A-8625, TYPE III, CLASS 2, DYED BLACK.  
"SS": STAINLESS STEEL TYPE 316, WITH FINISH OF PASSIVATE PER QQ-P-35, OR MIL-S-5002 FOR STANDARD BLACK NYLON MATERIAL, OMIT THE LAST "XX" IN THE PART NUMBER.
2. HEAT SHRINKABLE BOOT MATERIAL IN ACCORDANCE WITH -3 POLYOLEFIN
3. PART TO BE MARKED AS SHOWN, REPLACE X'S WITH APPROPRIATE CHARACTERS. (IE: CES-3-F1-AL).
4. THIS PART IS DESIGNED TO FIT THROUGH A BULKHEAD OR PANEL WITH A MAXIMUM WALL THICKNESS AS INDICATED IN TABLE.
5. FACTORY APPLIED HOT MELT ADHESIVE IS STANDARD.

## SPECIFICATION CONTROL DRAWING

tyco

Tyco Electronics Corporation  
300 Constitution Drive  
Menlo Park, CA, USA 94025

Product Brand:

Raychem

TITLE

CABLE ENTRY SEALS  
4 ENTRY, STANDARD

SIZE

A

CODE IDENT. NO.

06090

DWG. NO.

CES-X-FX-XX

DO NOT SCALE THIS DRAWING

SHEET 1 OF 1

# Mouser Electronics

Authorized Distributor

Click to View Pricing, Inventory, Delivery & Lifecycle Information:

[TE Connectivity:](#)

[CES-2-F1](#)