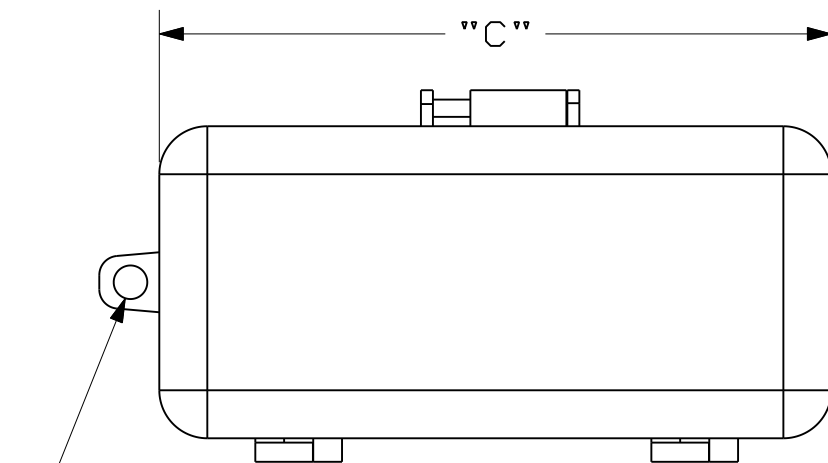
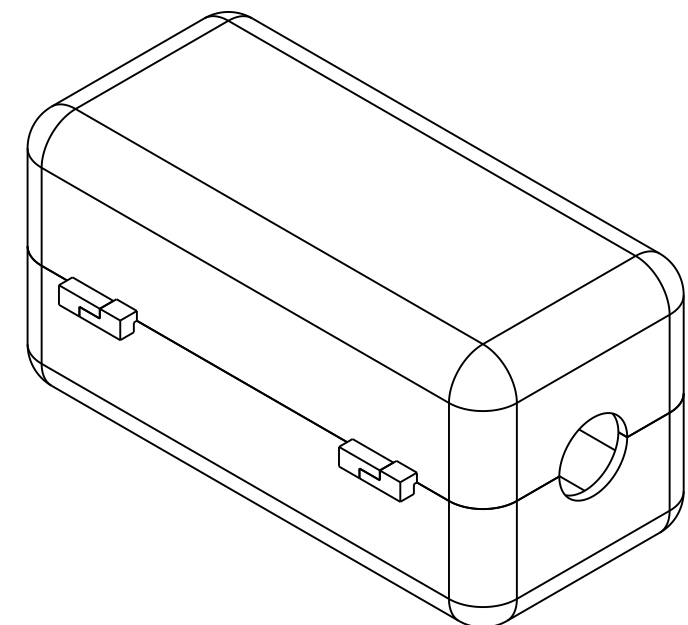
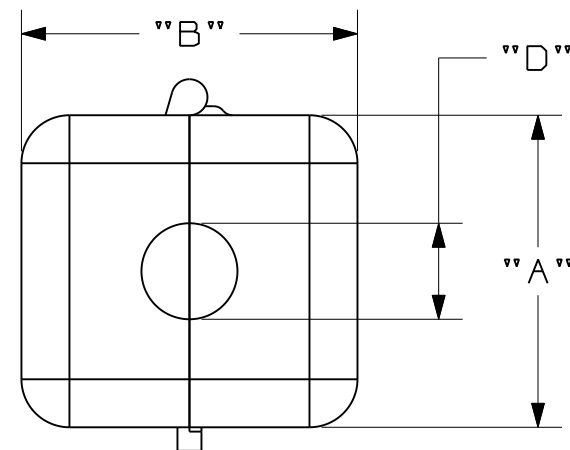


THIS COPY IS PROVIDED ON A RESTRICTED BASIS AND IS NOT TO BE USED IN ANY WAY DETRIMENTAL TO THE INTERESTS OF PANDUIT CORP.

PART NUMBER	DESCRIPTION	INSIDE DIM. IN. (mm)	"A"	"B"	"C"	DIA. DIM. IN (mm) "D"	STANDARD PKG.
PSL-CL110	LOCKOUT FOR 120 VOLT AC CORD	1.73 X 1.73 X 3.23 [44.0 X 44.0 X 82.0]	2.00 [50.8]	2.00 [50.8]	3.5 [88.9]	0.50 [12.7]	1


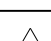


- HOLES ACCOMMODATE
LOCK WITH .35" [8.8mm] DIA. 
OR SMALLER SHACKLES.



NOTES:
1. MILLIMETERS
SHOWN IN [].



											PANDUIT CORP TINLEY PARK, ILLINOIS				
											PSL-CL110 				
3	1/31/08	RVU		REMOVE P/N. PSL-CL480. REPLACE PSL CL CORD LOCKOUT TO PSL-CL110 ON TITLE AREA. Ø 35" (8.9mm) WAS Ø 38" (10mm). REMOVED NOTE 2.	5274	R					UNLESS OTHERWISE SPECIFIED, DIMENSIONAL TOLERANCES ARE: (.X) ± .050 (.XXX) ± .015 (.XX) ± .032 ANGLES ±		UNLESS OTHERWISE SPECIFIED, ALL DIMENSIONS ARE GIVEN IN INCHES, THIRD ANGLE PROJECTION		
2	1-24-06	RVU	DWY	ADDED PANTONE COLOR #.	4335	R									
1	9-8-05	RVU	DWY	PART NO. IN TITLE BLCOK WAS PSL-CL.	4167	R					DRAWN BY RVU	MAT'L: 		SCALE NTS	
R	9-10-03	RVU	DWY	DRAWING RELEASE	3399	R					DATE 9-10-03	POLYPROPYLENE, RED PANTONE PMS 186		DRAWING NO. C10095	
REV	DATE	BY	CHK	DESCRIPTION	ECN	- R	CUST	SUP		CHK'D			DWG B SIZE		

Mouser Electronics

Authorized Distributor

Click to View Pricing, Inventory, Delivery & Lifecycle Information:

Panduit:

PSL-CL110