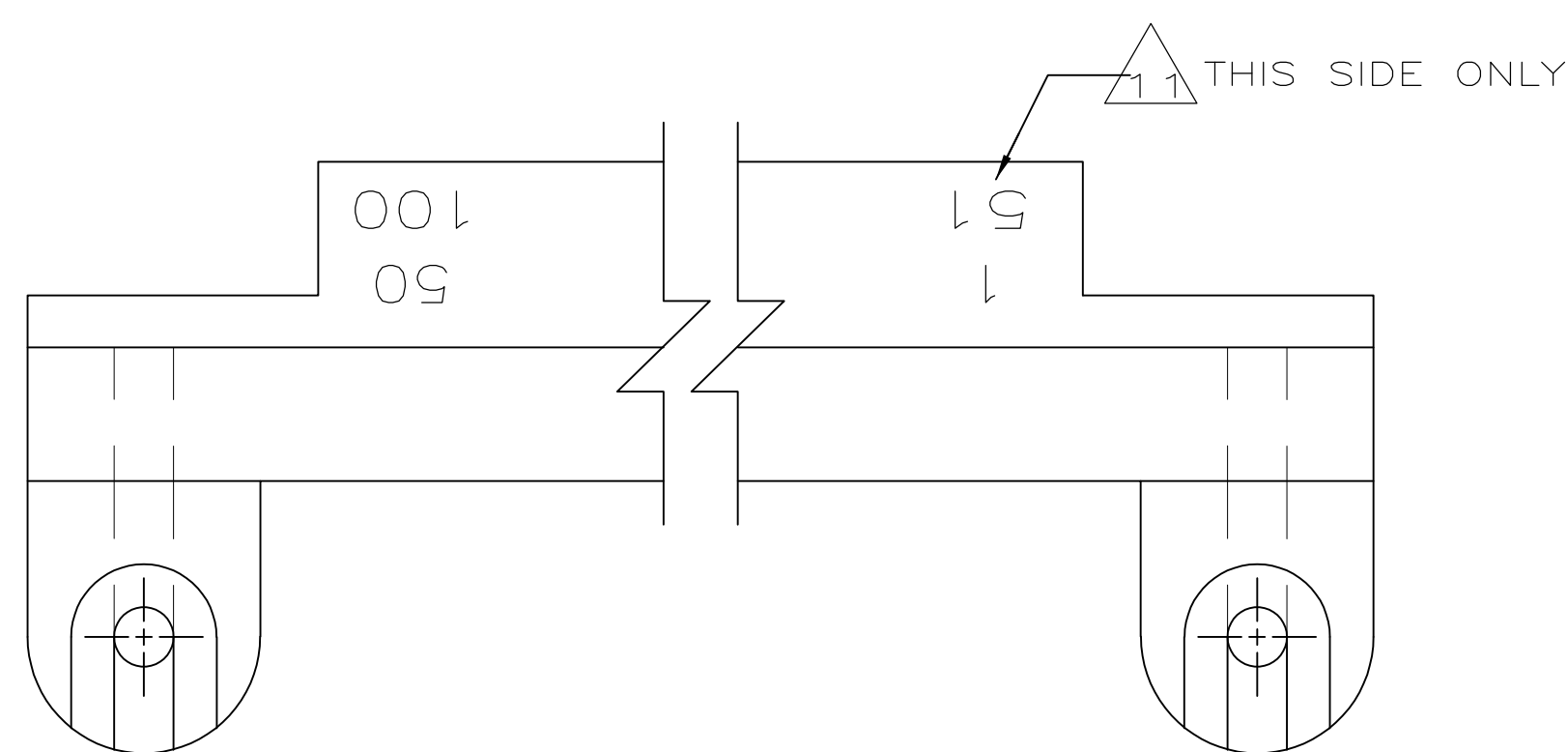
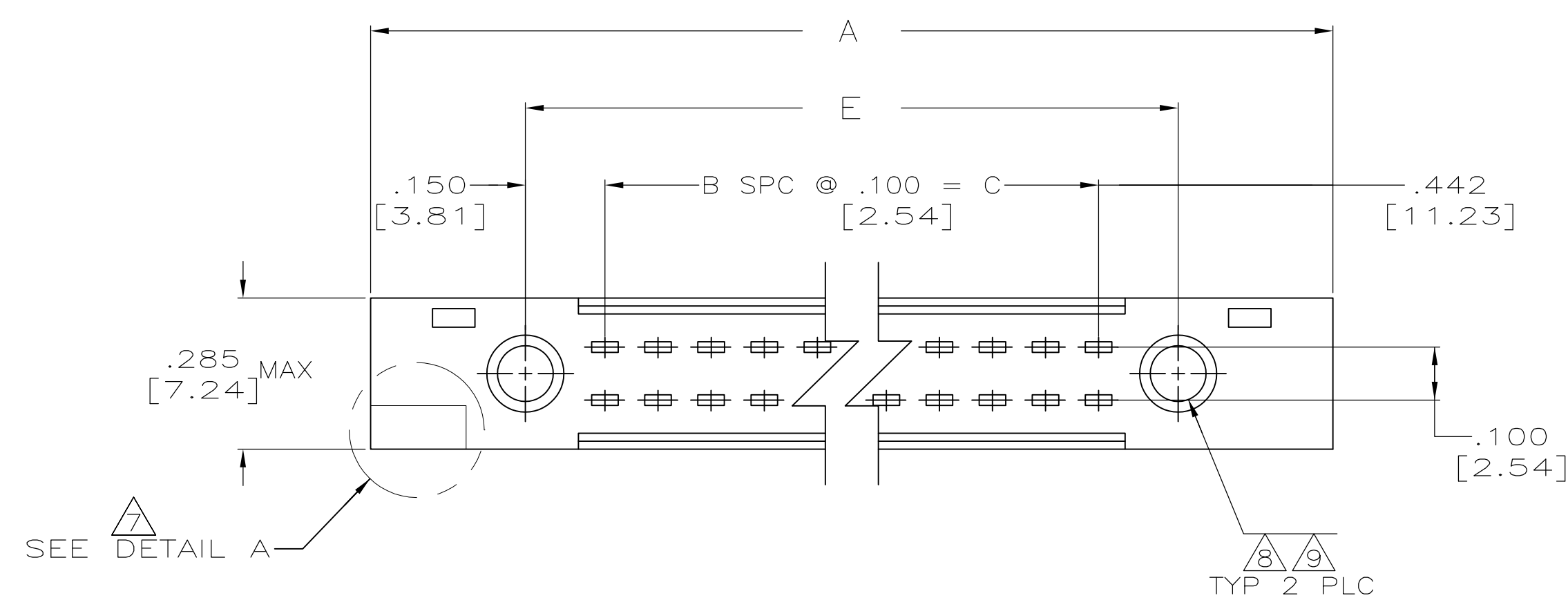
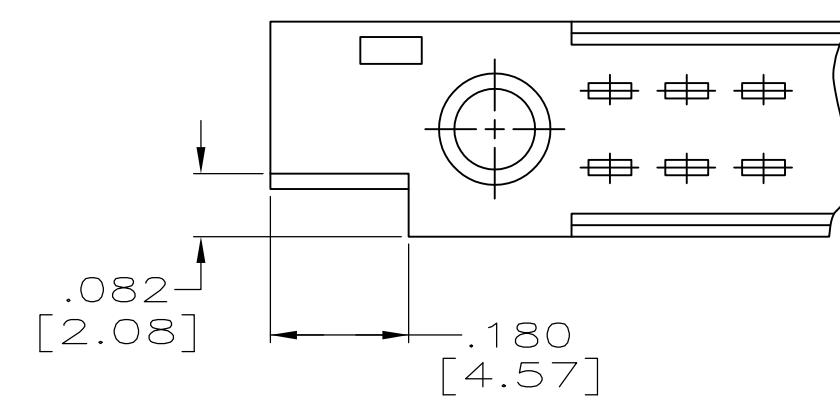
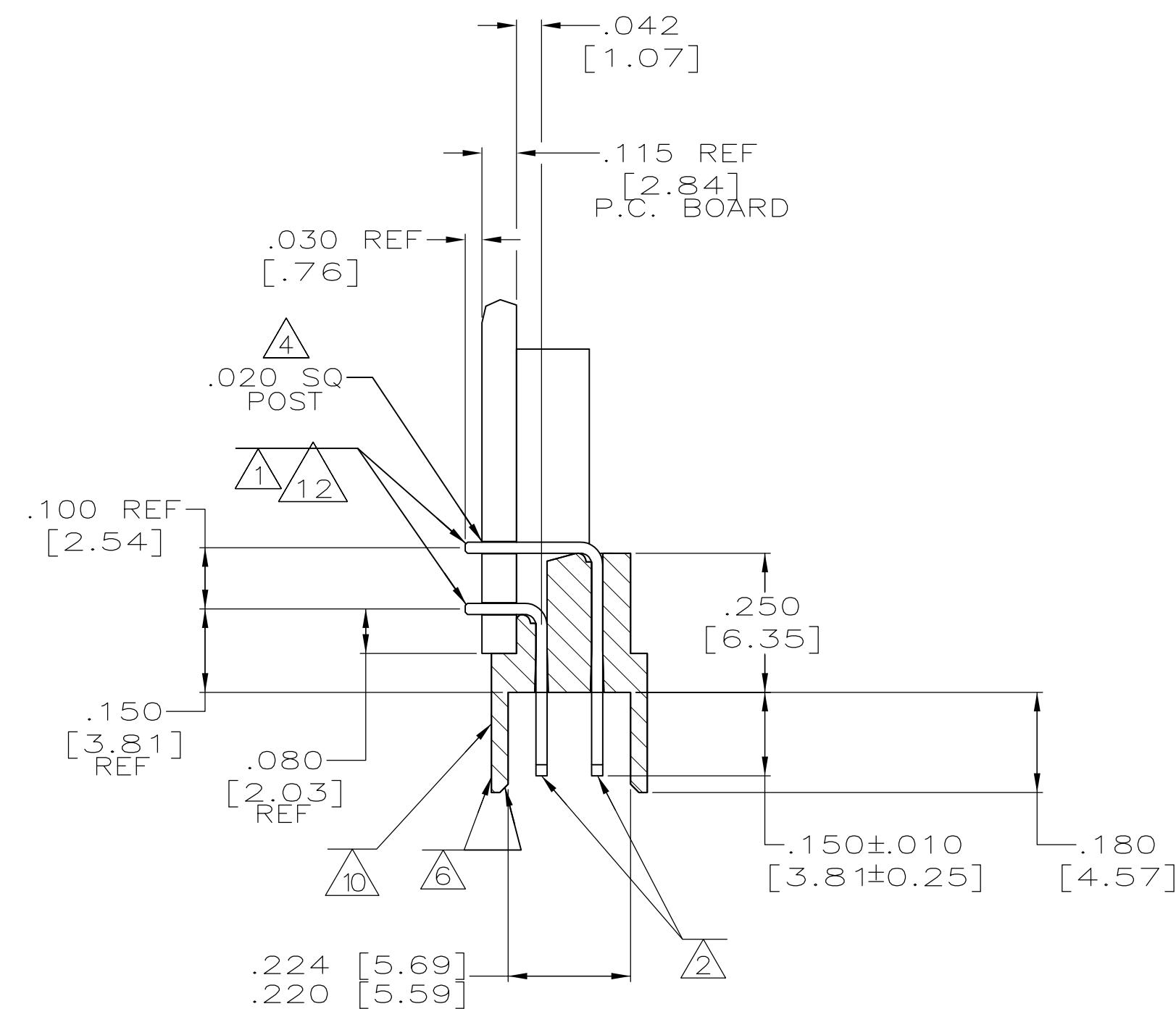
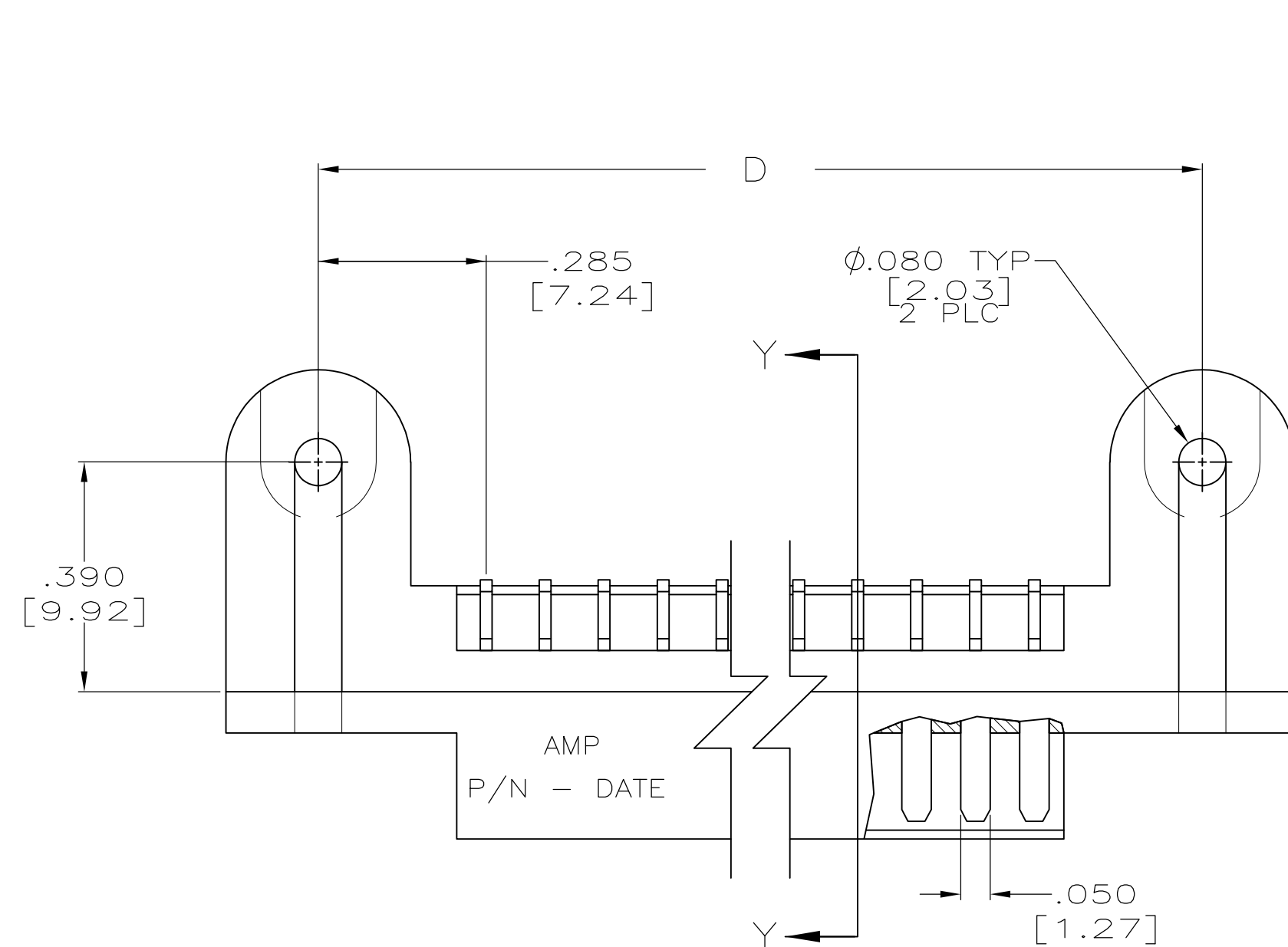
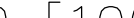



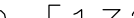
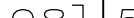




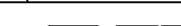
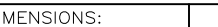



LOC	DIST	REVISIONS					
		P	LTR	DESCRIPTION	DATE	DWN	APYD
			G	REV PER ECO-11-024750	20DEC11	PY	DE



- 1 GOLD PLATING PER MIL-G-45204, .000010 MIN THK OVER  
NICKEL PLATING PER QQ-N-290 .000100 MIN THK.
- 2 GOLD PLATING PER MIL-G-45204, .000050 MIN THK OVER  
NICKEL PLATING PER QQ-N-290 .000100 MIN THK.
- 3 HOUSING MATERIAL: GLASS FILLED POLYETHERIMIDE  
CONTACT MATERIAL: PHOS BRONZE PER QQ-B-750, TEMPER 2
- 4 PLATED HOLE SIZE OF .029±.002 DIA WILL PROVIDE AN INTERFERENCE  
FIT SUITABLE FOR AUTOMATIC SOLDER OPERATIONS. FOR HAND SOLDER,  
THE A HOLE AS SPECIFIED PER AMP SPEC 106-14018 OR 106-14019  
AS APPLICABLE IS RECOMMENDED.
5. MOUNTING HARDWARE; SCREW, BIND HD MACHINE (1-72 UNF X .250)  
NUT, HEX MACHINE SCREW (1-72 UNF).
- 6 THIS SURFACE MUST BE PROTECTED FROM DIRECT CONTACT WITH THE  
SOLDER WAVE. A SHIELD MACHINED FROM REINFORCED PHENOLIC HAS  
PROVEN SATISFACTORY DURING PROTOTYPE WORK CONDUCTED BY AMP  
INC. DUE TO THE VARIETY OF APPLICATIONS, AMP RECOMMENDS  
EXPERIMENTATION BY THE CUSTOMER TO DETERMINE THE MOST PRACTICAL  
METHOD OF PROTECTION FOR SPECIFIC APPLICATIONS.
- 7 CUTOUT ON BOTH ENDS OF HOUSING IS APPLICABLE  
ON -3 & -5 ONLY.
- 8 THESE MOUNTING HOLES ARE MADE TO ACCEPT PARTS MADE TO THE  
REQUIREMENTS OF MIL-C-28754/24A AMP PART NUMBER 117139,  
117140, 117141. THESE COMPONENTS MUST BE BONDED TO THE  
HEADERS. A NONCONDUCTIVE EPOXY IS RECOMMENDED BY AMP,  
BUT A CYANOACRYLATE TYPE ADHESIVE MAY BE ACCEPTABLE  
FOR MOST CUSTOMER APPLICATIONS.
- 9 WHEN KEYING PINS MEETING THE REQUIREMENTS OF MIL-C-28754/24A  
ARE INSTALLED, THE MATING RECEPTACLE PANEL IS TO HAVE A  
CLEARANCE HOLE OF .158 DIA TO PERMIT COMPLETE ENGAGEMENT  
OF THE HEADER. (REF PART NUMBER 116975 RECEPTACLE)
- 10 STAMP AMP PART NUMBER AND DATE CODE PER  
MIL-STD-202, METHOD 215.
- 11 STAMP IDENTIFICATION NUMBERS FOR END CONTACTS PER  
MIL-STD-202, METHOD 215. (SEE TABLE)
- 12 CONTACT TAILS PLATED WITH .000150 TO .000200 THK  
TIN-LEAD (93/7).

OBSOLETE	41	40		4.200 [106.68]	4.470 [113.54]	3.900 [99.06]	39	4.784 [121.51]	40	228235-6
	51	50		5.200 [132.08]	5.470 [138.94]	4.900 [124.46]	49	5.784 [146.91]	50	228235-5
OBSOLETE	1	55	 	5.700 [144.78]	5.970 [151.64]	5.400 [137.16]	54	6.284 [159.61]	55	228235-4
	41	40	 	4.200 [106.68]	4.470 [113.54]	3.900 [99.06]	39	4.784 [121.51]	40	228235-3
OBSOLETE	51	50	 	5.200 [132.08]	5.470 [138.94]	4.900 [124.46]	49	5.784 [146.91]	50	228235-2
OBSOLETE	31	30		3.200 [81.28]	3.470 [88.14]	2.900 [73.66]	29	3.784 [96.11]	30	228235-1
		IDENT NUMBERS	PLATING	E	D	C	B	A	NO OF POS	PART NUMBER

THIS DRAWING IS A CONTROLLED DOCUMENT.		DWN: 13APR2009 DW: P. YEAGER J. WEAVER APVD: 14APR09		 TE Connectivity	
DIMENSIONS: INCHES		TOLERANCES UNLESS OTHERWISE SPECIFIED: 0 PLC ± - 1 PLC ± - 2 PLC ± - 3 PLC ± .008 [0.20] ANGLES ± 1°		NAME ECONOMATE II CONNECTOR ASSY BLADE, HEADER, .100 X .100	
		PRODUCT SPEC - APPLICATION SPEC -		SIZE A1	
MATERIAL 		FINISH -		CAGE CODE 00779	
		WEIGHT -		DRAWING NO C-228235	
		CUSTOMER DRAWING		SCALE 2:1 SHEET 1 of 1 REV G	

# Mouser Electronics

Authorized Distributor

Click to View Pricing, Inventory, Delivery & Lifecycle Information:

[TE Connectivity:](#)

[228235-3](#)