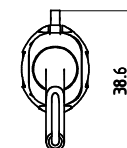
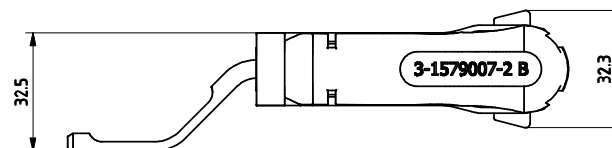
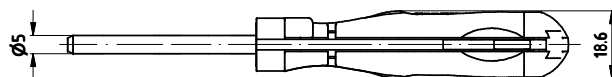
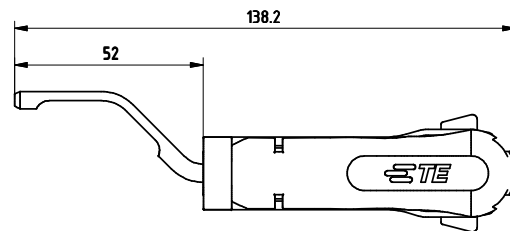
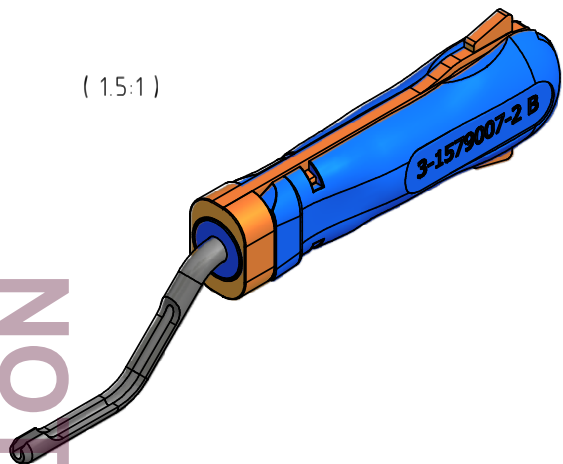


REVISIONS				
P	LTR	DESCRIPTION	DATE	OWN APVD
B		ECR-11-016948	16AUG11	LS GS




(1.5:1)



NOT the LATEST REVISION

APPLICATION RANGE / ANWENDUNGSBEREICH
 2.5mm Single Wire System
 Insulation diameter $\leq 2.1\text{mm}$
 pin and socket contact /
 2.5mm Einzeldichtungssystem
 Isolationsdurchmesser $\leq 2.1\text{mm}$
 Stift- und Buchsenkontakt

THIS DRAWING IS A CONTROLLED DOCUMENT.		OWN M. Delp 15 JAN 08	 TE Connectivity
		CHK G. Stegmayer 15 JAN 08	
		DPD G. Stegmayer 15 JAN 08	NAME INSERTION TOOL
DIMENSIONS: mm		PRODUCT SPEC	Einsetzwerkzeug
TOLERANCES UNLESS OTHERWISE SPECIFIED: Ø PL/C # 1 PL/C # 2 PL/C # 3 PL/C # 4 PL/C # ANGLES #		APPLICATION SPEC	SIZE A2
MATERIAL		FINISH	CAGE CODE 00779
		Gewicht / Weight in Kg 0.031	DRAWING NO 3-1579007-2
		CUSTOMER DRAWING	
		SCALE 1:1	SHEET 1 of 1
		REV B	

Mouser Electronics

Authorized Distributor

Click to View Pricing, Inventory, Delivery & Lifecycle Information:

[TE Connectivity:](#)

[3-1579007-2](#)