

This drawing involves proprietary design rights of Tyco Electronics Corporation, and all design, manufacture, reproduction, use and sale rights regarding the same are expressly reserved. It is submitted for a specific purpose and the recipient by accepting this drawing, assumes custody and control and agrees to take reasonable precautions; (a) that this drawing will not be copied and reproduced, in whole or in part, or its contents revealed in any manner, or to any person except to meet the purpose for which it was delivered and (b) that any special features peculiar to this design will not be incorporated in other projects without the expressed written permission of Tyco Electronics Corporation.

REVISIONS			
EC	REV	DESCRIPTION	DATE
0S1Q-0417-04	A	NEW RELEASE	11/22/04

8. MODULE INFORMATION

CONNECTOR	TYCO PART NUMBER	ELCON PART NUMBER	CATALOG MODULE #	QTY	SIZE NO.	CONTACT QTY	MATING PIN	MAX. CURRENT (PER CONTACT)	CONTACT SPACING	VOLTAGE RATING*
SOCKET	6651146-1	278-0852-10200A	FP0200	2	8	2	1.25 X 7.00 [.049 X .276]	35 AMPERES	7.50 [2953]	250 VOLTS
			FP0515	ACTIVE STRAIGHT GUIDE PIN						
SOCKET	6651146-2	278-0852-10400A	FP0100	2	8	2	1.25 X 7.00 [.049 X .276]	35 AMPERES	7.50 [2953]	250 VOLTS
			FP0515	ACTIVE STRAIGHT GUIDE PIN						

*IAW IEC-950

NOTES: UNLESS OTHERWISE SPECIFIED.

1. PART NUMBER CHANGES AND OR DESIGN CHANGES AFFECTING ITEM INTERCHANGEABILITY REQUIRE PRIOR ELCON APPROVAL AND AUTHORIZATION BY REVISION TO THIS DRAWING.

2. MATERIALS:

INSULATORS: THERMOPLASTIC, GLASS REINFORCED, COLOR BLACK. UL94V-0 FLAMMABILITY RATED.

POWER CONTACTS: PHOSPHOR BRONZE ALLOY, COPPER ALLOY.

CROWN BANDS: BERYLLIUM COPPER ALLOY.
GUIDE PIN: BRASS COPPER ALLOY.

3. FINISHES:

CONTACTS: GOLD PLATED PER MIL-G-45204 TYPE II, CLASS 0, .000030" MIN. THK, OVER NICKEL PER QQ-N-290, CLASS 2, .000040" MIN. THICKNESS.

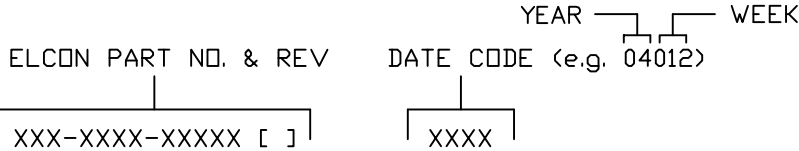
TERMINALS: TIN PLATED, MATTE FINISH, .000120" TO .000170" THICK.

GUIDE PIN: NICKEL PLATED PER AMS 2404.

4. RECOMMENDED PRESSING TOOL PN FIX00188 FOR PN 278-0852-10200.

△ ACTIVE GUIDE PIN ACCEPT M3 SCREWS, (USER SUPPLIED).

6. ITEMS PROVIDED TO THIS SPECIFICATION TO BE PERMANENTLY IDENTIFIED PER THE FOLLOWING IDENTIFIER:

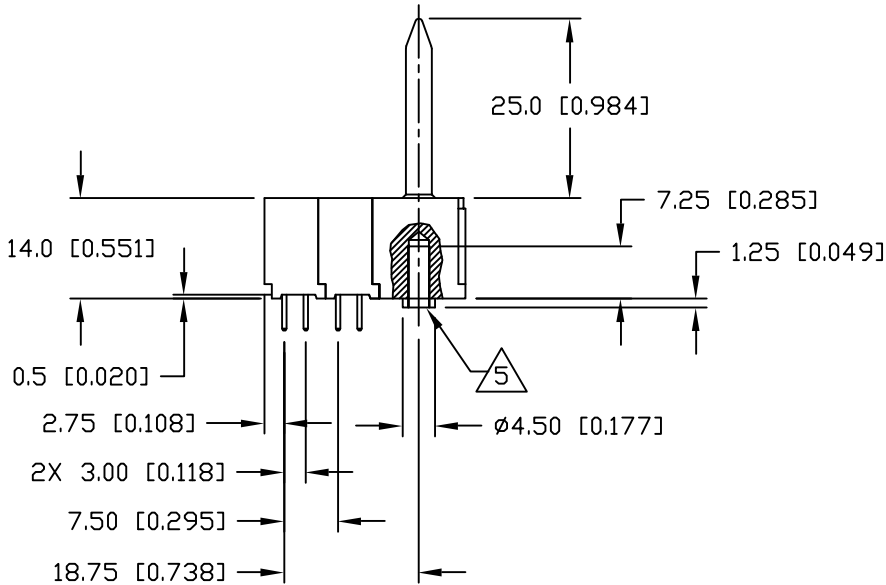
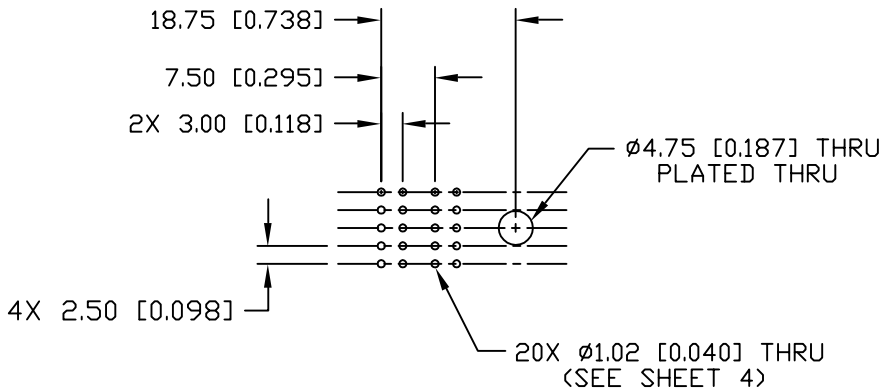
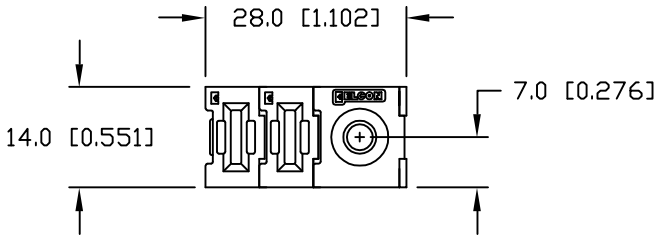
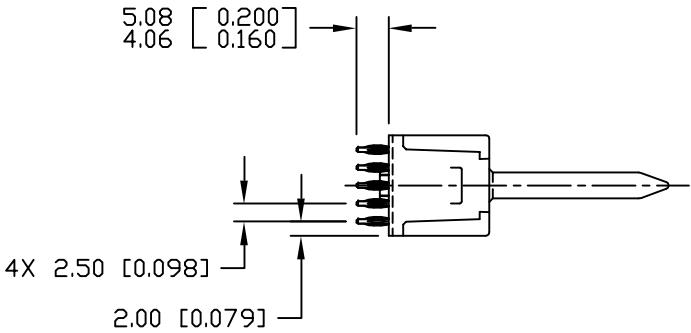


7. THIS CONNECTOR MATES WITH PIN CONNECTOR PN 479-0852-10100/-10300.

<div>← MM OR MM [INCH] INCH</div> <div></div> <div>THIRD ANGLE PROJECTION</div> <div>UNLESS OTHERWISE SPECIFIED DIMENSIONS ARE IN METRIC [INCHES]</div> <div>TOLERANCES</div> <div>ANGLES ± .5°</div> <div>DECIMALS</div> <div>.XX ± .25 [.010]</div> <div>.X ± .5 [.020]</div>	DRAWN R. F. A.	DATE 11/18/04	<div> Tyco Electronics Corporation Menlo Park, Ca 94025</div> <div></div>	
	CHECKED		TITLE	
	APPROVED		SOCKET CONNECTOR, FLATPAQ STRAIGHT, SOLDER & COMPLIANT TAILS PN: 278-0852-10200A/278-0852-10400A	
	APPROVED			
	D. CHAU	11/22/04	SIZE	DWG NUMBER
	DCA APPROVED	11/30/04	B	C = 6651146
	M. ALIM			REV. A
ACAD FILE NUMBER C6651146A.DWG			DWG SCALE 1 = 1 SH 1 OF 4	

This drawing involves proprietary design rights of Tyco Electronics Corporation, and all design, manufacture, reproduction, use and sale rights regarding the same are expressly reserved. It is submitted for a specific purpose and the recipient by accepting this drawing, assumes custody and control and agrees to take reasonable precautions; (a) that this drawing will not be copied and reproduced, in whole or in part, or its contents revealed in any manner, or to any person except to meet the purpose for which it was delivered and (b) that any special features peculiar to this design will not be incorporated in other projects without the expressed written permission of Tyco Electronics Corporation.

REVISIONS			
EC	REV	DESCRIPTION	DATE
		SEE SHEET 1	

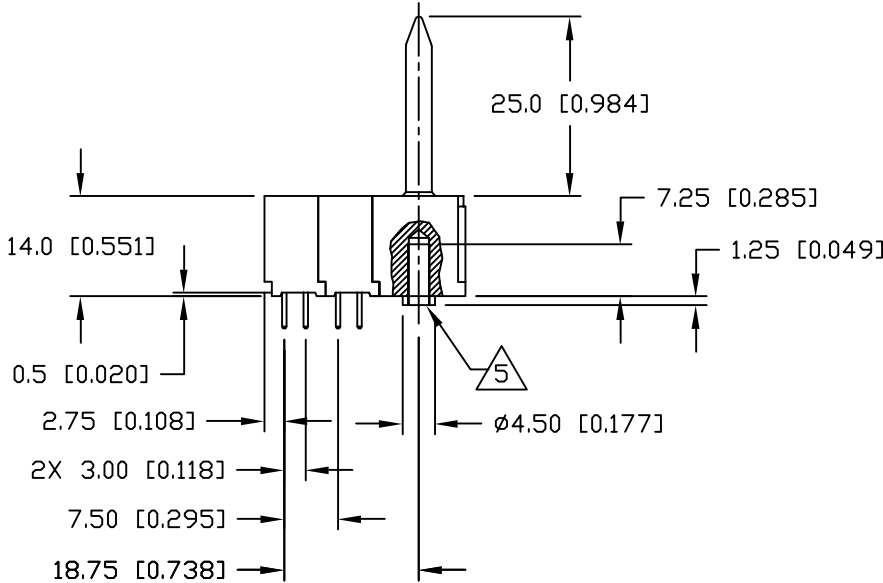
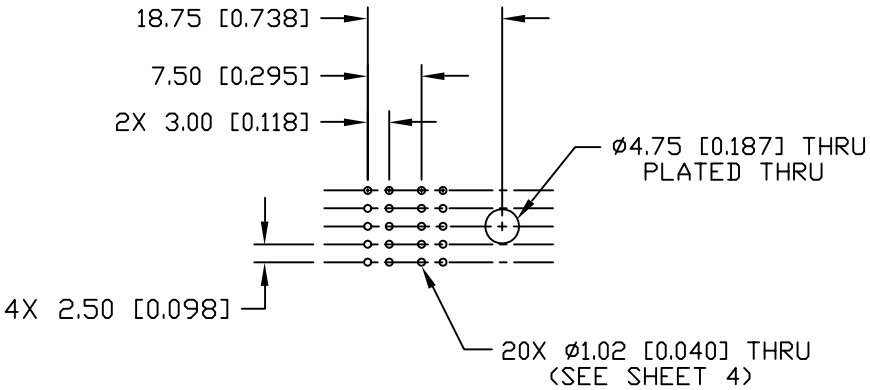
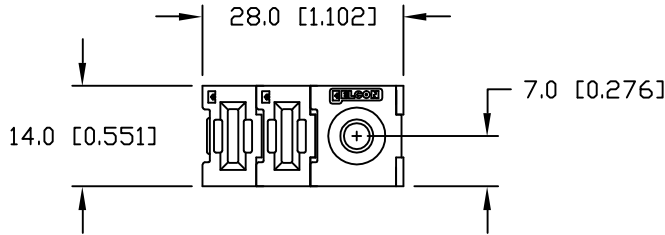
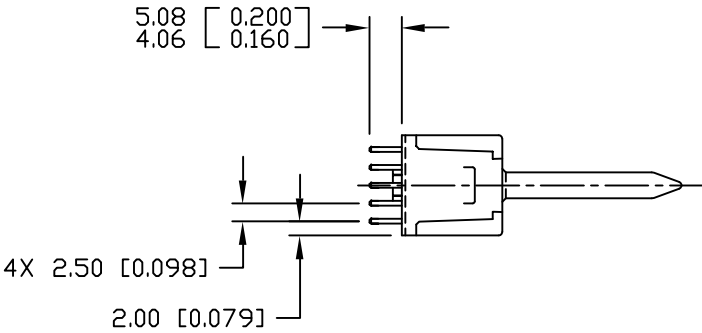


PRINTED CIRCUIT LAYOUT

<div>← MM INCH OR MM [INCH]</div> <div></div> <div>THIRD ANGLE PROJECTION</div> <div>UNLESS OTHERWISE SPECIFIED DIMENSIONS ARE IN METRIC [INCHES]</div> <div>TOLERANCES</div> <div>ANGLES ± .5°</div> <div>DECIMALS</div> <div>.XX ± .25 [.010]</div> <div>.X ± .5 [.020]</div>	DRAWN R. F. A.	DATE 11/18/04	<div>tyco Electronics</div> <div>Tyco Electronics Corporation Menlo Park, Ca 94025</div> <div>ELCON</div>		
	CHECKED		TITLE SOCKET CONNECTOR, FLATPAQ STRAIGHT, COMPLIANT TAILS PN: 278-0852-10200A		
	APPROVED				
	APPROVED				
	D. CHAU	11/22/04	SIZE B	DWG NUMBER C = 6651146	REV. A
	DCA APPROVED M. ALIM	11/30/04			
ACAD FILE NUMBER C6651146A.DWG		DWG SCALE 1 = 1		SH 2 OF 4	

This drawing involves proprietary design rights of Tyco Electronics Corporation, and all design, manufacture, reproduction, use and sale rights regarding the same are expressly reserved. It is submitted for a specific purpose and the recipient by accepting this drawing, assumes custody and control and agrees to take reasonable precautions; (a) that this drawing will not be copied and reproduced, in whole or in part, or its contents revealed in any manner, or to any person except to meet the purpose for which it was delivered and (b) that any special features peculiar to this design will not be incorporated in other projects without the expressed written permission of Tyco Electronics Corporation.

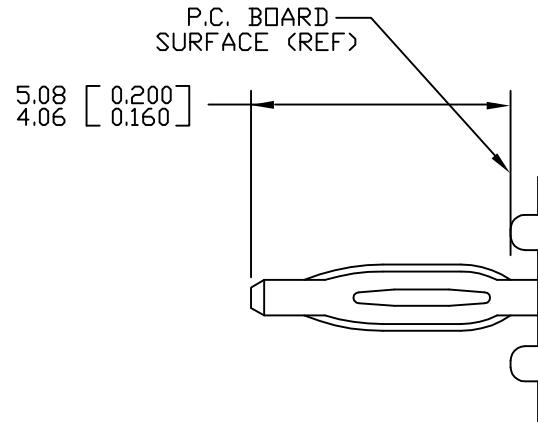
REVISIONS			
EC	REV	DESCRIPTION	DATE
		SEE SHEET 1	



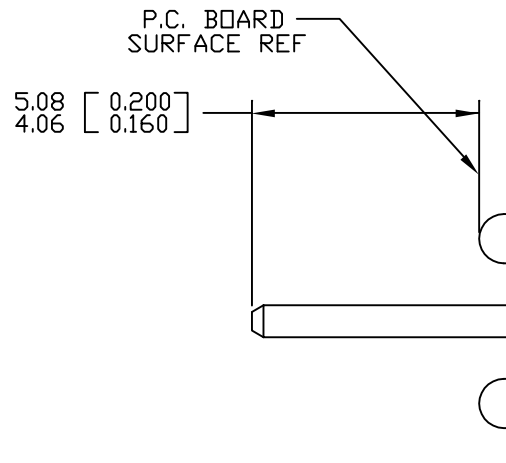
PRINTED CIRCUIT LAYOUT

<div>← MM INCH</div> <div>OR MM [INCH]</div> <div></div> <div>THIRD ANGLE PROJECTION</div> <div>UNLESS OTHERWISE SPECIFIED DIMENSIONS ARE IN METRIC [INCHES]</div> <div>TOLERANCES</div> <div>ANGLES ± .5°</div> <div>DECIMALS</div> <div>.XX ± .25 [.010]</div> <div>.X ± .5 [.020]</div>	DRAWN R. F. A.	DATE 11/18/04	<div> Tyco Electronics Corporation Menlo Park, Ca 94025</div> <div></div>		
	CHECKED		TITLE SOCKET CONNECTOR, FLATPAQ STRAIGHT, SOLDER TAILS PN: 278-0852-10400A		
	APPROVED				
	APPROVED				
	D. CHAU	11/22/04	SIZE B	DWG NUMBER C = 6651146	REV. A
	DCA APPROVED M. ALIM	11/30/04			
	ACAD FILE NUMBER C6651146A.DWG		DWG SCALE 1 = 1	SH 3 OF 4	

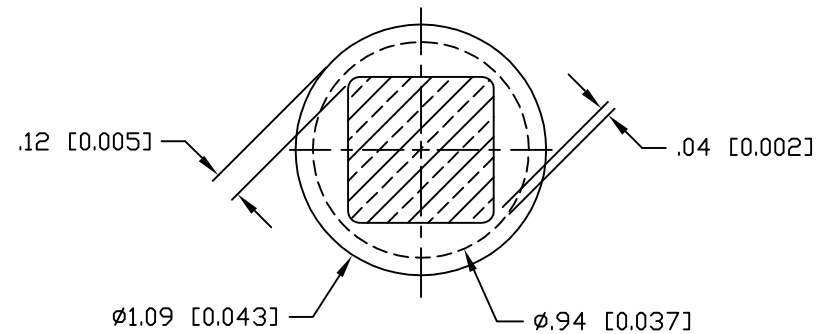
This drawing involves proprietary design rights of Tyco Electronics Corporation, and all design, manufacture, reproduction, use and sale rights regarding the same are expressly reserved. It is submitted for a specific purpose and the recipient by accepting this drawing, assumes custody and control and agrees to take reasonable precautions; (a) that this drawing will not be copied and reproduced, in whole or in part, or its contents revealed in any manner, or to any person except to meet the purpose for which it was delivered and (b) that any special features peculiar to this design will not be incorporated in other projects without the expressed written permission of Tyco Electronics Corporation.



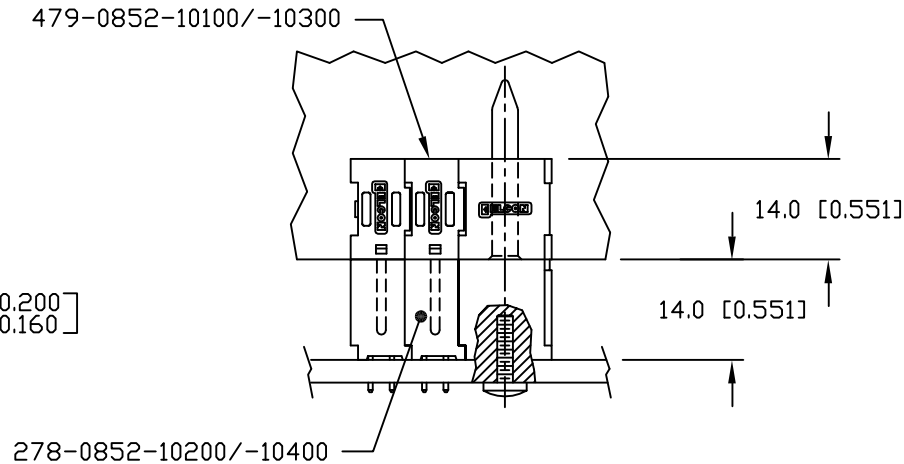
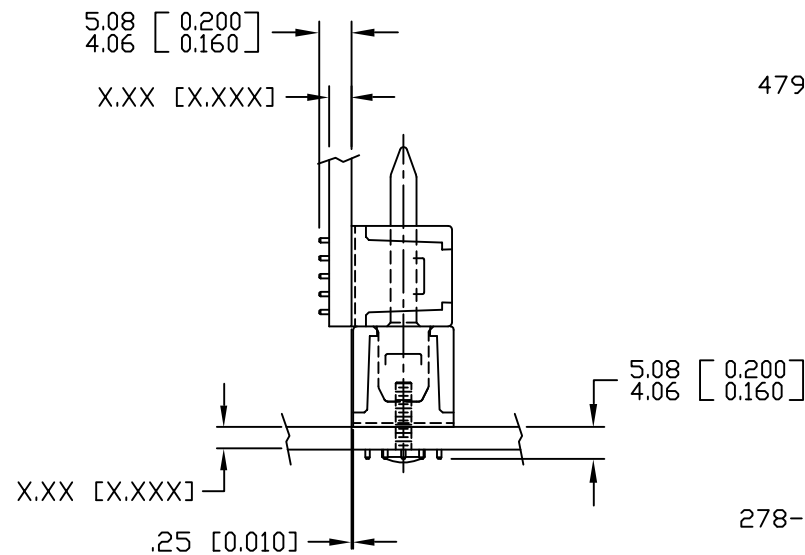
COMPLIANT PIN DETAIL
INSERTION/EXTRACTION FORCES
MAXIMUM PUSH-IN: 133.3N PER PIN
[30 LBS]
MINIMUM PUSH-OUT: 44.4N PER PIN
[10 LBS]



SOLDER PIN DETAIL



SOLDER TERMINATION AREA
RECOMMENDED PRINTED CIRCUIT HOLE
FINISHED HOLE: $\phi 1.02 [0.040] \pm .08 [0.003]$
DRILLED HOLE: $\phi 1.15 [0.0453] \pm .013 [0.0005]$
COPPER PLATE: .025 [0.0010] MINIMUM (PER SURFACE)
TIN PLATE: .008 [0.0003] MINIMUM (PER SURFACE)



MATED CONDITION

<div>MM OR MM [INCH]</div> <div></div> <div>THIRD ANGLE PROJECTION</div> <div>UNLESS OTHERWISE SPECIFIED DIMENSIONS ARE IN METRIC [INCHES]</div> <div>TOLERANCES</div> <div>ANGLES $\pm .5^{\circ}$</div> <div>DECIMALS</div> <div>.XX $\pm .25 [0.010]$</div> <div>.X $\pm .5 [0.020]$</div>	DRAWN R. F. A.	DATE 11/18/04	<div> Tyco Electronics Corporation Menlo Park, Ca 94025</div> <div></div>	
	CHECKED		TITLE	
	APPROVED		USER INFORMATION	
	APPROVED		SOLDER & COMPLIANT TAILS TERMINATION AND MATED CONDITION	
	D. CHAU	11/22/04	SIZE B	DWG NUMBER C = 6651146
	DCA APPROVED	11/30/04		REV. A
	M. ALIM			
	ACAD FILE NUMBER	C6651146A.DWG	DWG SCALE	1 = 1
				SH 4 OF 4

Mouser Electronics

Authorized Distributor

Click to View Pricing, Inventory, Delivery & Lifecycle Information:

[TE Connectivity:](#)

[6651146-1](#)