

**Model**

# AAD600S

600 Watts<sub>max</sub> output power

Power Factor Correction

Single Output

**H.A.L.T.** Highly Accelerated Life Testing  
TESTED

### Electrical Specifications

Input Voltage:	85-264 VAC, 47-63 Hz
Input Current:	<6.5A RMS @ 115 VAC @ full load <3.5A RMS @ 230 VAC @ full load 9.0A RMS @ 85 VAC @ full load
Inrush Current:	<20A, pk @ 110 VAC, active soft start <40A, pk @ 220 VAC, active soft start (Active independant of cold or warm start)
Power Factor:	>0.99 @ full load @ 230VAC input
Harmonic Distortion:	Meets IEC1000-3-2
EMI Filtering:	Meets CISPR 11 and 22 and FCC Part 15 Class B (conducted)
Input Protection:	Internal AC line fuse; 250 VAC, 10A



Output Power:	Up to 600W continuous
Line Regulation:	± 0.1%
Load Regulation:	±0.25%
PARD:	<1% or 250mV 20MHz bandwidth
Hold-up Time:	>16 ms @ full load
Output Polarity:	Output is floating
Minimum Load:	None
Transient Response:	2% for 25% load change @ 1A/μs
Output Rise Time:	<100 ms (10% to 90%)
Remote Sense:	Standard
Current Share:	Within 5%
Remote On/Off:	Ground or TTL <sub>LOW</sub> = OFF Open or TTL <sub>HIGH</sub> = ON

AC Power Fail:	TTL <sub>LOW</sub> logic "0" at least 2 ms before DC output drops 5% (without signal jitter). Open collector.
DC OK:	Open collector when output voltage is above 95% of rated
Overcurrent/Short Circuit:	Square current limit; 105-130% of rated
Overvoltage Protection:	Factory set, 125% ±5% cycle AC to reset
Reverse Voltage:	Reverse current up to rated outputs
Thermal Protection:	Auto off; auto reset upon cool down
Efficiency:	Up to 92%
MTBF:	MIL-STD-HDBK 217E 200,000 hours @ 25°C, ground benign, Highly Accelerated Life Testing

### Available Voltage Outputs\*

Voltage Codes	Voltages (Volts)	Continuous Current (Amps)
<b>-4</b>	<b>12</b>	<b>42</b>
-5	15	36
<b>-6</b>	<b>24</b>	<b>23</b>
-7	28	20
-8	36	16
<b>-9</b>	<b>48</b>	<b>12.5</b>

\* Consult factory for other voltages and OEM quantities.

Note: Standard models are shown **bold**

### PART # STRUCTURE:

**MODEL** - **VOLTAGE CODE** - **OPTION CODES** (See back)  
- **V1** -  
**AAD600S** - **X** - **ABC...**

Example: Part Number **AAD600S-8-CF** = 600W Power Factor Corrected, 36V @ 16A with sealed pots and overcurrent foldback mode.

SEE 3rd PAGE FOR THE AAD600S CODE TABLE AND AVAILABLE OPTIONS.

Model

## AAD600S



### Options (code)

- |                                  |                                 |
|----------------------------------|---------------------------------|
| DC OK Invert (U)                 | PF Invert (B)                   |
| Metric Mounting (M)              | Remote On/Off Invert (S)        |
| OR-ing Diodes (O)                | Overcurrent Hiccup Mode (D)     |
| Droop Current Share (A)          | Overcurrent Latch-off Mode (E)  |
| Gold Plated Signal Connector (G) | Overcurrent Foldback Mode (F)   |
| Sealed Pots (C)                  | Standby Power (5VDC @ 1A) (P)** |

\*\*Voltage available as long as AC input is present

GUZmi7 ca d'jUbWV

IEC / EN / UL / CSA 60950-1

CE Declaration to Low Voltage Directive 2006/95/EC and

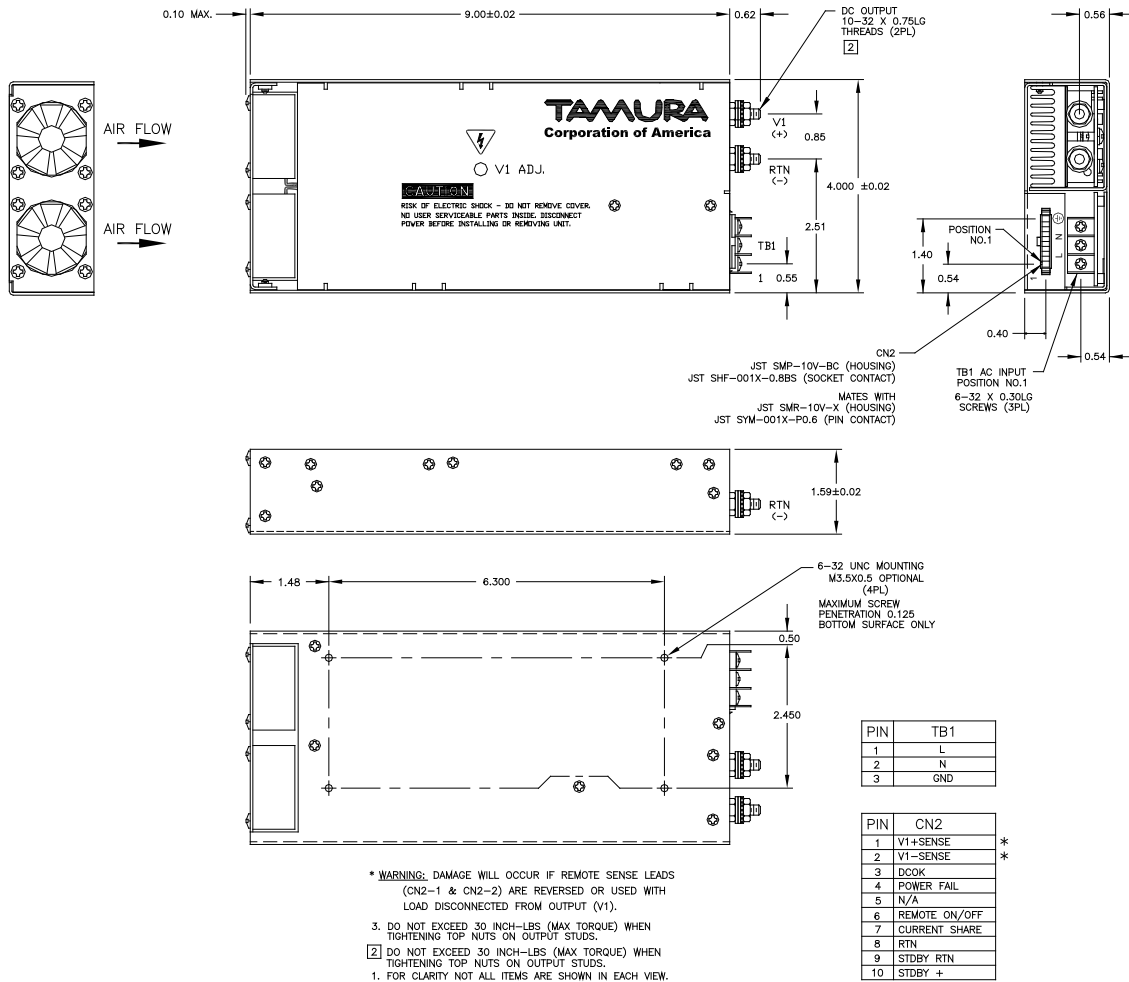
RoHS Directive 2011/65/EU

### Surge & ESD Test Levels

- |                     |                                |
|---------------------|--------------------------------|
| EN61000-4-5 Level 3 | EN61000-4-2 Level 2            |
| EN61000-3-2         | EN61000-4-2 Level 3 (Air Only) |
| EN61000-4-4 Level 3 | EN61000-4-11                   |
- Meets Class B conducted limits per CISPR 11/22 and CFR 15 subpt B

### Physical Specifications

- |                     |  |
|---------------------|--|
| Dimensions: (HxWxL) | 1.59" x 4" x 9"  |
| Operating Temp:     | 0 to 70°C; rated power to 50°C derate linearly to 50% at 70°C. |
| Relative Humidity:  | 5% to 90%, non-condensing                                      |
| Storage:            | -50 to 85°C/20-90% RH  |
| Altitude:           | 6,561' operating;<br>40,000' storage                           |



## AAD600S Series Part Number Code Table

Standard Models

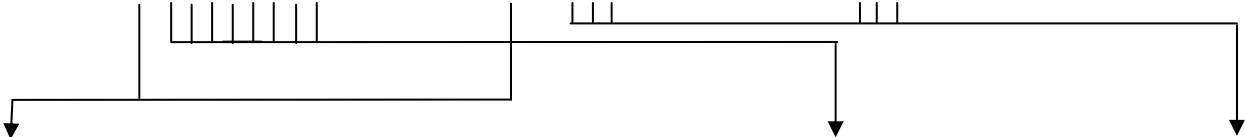
Tailored Models

Custom Models

AAD600S-X-YYYYYY

AAD600S-X-60ZZZ

AAD600S-61ZZZ



P/N Codes		Output Voltage and Current Codes		Standard Options	
DC Output Voltage Code	"X" Channel (V1)		"Y" Code Description		
	Volts	Amps			
4	12.0	42.0	<ul style="list-style-type: none"> <li>A Droop Current Share</li> <li>B PF Invert</li> <li>C Sealed pot</li> <li>D OCP Hicc-up Mode</li> <li>E OCP latch off mode</li> <li>F OCP fold back mode</li> <li>G Gold plated signal connector</li> <li>M Metric Mounting</li> <li>O OR-ing Diode</li> <li>P 5Vdc, 1A Standby Output</li> <li>S Remote On/Off Invert (Open is off)</li> <li>U DCOK Invert</li> </ul>		
5	15.0	36.0			
6	24.0	23.0			
7	28.0	20.0			
8	36.0	16.0			
9	48.0	12.5			
			<p>Tailored Units (no safety changes: omit "X" code)</p> <p style="text-align: center;">for non-standard output)</p> <p>-----</p> <p>"60ZZZ" : "Z" – Factory Assigned P/N</p> <p>Harnesses Added, Special test data ... ETC....</p>		
			<p>Custom Units (safety critical changes)</p> <p>-----</p> <p>"61ZZZ" : "Z" – Factory Assigned P/N</p> <p>ETC.....</p>		