

4

3

2

1

THIS DRAWING IS UNPUBLISHED.

RELEASED FOR PUBLICATION

© COPYRIGHT

ALL RIGHTS RESERVED.

LOC

DIST


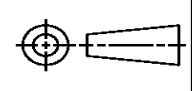
REVISIONS

| P | LTR | DESCRIPTION | DATE | DWN | APVD |
|---|-----|---------------|-----------|-----|------|
| | A1 | ECR-14-003312 | 05MAR2014 | GK | HMR |
| | | | | | |
| | | | | | |
| | | | | | |

REPLACED BY OCEAN STYLE APPLICATOR PART
NUMBER 2151439-5




FOR REPLACEMENT PARTS FOR APPLICATOR 2034074
REFER TO ADDITIONAL PAGE(S). SPARE PARTS KIT (IF LISTED)
WILL REMAIN AVAILABLE.

THE REPLACEMENT OCEAN STYLE APPLICATOR HAS THE
SAME TERMINATOR/PRESS INTERFACE AS APPLICATOR
2034074

| | | | | | | |
|---|--|--|------------------|---|---|--|
| THIS DRAWING IS A CONTROLLED DOCUMENT. | | DWN | GOPALAKRISHNA HV | |  TE Connectivity | |
| | | CHK | RAGHAVENDRA | | | |
| DIMENSIONS: | | TOLERANCES UNLESS OTHERWISE SPECIFIED: | | APVD | RAGHAVENDRA | |
|  | | 0 PLC ± | | NAME SIDE FEED SYSTEM III APPLICATOR WITH FINE ADJUST | | |
| | | 1 PLC ± | | | | |
| | | 2 PLC ± | | | | |
| | | 3 PLC ± | | | | |
| 4 PLC ± | | 4 PLC ± | | SIZE A 3 | | |
| ANGLES ± | | FINISH | | | | |
| MATERIAL | | | | RESTRICTED TO | | |
| | | | | | | |
| | | | | SCALE | | |
| | | | | | | |
| | | | | REV A1 | | |

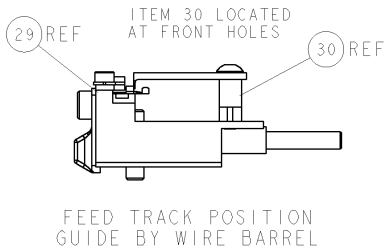
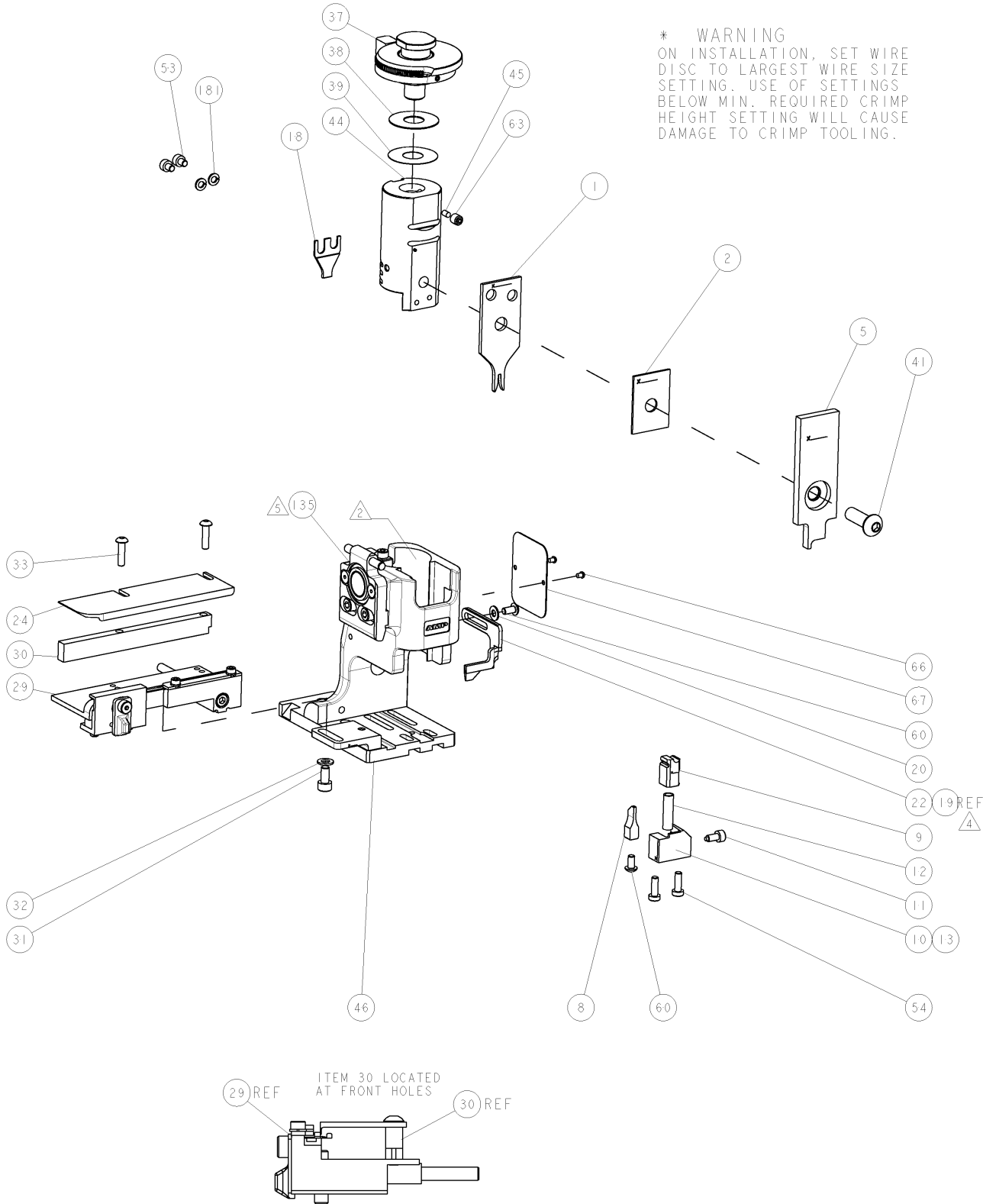
| | | | |
|--|-----|--------------------|------------------------|
| THIS DRAWING IS UNPUBLISHED. RELEASED FOR PUBLICATION | | | |
| COPYRIGHT 2018 BY TYCO ELECTRONICS CORPORATION. ALL RIGHTS RESERVED. | | | |
| PART NUMBER | REV | DESCRIPTION | PROGRAMMED MEMORY CHIP |
| 2034074-1 | A | CUTS CARRIER | 8-2034074-1 |
| 2034074-6 | A | CONTINUOUS CARRIER | 8-2034074-6 |
| 7-2034074-1 | A | -1 AND SPARE PARTS | 9-2034074-1 |
| 7-2034074-6 | A | -6 AND SPARE PARTS | 9-2034074-6 |
| 7-2034074-7 | A | SPARE PARTS KIT | - |

| APPLICATOR DATA | | |
|-----------------------------|---------------|------|
| CRIMP | SIZE | TYPE |
| WIRE | 1.78mm [.070] | F |
| INSUL | - | - |
| APPL INSTRUCTIONS 408-10135 | | |

| | | | |
|---|---|---|---|
| TERMINAL DATA: TE TERMINAL | | TYCO ELECTRONICS CRIMP SPEC | |
| TERMINAL NAME: MOTOR TERMINAL 2 | | | |
| WIRE STRIP LENGTH 2.7-3.2 mm [.108-.127 IN] | |  | INSULATION DIAMETER RANGE 1.50-2.50mm [.059-.098 IN] |
| TERMINAL | 114-17006 | - | - |
| APPL SPEC |  | - | - |
| TERMINALS APPLIED | | | |
|  | | | |
| 279328-1 | - | - | - |

| WIRE SIZE | CRIMP HEIGHT mm [INCH] | REF SETTING* |
|--------------------|---------------------------|--------------|
| 0.5mm ² | 1.12±.05 [.044±.002] | B1 |
| 0.4mm ² | 1.07±.05 [.042±.002] | B5 |
| 0.3mm ² | 1.02±.05 [.040±.002] | B9 |
| 0.2mm ² | .97±.05 [.038±.002] | C3 |

- RECOMMENDED SPARE PARTS.
- GREASE BEARING SURFACES LIGHTLY.
3. LUBRICATE DAILY PER THE APPLICATOR INSTRUCTION SHEET SUPPLIED WITH THE APPLICATOR.
- ITEM 19 - OPTIONAL STRIPPER FOR BENCH MACHINE APPLICATIONS.
- APPLICATOR SPECIFIC DATA TO BE ENTERED INTO BLANK MEMORY CHIP AT ASSEMBLY.
- APPLY P/N 1-23419-5 LOCTITE(R) TO THREADS.



| | | | | | | | |
|-----|-----|-----|-----|-----|-------------|-------------------------------------|---------|
| - | 2 | 2 | 2 | 2 | 18026-2 | WASHER, SPRG LOCK, REG M4 | 181 |
| - | REF | REF | REF | REF | SEE TABLE | MEMORY CHIP, PROGRAMMED | 135 |
| - | 1 | 1 | 1 | 1 | 1633565-1 | DOCUMENTATION PACKAGE SIII | 71 |
| - | 1 | 1 | 1 | 1 | 1976552-1 | TAG, IDENTIFICATION | 67 |
| - | 2 | 2 | 2 | 2 | 21017-1 | SCREW, DRIVE | 66 |
| - | 1 | 1 | 1 | 1 | 3-18031-0 | SCR, SET, CUP POINT M6 X 6.0 | 63 |
| - | 2 | 2 | 2 | 2 | 1655785-1 | SCR, BTN SKT HD CAP (M4 X 8) | 60 |
| - | 2 | 2 | 2 | 2 | 1655783-3 | SCR, CAP, SOC HD, LOW HEAD, M4 X 12 | 54 |
| - | 2 | 2 | 2 | 2 | 1-1655316-7 | SCR, SKT HD CAP, M4 X 5.0 | 53 |
| - | 1 | 1 | 1 | 1 | 1752300-1 | SF SYSTEM III APPLICATOR | 46 |
| - | 1 | 1 | 1 | 1 | 690191-1 | PLUG, NYLON | 45 |
| - | 1 | 1 | 1 | 1 | 1901069-1 | RAM ASSEMBLY, SYSTEM III RETROFIT | 44 |
| - | 1 | 1 | 1 | 1 | 2-1655785-3 | SCR, BTN SKT HD CAP (M8 X 25) | 41 |
| - | 1 | 1 | 1 | 1 | 690125-1 | SHIM SUB-ASSY | 39 |
| - | 1 | 1 | 1 | 1 | 1-469367-2 | SHIM | 38 |
| - | 1 | 1 | 1 | 1 | 879103-4 | FINE ADJUST HEAD ASSEMBLY | 37 |
| - | 2 | 2 | 2 | 2 | 1655785-3 | SCR, BTN SKT HD CAP (M4 X 16) | 33 |
| - | 1 | 1 | 1 | 1 | 18028-3 | WASHER, FLAT, REG M5 | 32 |
| - | 1 | 1 | 1 | 1 | 5-1655316-3 | SCR, SKT HD CAP, M5 X 10.0 | 31 |
| - | 1 | 1 | 1 | 1 | 1320908-4 | SPACER, STRIP GUIDE | 30 |
| - | 1 | 1 | 1 | 1 | 1901087-1 | ASSEMBLY, STRIP GUIDE | 29 |
| - | 1 | 1 | 1 | 1 | 1320928-1 | PLATE, STRIP GUIDE | 24 |
| - | 1 | 1 | 1 | 1 | 1976045-1 | STRIPPER | 22 |
| - | 1 | 1 | 1 | 1 | 18028-2 | WASHER, FLAT, REG M4 | 20 |
| - | REF | REF | REF | REF | 1752311-1 | STRIPPER | 19 |
| - | 1 | 1 | 1 | 1 | 1-690518-1 | HOLD DOWN, TERMINAL | 18 |
| - | 1 | - | 1 | - | 1338684-1 | SHEAR HOLDER, FRONT | 13 |
| - | 1 | 1 | 1 | 1 | 3-22280-3 | SPRING, COMPRESSION | 12 |
| - | 1 | 1 | 1 | 1 | 356885-4 | STOP, SHEAR | 11 |
| - | - | 1 | - | 1 | 1320921-1 | SHEAR HOLDER, FRONT, CUT | 10 |
| - | 1 | 1 | 1 | 1 | 462006-1 | FLOATING SHEAR, FRONT | 9 |
| - | 1 | 2 | 2 | 1 | 7-1633139-4 | ANVIL, COMBINATION | 8 |
| - | 1 | 1 | 1 | 1 | 2-455889-0 | DEPRESSOR, SHEAR | 5 |
| - | 1 | 1 | 1 | 1 | 1-455888-0 | SPACER, CRIMPER | 2 |
| - | 1 | 2 | 2 | 1 | 3-456404-2 | CRIMPER, WIRE PREMIUM | 1 |
| -77 | -76 | -71 | -6 | -1 | PART NO | DESCRIPTION | ITEM NO |

| | | | | | | | | | | | | | |
|-------------------------|------|--|------|--------------|------|------------------|------|-----------|------|--------|------|------------------|-----|
| DIMENSIONS (INCHES[mm]) | | TOLERANCES UNLESS OTHERWISE SPECIFIED: | | PRODUCT SPEC | | APPLICATION SPEC | | SEE TABLE | | WEIGHT | | CUSTOMER DRAWING | |
| 0 PLC | ±.01 | 1 PLC | ±.01 | 2 PLC | ±.01 | 3 PLC | ±.01 | 4 PLC | ±.01 | ANVILS | ±.01 | SCALE | 3:5 |
| MATERIAL | | FINISH | | APPROVALS | | DATE | | REV | | REV | | REV | |
| - | | - | | - | | - | | - | | - | | - | |

CUSTOMER ACCESSIBLE PRODUCTION DRAWING

Mouser Electronics

Authorized Distributor

Click to View Pricing, Inventory, Delivery & Lifecycle Information:

[TE Connectivity:](#)

[2034074-1](#)