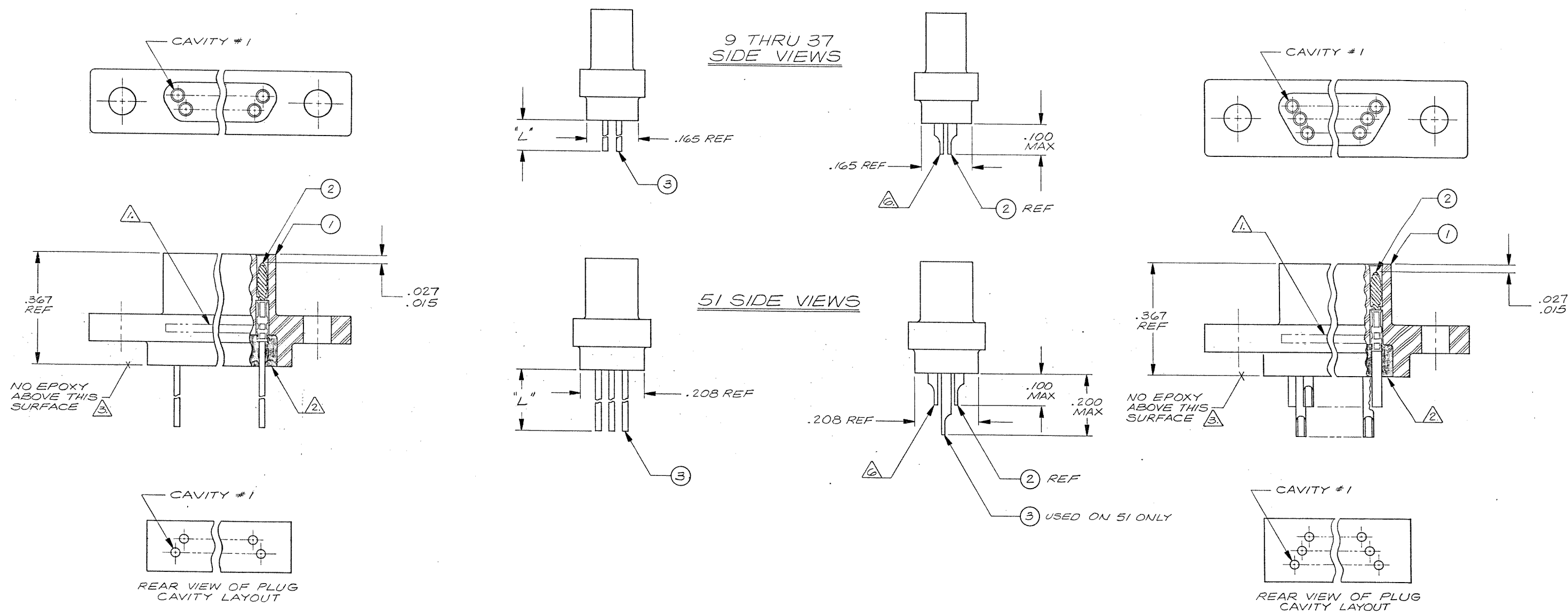




REVISIONS				
ZONE	LTR	ECN	DESCRIPTION	DATE
			SEE SHEET 1	
				APPROVED



### 9 THRU 37 CONFIGURATION

(SHOW WITH WIRE TERMINATIONS FOR REFERENCE ONLY. SOLDER POT TERMINATIONS ARE THE SAME CONFIGURATION)

### 51 CONFIGURATION

(SHOWN WITH SOLDER POT TERMINATIONS FOR REFERENCE ONLY. WIRE TERMINATIONS ARE THE SAME CONFIGURATION)

### NOTES: UNLESS OTHERWISE SPECIFIED

- MARK "MALCO" OR MALCO LOGO, MILITARY PART NO. (e.g. M83513/06-\*), CODE IDENT. NO., & DATE CODE WITH .047 MIN HIGH CHARACTERS IN APPROXIMATE LOCATION SHOWN.
- EPOXY USING HYSOL # 4215 & 3561.
- EPOXY WICKING - UNINSULATED WIRE .050 MAX.  
INSULATED WIRE UP TO # 25 AWG .125 MAX.  
INSULATED WIRE # 24 AWG OR LARGER .200 MAX.
- CRIMP LEADS OR SOLDER POTS INTO CONTACTS PER MEP 302-05.
- NO SCRATCHES SHOWING BASE METAL PERMITTED ON SOLDER POTS.
- CHAMFER ON SOLDER POTS ARE TO BE PARALLEL WITH SIDES OF CONNECTOR WITHIN 10 DEGREES.

### TE Connectivity Drawing 1-1532149-4

QTY REQD	CODE IDENT	PART OR IDENTIFYING NO.	NOMENCLATURE OR DESCRIPTION
PARTS LIST			
UNLESS OTHERWISE SPECIFIED DIMENSIONS ARE IN INCHES TOLERANCES ARE:		CONTRACT NO.	
FRACTIONS ±	DECIMALS .XX ± .XXX ±	ANGLES ±	
MATERIAL		APPROVALS	DATE
		DRAWN <i>G. SAUER</i>	5-12-82
		CHECKED <i>E. J. [signature]</i>	5-17-82
		PR. ENG. <i>[signature]</i>	5-17-82
		APPD. <i>[signature]</i>	
FINISH		TE Connectivity	
		RACK & PANEL CONNECTOR, PLUG MCD PER MIL-C-83513	
NEXT ASSY		SIZE D	CODE IDENT NO. 98278
USED ON		DRAWING NO. 1-1532149-4	
APPLICATION		REV. B1	
DO NOT SCALE DRAWING		SHEET / OF /	

# Mouser Electronics

Authorized Distributor

Click to View Pricing, Inventory, Delivery & Lifecycle Information:

[TE Connectivity:](#)

[M83513/08-A01](#)