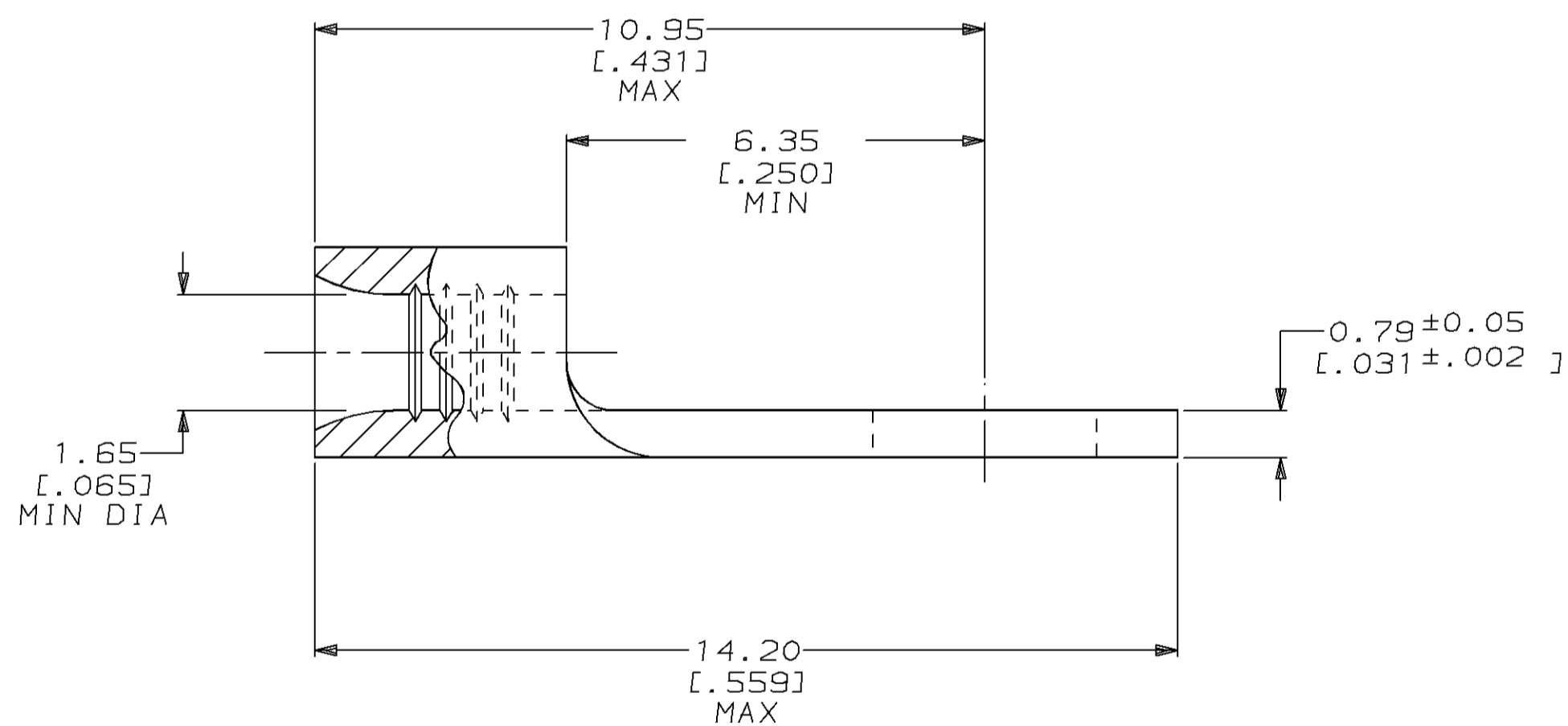
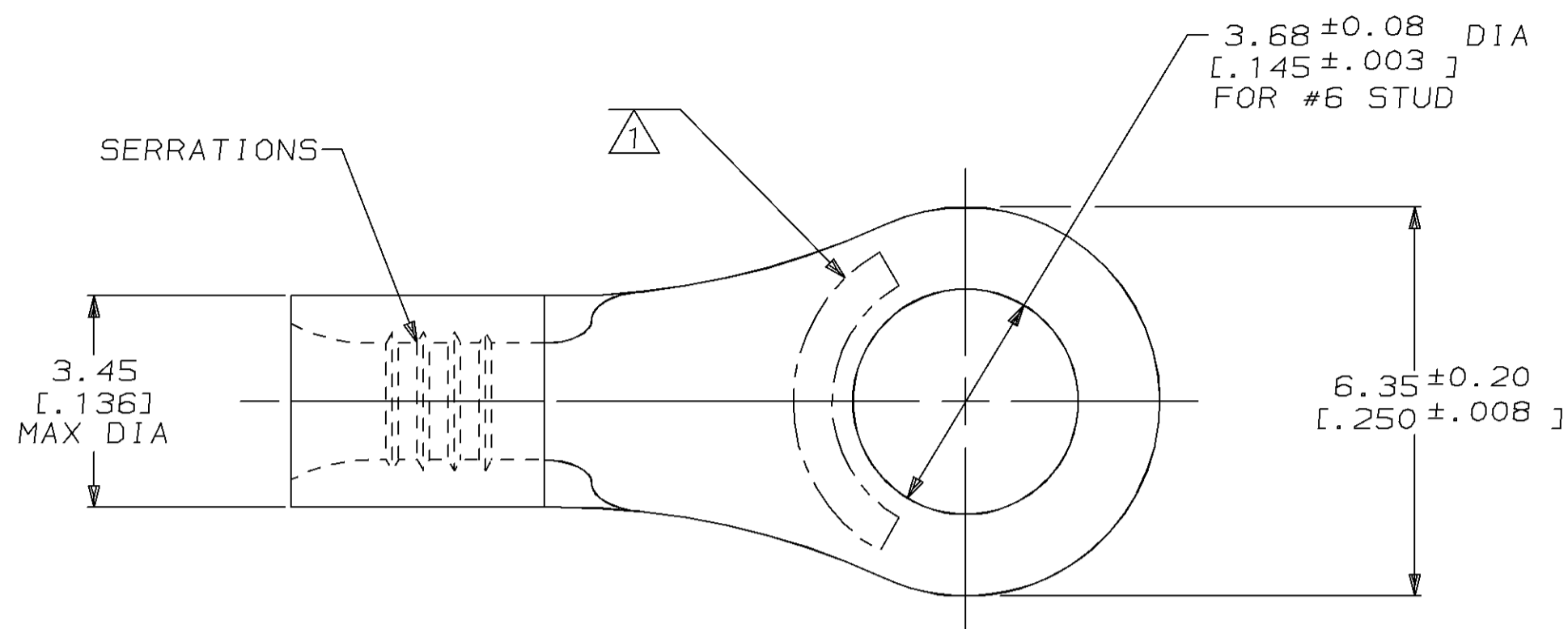


THIS DRAWING IS UNPUBLISHED. RELEASED FOR PUBLICATION  
 BY AMP INCORPORATED. ALL RIGHTS RESERVED.

LOC	DIST	REVISIONS					
		P	LTR	DESCRIPTION	DATE	DWN	APVD
G	14	0	-		08MAY97	DKS	MJS



<b>AMP</b> WIRE RANGE	E13288 Listed
22-16 AWG STRANDED	22-16 AWG STRANDED
LR7189 Certified	MILITARY P/N AND CLASS
NOT CERTIFIED	NOT APPLICABLE

- ① STAMP AMP [ ] APPROX AS SHOWN  
22-16 TERMINALS ARE STAMPED 22-18 IN  
ACCORDANCE WITH MILITARY SPEC MIL-T-7928  
COMMERCIAL WIRE RANGE IS 22-16  
SEE TABLE BELOW FOR STAMPING DESIGNATION
- ② TIN PL 0.00254 [.000100] MIN THK  
PER MIL-T-10727
- ③ TIN-LEAD PL 0.00254 [.000100] MIN THK  
PER MIL-T-10727
- ④ GOLD PL 0.00127 [.000050] MIN THK  
PER MIL-G-45204 OVER NICKEL PL  
0.00076 [.000030] MIN THK PER QQ-N-290
- ⑤ NICKEL PL 0.00762 [.000300] MIN THK  
PER QQ-N-290

22-18*	⑤-	2-51873-1
18*	⑤-	1-51873-9
20*	⑤-	1-51873-8
22-18*	⑤-	51873-9
22-18*	⑤-	51873-8
18*	⑤-	51873-4
20*	⑤-	51873-3
22*	⑤-	51873-2
22-18*	⑤-	51873-1
STAMPING	FINISH	AMP PART NUMBER

**AMP INCORPORATED**  
**CUSTOMER SERVICE SYSTEMS**

RECOMMENDED OPERATING TEMPERATURE:  
 170°C MAX

FOR ADDITIONAL PRODUCT  
 INFORMATION OR COPIES OF DRAWINGS  
 AND TECHNICAL DOCUMENTS

PRODUCT INFORMATION CENTER  
 1-800-522-6752

VOLTAGE RATING:  
 NOT APPLICABLE

FOR APPLICATION  
 TOOLING INFORMATION

TOOLING ASSISTANCE CENTER  
 1-800-722-1111

WIRE CROSS SECTIONAL AREA RANGE:  
 0.26-1.65mm<sup>2</sup> [509-3,260] CIR MILS  
 STRANDED

FOR ORDER ENTRY

1-800-526-5142

THIS DRAWING IS A CONTROLLED DOCUMENT.

DWN DK SCHRUM 08MAY97  
 CHK MJ SPICER 08MAY97  
 APVD JL MECKLEY 08MAY97

**AMP** AMP Incorporated  
 Harrisburg, PA 17105-3608

DIMENSIONS mm [INCHES]	TOLERANCES UNLESS OTHERWISE SPECIFIED:
	0 PLC ±
	1 PLC ±
	2 PLC ±0.20 [.008]
	3 PLC ±
	4 PLC ±
	ANGLES ±
MATERIAL COPPER PER ASTM B-152 ANNEALED	FINISH SEE TABLE

PRODUCT SPEC	APPLICATION SPEC	WEIGHT	CUSTOMER DRAWING
-	-	-	-

NAME		
TERMINAL, RING TONGUE, BUDGET		
SIZE	CAGE CODE	DRAWING NO
A2	00779	⑤-51873
SCALE	SHEET	REV
10:1	1 OF 1	0

# Mouser Electronics

Authorized Distributor

Click to View Pricing, Inventory, Delivery & Lifecycle Information:

[TE Connectivity:](#)

[51873-1](#)