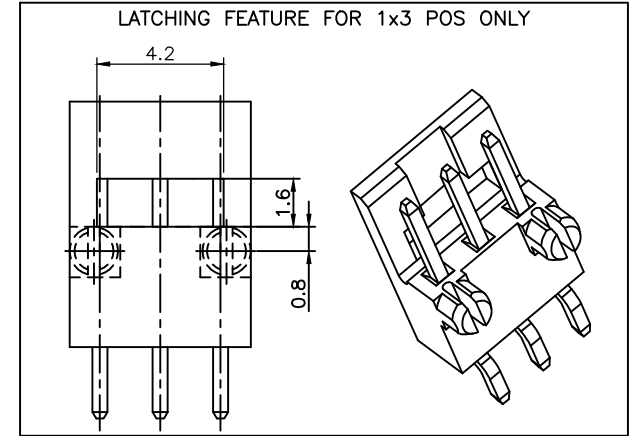
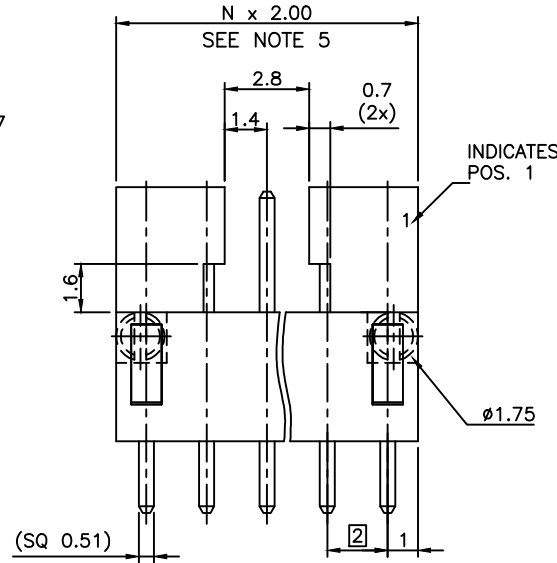


PRODUCT NUMBER
95000-XXXXLF

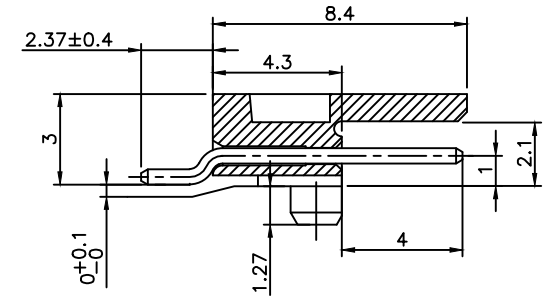
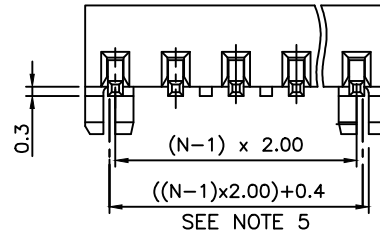
PLATING ————
 ———— RoHS COMPATIBLE, SEE NOTE 6
 ———— PACKAGING TYPE, NOTE 3
 ———— TOTAL NB OF POSITIONS, 3 TO 17

- 0 = 0.20µm GOLD/GXT ON CONTACT AREA
2.0µm MIN MATTE TIN ON TAILS
- 1 = 0.76µm GOLD/GXT ON CONTACT AREA
2.0µm MIN MATTE TIN ON TAILS
- 3 = 0.38µm GOLD/GXT ON CONTACT AREA
2.0µm MIN MATTE TIN ON TAILS
- T = FULL MATTE TIN 2µm-5µm
1.27µm Ni MIN UNDERPLATING

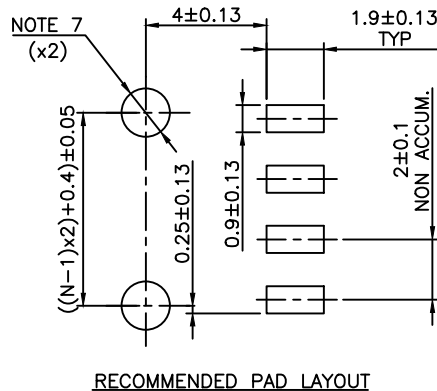


NOTES:

- 1 - HOUSING MAT'L : HIGH TEMPERATURE THERMOPLASTIC. UL94V-0 COLOR: CREAM
- 2 - PIN MATERIAL : COPPER ALLOY
- 3 - PACKAGING :
= POLY BAGS
T = TUBE, FROM 04 POS UP TO 17 POS
TR = TAPE & REEL AS AVAILABLE.
- 4 - 7N MIN RETENTION IN EITHER DIRECTION
- 5 - TO DETERMINE DIMENSIONS :
N = NUMBER OF POSITIONS
- 6 - RoHS COMPATIBLE PRODUCT SPECIFICATIONS

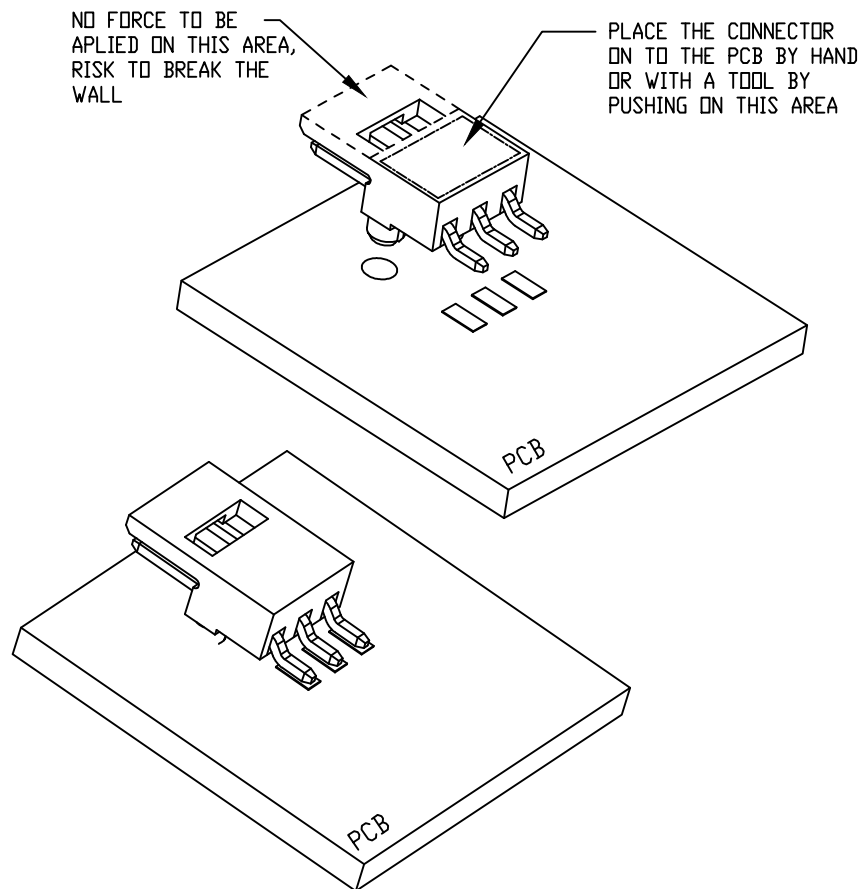
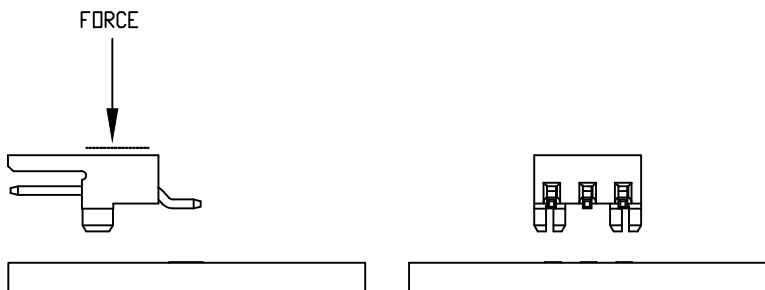
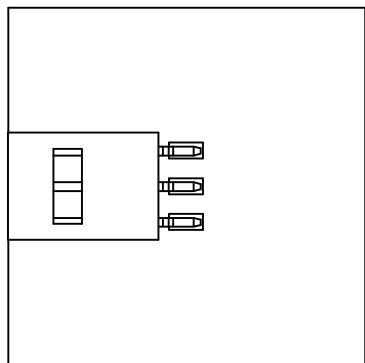


- a - MANUFACTURING PROCESS COMPATIBILITY
- THE HOUSING WILL WITHSTAND EXPOSURE TO 260°C PEAK TEMPERATURE FOR 30 SECONDES MAX IN A CONVECTION, INFRA-RED OR VAPOR PHASE OR REFLOW OVEN.
- b - LABELLING:
- MEETS PACKAGING SPECS AS PER GS-14-920
- c - THIS PRODUCT MEETS EUROPEAN DIRECTIVES AND OTHER COUNTRY REGULATIONS AS DISCRIBED IN GS-47-0004
- 7 - HOLE DIMENSION TO BE ø1.60±0.07 FOR INTERFERENCE FIT APPLICATIONS, SEE SHEET 2.
HOLE DIMENSION TO BE ø1.95±0.07 FOR NON INTERFERENCE FIT (LOCATIONAL) APPLICATIONS



mat'l. code		surface		tolerance		projection		product family	
		ISO 1302 ✓		ISO 406 ISO 1101		mm		MINITEK	
ltr		ecn no dr date		tolerances unless otherwise specified		mm		title	
S		B-19986 JCO 15.01.13		angles		.x ±0.3		MINITEK SMT HDR SR	
T		B-19995 JCO 15.01.15		linear		.xx ±0.13		POLARIZATION & LATCHING	
U		F-23052 AMA 16.01.15		±z		xxx ±0.05		scale 7:1	
		dr		J. FABRE		13.01.07		dwg no	
N		B-15804 JCO 13.08.28		enrg		J. FABRE 13.01.07		sheet 1 of 2	
P		B-16822 JCO 14.01.23		chr		JL CORDIER 13.01.07		size	
R		B-19187 LMU 14.10.24		appd		JMC 13.01.07		95000 A3	
sheet		revision		U		A		type	
index		sheet		1		2		CUSTOMER Drawing	

RECOMMENDATION TO PLACE THE CONNECTOR ONTO THE PCB



FCIconnect.com

Copyright FCI

mat'l. code		N/A		surface		ISO 1302 ✓		tolerance		ISO 406 ISO 1101		projection		product family	
ltr		ecn no		dr		date		tolerances unless otherwise specified		mm		title		MINITEK	
A		B-19986		J.FA		15.01.13		angles		linear		MINITEK SMT HDR SR		POLARIZATION & LATCHING	
								0°±x'		.00±.00x		scale 1:1		dwg no	
								dr		J.FABRE		15.01.07		sheet of 2	
								enrg		L.MULIN		15.01.07		size	
								chr		J.COMPAGNON		15.01.12		A3	
								appd		JCO		15.01.13		type	
sheet		revision												Product Customer Drawing	
index		sheet													



Mouser Electronics

Authorized Distributor

Click to View Pricing, Inventory, Delivery & Lifecycle Information:

[FCI / Amphenol:](#)

[95000-006](#) [95000-116LF](#) [95000-104](#) [95000-103](#) [95000-106](#) [95000-003TRLF](#) [95000-004TRLF](#) [95000-006TRLF](#)
[95000-008TRLF](#) [95000-106TRLF](#) [95000-005](#) [95000-010](#) [95000-108](#) [95000-112](#) [95000-116](#) [95000-003LF](#) [95000-004LF](#) [95000-005LF](#) [95000-006LF](#) [95000-008LF](#) [95000-010LF](#) [95000-013LF](#) [95000-014LF](#) [95000-105LF](#) [95000-107LF](#) [95000-108LF](#) [95000-109LF](#) [95000-110LF](#) [95000-112LF](#) [95000-504LF](#) [95000-508LF](#) [95000-007LF](#) [95000-009LF](#) [95000-009TRLF](#) [95000-011LF](#) [95000-012](#) [95000-012LF](#) [95000-015LF](#) [95000-016LF](#) [95000-103TRLF](#)
[95000-104TRLF](#) [95000-105TLF](#) [95000-111LF](#) [95000-113LF](#) [95000-113TLF](#) [95000-114LF](#) [95000-115LF](#) [95000-117LF](#) [95000-303LF](#) [95000-303TRLF](#) [95000-304LF](#) [95000-305LF](#) [95000-004](#) [95000-013TLF](#) [95000-104LF](#) [95000-103LF](#) [95000-106LF](#) [95000-009TLF](#) [95000-005TRLF](#) [95000-110TLF](#) [95000-108TRLF](#) [95000-506TRLF](#) [95000-T07TRLF](#) [95000-504TRLF](#) [95000-107TRLF](#) [95000-106TLF](#) [95000-T04TRLF](#)