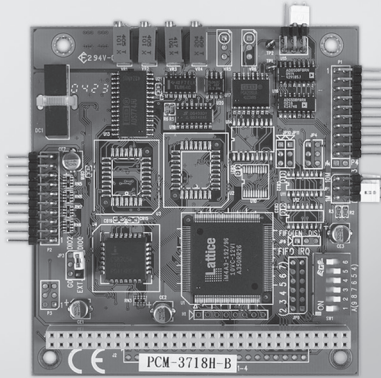


# PCM-3718H/HG/HO

# PCM-3724

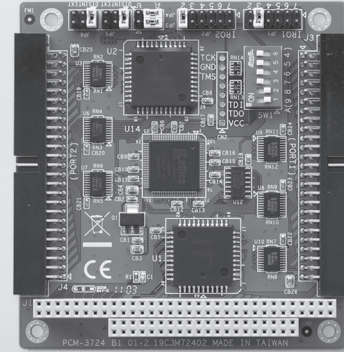
100 kS/s, 12-bit, 16-ch  
Multifunction PC/104 Module

48-ch Digital I/O PC/104  
Module



PCM-3718H/HG/HO

FCC CE RoHS



PCM-3724

FCC CE RoHS

## Specifications

### Analog Input

- Channels: 16 single-ended / 8 differential
- Resolution: 12 bits
- Max. Sampling Rate: 100 KHz\* (DMA transfer)  
\*80 kHz on P4-based (or upper) system
- Input Impedance: 10 MΩ
- Sampling Modes: Software, pacer or external
- Input Range:

PCM-3718H and PCM-3718HO	Bipolar	$\pm 10, \pm 5, \pm 2.5, \pm 1.25, \pm 0.625$
	Unipolar	$0 \sim 10, 0 \sim 5, 0 \sim 2.5, 0 \sim 1.25$
PCM-3718HG	Bipolar	$\pm 10, \pm 5, \pm 1, \pm 0.5, \pm 0.1, \pm 0.05, \pm 0.01, \pm 0.005$
	Unipolar	$0 \sim 10, 0 \sim 1, 0 \sim 0.1, 0 \sim 0.01$

### Analog Output (PCM-3718HO only)

- Channels: 1 (12 bits)
- Output Range:

Internal Reference	Unipolar (V)	$0 \sim 5, 0 \sim 10$
External Reference (V)		$0 \sim 10, 0 \sim -10$

- Slew Rate: 10 V/μs
- Output Impedance: 0.1 W max.

### Digital Input/Output

- Channels: 16, 5V/TTL
- Input Voltage: Logic 0: 0.8 V max.  
Logic 1: 2.0 V min.
- Output Voltage: Logic 0: 0.33 V max. @ 6 mA  
Logic 1: 3.84 V min. @ 6 mA

### General

- Bus Type: PC/104
- I/O Connectors: 2 x 20-pin box header
- Dimensions (L x H): 96 x 90 mm (3.8" x 3.5")
- Power Consumption: Typical: 5 V @ 180 mA  
Max.: 5 V @ 400 mA
- Operating Temperature: 0 ~ 60°C (32 ~ 140°F)
- Storage Temperature: -40 ~ 85°C (-40 ~ 185°F)

## Ordering Information

- PCM-3718H: 100 kS/s, 12-bit Multi. PC/104 Module
- PCM-3718HG: 100 kS/s, 12-bit High-gain Multi. PC/104 Module
- PCM-3718HO: 100 kS/s, 12-bit Multi. PC/104 Module w/AO

### Accessories

- ADAM-3920: 20-pin DIN-rail Flat Cable Wiring Board
- PCL-10120-1E: 20-pin Flat Cable, 1 m
- PCL-10120-2E: 20-pin Flat Cable, 2 m

## Features

- Compact size with robust design
- 48 TTL digital I/O lines
- Output status read-back
- Channels simulate 8255 PPI mode 0
- Interrupt triggering, rising/falling edge

## Specifications

### Digital Input

- Channels: 48 (shared with output)
- Compatibility: 5 V/TTL
- Input Voltage: Logic 0: 0.8 V max.  
Logic 1: 2.0 V min.
- Interrupt Capable Ch.: 2

### Digital Output

- Channels: 48 (shared with input)
- Compatibility: 5 V/TTL
- Output Voltage: Logic 0: 0.5 V max. @ 6 mA  
Logic 1: 2.0 V min. @ 6 mA

### General

- Bus Type: PC/104
- I/O Connectors: 2 x 50-pin box header
- Dimensions (L x H): 96 x 90 mm (3.8" x 3.5")
- Power Consumption: 5 V @ 90 mA
- Operating Temperature: 0 ~ 60°C (32 ~ 140°F)
- Storage Temperature: -40 ~ 85°C (-40 ~ 185°F)
- Storage Humidity: 0 ~ 90% RH, non-condensing

## Ordering Information

- PCM-3724: 48-ch Digital I/O PC/104 Module w/ 50-pin Cable

### Accessories

- ADAM-3950: 50-pin DIN-rail Flat Cable Wiring Board
- PCLD-782B: 24-ch IDI Board w/ 20-pin & 50-pin Flat Cables
- PCLD-785B: 24-ch Relay Board w/ 20-pin & 50-pin Flat Cables
- PCL-10150-1.2E: 50-pin Flat Cable, 1.2 m

# Mouser Electronics

Authorized Distributor

Click to View Pricing, Inventory, Delivery & Lifecycle Information:

[Advantech:](#)

[PCM-3724-BE](#)