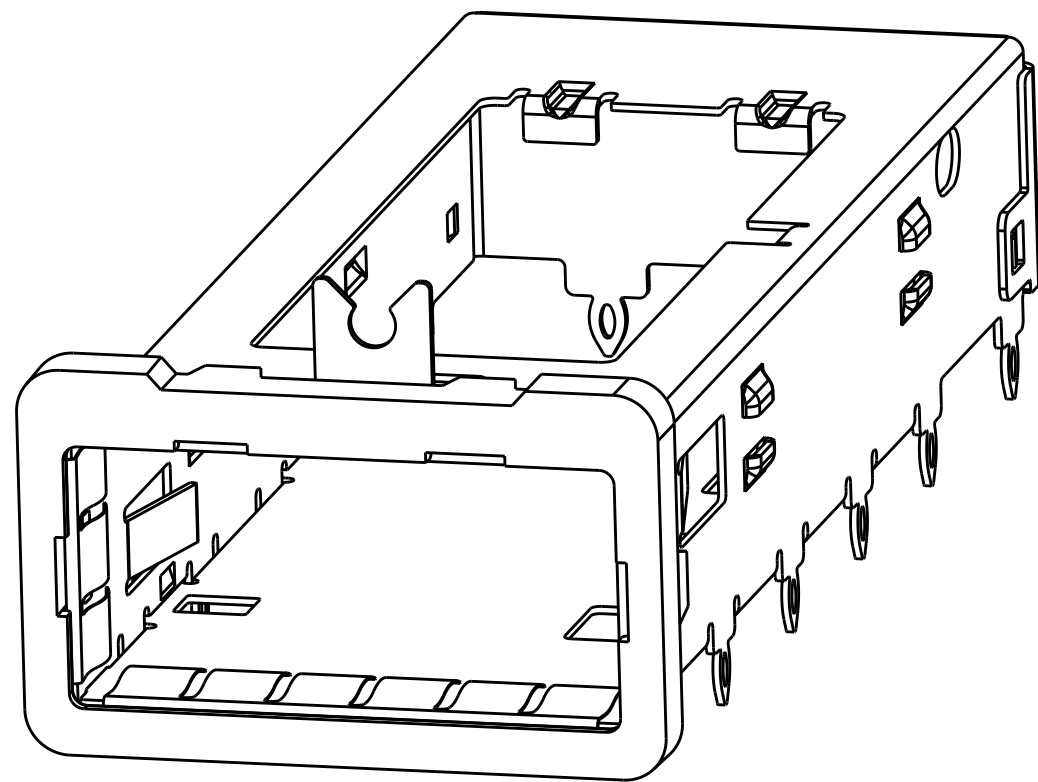
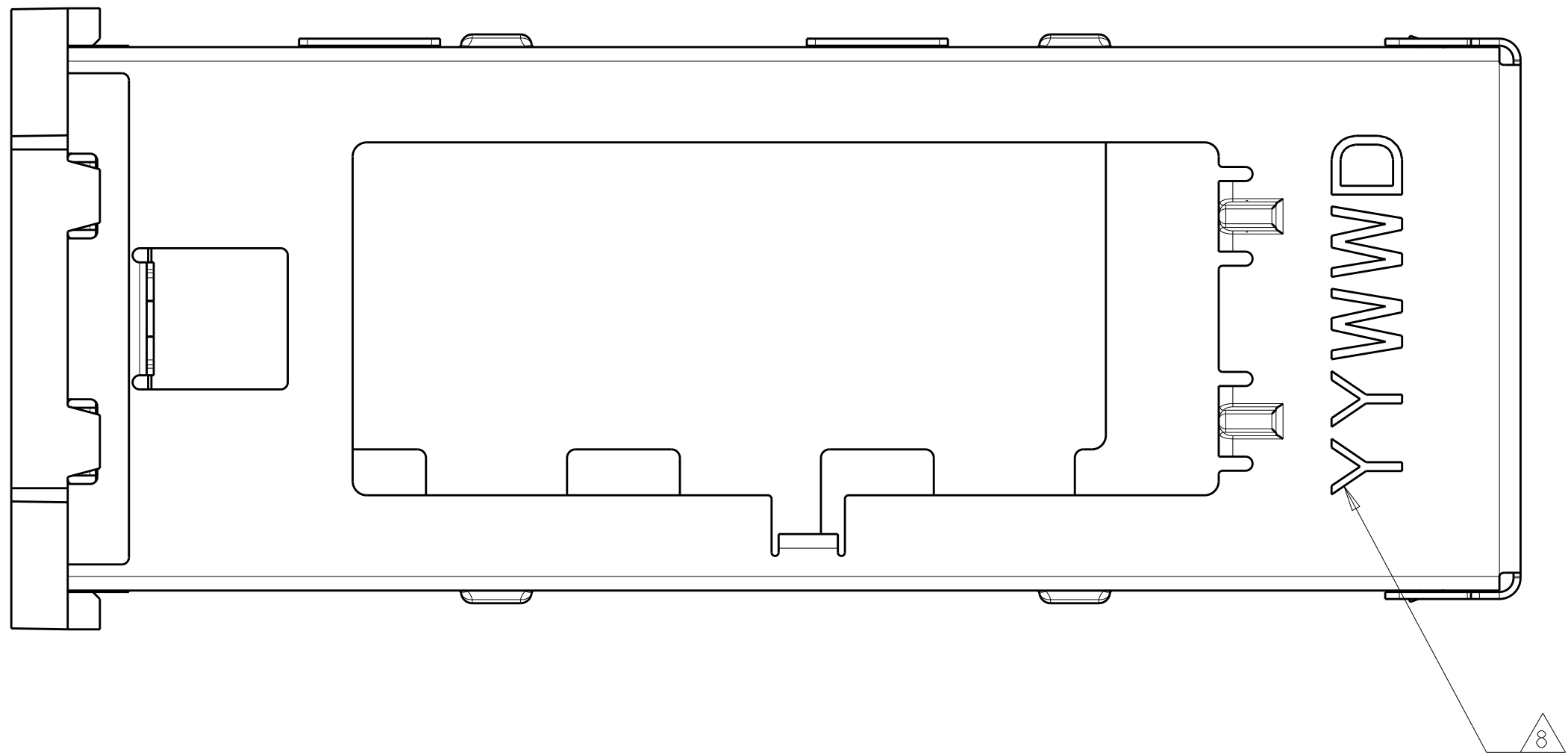


|     |      |           |     |                          |           |     |      |
|-----|------|-----------|-----|--------------------------|-----------|-----|------|
| 2   |      | 1         |     |                          |           |     |      |
| LOC | DIST | REVISIONS |     |                          |           |     |      |
| GP  | 00   | P         | LTR | DESCRIPTION              | DATE      | DWN | APVD |
|     |      | 1         |     | PRELIMINARY              | 30JUN2011 | AL  | CW   |
|     |      | 2         |     | REVISED PR ECO-14-018993 | 24PR2015  | RG  | MC   |
|     |      |           |     |                          |           |     |      |
|     |      |           |     |                          |           |     |      |

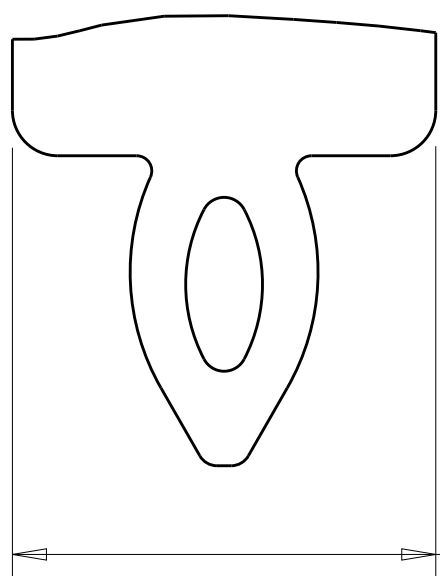
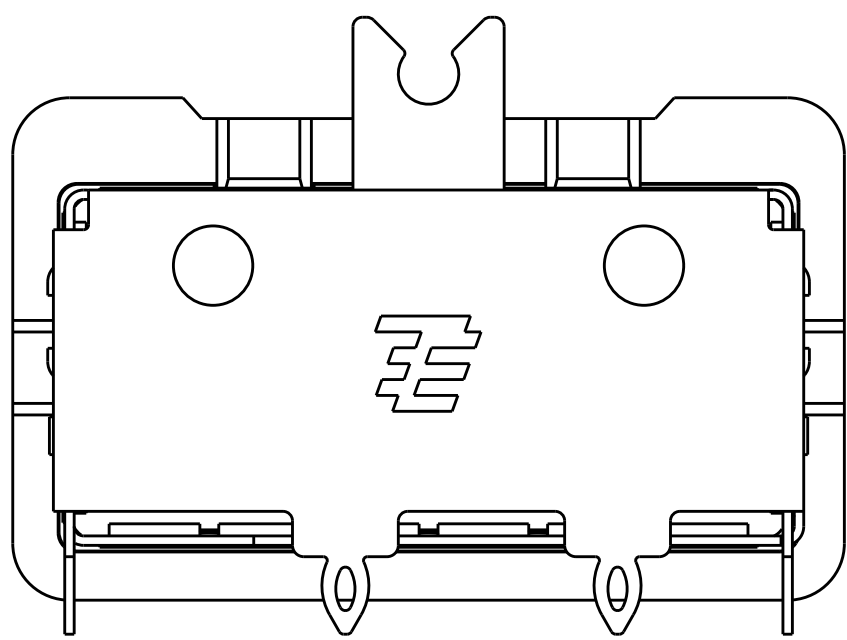
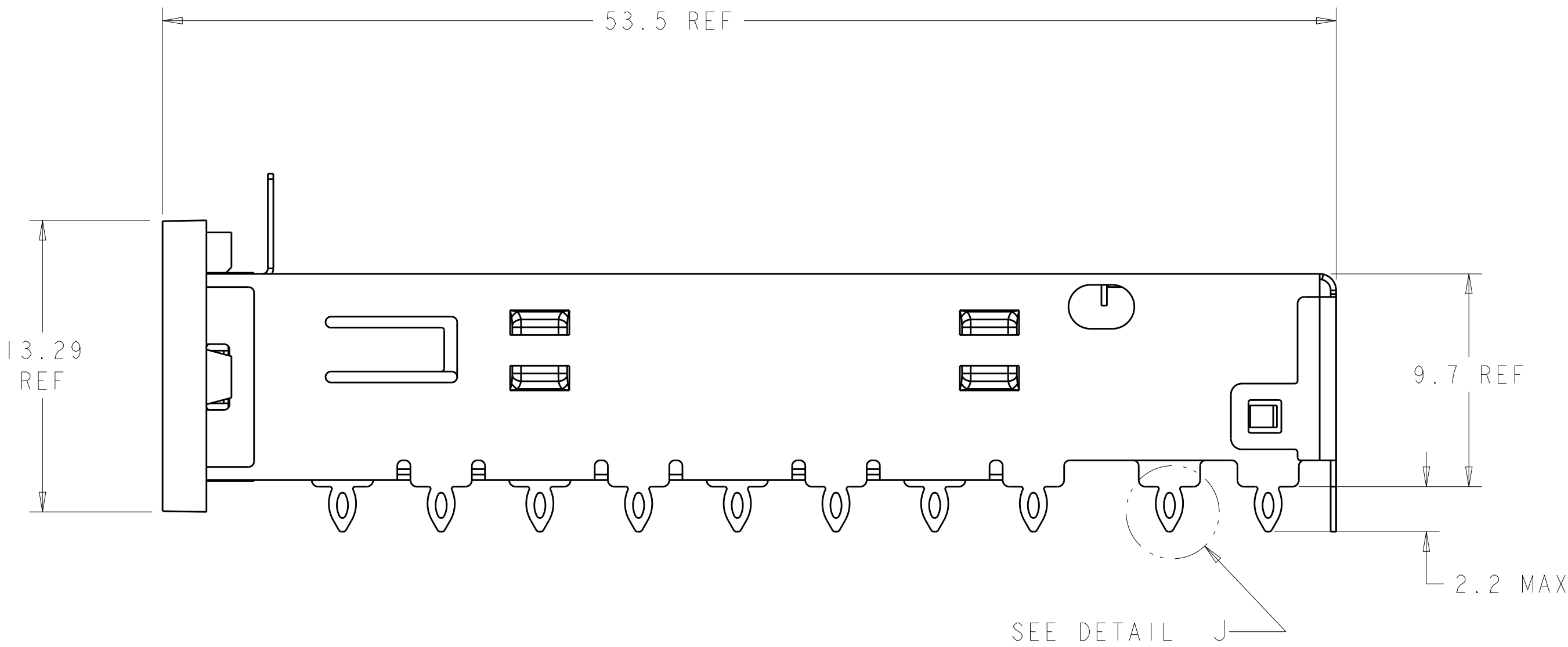
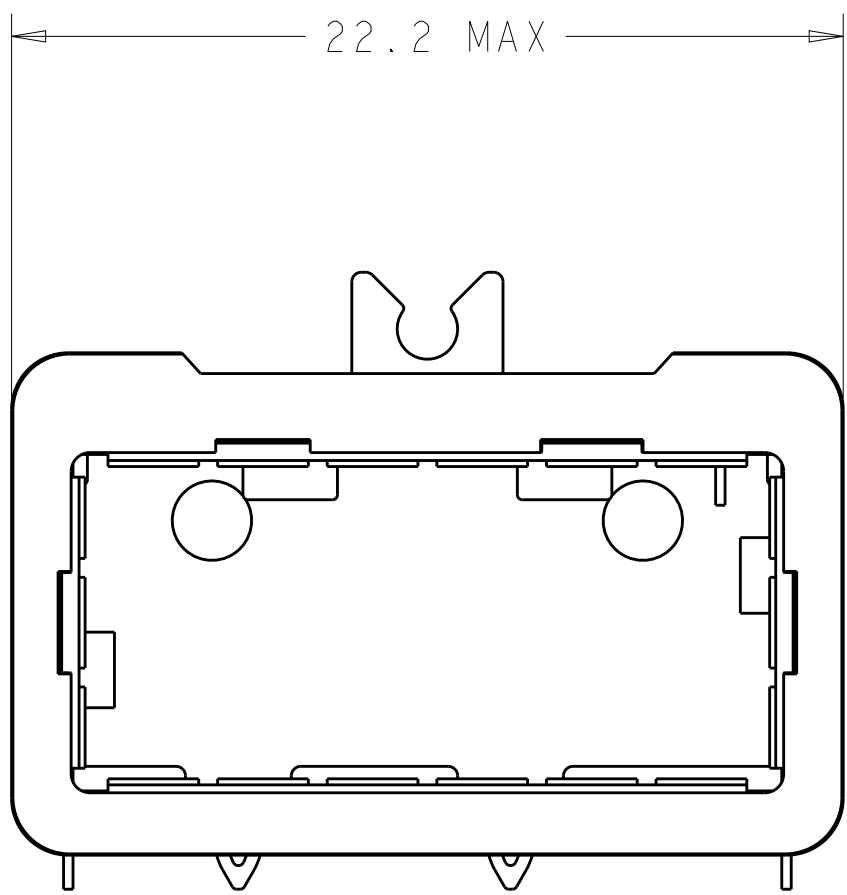


ISOMETRIC VIEW  
SCALE 4:1

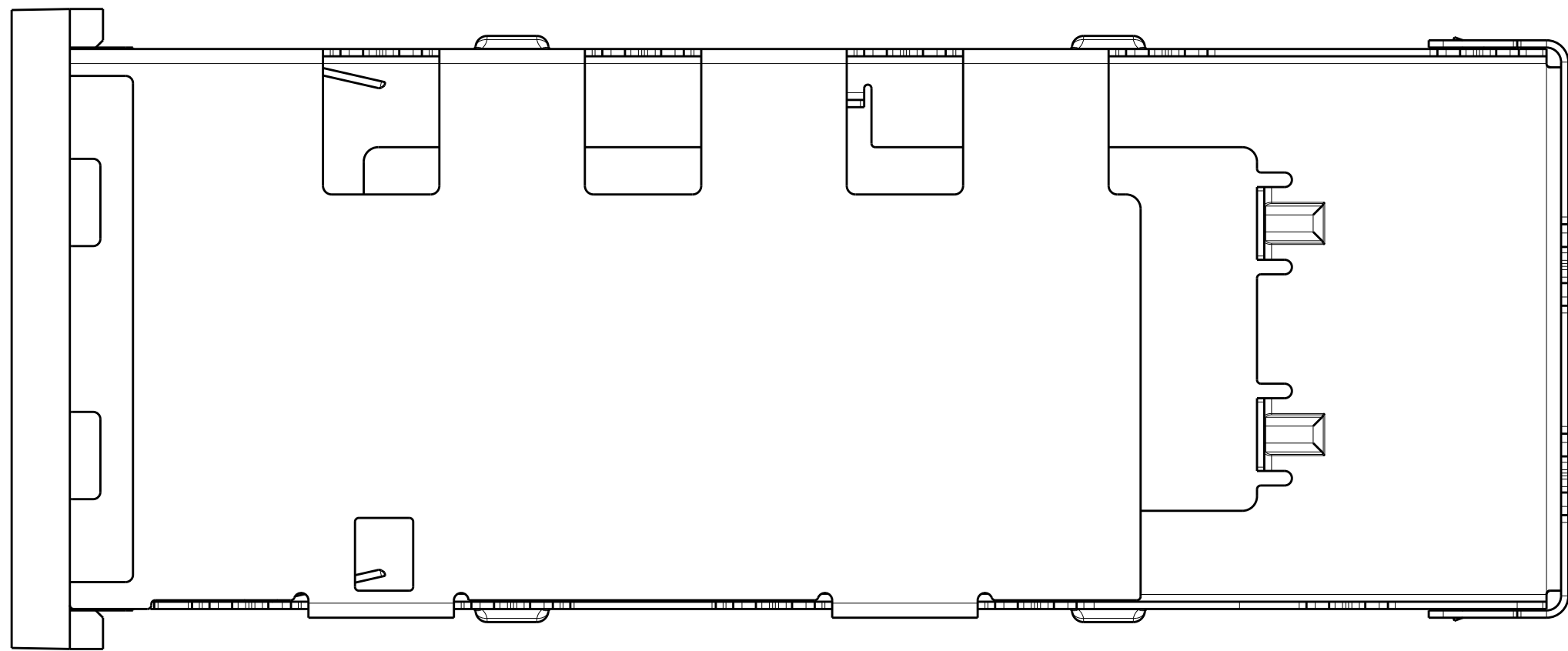


- 1 SURFACE TRACES PERMITTED WITHIN THIS LENGTH EXCEPT WHERE CAGE STANDOFFS, SHOWN IN DETAIL J, CONTACT PC BOARD.
- 2 MINIMUM PITCH DIMENSION.
3. MATES WITH QSFP MSA COMPATIBLE TRANSCEIVER.
- 4 REFERENCE APPLICATION SPEC 114-13218 FOR RECOMMENDED DRILL HOLE DIAMETER AND PLATING THICKNESS.
- 5 DATUM AND BASIC DIMENSIONS ESTABLISHED BY CUSTOMERS.
- 6 DIMENSION C IS THE NOMINAL THICKNESS OF CUSTOMER SUPPLIED PC BOARD,  
SINGLE SIDED PC BOARD MINIMUM THICKNESS: 1.45  
DOUBLE SIDED PC BOARD MINIMUM THICKNESS: 2.7.
- 7 DATUM **-A-** IS TOP SURFACE OF THE HOST BOARD.
- 8 DATE CODE (YYWWD) MARKED APPROXIMATELY AS SHOWN.
- 9 CAGE MATERIAL: 0.25 THICK NICKEL SILVER  
EMI SPRING MATERIAL: COPPER ALLOY  
FRONT FLANGE MATERIAL: ZINC ALLOY.
- 10 EMI SPRING FINISH: 2um MIN TIN  
FRONT FLANGE FINISH: 3um MIN THICK TIN OVER 1.27um MIN THICK NICKEL OVER 5.08um MIN THICK COPPER.

11. PRODUCT HAS NOT COMPLETED QUALIFICATION TESTING.



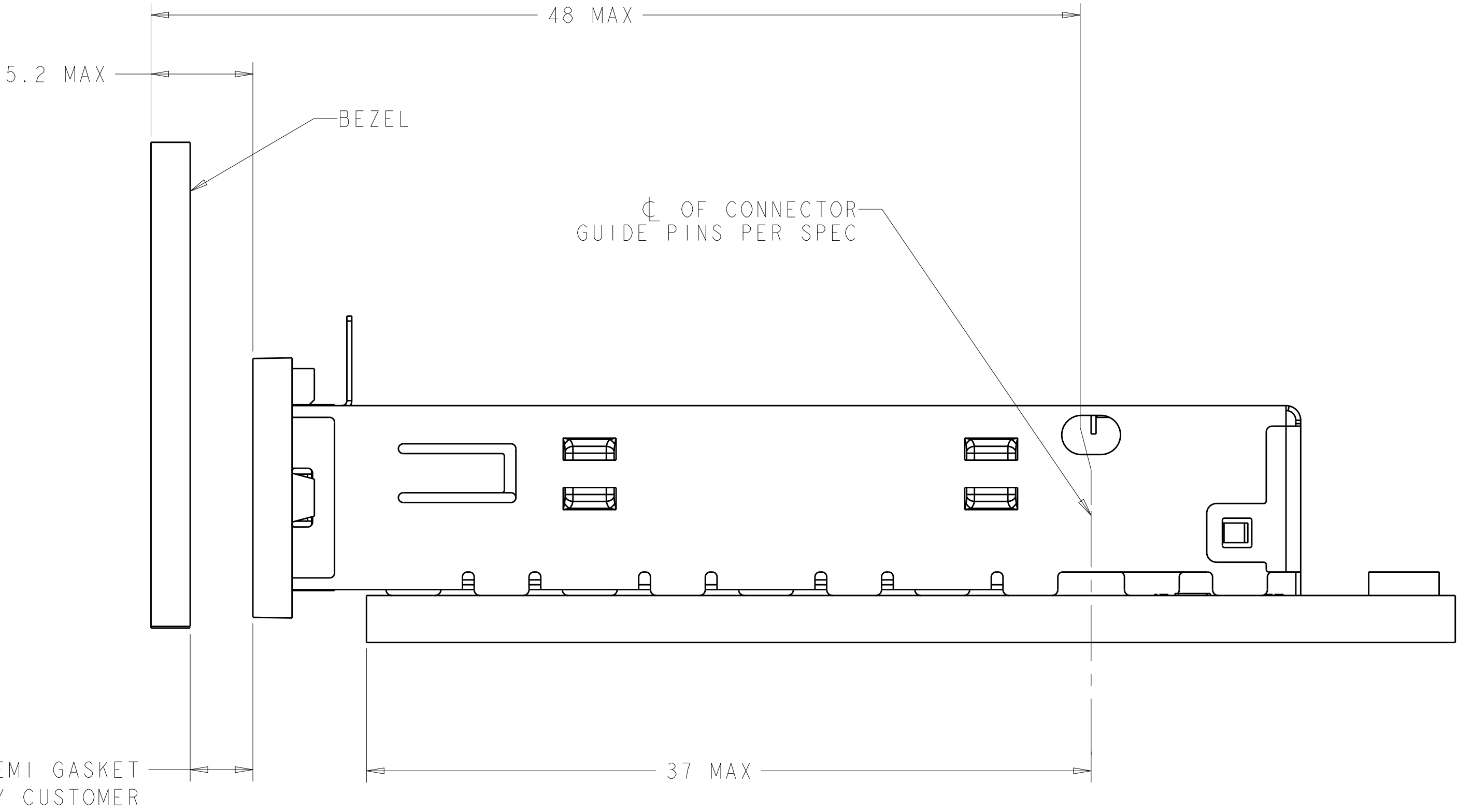
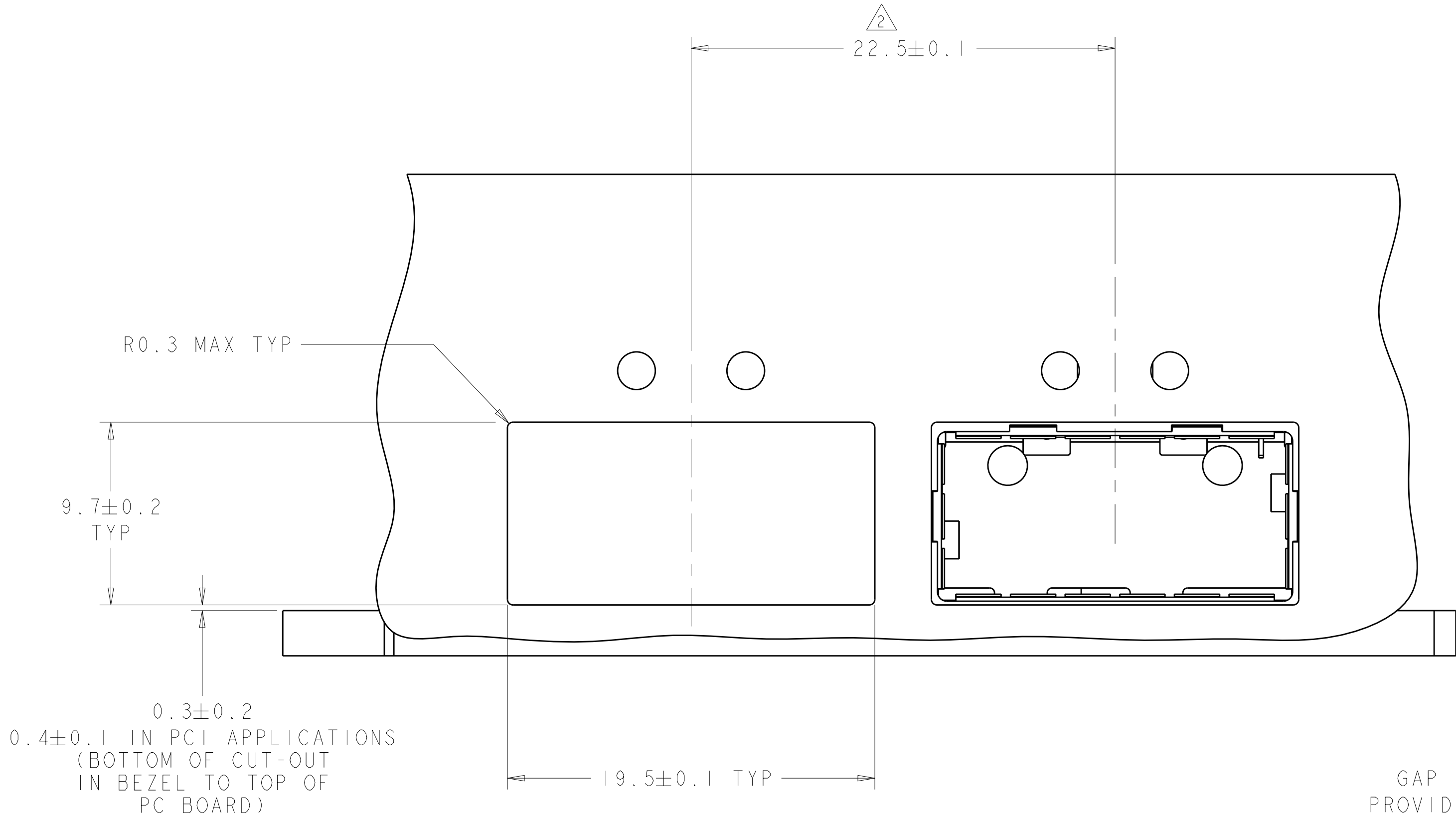
DETAIL J  
SCALE 20:1



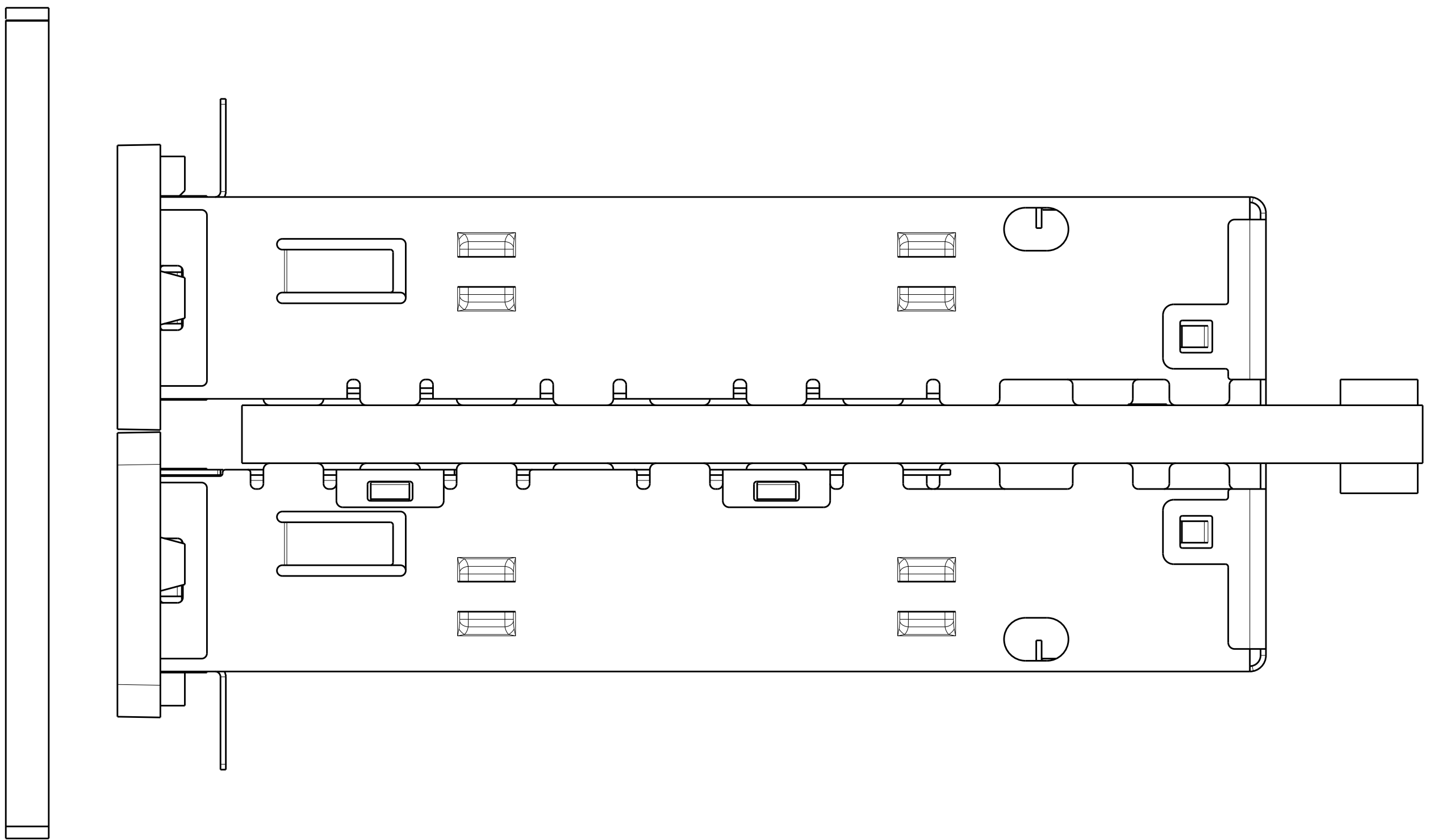
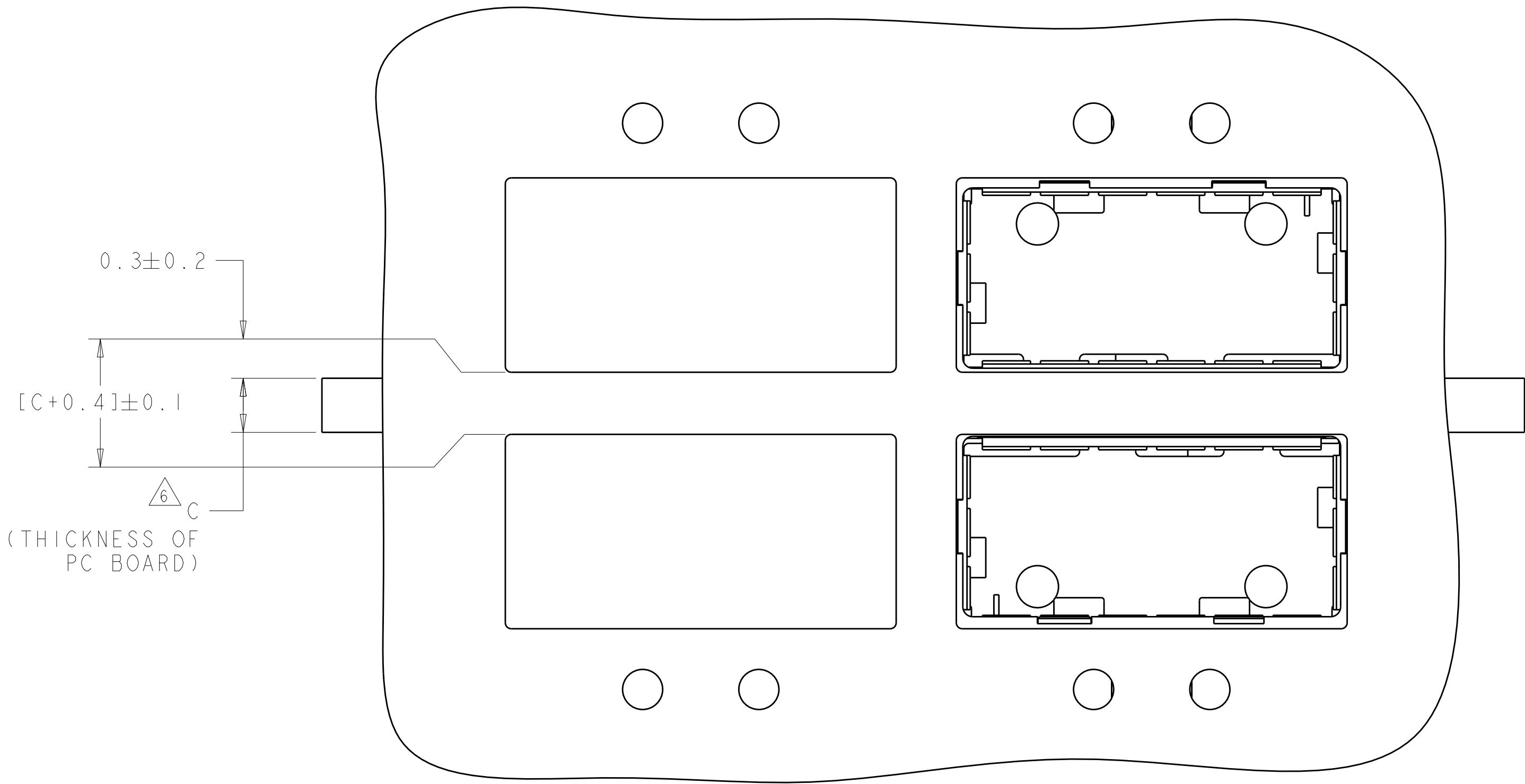
2170111-1  
PART  
NUMBER

|  |  |   |   |  |
|--|--|---|---|--|
| THIS DRAWING IS A CONTROLLED DOCUMENT. |  | DWN AL 27JUN2011  | TE Connectivity   |  |
|  |  | CHK DZ 28JUN2011  |   |  |
| DIMENSIONS:<br>mm                      |  | TOLERANCES UNLESS OTHERWISE SPECIFIED:<br>0 PLC ±.5<br>1 PLC ±0.5<br>2 PLC ±0.13<br>3 PLC ±0.013<br>4 PLC ±0.0001<br>ANGLES ±.1<br>FINISH | NAME CAGE ASSEMBLY, BEHIND BEZEL, W/ LIGHT PIPE BRACKET, QSFP |  |
|  |  |   | SIZE CAGE CODE DRAWING NO RESTRICTED TO                       |  |
| MATERIAL                               |  | PRODUCT SPEC 108-2286<br>APPLICATION SPEC 114-13218<br>WEIGHT -   | A100779C=2170111  |  |
|  |  |   | Customer Drawing SCALE 5:1 SHEET 1 OF 4 REV 2                 |  |

| LOC |  | DIST |  | REVISIONS |     |             |      |     |      |
|-----|--|------|--|-----------|-----|-------------|------|-----|------|
| GP  |  | 00   |  | P         | LTR | DESCRIPTION | DATE | DWN | APVD |
|     |  |      |  |           | -   | SEE SHEET 1 | -    | -   | -    |
|     |  |      |  |           |     |             |      |     |      |
|     |  |      |  |           |     |             |      |     |      |
|     |  |      |  |           |     |             |      |     |      |

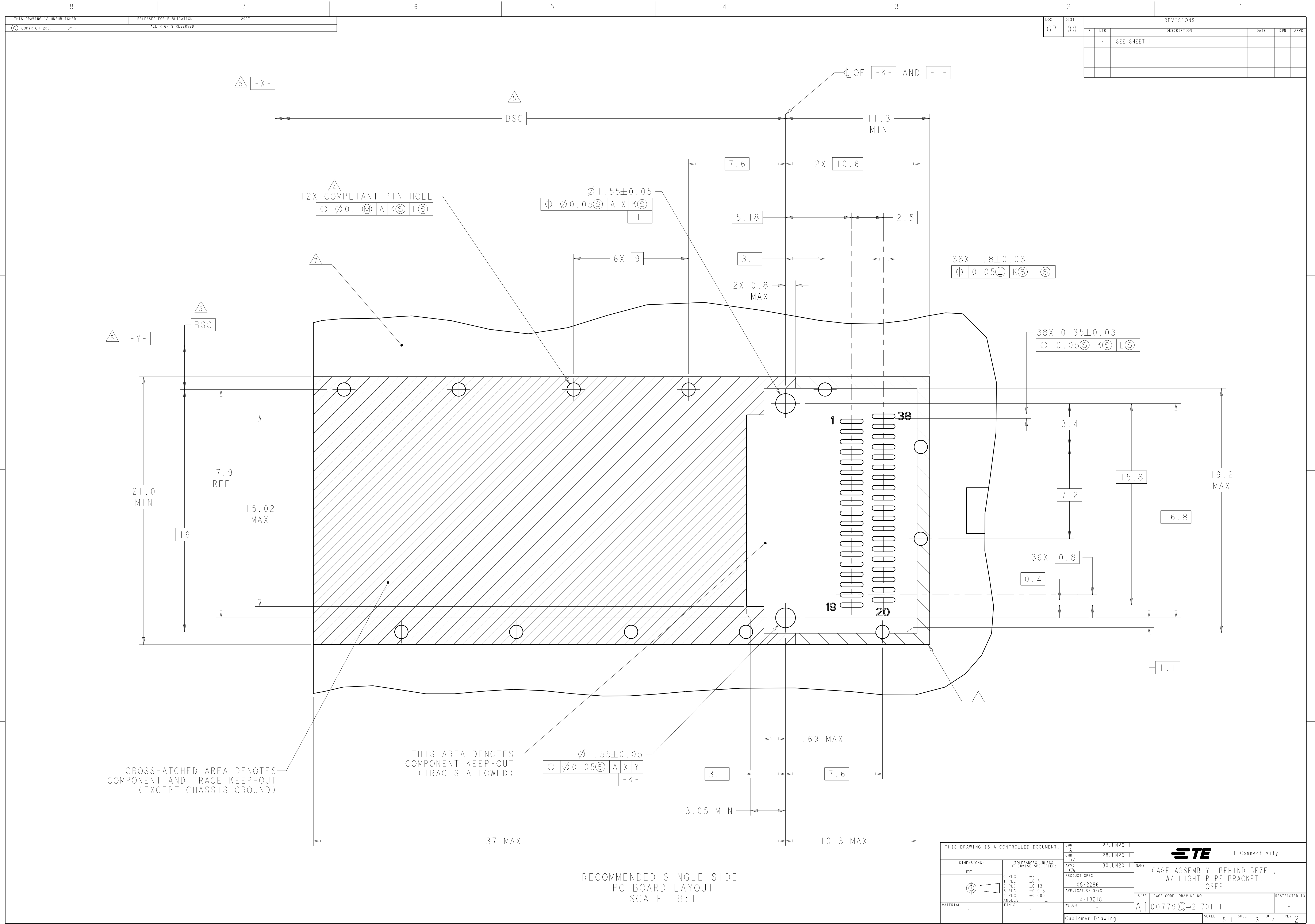


ONE SIDED CONFIGURATION





BELLY TO BELLY CONFIGURATION  
SIMILAR TO ONE SIDED EXCEPT  
WHERE NOTED

|  |  |                  |           |  |  |
|--|--|------------------|-----------|--|--|
| THIS DRAWING IS A CONTROLLED DOCUMENT. |  | DWN              | 27JUN2011 | TE Connectivity  |  |
|  |  | CHK              | 28JUN2011 |  |  |
|  |  | DZ               | 30JUN2011 | NAME   |  |
|  |  | APVD             |           |  |  |
|  |  | CW               |           | CAGE ASSEMBLY, BEHIND BEZEL,<br>W/ LIGHT PIPE BRACKET,<br>QSFP |  |
|  |  |                  |           |  |  |
|  |  | PRODUCT SPEC     |           | SIZE   |  |
|  |  | APPLICATION SPEC |           |  |  |
|  |  | 114-13218        |           | A100779C=2170111   |  |
|  |  | WEIGHT           |           |  |  |
|  |  | Customer Drawing |           | RESTRICTED TO  |  |
|  |  |                  |           |  |  |
|  |  | SCALE            | 5:1       | SHEET  |  |
|  |  |                  |           |  |  |
|  |  |                  |           | OF   |  |
|  |  |                  |           |  |  |
|  |  |                  |           | REV  |  |
|  |  |                  |           |  |  |
|  |  |                  |           | 2  |  |
|  |  |                  |           |  |  |



| LOC |  | DIST |  | REVISONS |     |             |      |
|-----|--|------|--|----------|-----|-------------|------|
| GP  |  | 00   |  | P        | LTR | DESCRIPTION | DATE |
|     |  |      |  | -        | -   | SEE SHEET 1 | -    |
|     |  |      |  |          |     |             |      |
|     |  |      |  |          |     |             |      |
|     |  |      |  |          |     |             |      |
|     |  |      |  |          |     |             |      |

|   |  |  |  |            |           |   |  |               |  |
|---|--|--|--|------------|-----------|---|--|---------------|--|
| THIS DRAWING IS A CONTROLLED DOCUMENT.  |  |  |  | OWN<br>AL  | 27JUN2011 |  TE Connectivity |  |               |  |
|   |  |  |  | CHR<br>DZ  | 28JUN2011 |   |  |               |  |
|   |  |  |  | APVD<br>CW | 30JUN2011 |   |  |               |  |
|   |  |  |  | NAME       |           |   |  |               |  |
| DIMENSIONS:   |  | TOLERANCES UNLESS OTHERWISE SPECIFIED: |  |            |           | CAGE ASSEMBLY, BEHIND BEZEL,<br>W/ LIGHT PIPE BRACKET,<br>QSFP  |  |               |  |
| mm  |  | 0 PLC ±.0                              |  |            |           | PRODUCT SPEC  |  |               |  |
|  |  | 1 PLC ±0.5                             |  |            |           | 108-2286  |  |               |  |
|   |  | 2 PLC ±0.13                            |  |            |           | APPLICATION SPEC  |  |               |  |
|   |  | 3 PLC ±0.013                           |  |            |           | 114-13218   |  |               |  |
|   |  | 4 PLC ±0.0001                          |  |            |           | SIZE  |  |               |  |
|   |  | ANGLES                                 |  |            |           | CAGE CODE   |  |               |  |
| MATERIAL  |  | FINISH                                 |  | WEIGHT     |           | DRAWING NO  |  | RESTRICTED TO |  |
| -   |  | -                                      |  | -          |           | A100779C=2170111  |  | -             |  |
| Customer Drawing  |  |  |  |            |           | SCALE   |  | SHEET         |  |
|   |  |  |  |            |           | 5:1   |  | 3 OF 4        |  |
|   |  |  |  |            |           |   |  | REV           |  |
|   |  |  |  |            |           |   |  | 2             |  |

4805 (3/11)

# Mouser Electronics

Authorized Distributor

Click to View Pricing, Inventory, Delivery & Lifecycle Information:

[TE Connectivity:](#)

[2170111-1](#)