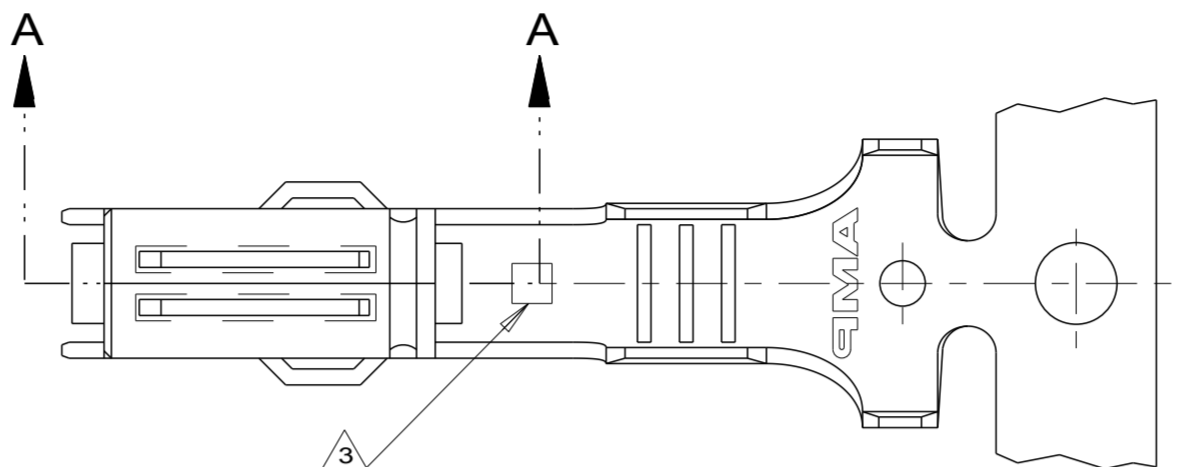
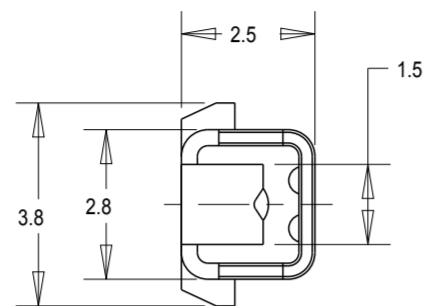


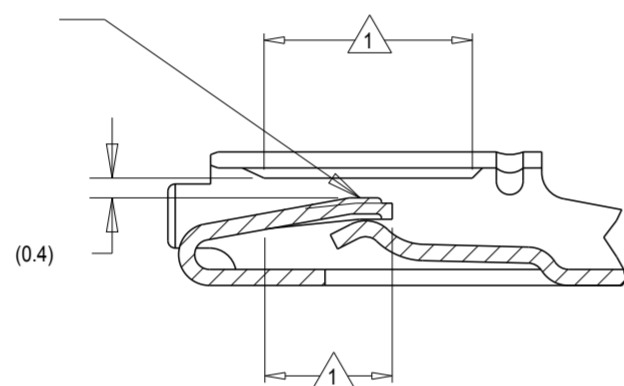
THIS DRAWING IS UNPUBLISHED. RELEASED FOR PUBLICATION
 © COPYRIGHT BY ALL RIGHTS RESERVED.

REVISIONS				
P	LTR	DESCRIPTION	DATE	APVD
H5		REVISED PER ECO-16-011163	08SEP2016	DD AH
H6		REVISED PER ECO-17-014752	11OCT2017	JMS AH

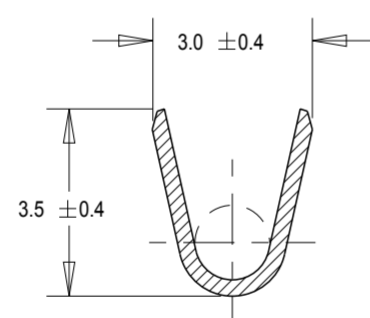
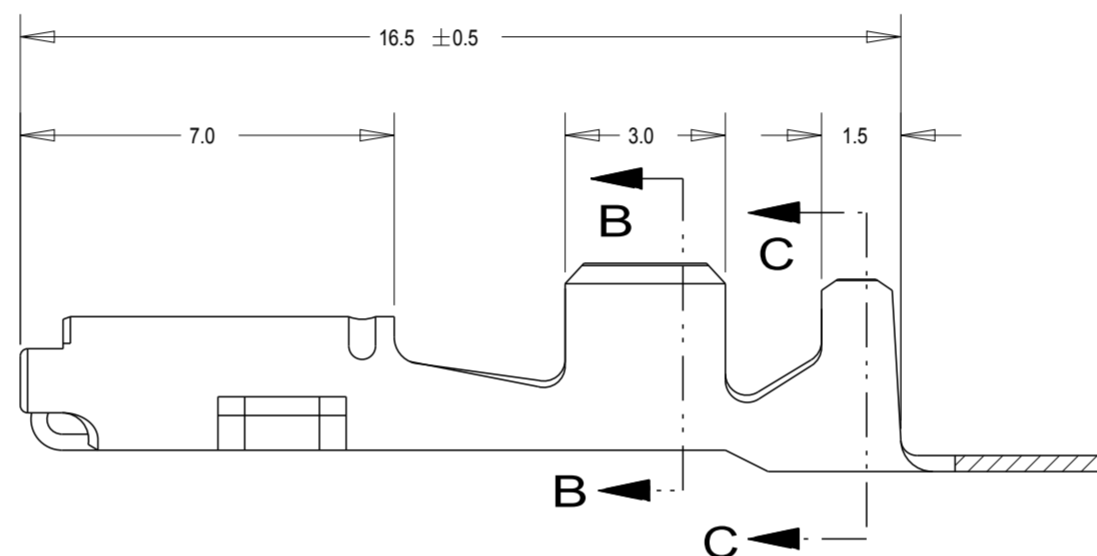


- 1 0.00076 MINIMUM THICK GOLD PLATE OVER 0.0013 MINIMUM NICKEL PLATE.
- 2 0.0008 MINIMUM THICK PRE-TIN.
- 3 0.75 x 0.75 DIE IDENTIFICATION MARK.

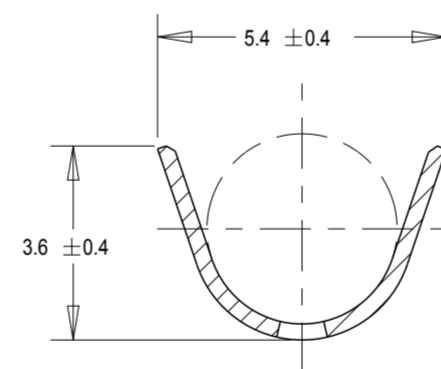
GOLD PLATING IDENTIFIED IS ON TOP SPRING



SECTION A-A



SECTION B-B



SECTION C-C

2	1.2 - 2.7	AVS 0.5 - 2.0mm (#20 -#14 AWG) ²	184030-3
1	1.2 - 2.7	AVS 0.5 - 2.0mm (#20 -#14 AWG) ²	184030-1
FINISH	INSULATION DIA	WIRE RANGE	PART NUMBER

THIS DRAWING IS A CONTROLLED DOCUMENT.		DWN KD LYLE 7/07/94	TE Connectivity	
DIMENSIONS: mm		CHK JP KUNKLE 7/26/94		
TOLERANCES UNLESS OTHERWISE SPECIFIED:		APVD JP KUNKLE 7/26/94	NAME CONTACT, RECEPTACLE, .070 TYPE	
0 PLC ± 1 PLC ±0.3 2 PLC ±0.3 3 PLC ± 4 PLC ±		PRODUCT SPEC -	SIZE A2	
MATERIAL PHOS BRZ (0.3 THK)		APPLICATION SPEC -	CAGE CODE 00779	DRAWING NO 184030
ANGLES ±		WEIGHT -	RESTRICTED TO -	SCALE 10:1
FINISH -		CUSTOMER DRAWING	SHEET 1 OF 1	REV H6