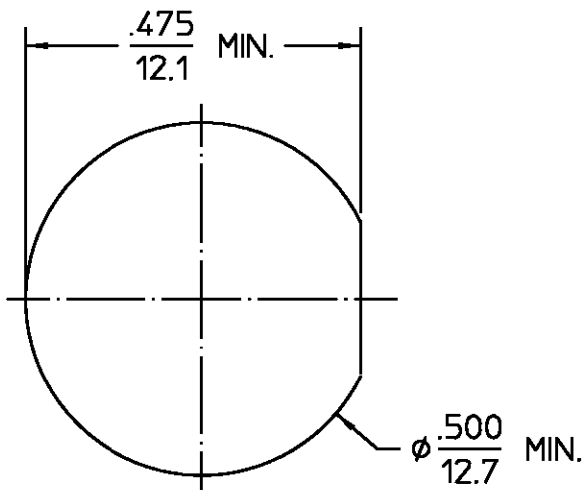


DESIGNED FOR USE WITH .085 S.R.	
CABLE ENTRY DIAMETER MINIMUM	
HOUSING	.088
DIELECTRIC	.066
CONTACT	.025

REVISIONS			
REV	DESCRIPTION	DATE	APPROVED
03 ₂	REVISED	DPG 7/23/96	DPG 7/30/96



RECOMMENDED MOUNTING
HOLE

HOUSING MOUNTING NUT LOCKWASHER	STAINLESS STEEL PER ASTM-A484 AND ASTM-A582, TYPE 303	PASSIVATE PER QQ-P-35
HOUSING	BRASS PER ASTM-B-16, HALF HARD	GOLD PLATE PER MIL-G-45204
DIELECTRIC	TFE FLUOROCARBON PER ASTM-D-1457	N/A
CENTER CONTACT	BERYLLIUM COPPER PER ASTM-B-196 OR ASTM-B-197, ALLOY C17300, CONDITION H	GOLD PLATE PER MIL-G-45204
GASKET	SILICONE RUBBER PER ZZ-R-765	N/A
COMPONENT	MATERIAL	FINISH
UNLESS OTHERWISE SPECIFIED DIMENSIONS ARE IN INCHES		
FRAC. ± 1/64	DEC. ± .005	ANGLES ± 1°
DRAWN BY B.W.C. DATE 1/27/69		
CHECKED BY P.R.B. 1/27/69		
APPD BY P.R.B. 1/27/69		
AMP Incorporated 140 Fourth Avenue Waltham, MA 02451-7599		
TITLE "OST" STRAIGHT BULKHEAD CABLE JACK DIRECT SOLDER VERSION		
SIZE B CODE IDENT NO. 26805 3104-7985-00 REV 03 ₂		
SCALE 4:1		
SHEET 1 OF 1		

.XXX = in
XX.X = mm (REF)

Mouser Electronics

Authorized Distributor

Click to View Pricing, Inventory, Delivery & Lifecycle Information:

[TE Connectivity:](#)

[3104-7985-00](#)