

4

3

2

1

THIS DRAWING IS UNPUBLISHED.

RELEASED FOR PUBLICATION

20

© COPYRIGHT 20 BY -

ALL RIGHTS RESERVED.

LOC -

DIST -

REVISIONS

P	LTR	DESCRIPTION	DATE	DWN	APVD
	A	RELEASE PER ECO 13-014783	18SEP2013	PP	OL
	A1	REVISED PER ECR-14-000133	22JAN2014	YR	OL

NOTES:

1. MATERIAL: STAINLESS STEEL
2. MUST COMPLY WITH DIRECTIVE 2002/95/EC (RoHS)08 MAX.
3. TO BE USED INLINE WITH Z50 ZHAGA COVERS.
4. TO BE USED OPTIC INTERFACE, SEE SHEET 2.

Technical drawing showing dimensions (mm):

- Top view: $\phi 22,8$ (outer diameter), $\phi 28,3$ (inner diameter), $\phi 21,0$ (central hole diameter), $\phi 3,2$ (mounting hole diameter), $17,6$ (width of central section), $35,0$ (width of mounting tabs), $40,9$ (total width), $6,5$ (height of mounting tabs).
- Side view: $1,50$ (height of top flange), $5,20$ (height of central section), $1,95$ (height of bottom flange).
- Detail view: $0,50$ (height of mounting tabs).

PART NUMBER
2213349-1

THIS DRAWING IS A CONTROLLED DOCUMENT.

DWN M.V.ESSEN 18JAN2013

CHK M.V.ESSEN 18JAN2013

APVD O.I.FLJNSE 22JAN2013

PRODUCT SPEC

108-133013

APPLICATION SPEC

114-32105

WEIGHT -

CUSTOMER DRAWING

TE Connectivity

NAME	LUMAWISE LED HOLDER OPTIC CLIP Z50, TYPE 2
------	--

SIZE	CAGE CODE	DRAWING NO	RESTRICTED TO
A3	00779	C-2213349	-

SCALE	SHEET	OF	REV
3:1	1	2	A1

DIMENSIONS:

mm

TOLERANCES UNLESS OTHERWISE SPECIFIED:

0 PLC	\pm
1 PLC	\pm
2 PLC	\pm
3 PLC	\pm
4 PLC	\pm
ANGLES	\pm

MATERIAL

-

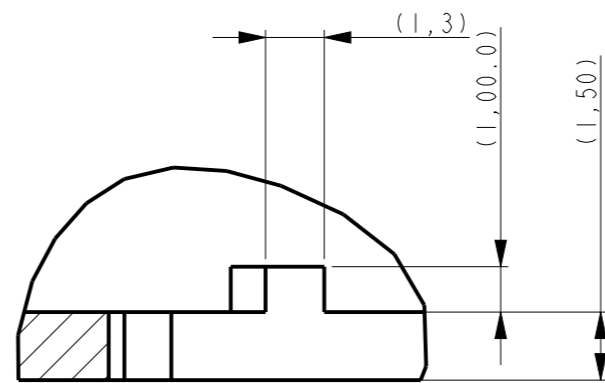
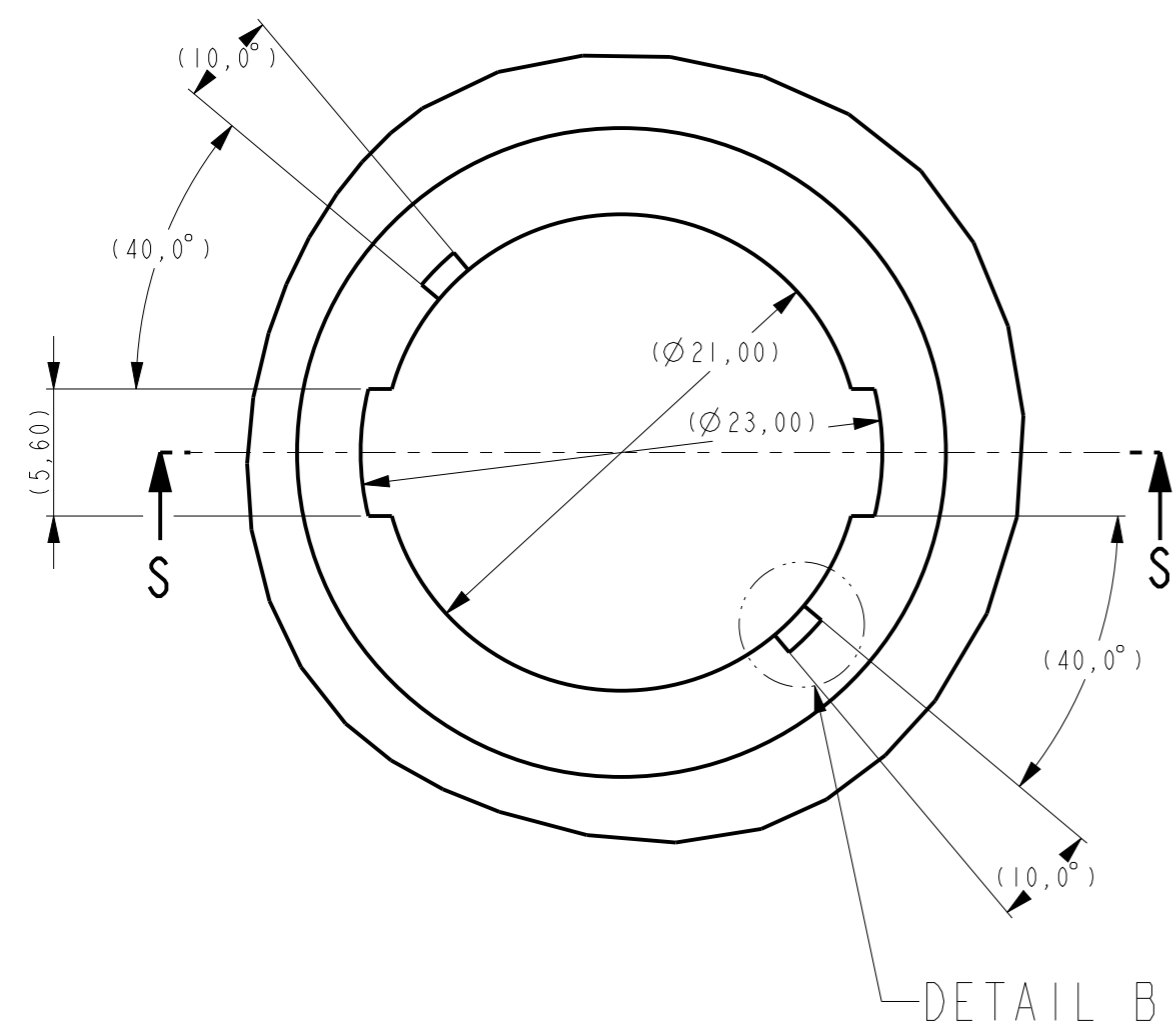
FINISH

-

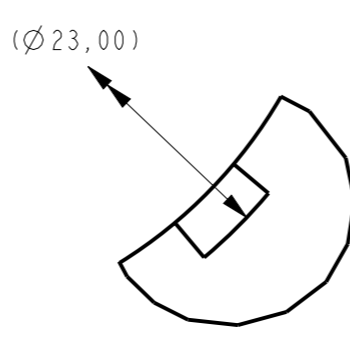
1470-19 (3/11)

LOC	DIST	REVISIONS			
P	LTR	DESCRIPTION	DATE	DWN	APVD
-	-	SEE SHEET 1			

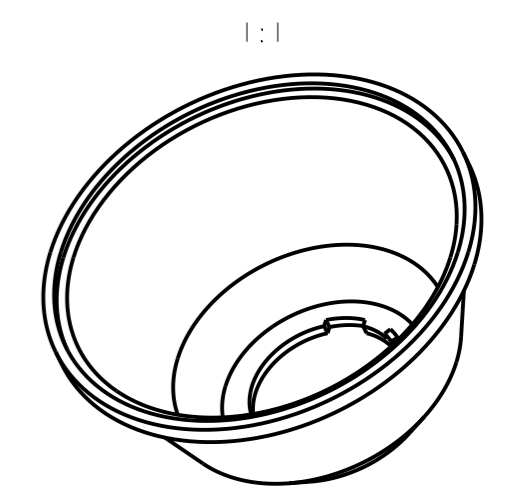
RECOMMENDED OPTIC INTERFACE



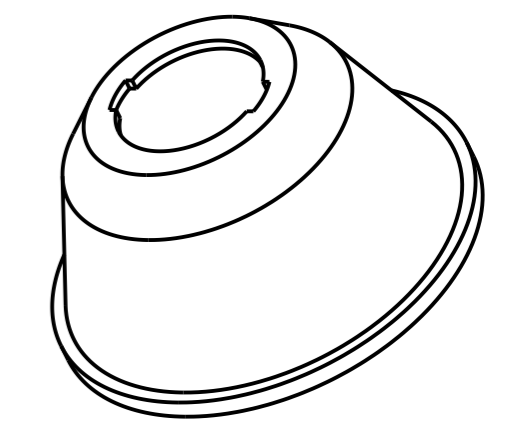
DETAIL A
6:1



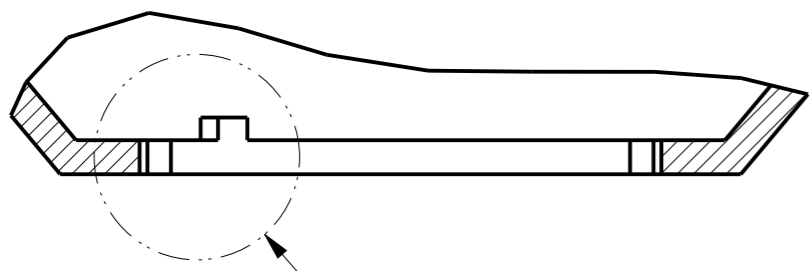
DETAIL B
6:1



1:1



1:1



SECTION S-S
DETAIL A

THIS DRAWING IS A CONTROLLED DOCUMENT.		DWN M.V.ESSEN 18JAN2013	TE Connectivity		
DIMENSIONS: mm		CHK M.V.ESSEN 18JAN2013			
TOLERANCES UNLESS OTHERWISE SPECIFIED:		APVD O.I.FLJNSE 22JAN2013	NAME LUMAWISE LED HOLDER OPTIC CLIP Z50, TYPE 2		
0 PLC ±- 1 PLC ±- 2 PLC ±- 3 PLC ±- 4 PLC ±- ANGLES ±-		PRODUCT SPEC 108-133013	SIZE A3	CAGE CODE 00779	DRAWING NO C-2213349
MATERIAL -		APPLICATION SPEC 114-32105	RESTRICTED TO -		
FINISH -		WEIGHT -	SCALE 3:1		
		CUSTOMER DRAWING	SHEET 2 OF 2		
			REV A1		

Mouser Electronics

Authorized Distributor

Click to View Pricing, Inventory, Delivery & Lifecycle Information:

[TE Connectivity:](#)

[2213349-1](#)