

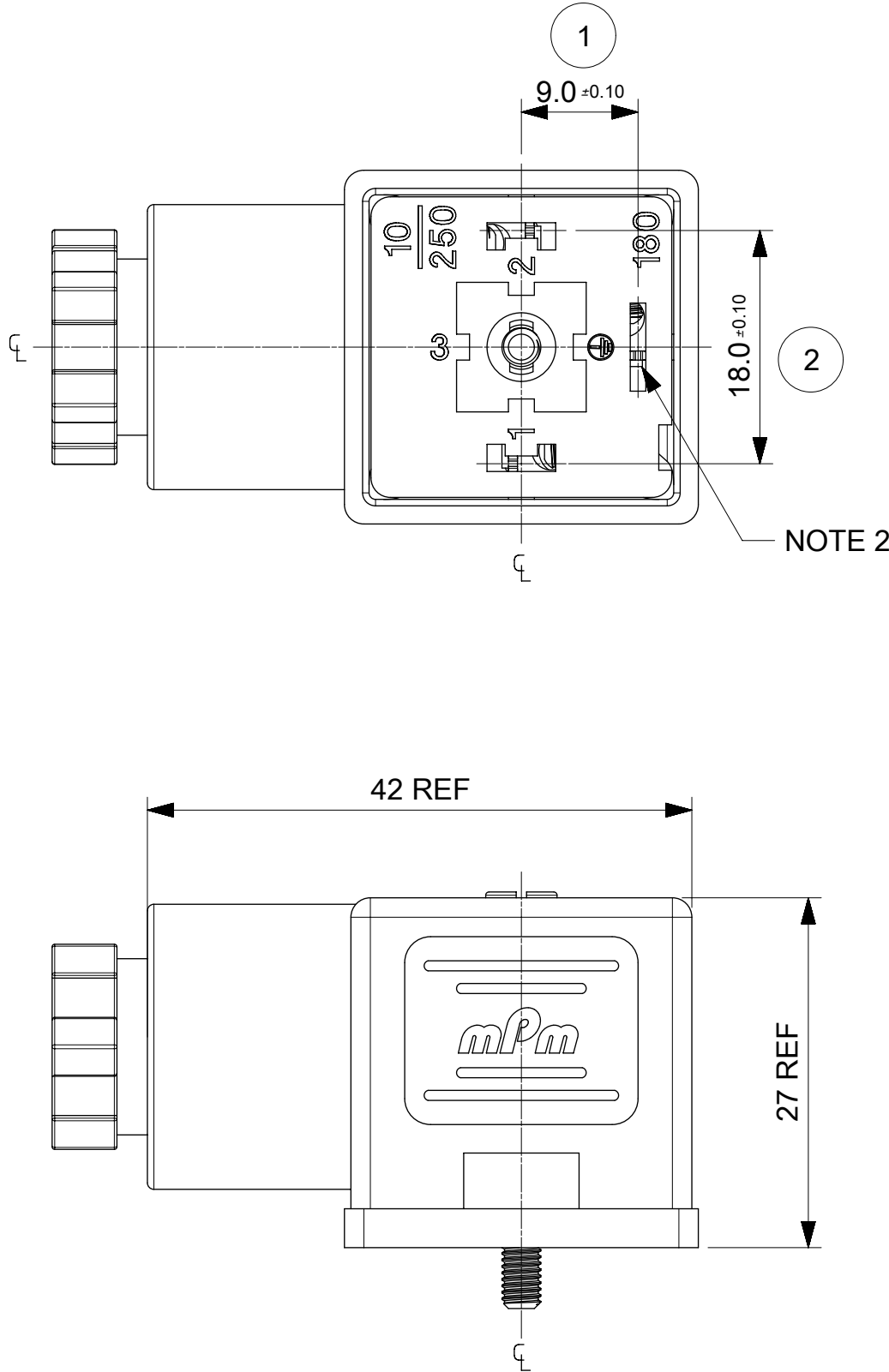
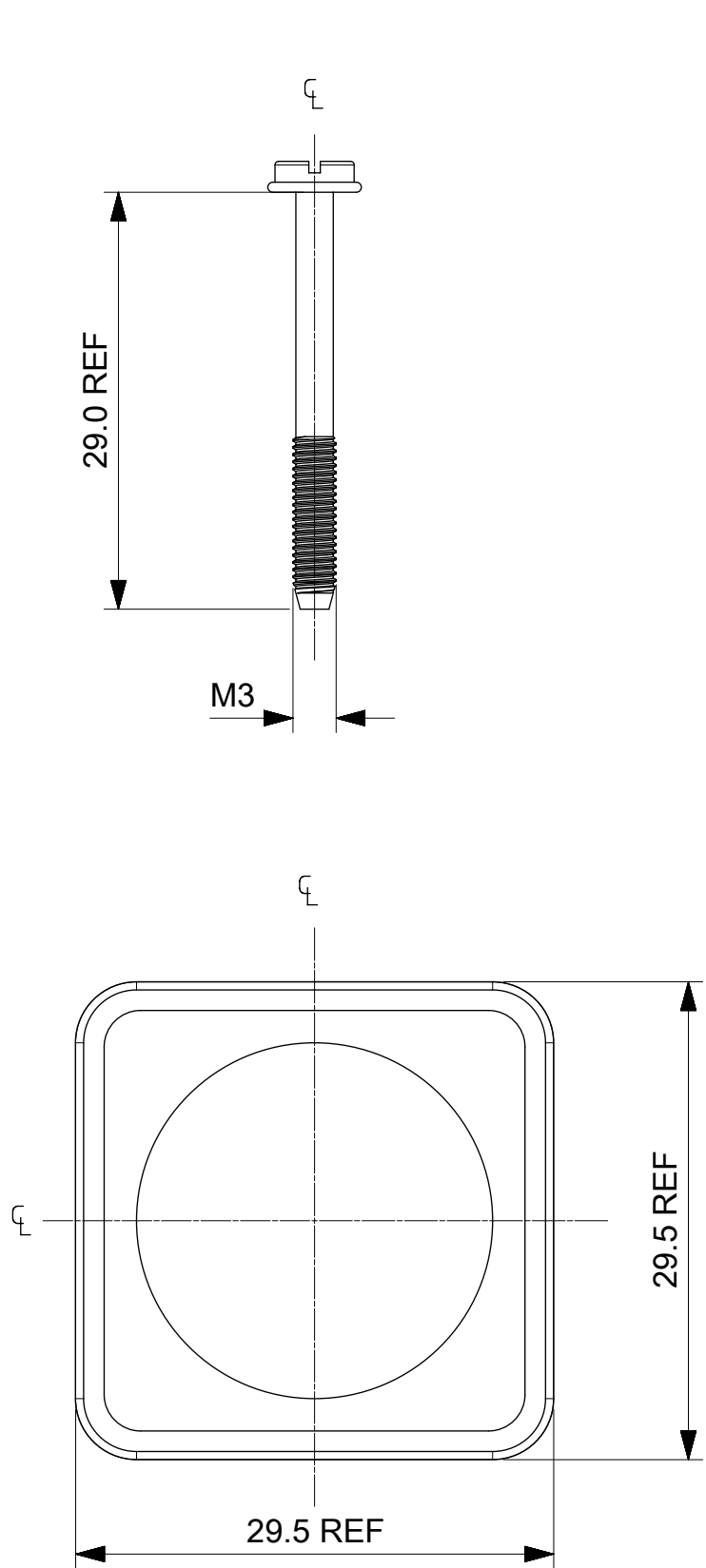
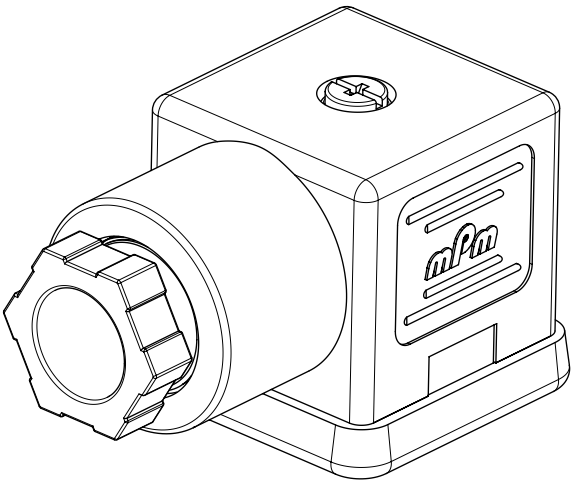
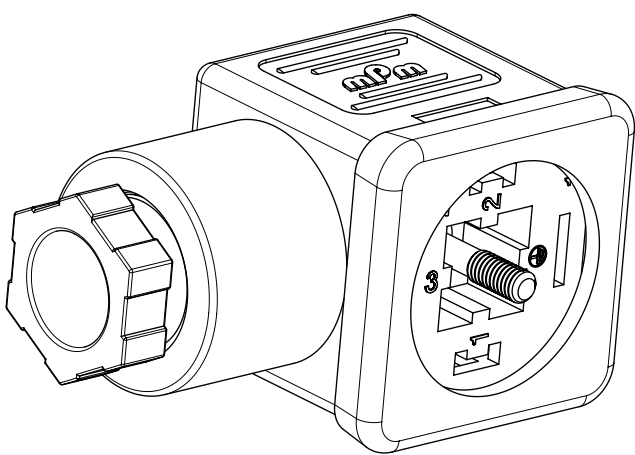
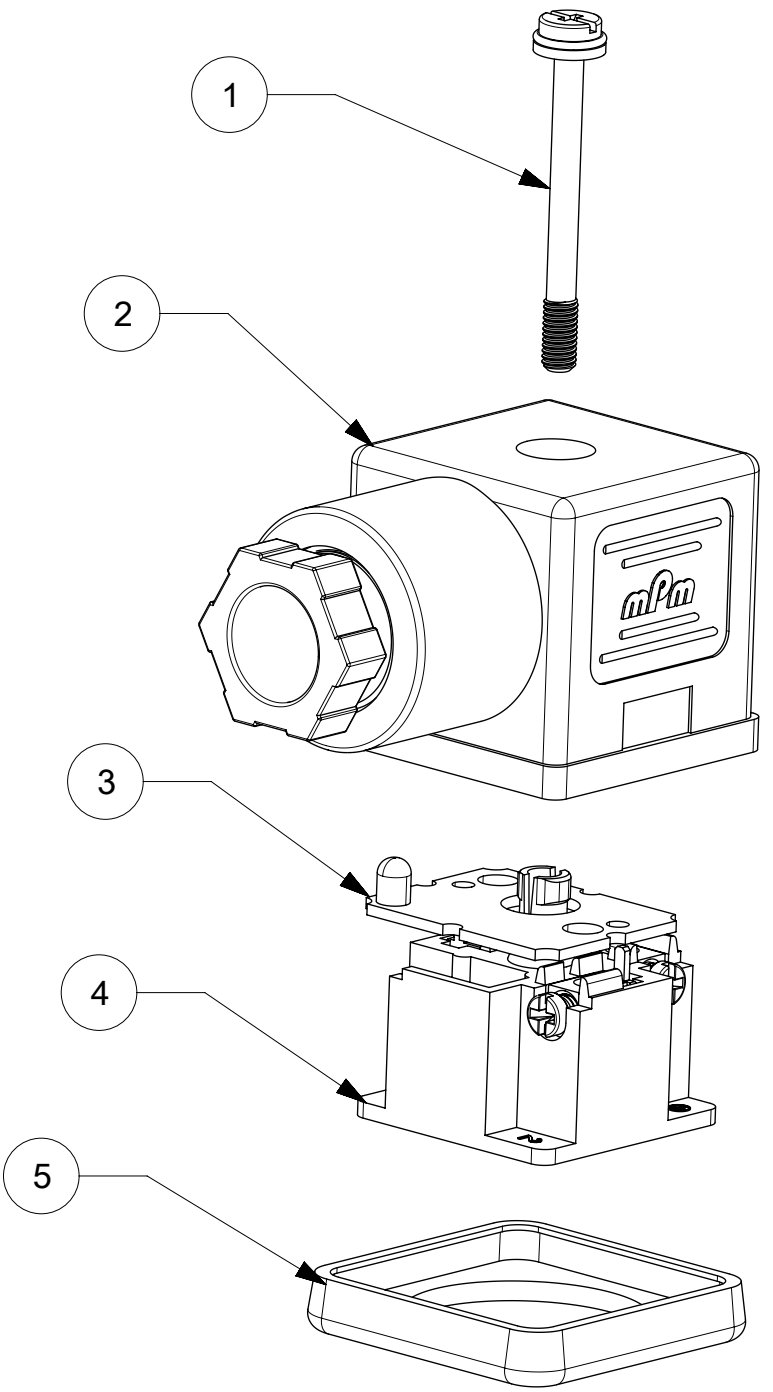
S18 3 09 T A1 2 2 \*\*

SERIES \_\_\_\_\_  
S18= INTERNAL THREAD FORM A  
POLES \_\_\_\_\_  
2= 2 POLE & 3= 3 POLE  
THREAD \_\_\_\_\_  
09= PG9, 11= PG11, M6=M16x1.5, M0= M20x1.5, 12= 1/2" GAS 13= 1/2" NPTF  
MATERIAL AND HOUSING COLOUR \_\_\_\_\_  
G= PA6 GRAY, N= PA6 BLACK, W= PA6 BLACK V0, T= PA12 TRANSPARENT,  
B= PA6 WHITE  
CIRCUIT \_\_\_\_\_  
SEE DETAILS IN CATALOGUE  
VOLTAGE \_\_\_\_\_  
SEE DETAILS IN CATALOGUE  
SCREW AND GASKET \_\_\_\_\_

1= NBR PROFILE GASKET & SCREW  
2= NBR FLAT GASKET & SCREW  
3= WHITE SILICON PROFILE GASKET & SCREW  
4= WHITE SILICON FLAT GASKET & SCREW  
A= NBR PROFILE GASKET & SCREW +2mm  
B= NBR FLAT GASKET & SCREW +2mm  
P= SCREW WITH GROMMET (IP67) &  
NBR INTEGRATED GASKET ASSEMBLED


NON STANDARD COMPONENTS  
14= PACKED IN NEUTRAL BAG  
23= FULLY MOUNTED  
54= WITH PIN 3 AS EARTH  
65= SPECIAL GROMMET  
67= NEUTRAL PACKAGING  
84= TAMPO PRINTING ON DIODE  
3F= 24DC W/O TAMPO PRINTING  
5J= BOXES OF 100  
5N= PACKED IN BOXES OF 200  
6U= GI BY500-800 DIODE  
AF= CENTRE SCREW MOUNTED  
AG= DIODE IN4948  
P7= IP67 COMPLIANT  
SA= UL LISTED PART  
CZ= GROMMET 4 DISCRETE WIRES

ITEM	DESCRIPTION
1	SCREW
2	COVER ASSEMBLY
3	PCB
4	INSERT ASSEMBLY
5	GASKET



- NOTES
- PLEASE SEE EXCEL SHEET 1210640002\_PDP FOR CURRENTLY CONFIGURED PART NUMBERS.  
FOR SPECIFIC PART NUMBERS PLEASE CONTACT SALES OR CONSULT THE INTELLIGENT PART NUMBER ON THE TOP LEFT OF THIS PAGE.
  - EARTH POSITION SHOWN, H12.
  - FOR PACKAGING SEE PACKAGING SPEC PK-121064-S18
  - PRODUCT SPEC: SEE PS-121201-001

LAST INSPECTION NUMBER 2

THIS DRAWING CONTAINS INFORMATION THAT IS PROPRIETARY TO MOLEX ELECTRONIC TECHNOLOGIES, LLC AND SHOULD NOT BE USED WITHOUT WRITTEN PERMISSION														
EC NO: 108491 DRWN: TCLEARY CHKD: STGRIFFIN REV: APPR: STGRIFFIN	2016/12/16	2016/12/22	GENERAL TOLERANCES (UNLESS SPECIFIED)		DIMENSION UNITS		SCALE		<b>molex<sup>®</sup></b>					
					MM		1.5:1							
			ANGULAR TOL ± °		DRWN BY		DATE		S18 SERIES INTERNAL THREAD					
			4 PLACES ±		BCAFFREY		2016/04/11							
			3 PLACES ±		CHK'D BY		DATE							
			2 PLACES ± 0.1		TCLEARY		2016/12/16							
			1 PLACE ± 0.2		APPR BY		DATE		PRODUCT CUSTOMER DRAWING					
			0 PLACES ±		STGRIFFIN		2016/04/12							
			DRAFT WHERE APPLICABLE MUST REMAIN WITHIN DIMENSIONS		DRAWING SIZE		THIRD ANGLE PROJECTION		SERIES		MATERIAL NUMBER		CUSTOMER	
					A2				121064		SEE 1210640002_PDP		GENERAL MARKET	
AE	REV						DOCUMENT NUMBER		DOC TYPE		SHEET NUMBER			
							SD-121064-002		PSD		1 OF 1			

# Mouser Electronics

Authorized Distributor

Click to View Pricing, Inventory, Delivery & Lifecycle Information:

Molex:

1210640716