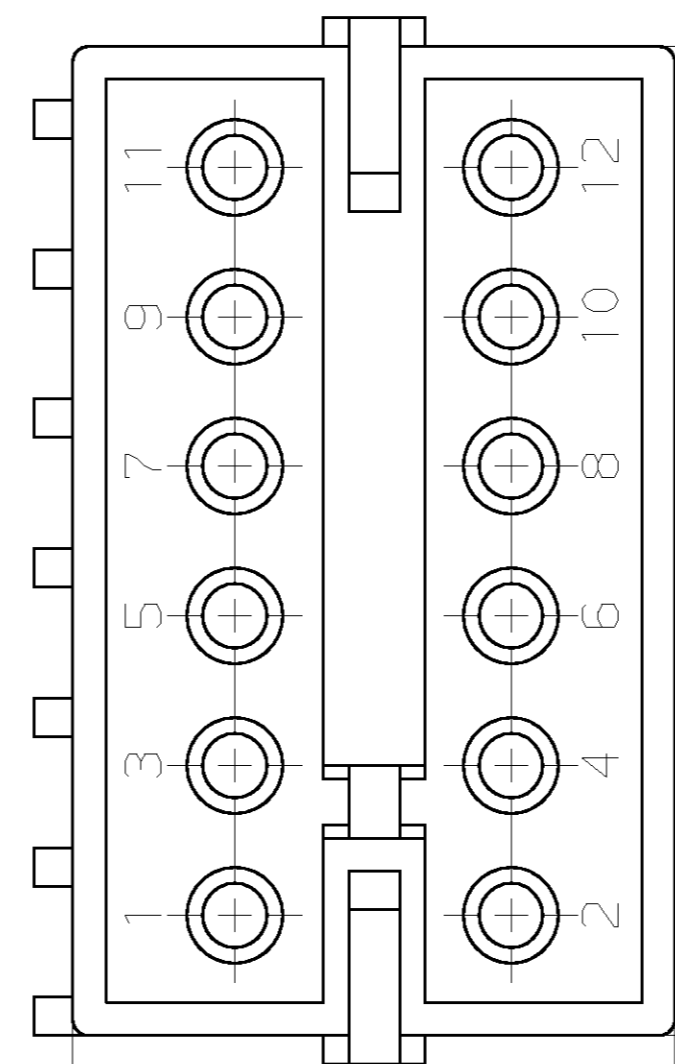
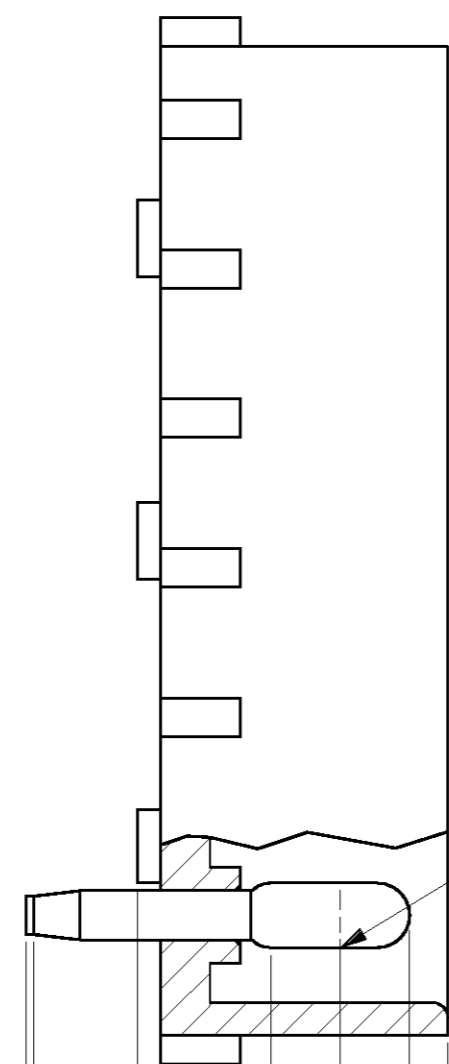
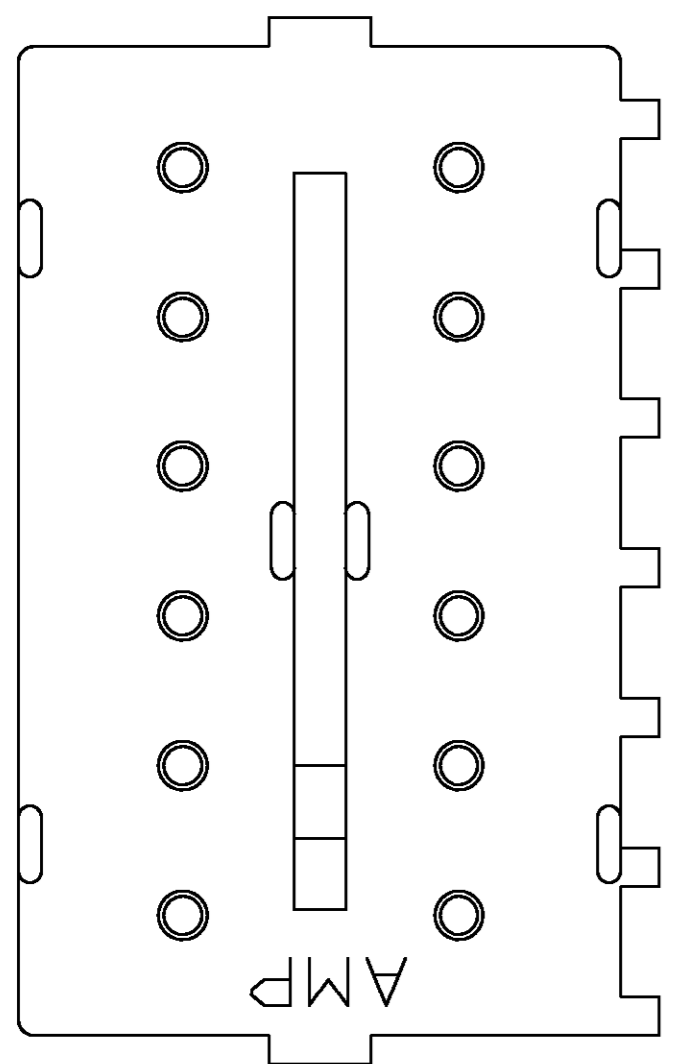
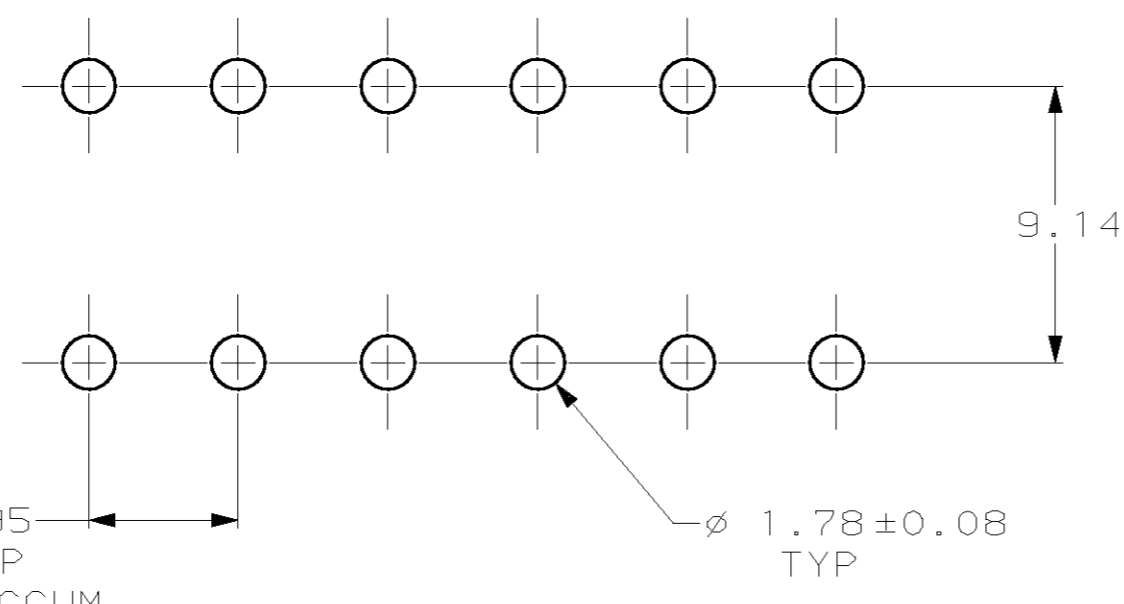
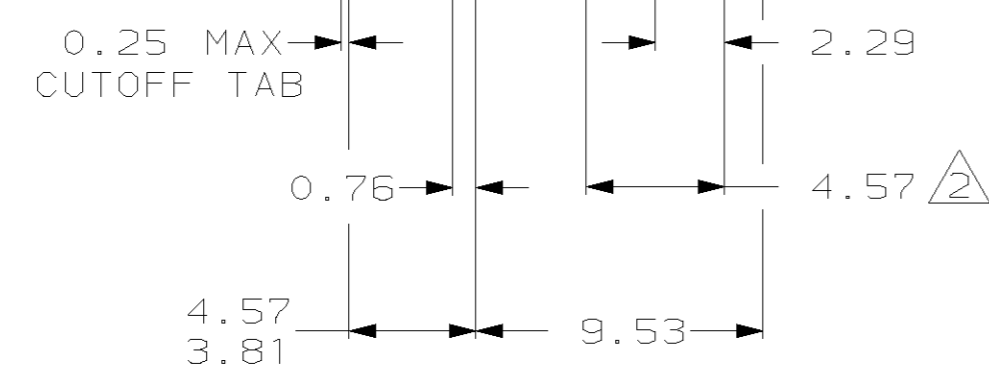


THIS DRAWING IS UNPUBLISHED. RELEASED FOR PUBLICATION .19  
 © COPYRIGHT 19 BY AMP INCORPORATED. ALL RIGHTS RESERVED.

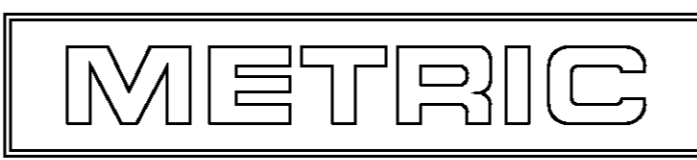
| LOC | DIST | REVISIONS   |                             |           |       |
|-----|------|-------------|-----------------------------|-----------|-------|
| P   | LTR  | DESCRIPTION | DATE                        | DWN       | APVD  |
| CM  | 53   | R           | REVISED PER EC 063B-0151-99 | 10-APR-00 | KW SR |



- PARTS COMPLY WITH AMP SOLDERABILITY SPEC 109-11-2.
- CONTACT IS PLATED OVERALL WITH 0.00127 NICKEL, THEN 0.00076 GOLD OVER LENGTH INDICATED AND MATTE TIN ON SOLDER TAIL END.



RECOMMENDED MOUNTING HOLE PATTERN FOR .062 THICK P.C. BOARD



|         |         |       |       |
|---------|---------|-------|-------|
| 2.29    | .090    | -     | -     |
| 1.78    | .070    | 32.77 | 1.290 |
| 0.76    | .030    | 19.94 | .785  |
| 0.25    | .010    | 9.53  | .375  |
| 0.13    | .005    | 9.14  | .360  |
| 0.08    | .003    | 4.95  | .195  |
| 0.00127 | .000050 | 4.57  | .180  |
| 0.00076 | .000030 | 3.81  | .150  |
| MM      | IN      | MM    | IN    |

CONVERSION TABLE

| MATERIAL | FINISH      | MATERIAL       | COLOR   | PART NO  |
|----------|-------------|----------------|---------|----------|
| CU ALLOY | $\triangle$ | NYLON, UL94V-0 | NATURAL | 350213-2 |
| CU ALLOY | PRE-TIN     | NYLON, UL94V-0 | NATURAL | 350213-1 |

| PIN                                    |  | HOUSING  |             | PART NO  |
|--|--|--|-------------|--|
| THIS DRAWING IS A CONTROLLED DOCUMENT. |  | DWN  | 10-APR-2000 | <b>AMP</b> AMP Incorporated<br>Harrisburg, PA 17105-3608 |
|  |  | CHK  | 10-APR-2000 |  |
|  |  | APVD   | 10-APR-2000 |  |
|  |  | NAME   | S. RIDGILL  |  |
| DIMENSIONS: mm                         |  | TOLERANCES UNLESS OTHERWISE SPECIFIED:                                   |             | PRODUCT SPEC   |
|  |  | 0 PLC ±-<br>1 PLC ±-<br>2 PLC ±0.13<br>3 PLC ±-<br>4 PLC ±-<br>ANGLES ±- |             | APPLICATION SPEC   |
| MATERIAL SEE TABLE                     |  | FINISH SEE TABLE   |             | WEIGHT -   |
|  |  | CUSTOMER DRAWING   |             | SCALE 4:1 SHEET 1 OF 1 REV R                             |

# Mouser Electronics

Authorized Distributor

Click to View Pricing, Inventory, Delivery & Lifecycle Information:

[TE Connectivity:](#)

[350213-1](#)