

| BASE NUMBER | A DIA | B DIA | C | D | E | F ±.005 | G | H MAX | J DIA | L | REL COM |
|-------------|----------------|--------------|--------------|--------------|--------------|---------|--------------|-------|--------------|-------------------------|------------------------|
| 10-101151-6 | .1640 .1571 | .270 .250 | .054 .045 | .156 .133 | .113 .102 | .031 | .071 .054 | .080 | .258 .243 | +0.00 -.031 375 | 31115-3 22380-375 |
| -14 | | | | | | | | | | +0.00 -.031 875 | 31115-3 22380-376 |
| -16 | | | | | | | | | | +0.00 -.062 1000 | 31115-3 22380-377 |
| -18 | | | | | | | | | | +0.00 -.062 1125 | 31115-3 22380-378 |
| -7 | | | | | | | | | | +0.00 -.031 438 | 31525-359 22446-345 |
| -8 | | | | | | | | | | +0.00 -.031 500 | 31525-438 22446-408 |
| -9 | | | | | | | | | | +0.00 -.031 562 | 32525-67 22531-9 |
| -12 | | | | | | | | | | +0.00 -.031 750 | 38524- 1325 |
| -24 | | | | | | | | | | +0.00 -.031 1500 | |
| -19 | | | | | | | | | | 1.188 +.000 -.062 | |
| -22 | | | | | | | | | | 1.375 +.000 -.062 | |
| -20 | | | | | | | | | | +0.00 -.062 1250 | |



- LOCKWASHER SHALL BE MADE FROM PHOSPHOR BRONZE PER ASTM B103, C51000, H08 OR ASTM B159, C51000, H08 OR TIN BRASS PER ASTM B591, C42500, H10; OR BILION BRONZE PER ASTM B99, C65100; H04 HARDNESS ROCKWELL B90 MINIMUM AND SHALL HAVE SAME FINISH AS SCREW.
- SCREW SHALL BE MADE OF BRASS AND MEET THE REQUIREMENTS OF FEDERAL SPEC QQ-W-321, COMP. 260, 270 OR 274 WITH EIGHTH OR QUARTER HARD TEMPER.
- TO COMPLETE BASE NO., ADD APPLICABLE LAST DIGIT SUFFIX NO. FOR DESIRED FINISH:

NICKEL PLATE 9-885 SUFFIX-8
 CADMIUM PLATE CHROMATE 9-3026 SUFFIX-1
 BLACK OXIDE 9-4260 SUFFIX-2
 CADMIUM PLATE OLIVE DRAB 9-2929 SUFFIX-3
 CADMIUM PLATE NICKEL BASE 9-4431 SUFFIX-XX7
 CHROME PLATE PER AMS 2406
 (.00002-.00005 THK) OVER
 NICKEL PLATE 9-885 (.0001-.0003 THK) SUFFIX-XXE
 OLIVE-GREEN ZINC ALLOY PLATE 9-2281 SUFFIX-XXU
 CADMIUM PLATE, BLACK FINISH 9-2827 SUFFIX-XXV
 BLACK ZINC ALLOY PLATE 9-2530 SUFFIX-XXY
 BLACK ZINC ALLOY CONDUCTIVE PLATE 9-2530-1 SUFFIX-XXX

PURCHASED

CAN BE MADE FROM 10-101151B

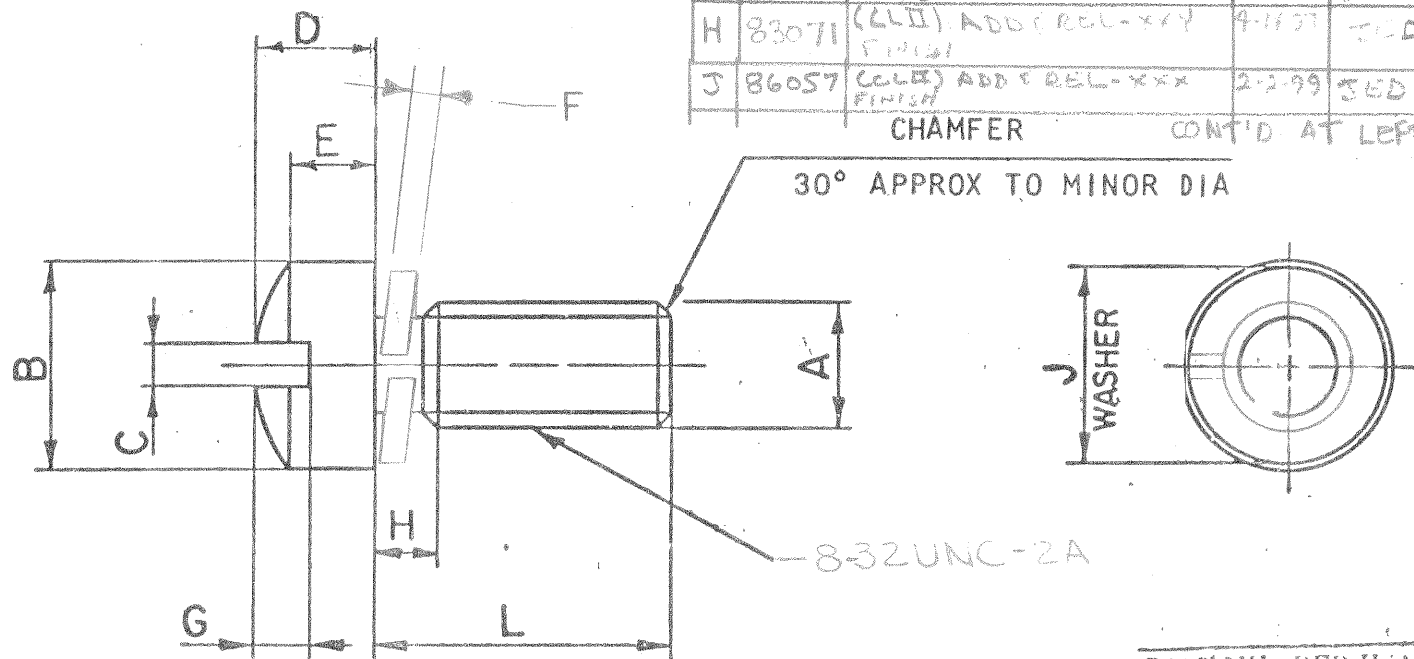
| | |
|--------------------------------------|----------------------------|
| MATERIAL SPEC. SEE NOTES 2 & 3 | PROCESS SPEC. |
| HEAT TREAT. SPEC. | FINISH SPEC. SEE NOTE 1 |
| TOOL ACC. | COM. REQ. 22380 |

| | | | | | | |
|---|---------|---------|--------|-----------|----------|-------------|
| SCINTILLA MAGNETO DIVISION BENDIX AVIATION CORPORATION SIDNEY, N. Y., U. S. A. | | | | | | |
| NAME SCREW, ASSEMBLED WASHER, 8-32 X L | | | | | | |
| D'MAN | CHECKER | MAT. | STDS | CH. D'MAN | APPROVER | SCALE |
| MILLER | Powell | CP | Bibaun | Ed | Winters | NO SCALE |
| 4-25-55 | 6-16-55 | 5-16-55 | | 6-17-55 | 6-17 | |

| | | |
|--|---------------------------------|-------------|
| TOLERANCES UNLESS OTHERWISE SPECIFIED | | |
| FRACTIONS ± 1/32 | DECIMALS ± 0.10 | ANGLES ± 2° |
| CONCENTRICITY 0.15 FIR. | BREAK SHARP EDGES 0.10-0.09 | |
| SQUARED SURFACES MUST BE PERPENDICULAR AND PARALLEL WITHIN THE TOLERANCE OF THE APPLICABLE DIMENSION AND SMOOTH WITHIN 200 MICR. FINCHES RMS | | |
| NEXT ASSEMBLY | 10-35901, 10-37103; 10-37271 | WEIGHT-LBS. |
| SUPERSEDED AND IS NOT INTERCHANGEABLE | | |
| SUPERSEDED BY | | 10-101151 |
| REF. 10-91441 10-35936 | | |

10-101151

| REV | DESCRIPTION | DATE | APPD. | REL 31115-3 | WAS | DATE | D'MAN | APPD. |
|-----|--------------------------------|--------|--------|-------------|--|---------|----------|----------|
| K | (CLII) ADDED -20 ECN: 86237 | 3-2-99 | PHILIP | | FOR CHGS 1 THRU A3 SEE RECORD DWG | | | |
| A | 53711 -2 | | | | 8-32 UNC-2A; REV NOTE 6-1-72 | 6-1-72 | Phillips | Hayes |
| B | 70192 -2 | | | | (CL II) WAS: .018 (F ± .005 COL), .288/ .278 (J DIA COL); REV NOTE 3; CHGD PICT. | 7/9/79 | Lodovico | Island |
| C | 25154 | | | | (CLII) SEE CHG. NOTICE | 6/4/79 | WASBURN | Phillips |
| D | 25600 | | | | (CLII) REV NOTE 3 | 7-30-79 | PHILIP | PHILIP |
| E | 27371 | | | | (CLII) REV'D NOTE 3 | 6/10/93 | RSD | PHILIP |
| F | 81127 | | | | (CLII) ADD REL-XXU FINISH | 12-2-79 | PHILIP | PHILIP |
| G | 81355 | | | | (CLII) ADD REL-XXV FINISH | 2-2-96 | JM | JM |
| H | 83071 | | | | (CLII) ADD REL-XXY FINISH | 4-11-97 | PHILIP | PHILIP |
| J | 86057 | | | | (CLII) ADD REL-XXX FINISH | 2-2-99 | PHILIP | PHILIP |



PART NUMBER USAGE RESTRICTED TO ELECTRICAL CONNECTOR DESIGN GROUP

USE OF THIS DOCUMENT IS UNLIMITED. DOCUMENTS REFERENCED HEREON CONTAIN LIMITED RIGHTS DATA.

Mouser Electronics

Authorized Distributor

Click to View Pricing, Inventory, Delivery & Lifecycle Information:

[Amphenol:](#)

[10-101151-143](#) [10-101151-183](#) [10-101151-083](#) [10-101151-093](#) [10-101151-14X](#)