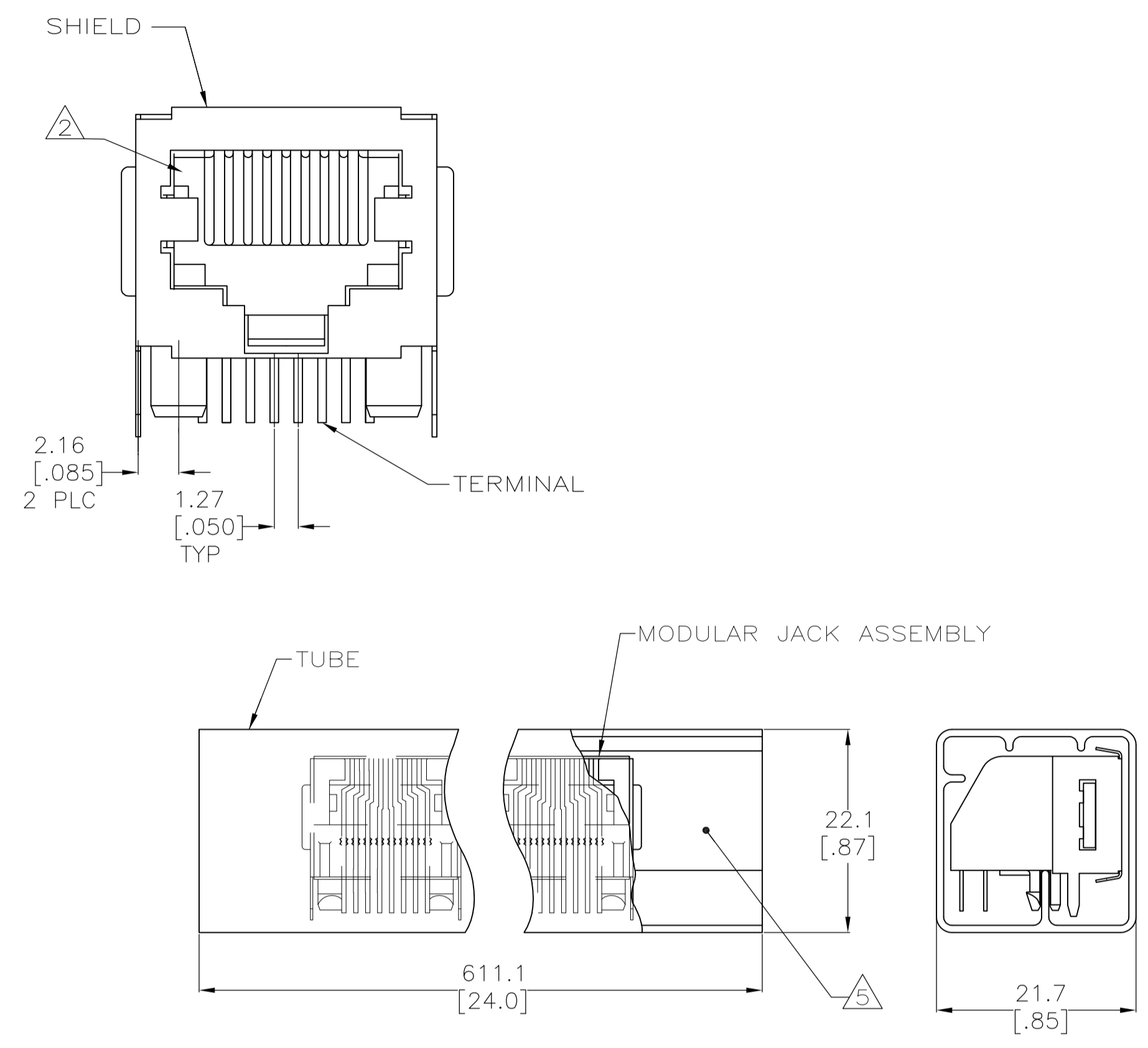
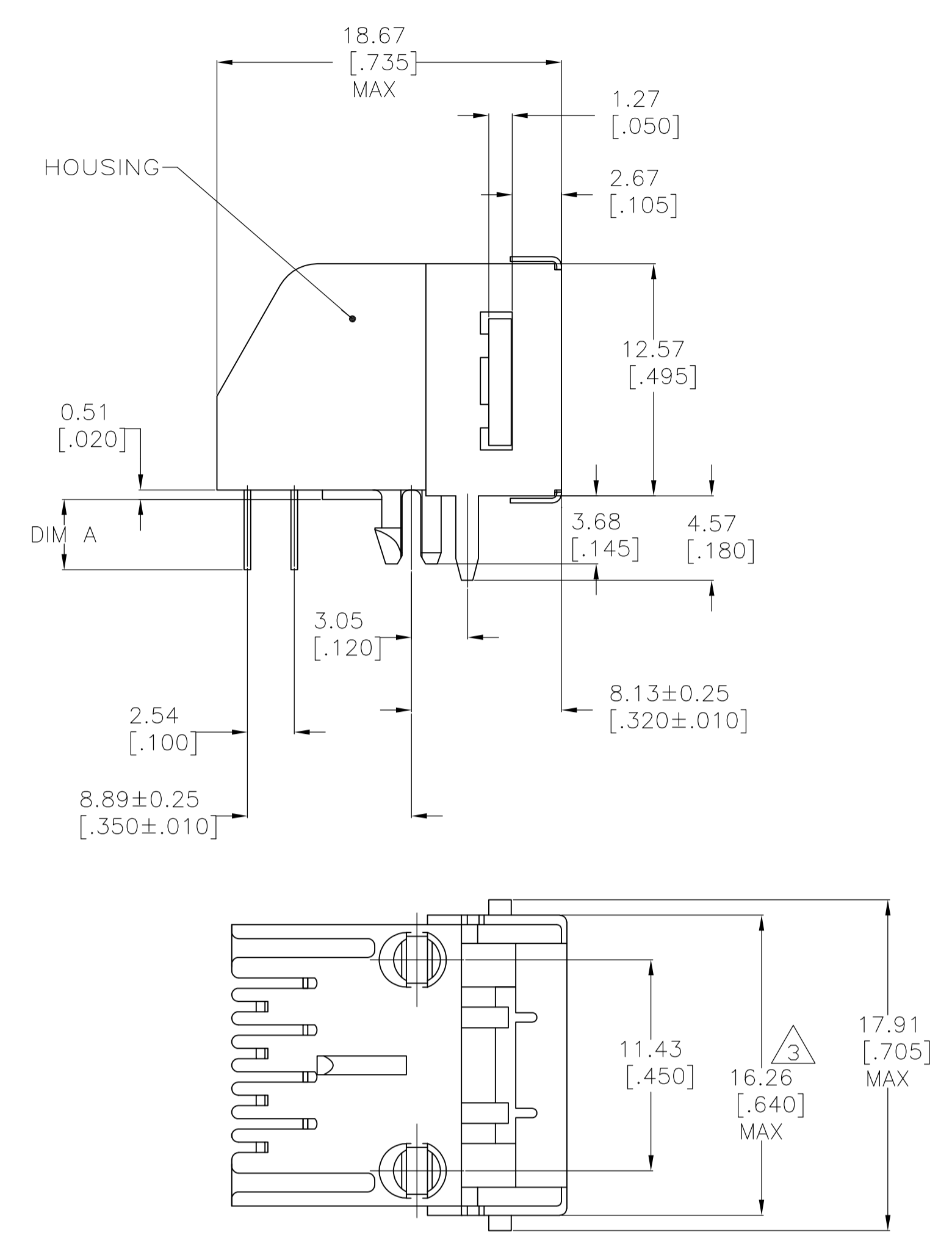
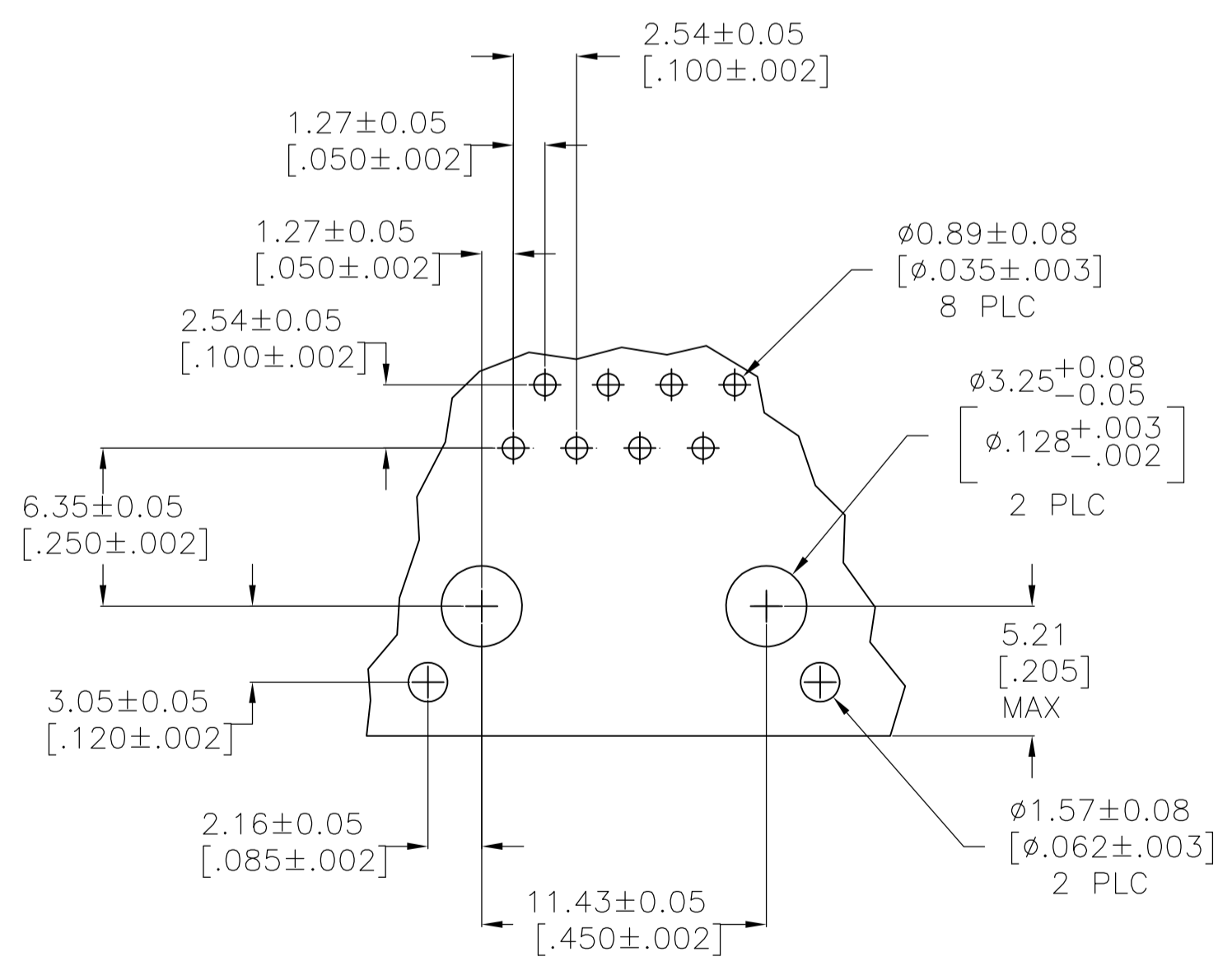


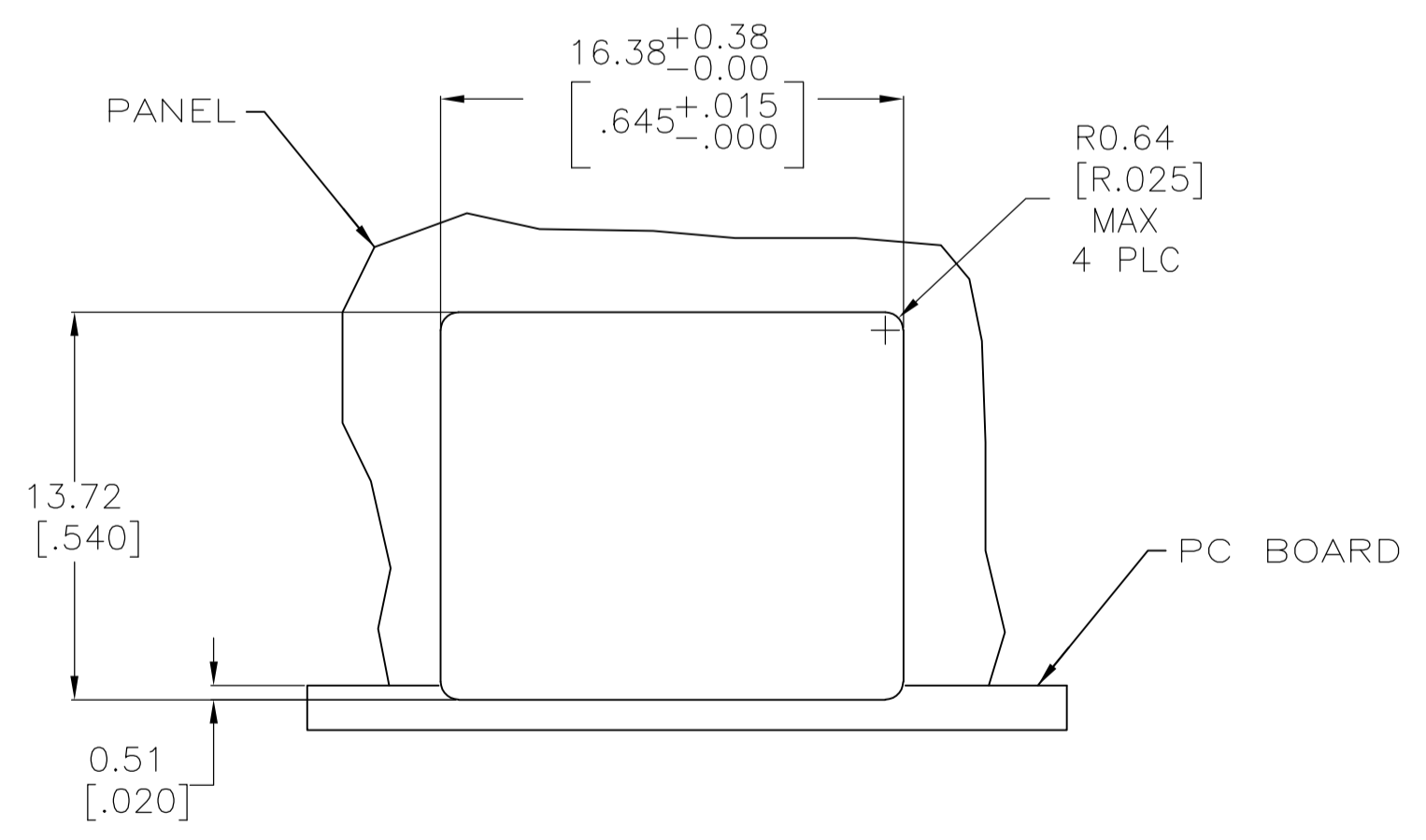
REVISIONS					
P	LTR	DESCRIPTION	DATE	DMN	APVD
D2		REVISE PER ECO-16-008229	31MAY2016	AD	SH



DETAIL B
SCALE 2:1



RECOMMENDED PRINTED CIRCUIT BOARD LAYOUT
(COMPONENT SIDE)



RECOMMENDED PANEL CUTOUT

- MATERIAL:
HOUSING - PBT POLYESTER, COLOR: BLACK
TERMINAL - 0.36[.014] THICK PHOS BRONZE PLATED WITH 1.27μm [.000050] THICK HARD GOLD IN LOCALIZED GOLD PLATE AREA AND 2.03μm [.000080] THICK MATTE TIN IN SOLDER AREA OVER 1.27μm [.000050] THICK NICKEL UNDERPLATE
SHIELD - 0.25 [.010] THICK COPPER ALLOY PLATED WITH 3.0μm [.000120] MINIMUM THICK REFLOWED TIN
- CAVITY CONFORMS TO FCC RULES AND REGULATIONS PART 68, SUBPART F.
- DIMENSIONS MEASURED ALONG FRONT EDGES OF MATING FACE
- BULK PACKAGED IN A TRAY
- 32 ASSEMBLIES PACKAGED PER TUBE. SEE DETAIL B
- MATERIAL OF HOUSING: HIGH TEMPERATURE THERMOPLASTIC. COLOR: BLACK

3.30-4.32 [.15±.02]	4	1-5555153-1
1.78-2.79 [.09±.02]	4	5555153-6
2.54-3.05 [.11±.01]	4	5555153-5
3.30-4.32 [.15±.02]	5	5555153-3
3.30-4.32 [.15±.02]	4	5555153-1
DIM A	PACKAGED	PART NUMBER

DIMENSIONS:		TOLERANCES UNLESS OTHERWISE SPECIFIED:		APPROVED:		NAME:	
mm	[INCHES]	0 PLC	± -	G. GARRETT/L.A. MAYER	05NOV2007	P. RECCE	05NOV2007
		1 PLC	± -	S. FLICKINGER	05NOV2007		
		2 PLC	± 0.13[.005]				
		3 PLC	± -				
		4 PLC	± -				
		ANGLES	± -				
MATERIAL	SEE NOTE 1	FINISH	SEE NOTE 1	WEIGHT	0.000000	SIZE	A1
				CUSTOMER DRAWING		SCALE	4:1
						SHEET	1 OF 1
						REV	D2

Mouser Electronics

Authorized Distributor

Click to View Pricing, Inventory, Delivery & Lifecycle Information:

[TE Connectivity:](#)

[5555153-5](#)