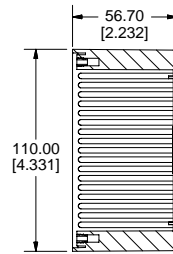
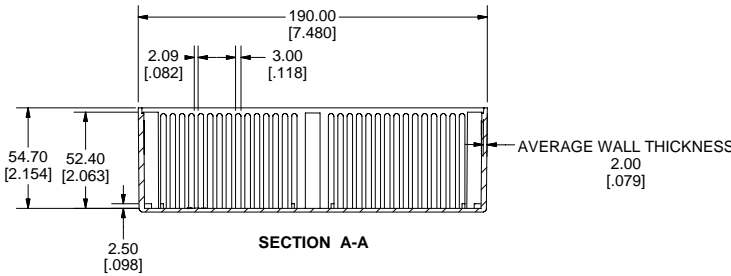
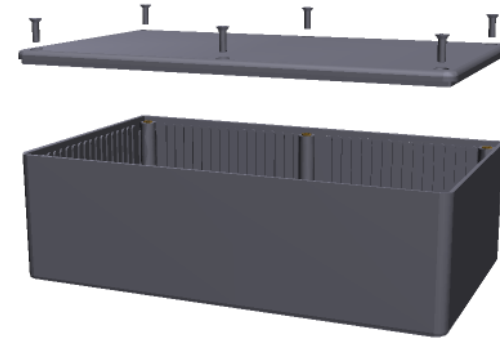


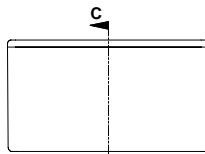
TOP VIEW OF BOX



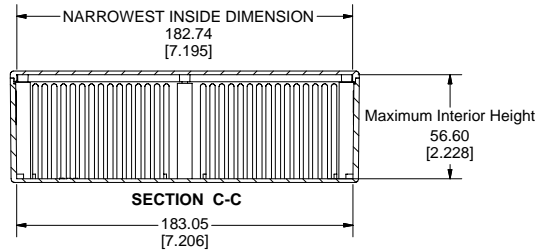
SECTION B-B



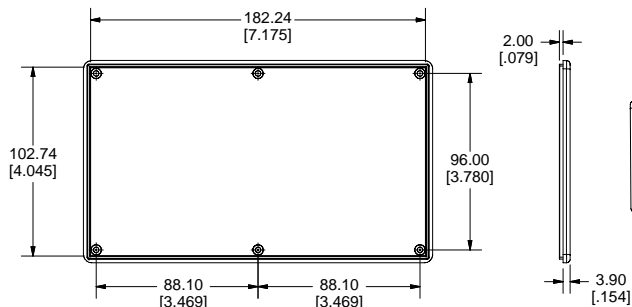
SECTION A-A



END VIEW OF ASSEMBLY

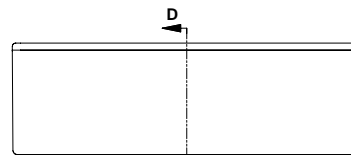


SECTION C-C

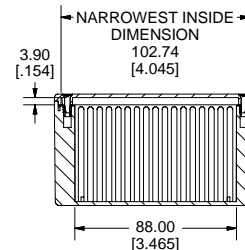


BOTTOM OF LID

SIDE OF LID



SIDE VIEW OF ASSEMBLY



SECTION D-D

Note:  
Enclosures can be Factory Modified ( Milling, Drilling, Printing etc. )  
Contact Factory [mjm@hammondmfg.com](mailto:mjm@hammondmfg.com) for quotes  
Solid models of this enclosure available in STEP or IGES Format.

| PART NUMBERS                                     |   |                         |
|--|---|-------------------------|
| 1591E Enclosures                                 |   |                         |
| Material   | Colour  | Part Number             |
| FR ABS<br>UL94 - V0                              | Beige   | 1591EBG                 |
|  | Black   | 1591EBK                 |
|  | Blue  | 1591EBU                 |
|  | Grey  | 1591EGY                 |
| GP ABS<br>UL94 - HB                              | Black   | 1591ESBK                |
|  | Grey  | 1591ESGY                |
| Translucent<br>Polycarbonate                     | Ice Blue  | 1591ETBU                |
|  | IR Red  | 1591ETRD                |
|  | Crystal Clear   | 1591ETCL                |
| Accessories                                      |   |                         |
| Description                                      | Part Number   |                         |
| Universal Use                                    | PC Board Card Adapters  | See Accessories Section |
|  | Clear Lids - clear, flame retardant polycarbonate - Lid ONLY    | 1591EC                  |
| FR ABS   | Replacement Screws, Flat Head Phillips Nickel Plated Pkg of 100 | 1591MS100               |
|  |   | 1591MS100BK (Black)     |
| GP ABS   | Self Tapping Pkg of 100   | 1591TS100               |
|  |   | 1591TS100BK (Black)     |
| Recommended Torque on Fasteners (no lubrication) |   |                         |
|  | M3 - 0.5 x 10mm Screws  | 30-40 cN*m              |
|  | #4 x 0.5 Screws   | 30-40 cN*m              |

