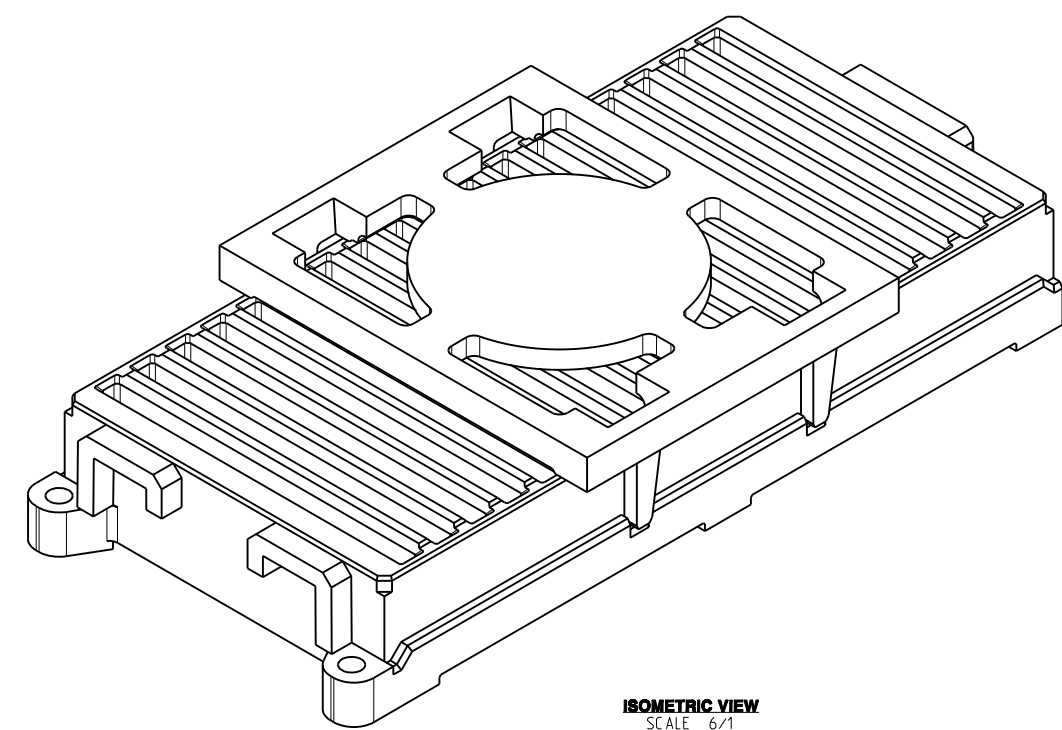
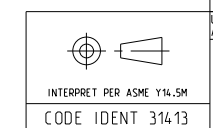


TABLE 1	
PART NUMBER ①	DESCRIPTION
380-5182-X00	RECEPTACLE ASSY. 6 PAIR, 7 MM HIGH (REDUCED WIPE), 18 WAFERS, 100 OHMS NO LOSSY
380-5282-X00	RECEPTACLE ASSY. 6 PAIR, 7 MM HIGH (REDUCED WIPE), 18 WAFERS, 85 OHMS NO LOSSY

ZONE	REV	SCR NUMBER	DESCRIPTION	BY	DATE	APPROVED
ALL	A	DMAN-8W TG19.VER01	NEW RELEASE	D.MALOON	08/03/12	D.McNAMARA
SHT 1	B	MCHH-9RUREZ.VER01	ADDED NOTE 11. ADDED "HOLES NOT NECESSARY" TO NOTE 4. ADDED MOUNTING HOLE TO PCB	HCL-AK	03/13/15	D.McNAMARA
SHT1-2	C	MCHH-A9UKQH.VER01	CORRECTED VACUUM CAP TO PLASTIC. WAS FULL LENGTH METAL	M.CHARETH	05/11/16	D.McNAMARA



- NOTES:
- ① ASSEMBLY PART NUMBER VARIES WITH PLATING OPTION AS FOLLOWS:  
FOR NI SULFAMATE UNDERPLATE, 8TH DIGIT OF P/N IS 2.  
FOR NANO NI UNDERPLATE, 8TH DIGIT OF P/N IS 4.
  2. MAT'L:  
HOUSING/WAFERS/VACUUM CAP - LCP.  
CONTACTS - HIGH PERFORMANCE COPPER ALLOY. PER MTS-506.
  3. 0.71 DIA SOLDER SPHERES WILL NOT BE PERFECTLY SPHERICAL AFTER REFLOW ATTACHMENT.
  - ④ HOLES RECOMMENDED FOR VISUAL INSPECTION OF CONNECTOR ALIGNMENT AFTER PLACEMENT AND BEFORE REFLOW. HOLES NOT NECESSARY.
  - ⑤ SOLDER BALL PROTRUSION BELOW HOUSING.
  - ⑥ SEE TECHNICAL BULLETIN TB-2241 FOR DETAILED SMT PROCESSING AND PCB FOOT PRINT RECOMMENDATIONS.
  - ⑦ MAXIMUM CO-PLANARITY OF THE BALL FIELD.
  - ⑧ MAXIMUM RADIAL TRUE POSITION OF ANY SOLDER BALL IN RELATION TO AN IDEAL BEST FIT GRID.
  9. TOLERANCES DO NOT APPLY TO REFERENCE DIMENSIONS SHOWN IN "Ø" OR BASIC DIMENSIONS SHOWN IN "□".
  10. REFER TO FILE 380-5X82-XX0.STP FOR SIMPLIFIED 3D MODEL OF ASSEMBLY.
  - ⑪ TOOLING HOLES USED FOR INTERNAL PROCESS ALIGNMENT AND NOT REQUIRED FOR SMT PROCESS ALIGNMENT. QUANTITY OF TOOLING HOLES IS OPTIONAL. AT MANUFACTURERS DISCRETION.



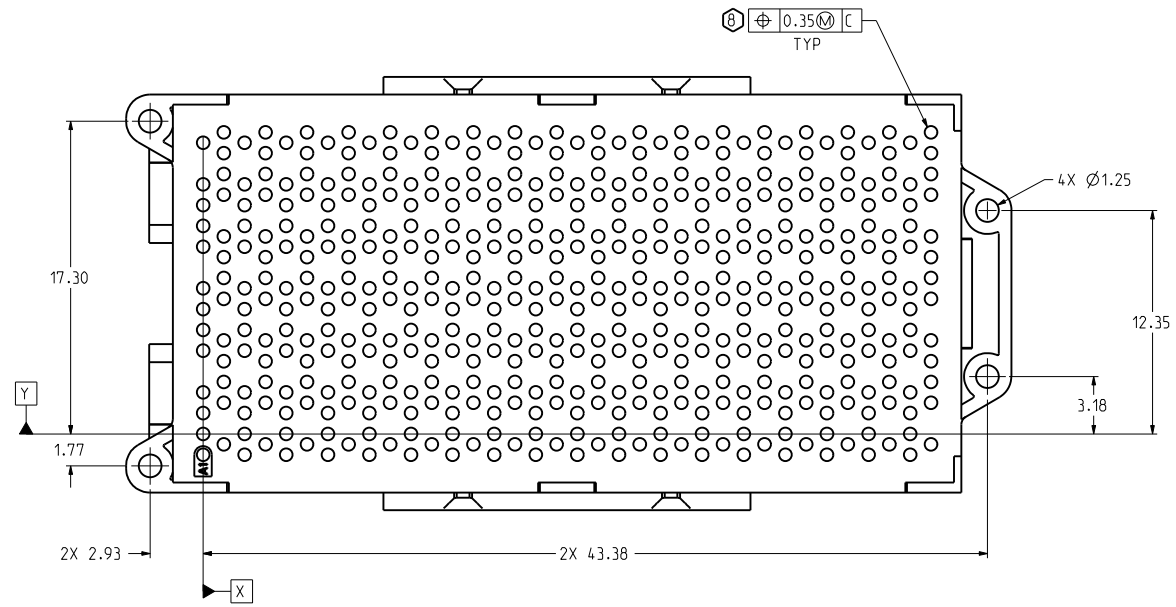
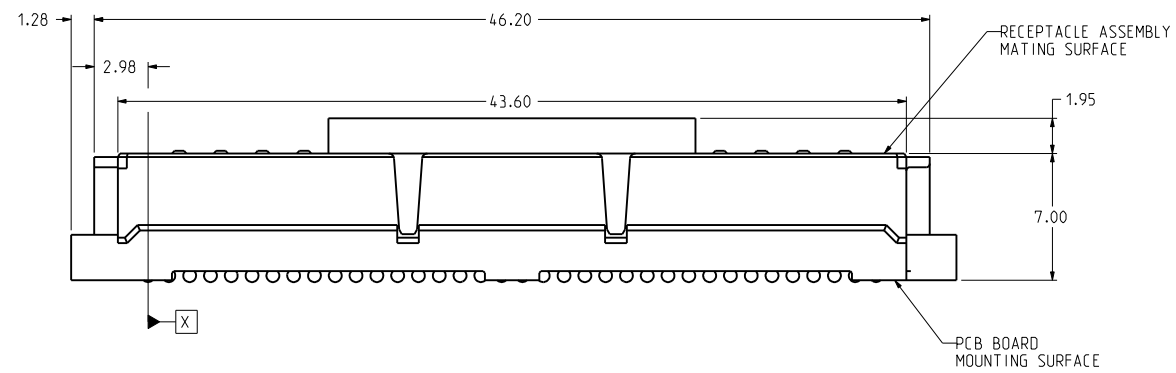
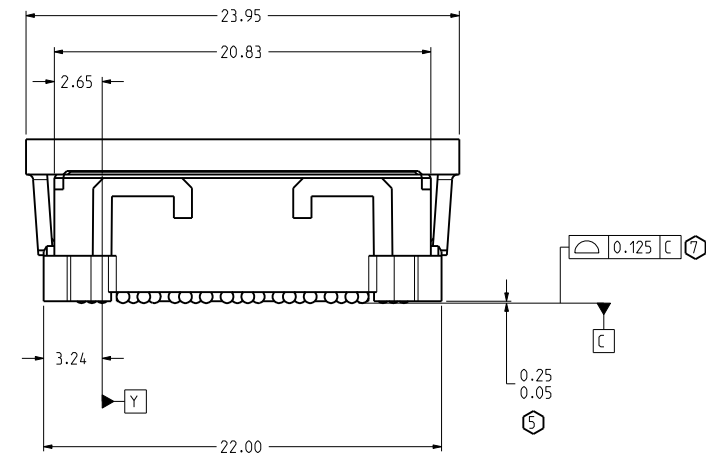
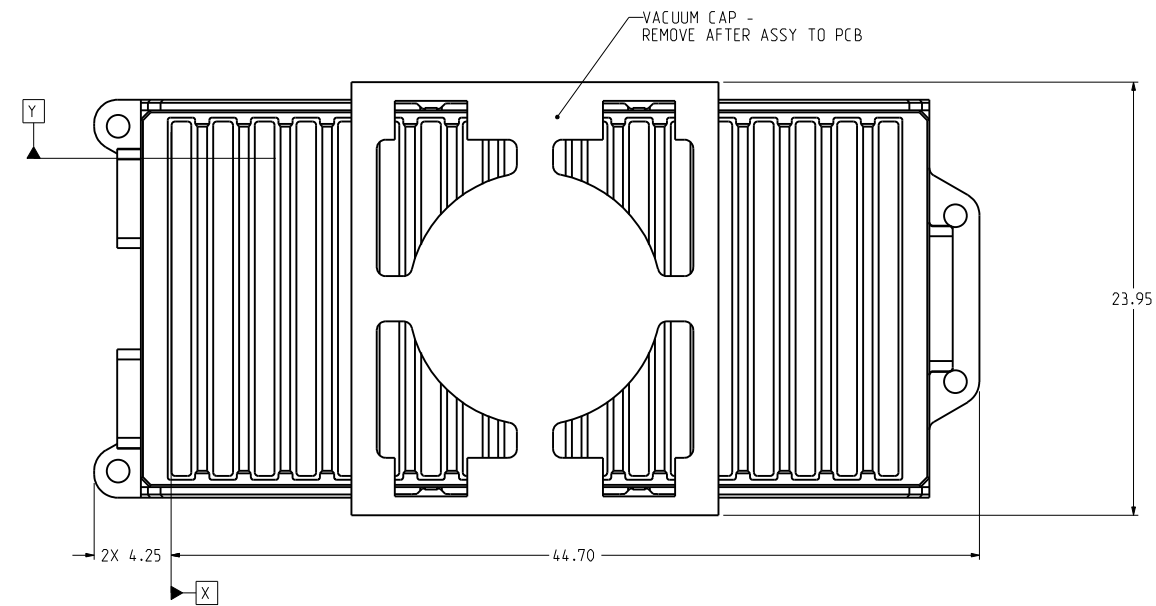
TOLERANCES		DESIGN 11/05/10 D.MALOON	<b>Amphenol TCS</b> A Division of Amphenol Corporation 200 Innovative Way, Nashua, NH 03082 603.879.3000
0.0	±0.25	DRAWN 01/20/12 D.MALOON	
0.00	±0.13	CHK 08/03/12 D.McNAMARA	TITLE
0.000	± -	APVD 08/03/12 D.McNAMARA	RECEPTACLE ASSEMBLY, 18 WAFERS InfotX 6 PAIR 7 MM HIGH REDUCED WIPE
ANGLES	± 3°		PART NO. SEE TABLE 1
UNLESS OTHERWISE SPECIFIED DIMENSIONS ARE IN MM. DECIMAL MARKER IS A PERIOD			REV N/A
<b>CUSTOMER USE DRAWING</b>			DRAWING NO. C-380-5182-500
			REV C
SIZE D		SCALE 5/1	SHEET 1 OF 4

DRW NO. C-380-5182-500 SH 1 REV C

8 7 6 5 4 3

DRW NO. C-380-5182-500 SH 2 REV C

ZONE	REV	SCR NUMBER	DESCRIPTION	BY	DATE	APPROVED
			SEE SHEET 1			



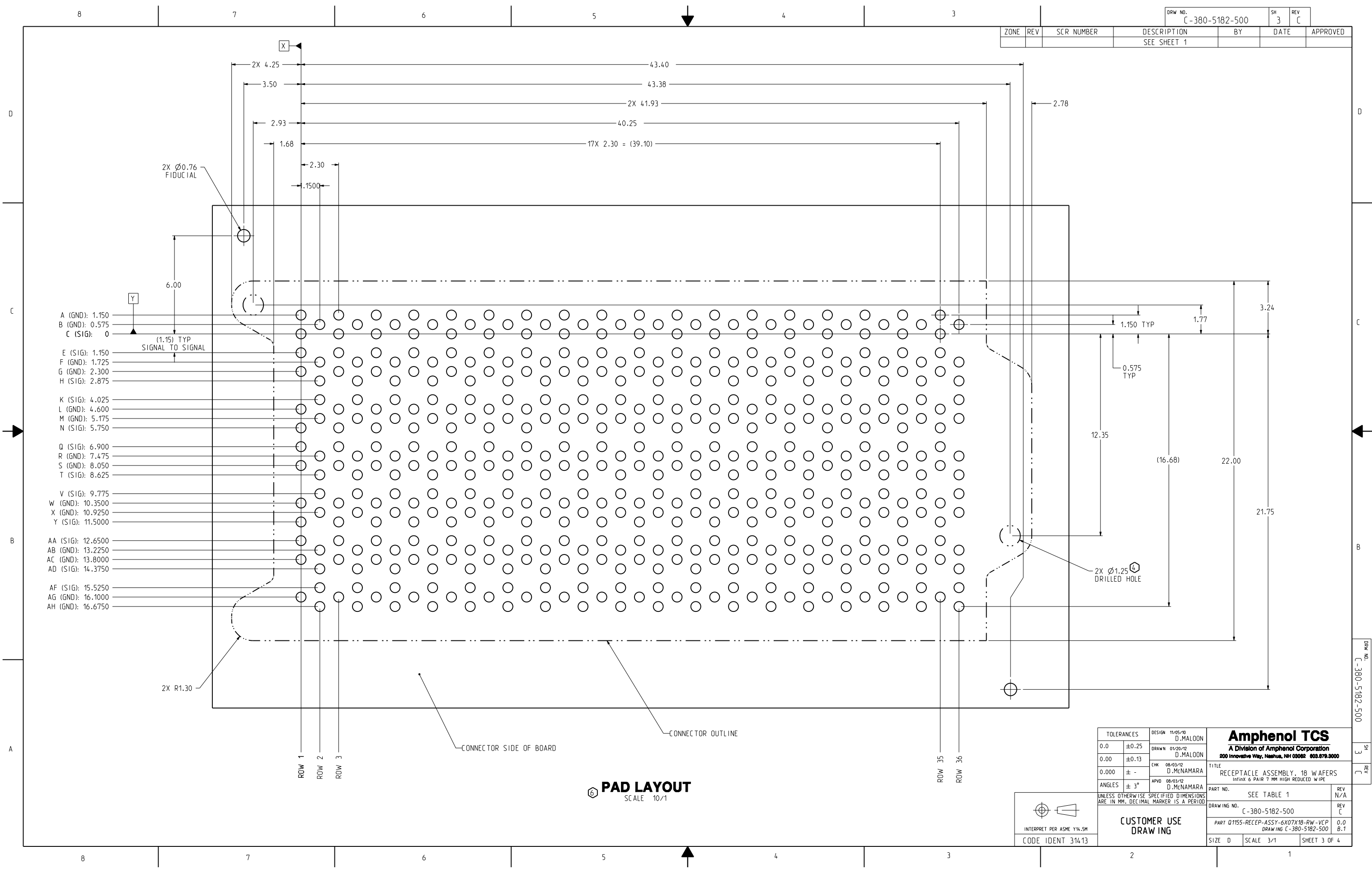
TOLERANCES		DESIGN 11/05/10 D.MALOON	<b>Amphenol TCS</b> A Division of Amphenol Corporation 200 Innovative Way, Nashua, NH 03082 603.870.3000		
0.0	±0.25	DRAWN 01/20/12 D.MALOON	TITLE RECEPTACLE ASSEMBLY, 18 WAFERS Infinox 6 PAIR 7 MM HIGH REDUCED WIFE		
0.00	±0.13	CHK 08/03/12 D.MENAMARA	PART NO. SEE TABLE 1		
0.000	± -	APVD 08/03/12 D.MENAMARA	DRAWING NO. C-380-5182-500		
ANGLES ± 3°		UNLESS OTHERWISE SPECIFIED DIMENSIONS ARE IN MM. DECIMAL MARKER IS A PERIOD			REV N/A
INTERPRET PER ASME Y14.5M			CUSTOMER USE DRAWING		
CODE IDENT 314.13			SIZE D	SCALE 2/1	SHEET 2 OF 4

DRW NO. C-380-5182-500 SH 2 REV C

8 7 6 5 4 3

2 1

ZONE	REV	SCR NUMBER	DESCRIPTION	BY	DATE	APPROVED
			SEE SHEET 1			



- A (GND): 1.150
- B (GND): 0.575
- C (SIG): 0
- E (SIG): 1.150
- F (GND): 1.725
- G (GND): 2.300
- H (SIG): 2.875
- K (SIG): 4.025
- L (GND): 4.600
- M (GND): 5.175
- N (SIG): 5.750
- Q (SIG): 6.900
- R (GND): 7.475
- S (GND): 8.050
- T (SIG): 8.625
- V (SIG): 9.775
- W (GND): 10.3500
- X (GND): 10.9250
- Y (SIG): 11.5000
- AA (SIG): 12.6500
- AB (GND): 13.2250
- AC (GND): 13.8000
- AD (SIG): 14.3750
- AF (SIG): 15.5250
- AG (GND): 16.1000
- AH (GND): 16.6750

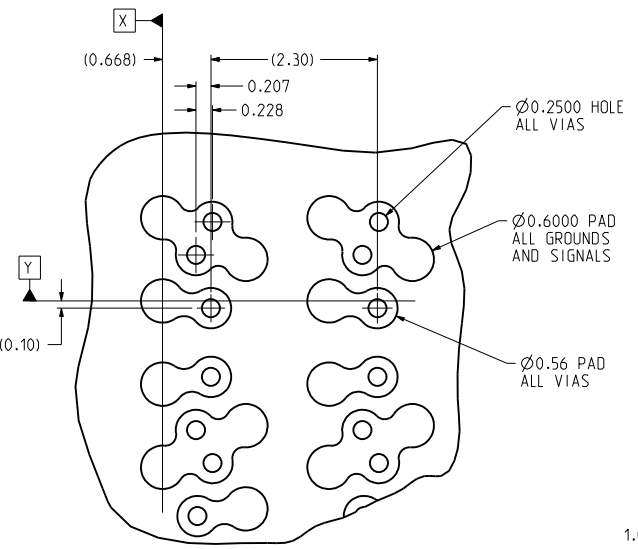
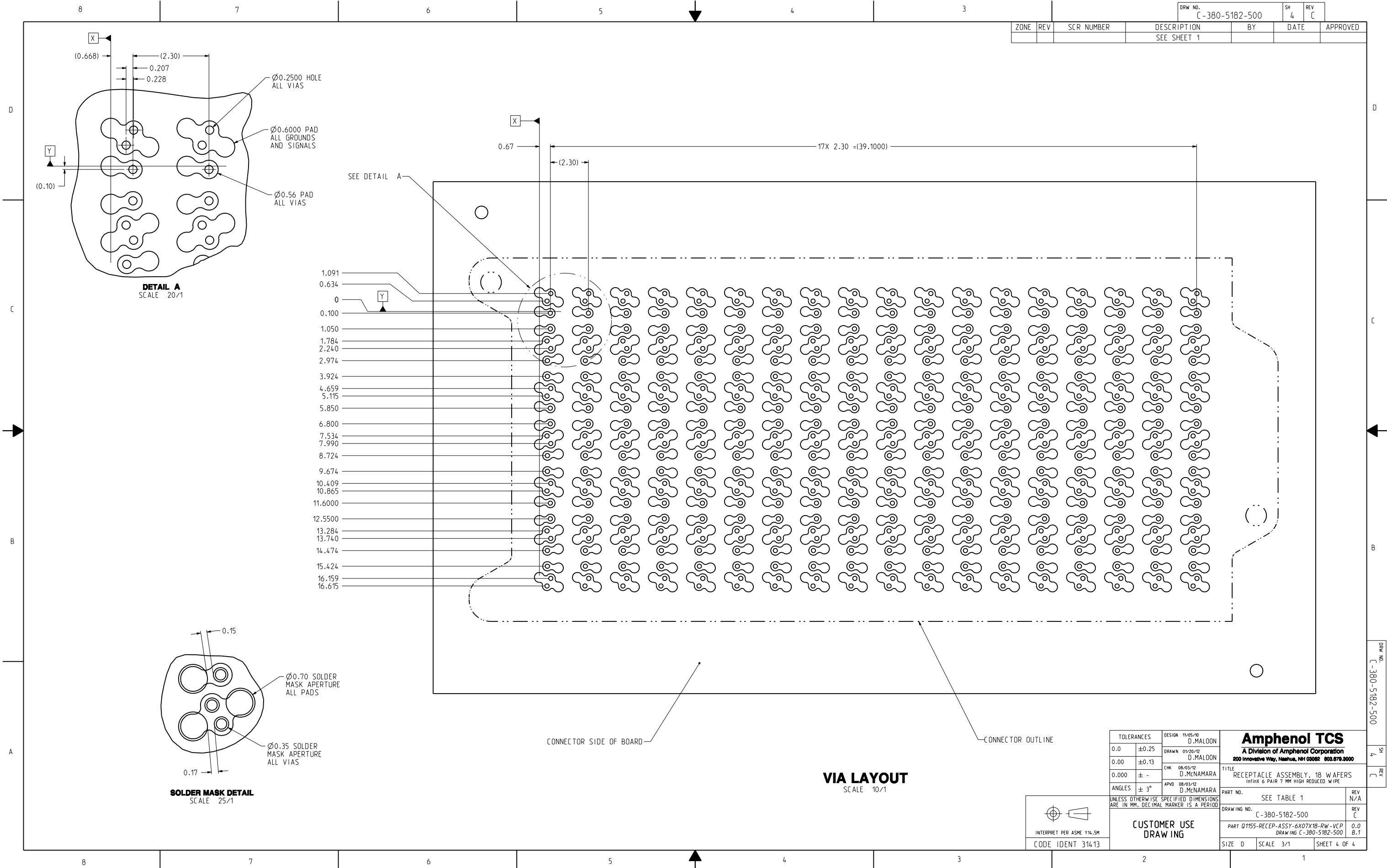
**6** PAD LAYOUT  
SCALE 10/1

INTERPRET PER ASME Y14.5M  
CODE IDENT 314.13

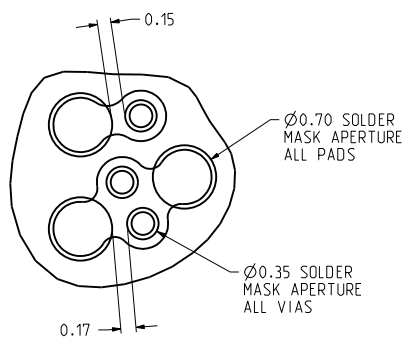
TOLERANCES		DESIGN 11/05/10 D.MALOON	<b>Amphenol TCS</b> A Division of Amphenol Corporation 200 Innovative Way, Nashua, NH 03082 603.870.3000
0.0	±0.25	DRAWN 01/20/12 D.MALOON	
0.00	±0.13	CHK 08/03/12 D.MENAMARA	
0.000	± -	APVD 08/03/12 D.MENAMARA	
ANGLES	± 3°		
UNLESS OTHERWISE SPECIFIED DIMENSIONS ARE IN MM. DECIMAL MARKER IS A PERIOD			TITLE RECEPTACLE ASSEMBLY, 18 WAFERS Infinix 6 PAIR 7 MM HIGH REDUCED WIFE
CUSTOMER USE DRAWING		PART NO. SEE TABLE 1	REV N/A
		DRAWING NO. C-380-5182-500	REV C
		PART Q155-RECEP-ASSY-6X07X18-RW-VCP DRAWING C-380-5182-500	0.0 B.1
SIZE D	SCALE 3/1	SHEET 3 OF 4	

DRAW NO. C-380-5182-500 SH 3 REV C

ZONE	REV	SCR NUMBER	DESCRIPTION	BY	DATE	APPROVED
			SEE SHEET 1			

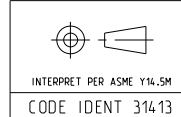


**DETAIL A**  
SCALE 20/1



**SOLDER MASK DETAIL**  
SCALE 25/1

**VIA LAYOUT**  
SCALE 10/1



TOLERANCES	DESIGN	11/05/10	D.MALOON	
0.0	±0.25	DRAWN	01/20/12	D.MALOON
0.00	±0.13	CHK	08/03/12	D.MENAMARA
0.000	± -	APVD	08/03/12	D.MENAMARA
ANGLES	± 3°	UNLESS OTHERWISE SPECIFIED DIMENSIONS ARE IN MM. DECIMAL MARKER IS A PERIOD		

<b>Amphenol TCS</b> A Division of Amphenol Corporation 200 Innovative Way, Nashua, NH 03082 603.879.3000		TITLE	RECEPTACLE ASSEMBLY, 18 WAFERS InfiniX 6 PAIR 7 MM HIGH REDUCED WIPE
		PART NO.	SEE TABLE 1
DRAWING NO.	C-380-5182-500	REV	C
PART	Q1155-RECEP-ASSY-6X07X18-RW-VCP	SCALE	3/1
DRAWING	C-380-5182-500	SHEET	4 OF 4

CUSTOMER USE  
DRAWING

DRW NO. C-380-5182-500  
SH 4  
REV C

# Mouser Electronics

Authorized Distributor

Click to View Pricing, Inventory, Delivery & Lifecycle Information:

[Amphenol:](#)

[380-5182-200](#)