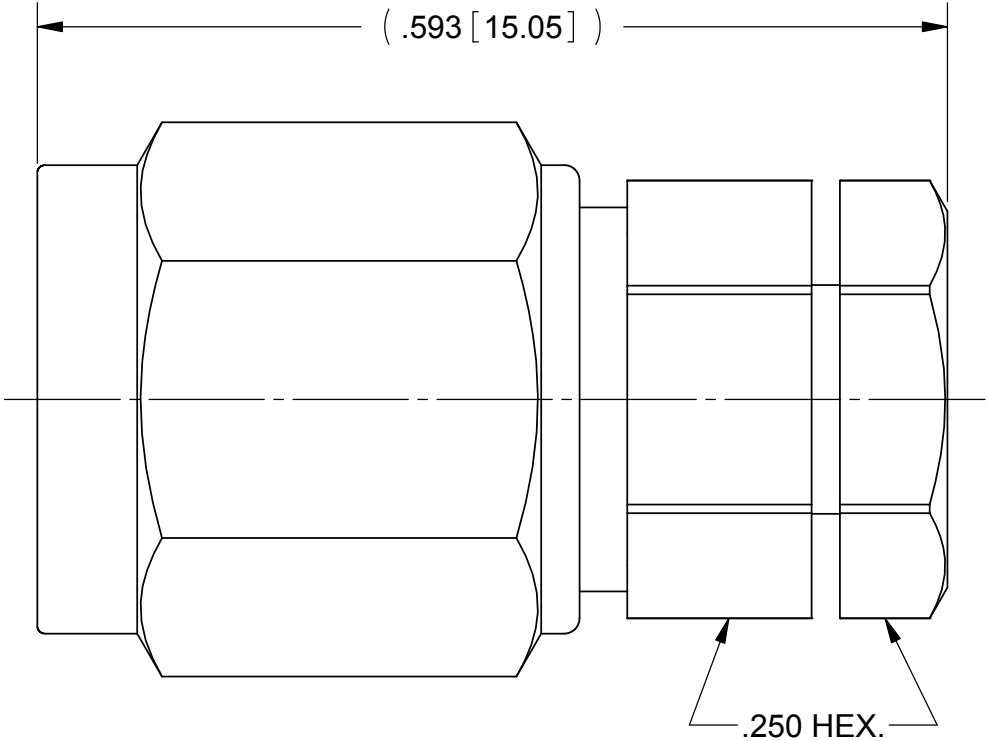
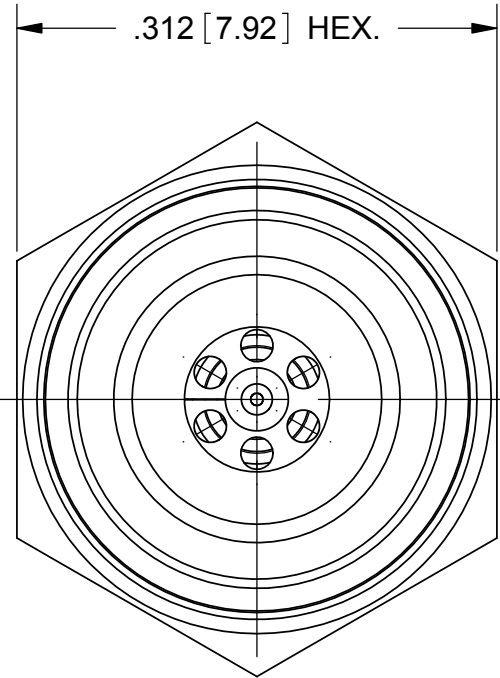
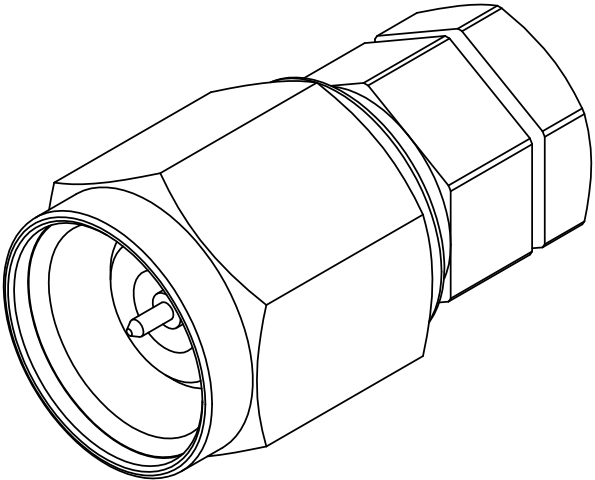


PRODUCT DATA DRAWING

REVISION HISTORY			
REV	DESCRIPTION	DATE	APPROVED
-	REL. NRN 35533	08/24/09	STW
A	DCN 39255	07/12	STW
B	DCN 41510	07/15	STW



MATERIAL:



BODY, FERRULE CLAMP NUT & COUPLING NUT:	STAINLESS STEEL
LOCK RING & CONTACT:	BERYLLIUM COPPER
BEAD:	ULTEM 1000
GASKET:	SILICONE RUBBER

FINISH:

BODY, CLAMP NUT & COUPLING NUT:	PASSIVATED
FERRULE & CONTACT:	GOLD OVER NICKEL

PERFORMANCE:

IMPEDANCE:	50 OHMS
FREQ. RANGE:	DC TO 50.0 GHz.
VSWR:	1.35:1 DC TO 50.0 GHz.
INSERTION LOSS:	.05 X SQRT (F (F IN GHz.))

MATERIAL:	SEE NOTES	DIMENSIONS ARE IN INCHES TOLERANCES: FRACTIONAL: ±1/64 ANGULAR: X° ±1°0' X°X' ±15' DECIMAL: .X ±.030 .XX ±.010 .XXX ±.005 INTERPRET DIMENSIONS AND TOLERANCES PER ASME Y14.5M - 1994	UNLESS OTHERWISE SPECIFIED 1) ALL DIMENSIONS ARE IN INCHES (MILLIMETERS) 2) ALL DIMENSIONS ARE AFTER PLATING. 3) BREAK CORNERS & EDGES .005 R. MAX. 4) CHAM. 1ST & LAST THREADS. 5) SURFACE ROUGHNESS 63-MIL-STD-10. 6) DIA.'S ON COMMON CENTERS TO BE CONCENTRIC WITHIN .005 T.I.R. 7) REMOVE ALL BURRS	 2400 Centrepark West Drive, Suite 100 West Palm Beach, FL 33409		
FINISH:	SEE NOTES			TITLE: 2.4mm STRAIGHT PLUG FOR Ø.047 CABLE		
SURFACE AREA:	N/A					
PROPRIETARY THE INFORMATION CONTAINED IN THIS DRAWING IS THE SOLE PROPERTY OF SV MICROWAVE, INC. ANY REPRODUCTION IN PART OR AS A WHOLE WITHOUT THE WRITTEN PERMISSION OF SV MICROWAVE, INC IS PROHIBITED.		THIRD ANGLE PROJECTION 	DRAWN:	JMC 08/24/09		
			CHECKED:	STW 08/24/09		
			APPROVED:	STW 08/24/09		
			SIZE	CAGE CODE	DWG. NO.	
			B	95077	SF1611-60001	
			SCALE: 8:1		SHEET 1 OF 1	

Mouser Electronics

Authorized Distributor

Click to View Pricing, Inventory, Delivery & Lifecycle Information:

[Amphenol:](#)

[SF1611-60001](#)