

4

3

2

1

THIS DRAWING IS UNPUBLISHED.

RELEASED FOR PUBLICATION

© COPYRIGHT

ALL RIGHTS RESERVED.

LOC

DIST


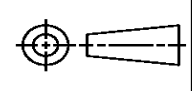
REVISIONS

P	LTR	DESCRIPTION	DATE	DWN	APVD
	B1	ECR-14-003325	11MAR2014	GK	HMR

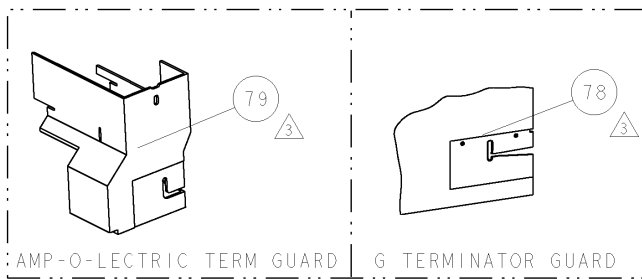
REPLACED BY OCEAN STYLE APPLICATOR PART
NUMBER 2151220-1

FOR REPLACEMENT PARTS FOR APPLICATOR 1385891
REFER TO ADDITIONAL PAGE(S). SPARE PARTS KIT (IF LISTED)
WILL REMAIN AVAILABLE.

THE REPLACEMENT OCEAN STYLE APPLICATOR HAS THE
SAME TERMINATOR/PRESS INTERFACE AS APPLICATOR
1385891

THIS DRAWING IS A CONTROLLED DOCUMENT.		DWN GOPALAKRISHNA HV		 TE Connectivity	
CHK RAGHAVENDRA		APVD RAGHAVENDRA			
DIMENSIONS:		TOLERANCES UNLESS OTHERWISE SPECIFIED:		NAME SIDE FEED HDM APPLICATOR	
		0 PLC ±		SIZE A3	
		1 PLC ±		CAGE CODE	
		2 PLC ±		DRAWING NO	
		3 PLC ±		RESTRICTED TO	
4 PLC ±		4 PLC ±		C- 1385891	
MATERIAL		FINISH		WEIGHT	
				CUSTOMER DRAWING	
				SCALE	
				SHEET 1 OF 2	
				REV B1	

8				7			
THIS DRAWING IS UNPUBLISHED.				RELEASED FOR PUBLICATION			
20							
(C) COPYRIGHT 20 BY TYCO ELECTRONICS CORPORATION. ALL RIGHTS RESERVED.							
PART NUMBER	REV	FIRST USED	POWER UNIT		FEED TYPE		
1385891-1	A	122500-1	LEADMAKER		POST FEED		
1385891-2	B	565435-5	BENCH MODEL K		PRE FEED		
1385891-3	A	354500-1	BENCH MODEL G		PRE FEED		



TERMINAL NAME: JUNIOR POWER TIMER CONTACT						
TERMINAL PN	-	AMP TERMINAL - AMP CRIMP SPECS				
927775						
-	-	REF SETTING	CRIMP HEIGHT		WIRE SIZE	
-	-	B-9	1.36±0.05mm[.054±.002 IN]		1.00mm2	
-	-	C-5	1.27±0.05mm[.050±.002 IN]		0.75mm2	
-	-	D-2	1.18±0.05mm[.046±.002 IN]		0.50mm2	
-	-	-	-		-	
-	-	CRIMP		SIZE	TYPE	RANGE
SEAL PN.	-	WIRE		2.05mm[.081 IN]	F	0.50-1.00mm2
-	-	INSUL		3.30mm[.130 IN]	F	Ø 2.0-2.7mm
WIRE STRIP LENGTH	TERM APPL SPEC		FEED	APPL INSTRUCTIONS	SET UP GAGE	
3.7-4.3 mm	114-18050-1		14 mm	408-8040	458637-1	

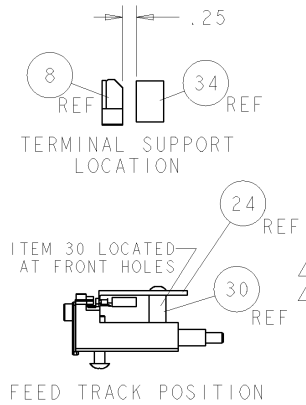
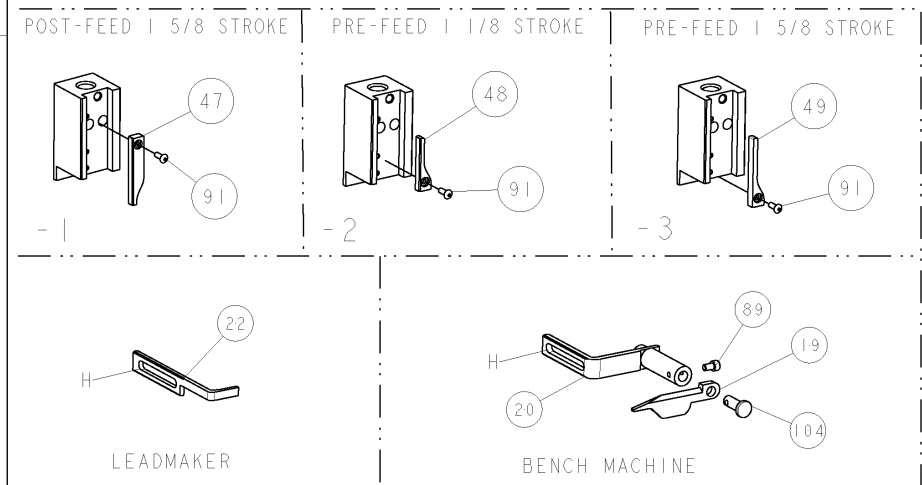
- 1 RECOMMENDED SPARE PARTS
 2 GREASE LIGHTLY
 3 GUARD MUST BE IN PLACE WHEN OPERATING APPLICATOR IN A BENCH MACHINE
 4 LUBRICATOR REQUIRED WITH GOLD OR SILVER PLATED TERMINALS

*WARNING
 ON INSTALLATION, SET WIRE DISC TO LARGEST WIRE SIZE SETTING. USE OF SETTING BELOW MIN REQUIRED CRIMP HEIGHT SETTING WILL CAUSE DAMAGE TO CRIMP TOOLING.

-	-	-	-	-	-	-	-	-	-	125
1	1	1	-	217238-1	GENERAL INSTRUCTION PKG	-	-	-	-	124
1	1	1	-	4088040	SF APPL INST 408-8040	-	-	-	-	123
-	-	-	-	-	-	-	-	-	-	122
-	-	-	-	-	-	-	-	-	-	121
-	-	-	-	-	-	-	-	-	-	120
-	-	-	-	-	-	-	-	-	-	119
-	-	-	-	-	-	-	-	-	-	118
1	1	1	-	21024-5	WASHER, SPRG LOCK, REG NO 10	-	-	-	-	117
-	-	-	-	-	-	-	-	-	-	116
-	-	-	-	-	-	-	-	-	-	115
-	-	-	-	-	-	-	-	-	-	114
-	-	-	-	-	-	-	-	-	-	113
-	-	-	-	-	-	-	-	-	-	112
4	4	4	-	21024-4	WASHER, SPRG LOCK, REG NO 8	-	-	-	-	111
-	-	-	-	-	-	-	-	-	-	110
-	1	1	-	2-21002-6	SCR, BTN SKT HD CAP 10-32 X .375	-	-	-	-	109
1	1	1	-	21018-5	NUT, HEX, REG 6-32	-	-	-	-	108
-	-	-	-	-	-	-	-	-	-	107
-	-	-	-	-	-	-	-	-	-	106
-	-	-	-	-	-	-	-	-	-	105
1	1	-	-	992031-1	PIN, CLEVIS	-	-	-	-	104
1	1	1	-	21009-2	SCR, SET, SELF LOCKING 1/4-20 X .250	-	-	-	-	103
2	2	2	-	21017-2	SCREW, DRIVE	-	-	-	-	102
-	-	-	-	-	-	-	-	-	-	101
1	1	1	-	461264-5	PLATE, IDENTIFICATION	-	-	-	-	100
-	-	-	-	-	-	-	-	-	-	99
1	1	1	-	22733-8	SCR, BHSC, SELF-LOCKING, 8-32 X .375	-	-	-	-	98
-	-	-	-	-	-	-	-	-	-	97
-	-	-	-	-	-	-	-	-	-	96
-	-	-	-	-	-	-	-	-	-	95
4	4	4	-	2-21002-2	SCR, BTN SKT HD CAP 8-32 X .500	-	-	-	-	94
2	2	2	-	2-21002-4	SCR, BTN SKT HD CAP 8-32 X .750	-	-	-	-	93
-	-	-	-	-	-	-	-	-	-	92
1	1	1	-	1-21002-7	SCR, BTN SKT HD CAP 6-32 X .375	-	-	-	-	91
-	-	-	-	-	-	-	-	-	-	90
1	1	-	-	7-21000-9	SCR, SKT HD CAP 4-40 X .188	-	-	-	-	89
-	-	-	-	-	-	-	-	-	-	88
2	2	2	-	2-21000-7	SCR, SKT HD CAP 8-32 X .500	-	-	-	-	87
1	1	1	-	2-22603-0	SCR, HEX HD CAP 8-32 X .312	-	-	-	-	86
-	-	-	-	-	-	-	-	-	-	85
1	1	1	-	2-21000-7	SCR, SKT HD CAP 8-32 X .500	-	-	-	-	84
-	-	-	-	-	-	-	-	-	-	83
-	-	-	-	-	-	-	-	-	-	82
1	1	1	-	3-21000-4	SCR, SKT HD CAP 10-32 X .375	-	-	-	-	81
-	-	-	-	-	-	-	-	-	-	80
-	REF	-	-	455749-1	GUARD WINDOW	-	-	-	-	79
-	REF	-	-	679532-1	INSERT, GUARD	-	-	-	-	78
-	1	-	-	1-465184-0	LUBRICATOR ASSY	-	-	-	-	77
-	-	-	-	-	-	-	-	-	-	76
-	-	-	-	-	-	-	-	-	-	75
-	-	-	-	-	-	-	-	-	-	74
-3	-2	-1	U/M	PART NO	DESCRIPTION					

REVIEWS									
REV	DATE	BY	CHKD	APPD	DESCRIPTION	DATE	BY	CHKD	APPD
A	28JAN2005	LG	TE		RELEASED	28JAN2005	LG	TE	
A1	14FEB2005	LG	TE		EC 0150-0136-05	14FEB2005	LG	TE	
B	01JUL2005	LG	TE		ECR 05-006080	01JUL2005	LG	TE	

-	-	-	-	-	-	-	-	-	-	73
-	-	-	-	-	-	-	-	-	-	72
-	-	-	-	-	-	-	-	-	-	71
-	-	-	-	-	-	-	-	-	-	70
-	-	-	-	-	-	-	-	-	-	69
-	-	-	-	-	-	-	-	-	-	68
-	-	-	-	-	-	-	-	-	-	67
-	-	-	-	-	-	-	-	-	-	66
-	-	-	-	-	-	-	-	-	-	65
-	-	-	-	-	-	-	-	-	-	64
-	-	-	-	-	-	-	-	-	-	63
-	-	-	-	-	-	-	-	-	-	62
-	-	-	-	-	-	-	-	-	-	61
-	-	-	-	-	-	-	-	-	-	60
-	-	-	-	-	-	-	-	-	-	59
-	-	-	-	-	-	-	-	-	-	58
-	-	-	-	-	-	-	-	-	-	57
1	1	1	-	458537-2	PAWL, FEED	-	-	-	-	56
-	-	-	-	-	-	-	-	-	-	55
-	-	-	-	-	-	-	-	-	-	54
-	-	-	-	-	-	-	-	-	-	53
-	-	-	-	-	-	-	-	-	-	52
1	1	1	-	811242-2	BUMPER, HOLD DOWN	-	-	-	-	51
1	1	1	-	690753-1	SPACER, TONKER	-	-	-	-	50
1	-	-	-	690602-6	CAM, PRE FEED, 1 5/8	-	-	-	-	49
-	1	-	-	690602-5	CAM, PRE FEED, 1 1/8	-	-	-	-	48
-	-	1	-	690501-4	CAM, POST FEED, 1 5/8	-	-	-	-	47
1	1	1	-	459456-1	APPL. BASIC SUB ASSEMBLY	-	-	-	-	46
1	1	1	-	690191-1	PLUG, NYLON	-	-	-	-	45
1	1	1	-	455673-1	RAM	-	-	-	-	44
-	-	-	-	-	-	-	-	-	-	43
-	-	-	-	-	-	-	-	-	-	42
1	1	1	-	7-21002-9	SCR, BTN SKT HD CAP 5/16-24 X 1.00	-	-	-	-	41
-	-	-	-	-	-	-	-	-	-	40
1	1	1	-	690125-1	SHIM SUB-ASSY	-	-	-	-	39
1	1	1	-	469367-9	SHIM	-	-	-	-	38
1	1	1	-	879103-2	FINE ADJUST HEAD SUBASSY	-	-	-	-	37
-	-	-	-	-	-	-	-	-	-	36
-	-	-	-	-	-	-	-	-	-	35
1	1	1	-	690786-6	TERMINAL SUPPORT	-	-	-	-	34
-	-	-	-	-	-	-	-	-	-	33
-	-	-	-	-	-	-	-	-	-	32
-	-	-	-	-	-	-	-	-	-	31
1	1	1	-	1320908-1	SPACER, STRIP GUIDE	-	-	-	-	30
1	1	1	-	1633091-1	SUB-ASSEMBLY, FEEDTRACK	-	-	-	-	29
1	1	1	-	1-455888-5	SPACER, CRIMPER	-	-	-	-	28
-	-	-	-	-	-	-	-	-	-	27
-	-	-	-	-	-	-	-	-	-	26
-	-	-	-	-	-	-	-	-	-	25
1	1	1	-	1320928-3	PLATE, STRIP GUIDE	-	-	-	-	24
-	-	-	-	-	-	-	-	-	-	23
-	-	1	-	690472-2	STRIPPER	-	-	-	-	22
-	-	-	-	-	-	-	-	-	-	21
1	1	-	-	679218-1	STRIPPER/ WIRE STOP ASSY	-	-	-	-	20
1	1	-	-	458949-1	STRIPPER, SIDE	-	-	-	-	19
-	-	-	-	-	-	-	-	-	-	18
-	-	-	-	-	-	-	-	-	-	17
1	1	1	-	318563-1	GUARD, FRONT CHIP	-	-	-	-	16
-	-	-	-	-	-	-	-	-	-	15
-	-	-	-	-	-	-	-	-	-	14
-	-	-	-	-	-	-	-	-	-	13
1	1	1	-	5-22280-0	SPRING, COMPRESSION	-	-	-	-	12
1	1	1	-	690461-1	STOP, SHEAR	-	-	-	-	11
1	1	1	-	690459-1	SHEAR HOLDER, FRONT	-	-	-	-	10
1	1	1	-	1-454276-9	FLOATING SHEAR, FRONT	-	-	-	-	9
1	1	1	-	9-803653-3	ANVIL, COMBINATION	-	-	-	-	8
1	1	1	-	1-240641-7	SPACER	-	-	-	-	7
-	-	-	-	-	-	-	-	-	-	6
1	1	1	-	1-455889-4	DEPRESSOR, SHEAR	-	-	-	-	5
1	1	1	-	238011-7	BLOCK, CRIMPER SPACER	-	-	-	-	4
1	1	1	-	456134-5	CRIMPER, INSULATION F PREMIUM	-	-	-	-	3
1	1	1	-	455888-4	SPACER, CRIMPER	-	-	-	-	2
1	1	1	-	1-456405-5	CRIMPER, WIRE PREMIUM	-	-	-	-	1



Mouser Electronics

Authorized Distributor

Click to View Pricing, Inventory, Delivery & Lifecycle Information:

[TE Connectivity:](#)

[1385891-1](#)