

# Contact insert - RC-06P1NS20000 - 1593555

Please be informed that the data shown in this PDF Document is generated from our Online Catalog. Please find the complete data in the user's documentation. Our General Terms of Use for Downloads are valid (<http://phoenixcontact.com/download>)



Contact insert, number of positions: 6, type of contact: Pin, Screw connection

RoHS

## Key Commercial Data

|                        |               |
|------------------------|---------------|
| Packing unit           | 10 pc         |
| Minimum order quantity | 10 pc         |
| GTIN                   |               |
| GTIN                   | 4046356196857 |

## Technical data

### General

|  |                      |
|--|----------------------|
| Insertion/withdrawal cycles mechanical             | 50                   |
| Direction of rotation of contact chamber numbering | Standard             |
| Coding   | N                    |
| Contact connection method                          | Screw connection     |
| Type of contacts                                   | Pin                  |
| Number of positions                                | 6                    |
| Contact diameter of power contacts                 | 2 mm                 |
| Litz wire cross section of power contacts min.     | 0.08 mm <sup>2</sup> |
| Litz wire cross section of power contacts max.     | 1 mm <sup>2</sup>    |
| Nominal current per power contact at 25°C          | 20 A                 |

### Material

|                    |                             |
|--------------------|-----------------------------|
| Insulator material | PBT                         |
| Contact material   | CuZn                        |
| Contact surface    | Nickel-plated, gold coating |

### Specifications according to DIN EN 61984:2001

|   |       |
|---|-------|
| Nominal / operating voltage of power contacts | 300 V |
|---|-------|

# Contact insert - RC-06P1NS20000 - 1593555

## Technical data

Specifications according to DIN EN 61984:2001

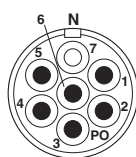
|   |        |
|---|--------|
| Rated surge voltage of power contacts   | 2.5 kV |
| Overvoltage category of power contacts  | II     |
| Degree of pollution of power contacts   | 3      |
| Overvoltage category of signal contacts | II     |
| Degree of pollution of signal contacts  | 3      |

## Environmental Product Compliance

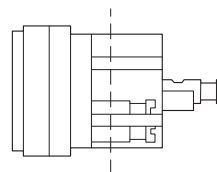
|            |   |
|------------|---|
| REACH SVHC | Lead 7439-92-1  |
| China RoHS | Environmentally Friendly Use Period = 50  |
|            | For details about hazardous substances go to tab "Downloads", Category "Manufacturer's declaration" |

## Drawings

Schematic diagram



Schematic diagram



## Approvals

Approvals

Approvals

EAC

Ex Approvals

Approval details

|     |  |         |
|-----|--|---------|
| EAC |  | B.01742 |
|-----|--|---------|

Phoenix Contact 2018 © - all rights reserved  
<http://www.phoenixcontact.com>

PHOENIX CONTACT GmbH & Co. KG  
Flachmarktstr. 8  
32825 Blomberg  
Germany  
Tel. +49 5235 300  
Fax +49 5235 3 41200  
<http://www.phoenixcontact.com>

# Mouser Electronics

Authorized Distributor

Click to View Pricing, Inventory, Delivery & Lifecycle Information:

[Phoenix Contact:](#)

[1593555](#)