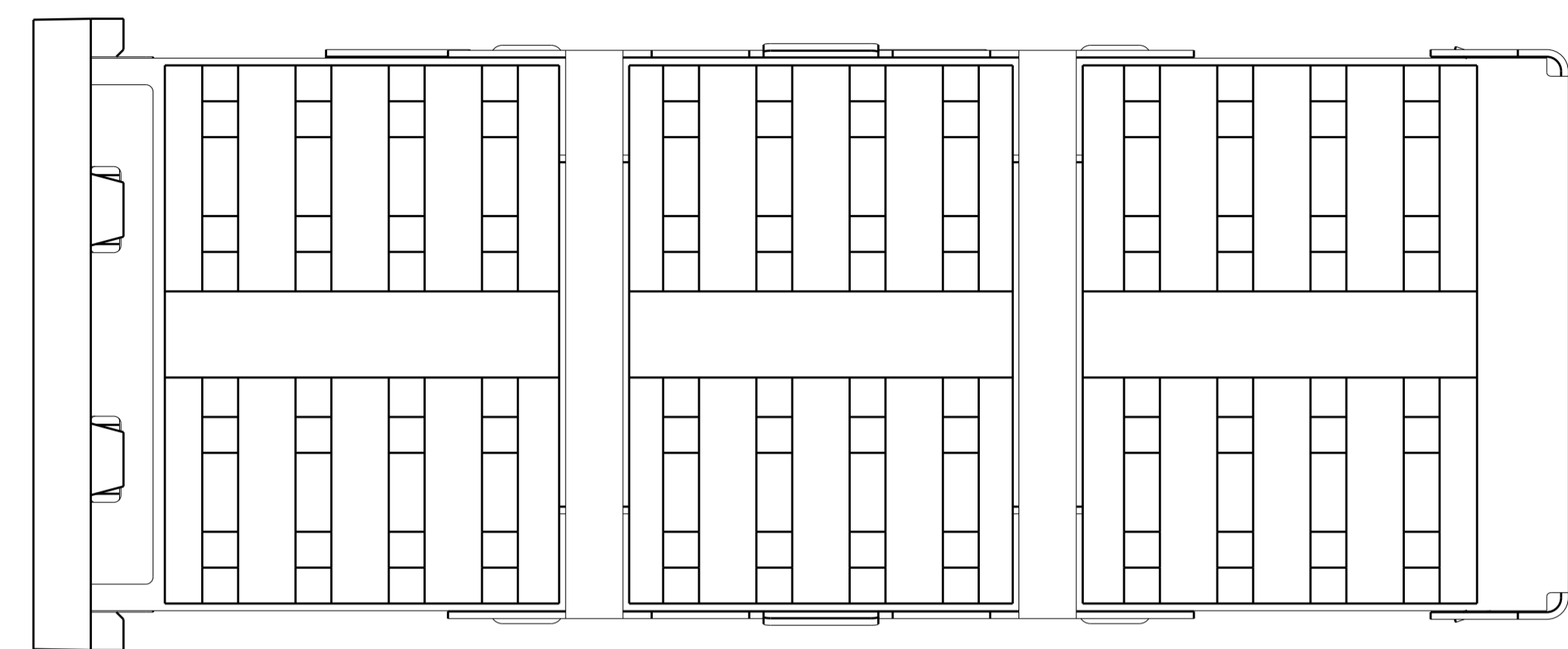
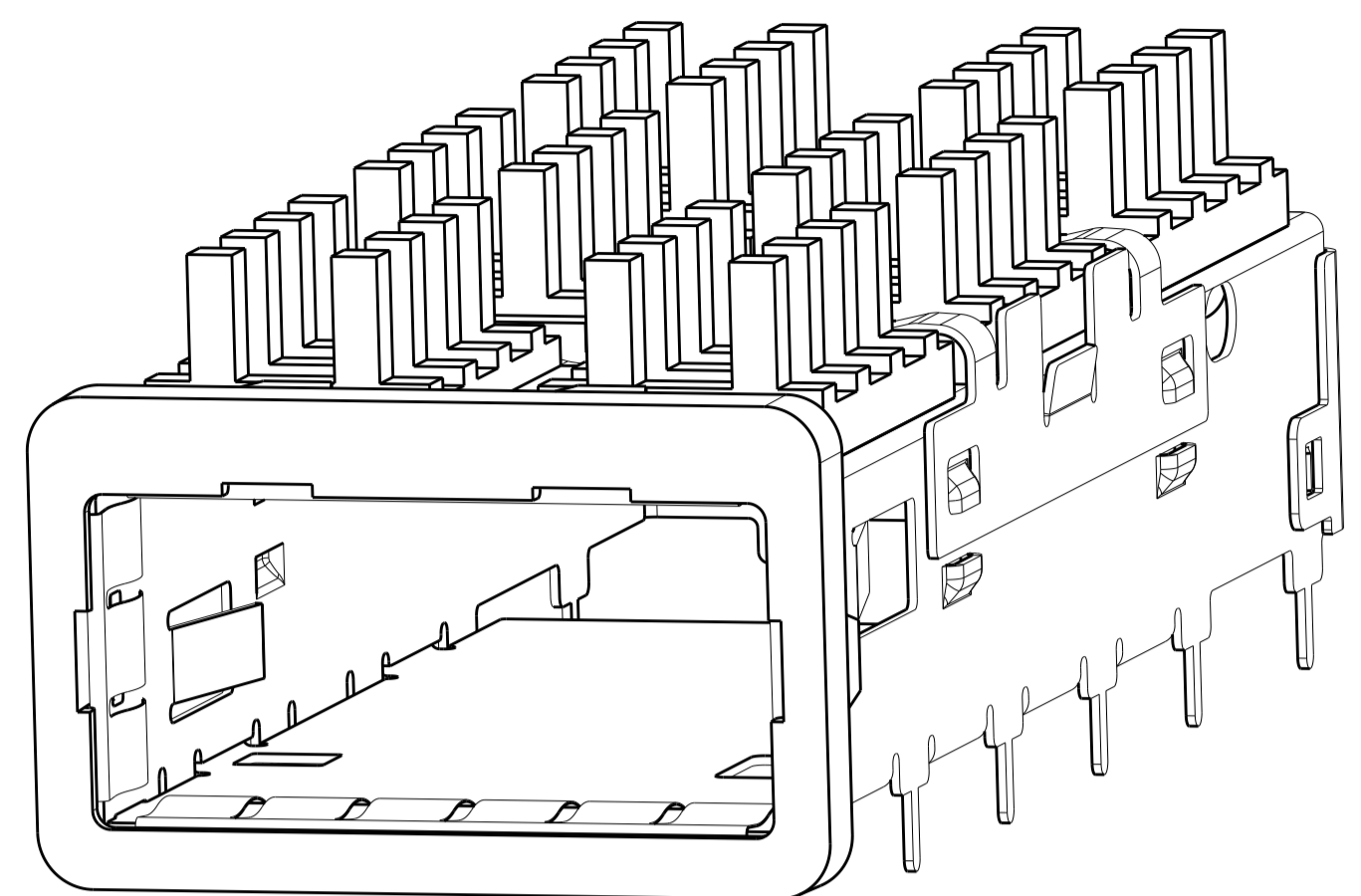
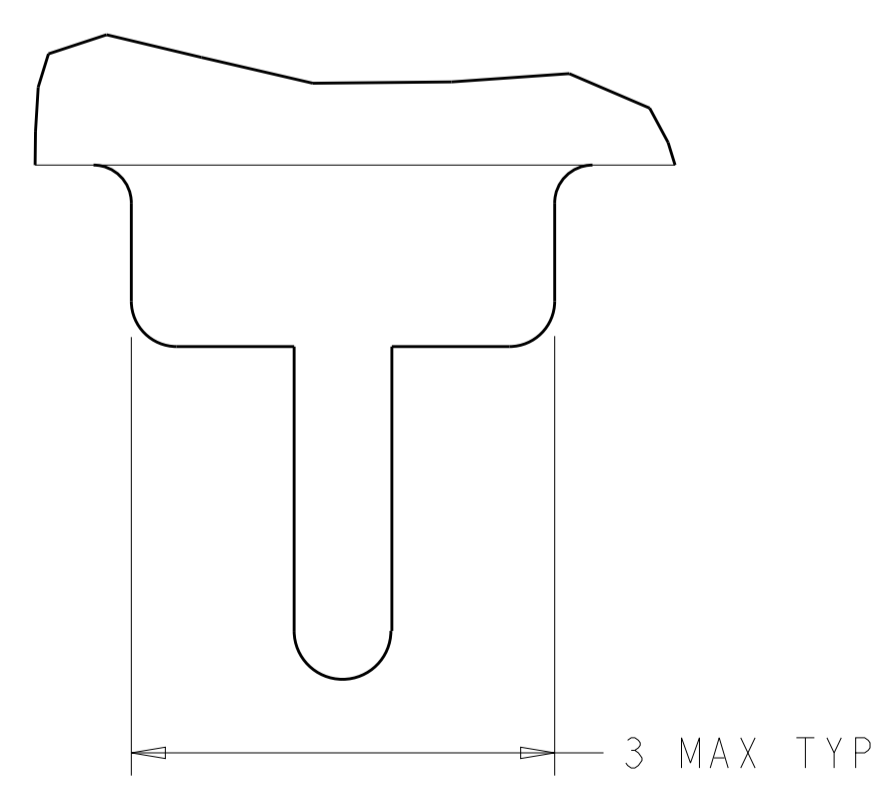
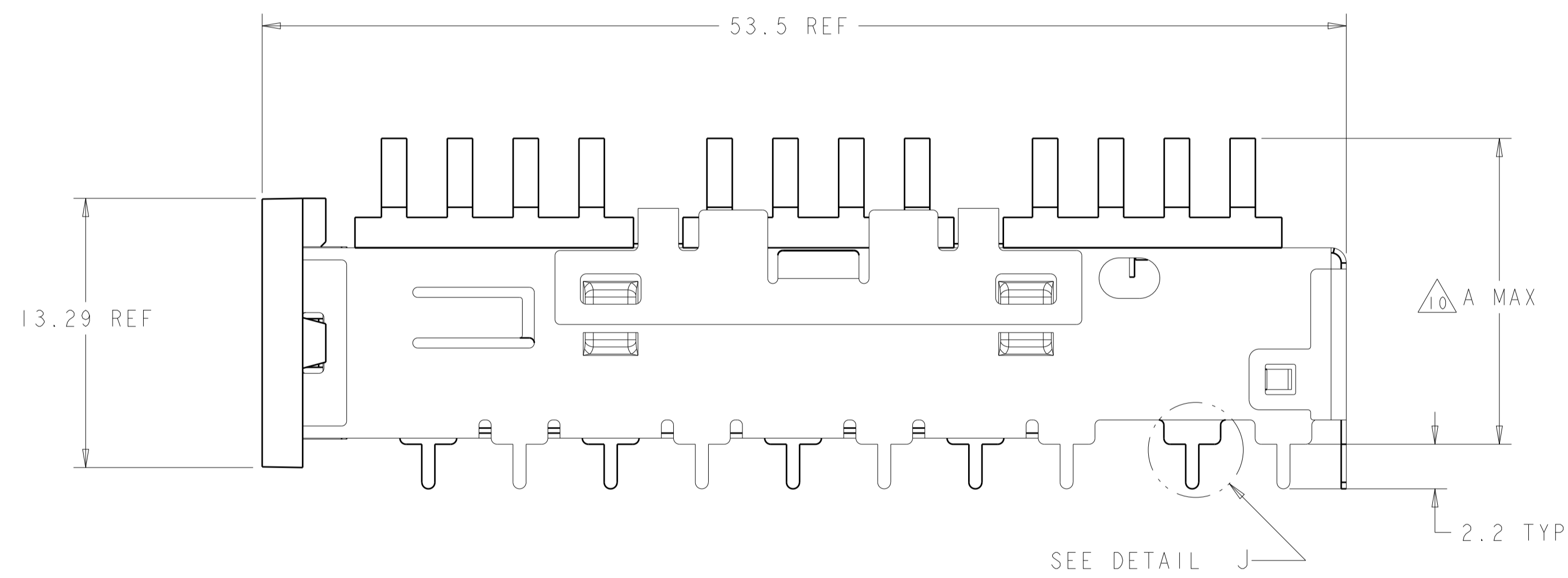
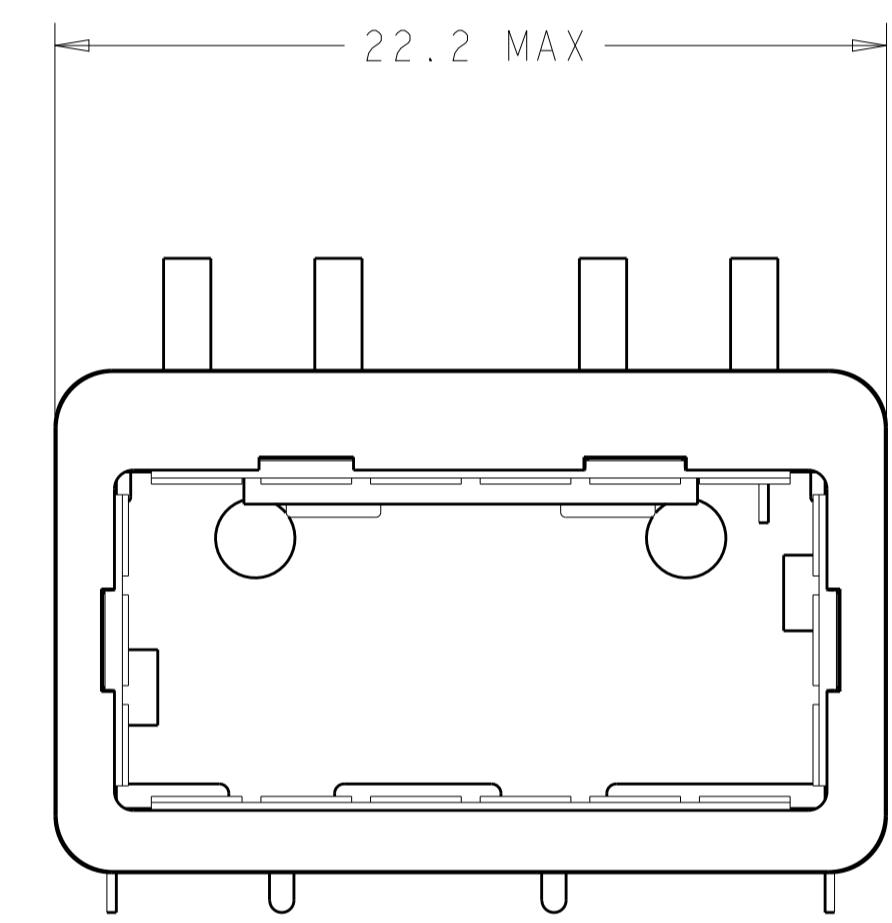


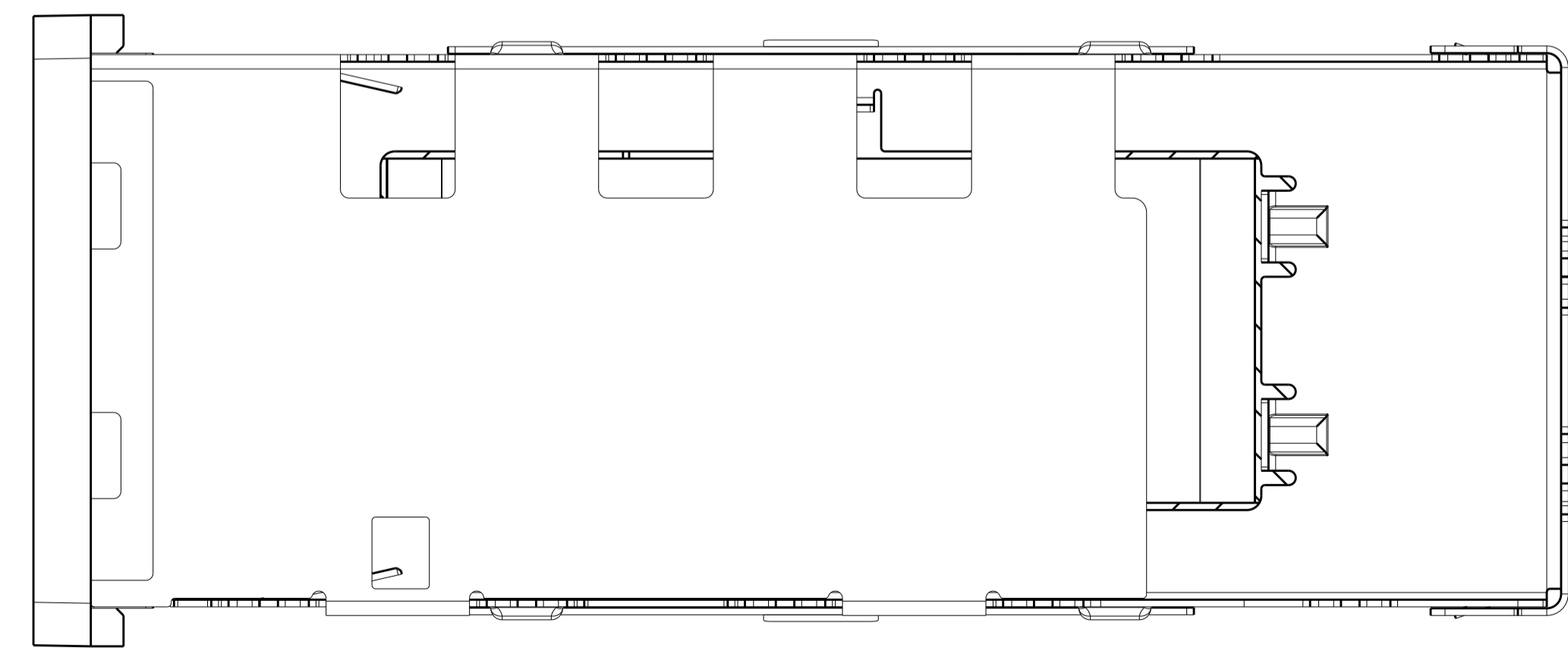
LOC		DIST		REVISIONS			
GP	00	P	LTN	DESCRIPTION	DATE	DMN	APV
		I		PRELIMINARY	23AUG2012	DZ	JY



- △ CAGE MATERIAL: NICKEL SILVER, 0.25 THICK
 HEAT SINK MATERIAL: ALUMINUM
 HEAT SINK CLIP MATERIAL: STAINLESS STEEL
 EMI SPRING MATERIAL: COPPER ALLOY
 FRONT FLANGE MATERIAL: ZINC ALLOY
- △ MINIMUM PITCH DIMENSION.
- 3. MATES WITH QSFP MSA COMPATIBLE TRANSCEIVER.
- △ REFERENCE APPLICATION SPEC 114-13218 FOR RECOMMENDED DRILL HOLE DIAMETER AND PLATING THICKNESS.
- △ DATUMS AND BASIC DIMENSIONS ESTABLISHED BY CUSTOMER.
- △ DIMENSION C IS THE NOMINAL THICKNESS OF CUSTOMER SUPPLIED PC BOARD, SINGLE SIDED PC BOARD MINIMUM THICKNESS: 1.45
- △ HEAT SINK AND CLIP SHIPPED ASSEMBLED TO CAGE ASSEMBLY. CAGE ASSEMBLY MAY BE PRESSED INTO THE PCB AS SHIPPED.
- △ DATUM -A- IS TOP SURFACE OF HOST BOARD.
- △ SURFACE TRACES PERMITTED WITHIN THIS AREA EXCEPT WHERE CAGE STANDOFFS, SHOWN IN DETAIL J, CONTACT PC BOARD.
- △ DIMENSION APPLIES WITH MODULE INSTALLED IN THE CAGE.
- △ DATE CODE (YYWW) MARKED ON TOP OF CAGE AND CONCEALED BY HEAT SINK APPLIES TO CAGE ASSEMBLY ONLY.
- △ EMI SPRING FINISH: 2µm MIN TIN.
 FRONT FLANGE FINISH: 3µm MIN TIN OVER 1.27µm MIN NICKEL OVER 5.08µm MIN COPPER.
 HEAT SINK FINISH: 0.076µm MIN NICKEL.
- 13. PRODUCT HAS NOT COMPLETED QUALIFICATION TESTING.



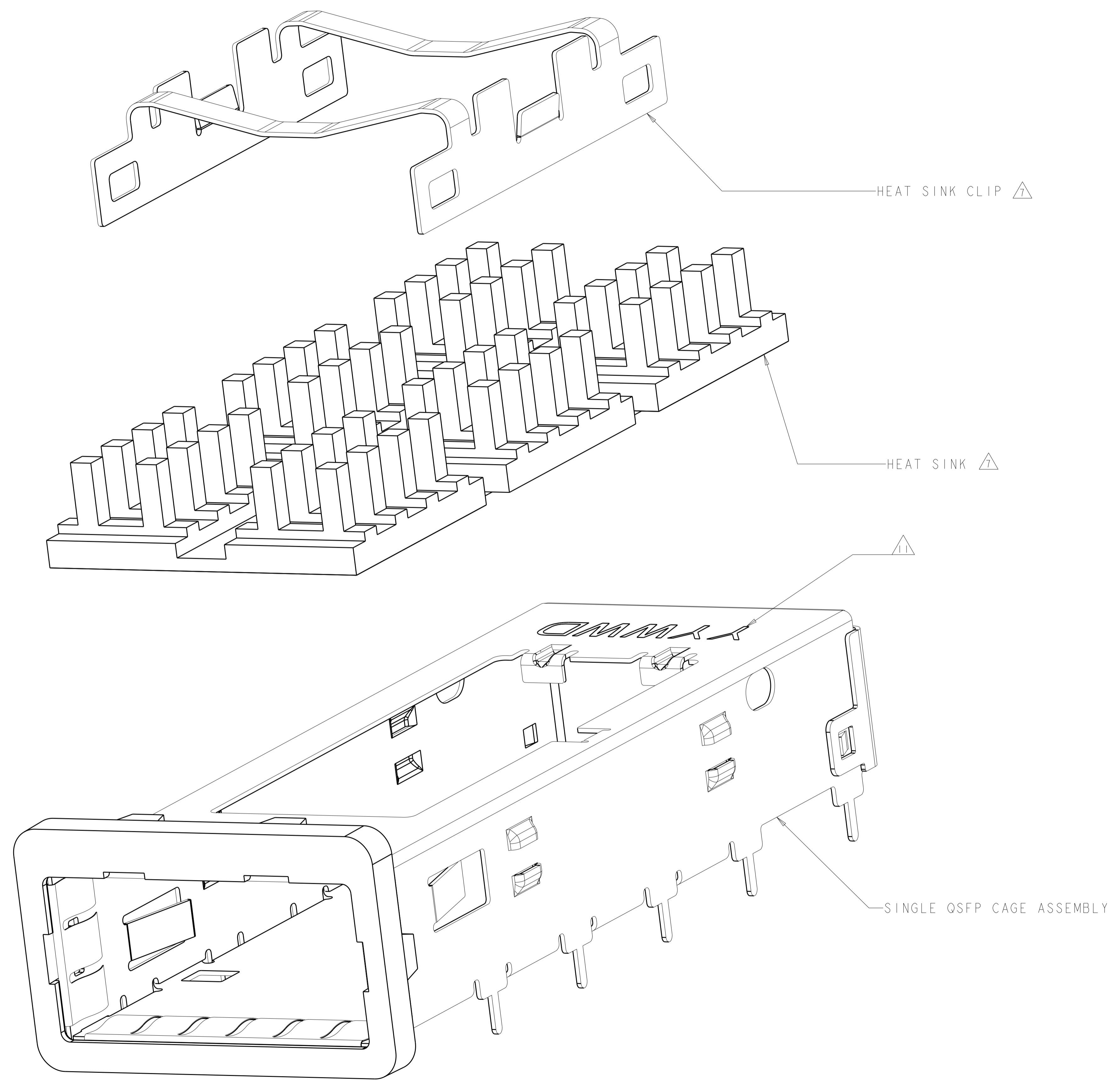
DETAIL J
 SCALE 20:1



13.7	PCI HEAT SINK	2170395-1
A	DESCRIPTION	PART NUMBER
CAGE ASSEMBLY, BEHIND BEZEL, QSFP WITH HEAT SINK		
DIMENSIONS: mm 0 PLC ±0.5 2 PLC ±0.13 3 PLC ±0.013 4 PLC ±0.0001 ANGLES ±0.0001		TOLERANCES UNLESS OTHERWISE SPECIFIED: FINISH △2
THIS DRAWING IS A CONTROLLED DOCUMENT. DWG: D ZHU 23AUG2012 CHG: J LANG 23AUG2012 APV: A MAL 23AUG2012		NAME: CAGE ASSEMBLY, BEHIND BEZEL, QSFP WITH HEAT SINK PRODUCT SPEC: 108-2286 APPLICATION SPEC: 114-13218 WEIGHT: - SIZE: CAGE CODE DRAWING NO: A100779C=2170395 RESTRICTED TO: -
Customer Drawing		SCALE 2:1 SHEET 1 OF 4 REV 1

DESIGN APPROVED THIS PRINT IS
PRELIMINARY
 TO FIRST PIECE APPROVAL
 CONTACT PRODUCT ENGINEERING
 BEFORE USING THIS PRINT

LOC	DIST	REVISIONS			
P	LTN	DESCRIPTION	DATE	DMN	APVD
GP	00	SEE SHEET 1	-	-	-

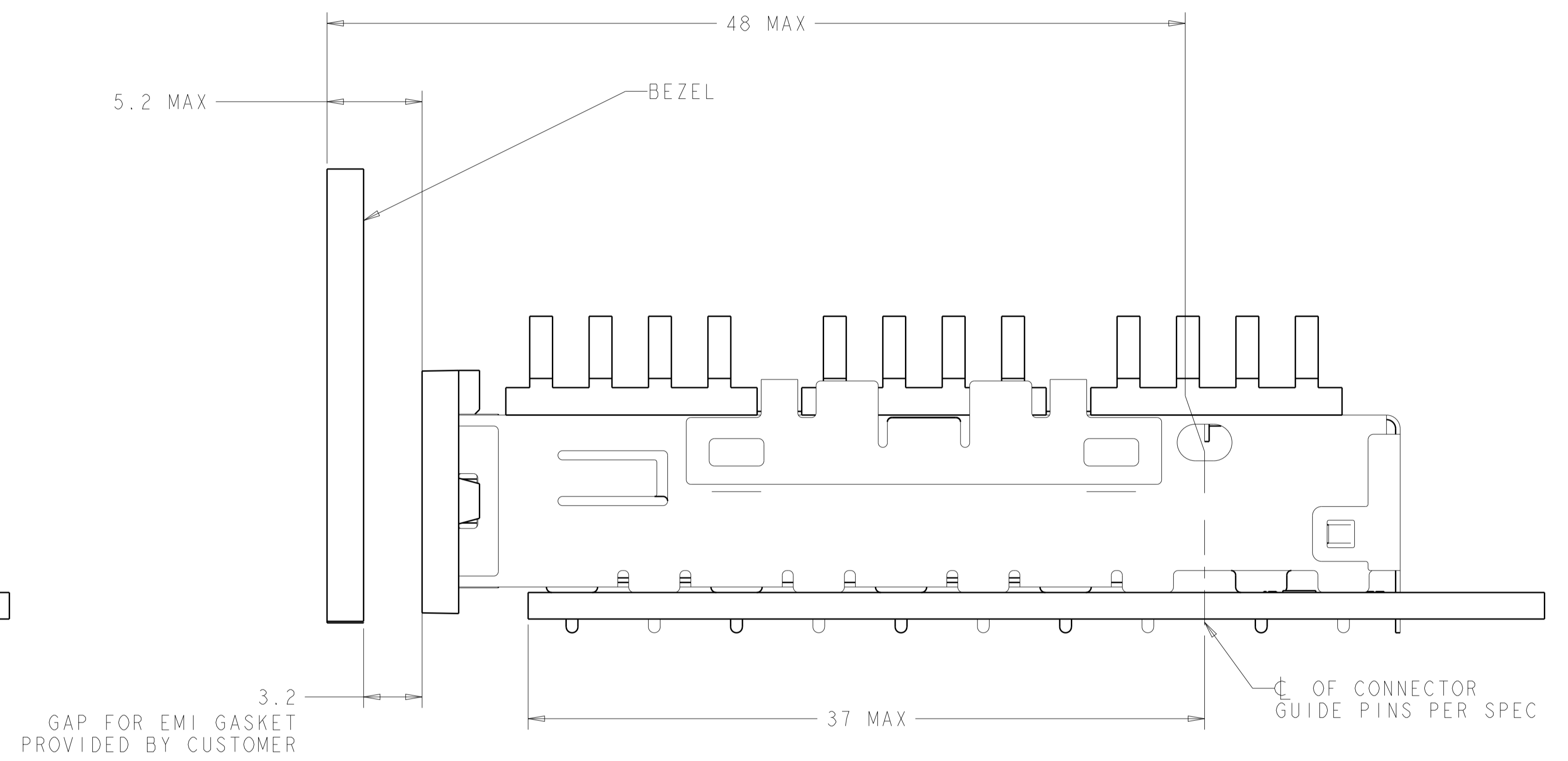
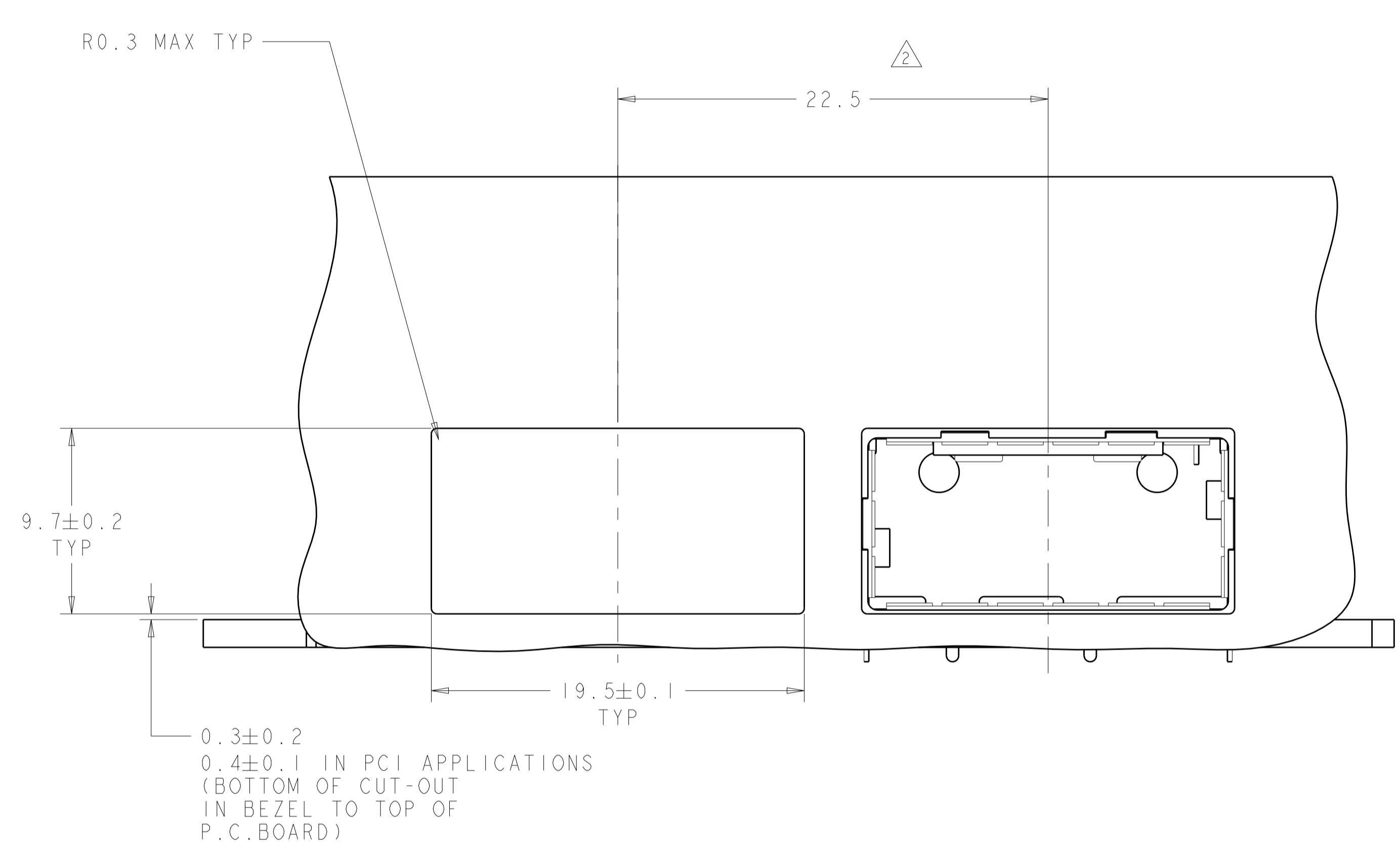


EXPLODED VIEW
 SCALE 8:1

DESIGN APPROVED THIS PRINT IS
PRELIMINARY
 TO FIRST PIECE APPROVAL
 CONTACT PRODUCT ENGINEERING
 BEFORE USING THIS PRINT

THIS DRAWING IS A CONTROLLED DOCUMENT.		DMN D. ZHU	23AUG2012	TE Connectivity NAME CAGE ASSEMBLY, BEHIND BEZEL, QSPF WITH HEAT SINK PRODUCT SPEC 108-2286 APPLICATION SPEC 114-13218 WEIGHT - Customer Drawing	RESTRICTED TO	
DIMENSIONS:		CHK J. YANG	23AUG2012		SIZE	A1
TOLERANCES UNLESS OTHERWISE SPECIFIED:		APVD A. CAI	23AUG2012		CAGE CODE	2170395
mm					SCALE	2:1
0 PLC	±			SHEET	2 OF 4	
1 PLC	±0.5			REV	1	
2 PLC	±0.13					
3 PLC	±0.013					
4 PLC	±0.001					
ANGLES	±					
FINISH						

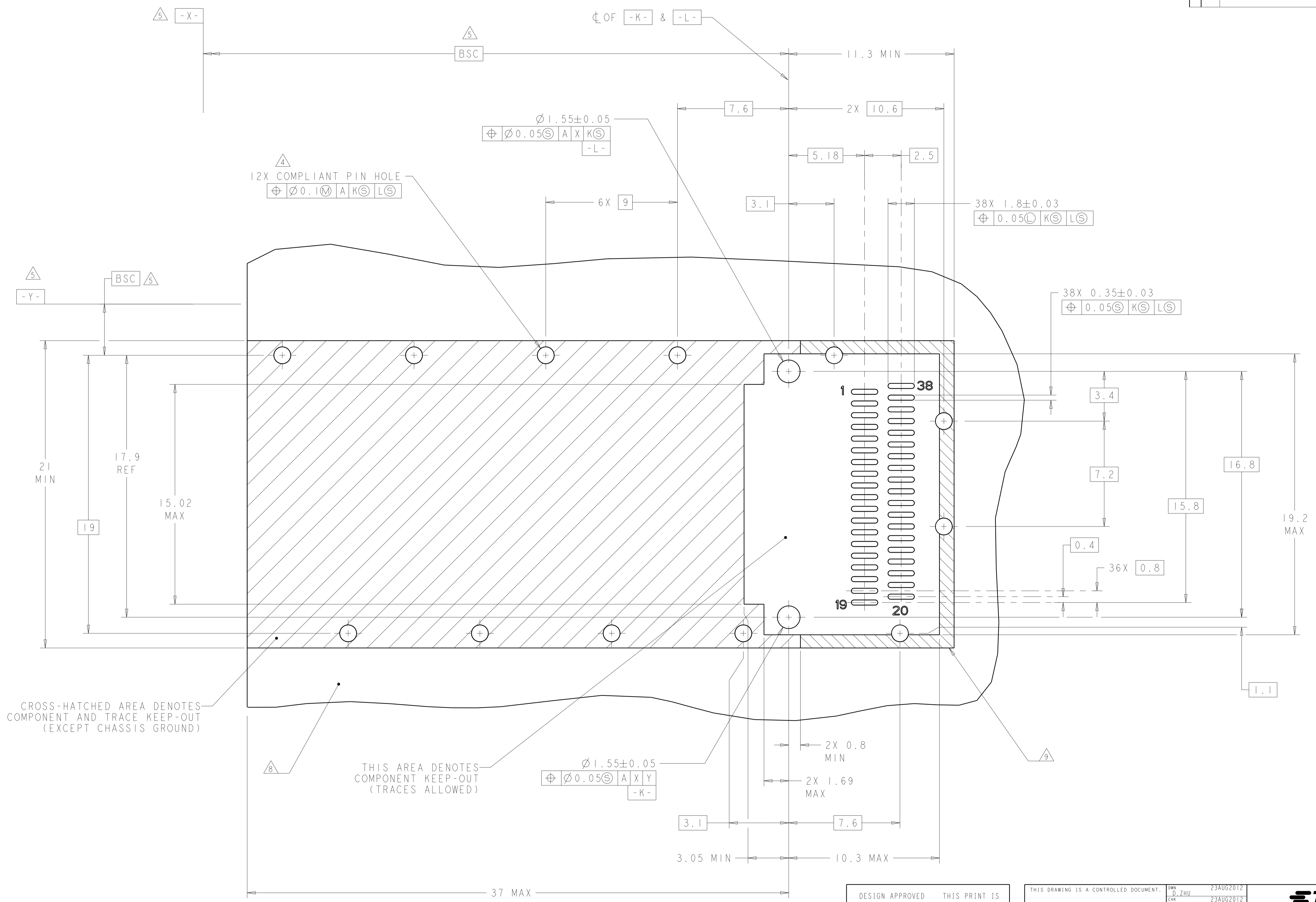
LOC	DIST	REVISIONS					
GP	00	P.	LTN	DESCRIPTION	DATE	DWN	APVD
-	-	-	-	SEE SHEET 1	-	-	-



DESIGN APPROVED THIS PRINT IS
PRELIMINARY
 TO FIRST PIECE APPROVAL
 CONTACT PRODUCT ENGINEERING
 BEFORE USING THIS PRINT

THIS DRAWING IS A CONTROLLED DOCUMENT.		DWN D. ZHU	23AUG2012	STE TE Connectivity
DIMENSIONS: mm		CHK J. YANG	23AUG2012	
TOLERANCES UNLESS OTHERWISE SPECIFIED:		APVD A. CAI	23AUG2012	NAME CAGE ASSEMBLY, BEHIND BEZEL, QSFP, WITH HEAT SINK
0 PLC ±	1 PLC ±0.5	PRODUCT SPEC	108-2286	SIZE A1
2 PLC ±0.13	3 PLC ±0.013	APPLICATION SPEC	114-13218	CAGE CODE 2170395
4 PLC ±0.0001	ANGLES ±	WEIGHT	-	RESTRICTED TO
MATERIAL	FINISH	Customer Drawing	SCALE 2:1	SHEET 3 OF 4

LOC	DIST	REVISIONS					
		P	LTN	DESCRIPTION	DATE	DWN	APVD
GP	00	-	-	SEE SHEET 1	-	-	-



CROSS-HATCHED AREA DENOTES COMPONENT AND TRACE KEEP-OUT (EXCEPT CHASSIS GROUND)

THIS AREA DENOTES COMPONENT KEEP-OUT (TRACES ALLOWED)

Ø1.55±0.05
 ⊕ Ø0.05Ⓢ | A X Y
 -K-

RECOMMENDED PCB LAYOUT
 SINGLE SIDED CONFIGURATION
 SCALE 8:1

DESIGN APPROVED THIS PRINT IS
PRELIMINARY
 TO FIRST PIECE APPROVAL
 CONTACT PRODUCT ENGINEERING
 BEFORE USING THIS PRINT

THIS DRAWING IS A CONTROLLED DOCUMENT.		DWN D. ZHU 23AUG2012	23AUG2012	TE Connectivity
DIMENSIONS: mm		CHK J. YANG 23AUG2012	23AUG2012	
TOLERANCES UNLESS OTHERWISE SPECIFIED:		APVD A. CAI 23AUG2012		NAME CAGE ASSEMBLY, BEHIND BEZEL, QSFP WITH HEAT SINK
0 PLC ±0.5	1 PLC ±0.13	PRODUCT SPEC	108-2286	RESTRICTED TO
2 PLC ±0.13	3 PLC ±0.013	APPLICATION SPEC	114-13218	SIZE A1
4 PLC ±0.001	ANGLES ±0.0001	WEIGHT	114-13218	CAGE CODE 2170395
MATERIAL	FINISH	Customer Drawing	SCALE 2:1	SHEET 4 OF 4

Mouser Electronics

Authorized Distributor

Click to View Pricing, Inventory, Delivery & Lifecycle Information:

[TE Connectivity:](#)

[2170395-1](#)