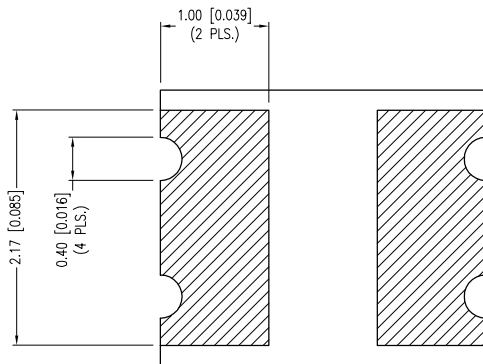
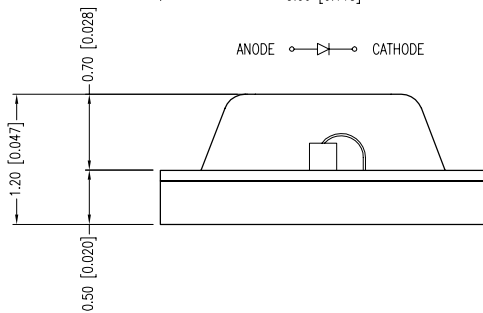
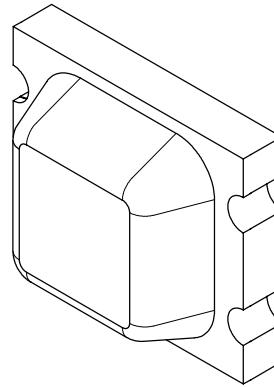
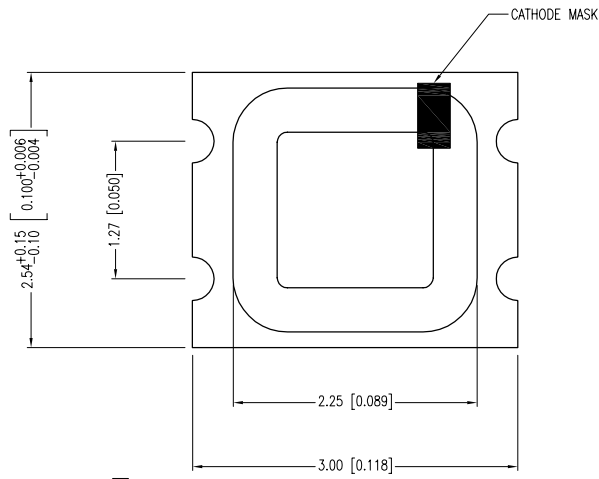
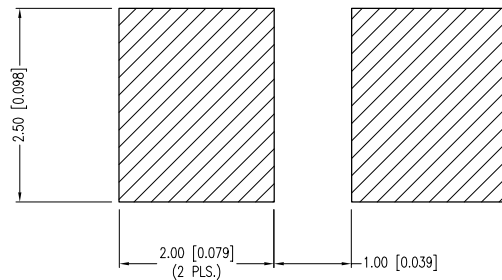


| PART NUMBER | CCL-CRS10G | REV. | G |
|-------------|-------------------------------------|------|------|
| DATE | E.C.N. NUMBER AND REVISION COMMENTS | | REV. |
| 04.27.93 | REDRAWN. | | A |
| 10.02.98 | E.C.N. #10390 & #10BRDR & REDRAWN. | | B |
| 12.11.98 | E.C.N. #10484. ADDED SOLDER SPECS. | | C |
| 01.12.01 | E.C.N. #10695. & REDRAWN. | | D |
| 03.14.03 | E.C.N. #10967. | | E |
| 12.01.06 | E.C.N. #11148. | | F |
| 06.17.11 | E.C.N. #10BRDR. & REDRAWN/#11730. | | G |



RECOMMENDED SOLDER PAD LAYOUT



| ELECTRO-OPTICAL CHARACTERISTICS TA =25°C If=20mA | | | | | |
|--|-------------|------|-----|----------|-----------|
| PARAMETER | MIN | TYP. | MAX | UNITS | TEST COND |
| PEAK WAVELENGTH | | 565 | | nm | |
| FORWARD VOLTAGE | | 2.2 | 2.6 | Vf | |
| REVERSE VOLTAGE | 4.0 | | | Vr | Ir=100µA |
| AXIAL INTENSITY | | 12 | | mcd | If=20mA |
| VIEWING ANGLE | | 180 | | 2x theta | |
| EMITTED COLOR: | GREEN | | | | |
| EPOXY LENS FINISH: | WATER CLEAR | | | | |

| LIMITS OF SAFE OPERATION AT 25°C | | |
|----------------------------------|------------|-------|
| PARAMETER | MAX | UNITS |
| PEAK FORWARD CURRENT* | 100 | mA |
| STEADY CURRENT | 25 | mA |
| POWER DISSIPATION | 65 | mW |
| DERATE FROM 25°C | -.33 | mW/°C |
| OPERATING TEMP. | -30 TO +75 | °C |
| STORAGE TEMP. | -40 TO +85 | °C |

* t<10µs

| | |
|-------------------------|---|
| SOLDER HEAT PROOF TEST: | DIPPING FOR 5 SEC. AT 250°C, 2 TIMES. |
| THERMAL SHOCK TEST: | 15 MIN. AT +90°C, AND 15 MIN. AT -30°C, 25 CYCLES. |
| VIBRATION TEST: | 50Hz, FULL AMPLITUDE WIDTH; 1.5mm, 2 HOURS VERTICALLY AND HORIZONTALLY, RESPECTIVELY. |
| MOISTURE TEST: | Ta=60°C, Rh=90%, 1,000 HOURS. |
| IRON SOLDERING: | 20W IRON (SHARP TIP), 280-320°C, 5 SEC. MAX., |
| SOLDER DIP METHOD: | TEMP. IS 240-260°C AND TIME IS WITHIN 10 SEC. |
| RE-FLOW SOLDERING: | SEE CHART. |

[E] [C] CAUTION: MOISTURE SENSITIVE DEVICE PER JEDEC LEVEL 2A STANDARDS

*UNLESS OTHERWISE SPECIFIED TOLERANCES PER DECIMAL PRECISION ARE: X=±1 (±0.039), X.X=±0.5 (±0.020), X.XX=±0.25 (±0.010), X.XXX=±0.127 (±0.005). LEAD SIZE=±0.05 (±0.002), LEAD LENGTH=±0.75 (±0.030). MIN.= +DECIMAL PRECISION MAX.= +0.00 -DECIMAL PRECISION

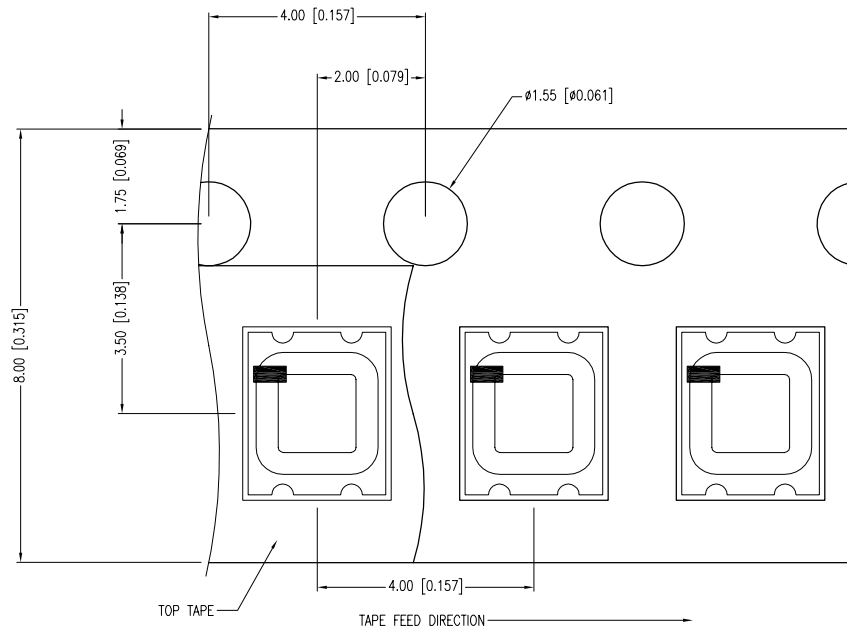
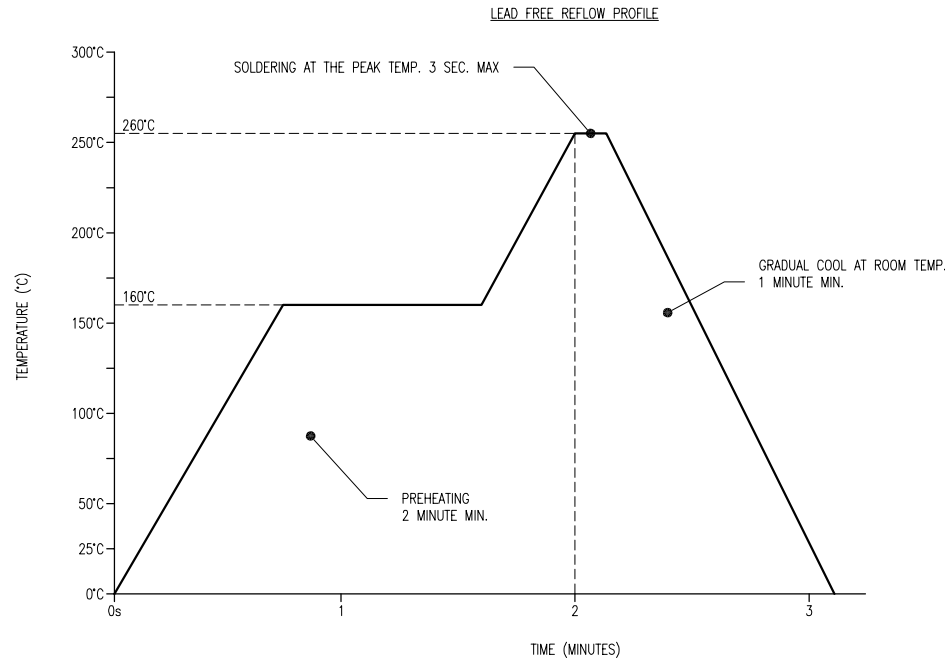
LUMEX
 Creating LED and LCD Solutions Together™
 290 E. HELEN ROAD
 PALATINE, IL 60067-6976
 PHONE: +1.847.359.2790
 FAX: +1.847.359.6538
 WEB: WWW.LUMEX.COM

3.0mm x 2.5mm CERAMIC SURFACE MOUNT LED, 565nm GREEN LED, WATER CLEAR LENS.

THE SPECIFICATIONS MAY CHANGE AT ANY TIME WITHOUT NOTICE DUE TO NEW MATERIALS OR PRODUCT IMPROVEMENT.

CONFIDENTIAL INFORMATION
 THE INFORMATION CONTAINED IN THIS DOCUMENT IS THE PROPERTY OF LUMEX INC. EXCEPT AS SPECIFICALLY AUTHORIZED IN WRITING BY LUMEX INC., THE HOLDER OF THIS DOCUMENT SHALL KEEP ALL INFORMATION CONTAINED HEREIN CONFIDENTIAL AND SHALL PROTECT SAME IN WHOLE OR IN PART FROM DISCLOSURE AND DISSEMINATION TO ALL THIRD PARTIES.

| | | | |
|--------|-----------|-----------|----|
| DATE: | 06.17.11 | DRAWN BY: | AB |
| PAGE: | 1 OF 2 | CHKD BY: | KF |
| SCALE: | NTS | APRVD BY: | SS |
| UNIT: | mm [INCH] | | Ⓟ |



NOTES:

1. PART SUPPLIED ON SUPER 8 TAPE AND REEL, 3,000 PIECES PER REEL.
2. THE CATHODE IS ORIENTED TOWARDS THE TAPE SPROCKET HOLE.
3. WHITE CERAMIC CARRIER.

*UNLESS OTHERWISE SPECIFIED TOLERANCES PER DECIMAL PRECISION ARE: X=±1 (±0.039), X.X=±0.5 (±0.020), X.XX=±0.25 (±0.010), X.XXX=±0.127 (±0.005). LEAD SIZE=±0.05 (±0.002), LEAD LENGTH=±0.75 (±0.030). MIN.= ^{+0.00}DECIMAL PRECISION MAX.= ^{-0.00}DECIMAL PRECISION

UNCONTROLLED DOCUMENT



290 E. HELEN ROAD
PALATINE, IL 60067-6976
PHONE: +1.847.359.2790
FAX: +1.847.359.6538
WEB: WWW.LUMEX.COM

3.0mm x 2.5mm CERAMIC SURFACE MOUNT LED, 565nm GREEN LED, WATER CLEAR LENS.

THE SPECIFICATIONS MAY CHANGE AT ANY TIME WITHOUT NOTICE DUE TO NEW MATERIALS OR PRODUCT IMPROVEMENT.

CONFIDENTIAL INFORMATION
THE INFORMATION CONTAINED IN THIS DOCUMENT IS THE PROPERTY OF LUMEX INC. EXCEPT AS SPECIFICALLY AUTHORIZED IN WRITING BY LUMEX INC., THE HOLDER OF THIS DOCUMENT SHALL KEEP ALL INFORMATION CONTAINED HEREIN CONFIDENTIAL AND SHALL PROTECT SAME IN WHOLE OR IN PART FROM DISCLOSURE AND DISSEMINATION TO ALL THIRD PARTIES.

| | | | |
|--------|-----------|-----------|----|
| DATE: | 06.17.11 | DRAWN BY: | AB |
| PAGE: | 2 OF 2 | CHKD BY: | KF |
| SCALE: | NTS | APRVD BY: | SS |
| UNIT: | mm [INCH] | | Ⓟ |

Mouser Electronics

Authorized Distributor

Click to View Pricing, Inventory, Delivery & Lifecycle Information:

[Lumex:](#)

[CCL-CRS10G](#)