

PLEASE CHECK WWW.MOLEX.COM FOR LATEST PART INFORMATION

Part Number:

0945504104

Status:

Active

Overview:

RAST 5 Connector System

Description:

5.00mm Pitch, Rast 5, PA Polyamide (Nylon) 6/6, UL 94V-2, 2 Circuits, Natural, Glow-Wire Capable

Documents:

- 3D Model

Application Specification AS-45499-001-001 (PDF)
- Drawing (PDF)

Test Summary TS-94550-001-001 (PDF)
- Product Specification PS-94550-001-001 (PDF)

RoHS Certificate of Compliance (PDF)

Agency Certification

UL

E29179

Application tooling part link

Application Tooling Part Link

62201-7500

General

Product Family

Series

Application

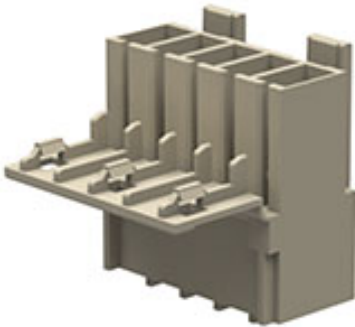
Comments

Crimp Housings

94550

Power, Wire-to-Board

This Molex product is manufactured from material that has the following ratings, tested by independent agencies :. a) A Glow Wire Ignition Temperature (GWIT) of at least 775 deg C per IEC 60695-2-13.. b) A Glow Wire Flammability Index (GWFI) above 850 deg C per IEC 60695-2-12.and hence complies with the requirements set out in the International Standard IEC 60335-1 5th edition - household and similar electrical appliances - safety; section 30 Resistance to heat and fire.<P><P>The customers using this product must determine its suitability for use in their particular application through testing or other acceptable means as described in end-product glow-wire flammability test standard IEC 60695-2-11 and any applicable product end-use standard(s).<P>If it is determined during the customer's evaluation of suitability, that higher performance is required, please contact Molex for possible product options., This Molex product is manufactured from material that has the following ratings, tested by independent agencies :. a) A Glow Wire Ignition Temperature (GWIT) of at least 775 deg C per IEC 60695-2-13.. b) A Glow Wire Flammability Index (GWFI) above 850 deg C per IEC 60695-2-12.and hence complies with the requirements set out in the International Standard IEC 60335-1 5th edition - household and similar electrical appliances - safety; section 30 Resistance to heat and fire.<P><P>The customers using this product must determine its suitability for use in their particular application through testing or other acceptable means as described in end-product glow-wire flammability test standard IEC 60695-2-11 and any applicable product end-use standard(s).<P>If it is determined during the customer's evaluation of suitability, that higher performance is required, please contact Molex for possible product options.



Series image - Reference only

EU ELV

Compliant

EU RoHS

Compliant

REACH SVHC

Not Contained Per - ED/71/2019 (16 July 2019)

Halogen-Free

Status

Not Low-Halogen

For more information, please visit [Contact US](#)

China ROHS

ELV

RoHS Phthalates

China RoHS

Not Relevant

Compliant

Not Contained

Search Parts in this Series

94550 Series

Mates With

Rast 5 Headers, [90858](#) Vertical Header

Use With

[94518](#) Crimp Terminal

Application Tooling | [FAQ](#)

Tooling specifications and manuals are found by selecting the products below. Crimp Height Specifications are then contained in the Application Tooling Specification document.

Global

Description

Product #

Manual Arbor Press, [622017500](#)
RAST 5

Overview	<u>RAST 5 Connector System</u>
Product Name	RAST 5
UPC	883906054885
Physical	
Circuits (maximum)	4
Color - Resin	Natural
Flammability	94V-2
Gender	Receptacle
Glow-Wire Capable	Yes
Lock to Mating Part	Yes
Material - Resin	Nylon
Net Weight	3.460/g
Number of Rows	1
Packaging Type	Bag
Panel Mount	No
Pitch - Mating Interface	5.00mm
Pitch - Termination Interface	5.00mm
Polarized to Mating Part	Yes
Ports	1
Stackable	No
Temperature Range - Operating	-40° to +85°C
Solder Process Data	
Lead-freeProcess Capability	N/A
Material Info	
Reference - Drawing Numbers	
Application Specification	AS-45499-001-001
Product Specification	PS-94550-001-001
Sales Drawing	SD-94550-008
Test Summary	TS-94550-001-001

This document was generated on 09/26/2019

PLEASE CHECK WWW.MOLEX.COM FOR LATEST PART INFORMATION

Mouser Electronics

Authorized Distributor

Click to View Pricing, Inventory, Delivery & Lifecycle Information:

Molex:

[94550-4102](#) [94550-4104](#) [94550-4106](#) [94550-9502](#)