

NOTES

- ALL DIMENSIONS ARE IN $\frac{\text{INCHES}}{[\text{MILLIMETERS}]}$
- DIMENSIONS APPEARING IN TABLE ARE AS FOLLOWS:
 - AS SUPPLIED
 - AFTER UNRESTRICTED RECOVERY

3 COATING (ADHESIVE): IS OPTIONAL AS SUPPLIED DIMENSIONS APPEARING IN TABLE ARE FOR UNCOATED PARTS. WHEN COATING IS ADDED, ENTRY DIAMETER WILL BE REDUCED BY .06 [1.5] MAX.

4. ORDERING INFORMATION

222D274 -4 -03 /42 -0

BASE PART NUMBER _____

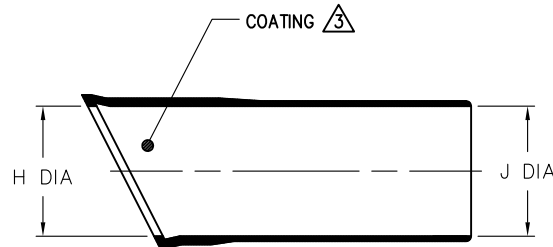
MATERIAL DASH NUMBER _____

-4 POLYOLEFIN, FLEXIBLE (RT-1304)

MODIFICATION NUMBER _____

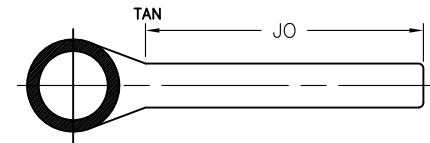
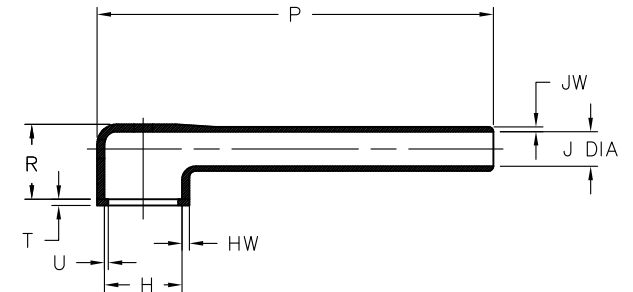
ADHESIVE SLASH NUMBER _____
SEE COMPATIBILITY CHART BELOW

COLOR DESIGNATOR _____



AS SUPPLIED

| DIMENSIONING AND TOLERANCING PER ASME Y14.5M (ISO STANDARDS) | | |
|--|---------------------------|-----------|
| REVISIONS | | |
| LTR | DESCRIPTION | DATE |
| A | REVISED PER ECO-12-009120 | 5/14/2012 |



AFTER UNRESTRICTED RECOVERY

TABLE OF DIMENSIONS

| PART DESCRIPTION | H | | J | | P | R | T | JO | U | HW | JW |
|------------------|----------------|----------------|----------------|---------------|-----------------|----------------|--------------|----------------|---------------|---------------|----------------|
| | MIN | MAX | MIN | MAX | | | | | | | |
| | a | b | a | b | | | | | | | |
| 222D274-4-03 | 2.50 [63,5] | 1.62 [41,1] | 2.50 [63,5] | .56 [14,2] | 4.50 [114,3] | 1.16 [29,6] | .12 [3,0] | 2.48 [62,9] | .065 [1,6] | .09 [2,28] | .055 [1,39] |

COMPATIBILITY CHART

| MATERIAL DASH NO. | ADHESIVE (COATING) SLASH NO. | ADHESIVE (COATING) S NO. |
|-------------------|------------------------------|--------------------------|
| -4 | /42; | S-1017; |
| | | |
| | | |
| | | |
| | | |
| | | |

UNLESS OTHERWISE SPECIFIED DIMENSIONS ARE INCHES. METRIC DIMENSIONS ARE IN BRACKETS.

DECIMAL TOLERANCES
 .XXX ± 0.005 [0.13 mm]
 .XX ± 0.01 [0.25 mm]
 .X ± 0.1 [0.50 mm]
 ANGLE TOLERANCE
 .X ± 1 DEG.

TYCO ELECTRONICS RESERVES THE RIGHT TO AMEND THIS DRAWING AT ANY TIME. USERS SHOULD EVALUATE THE SUITABILITY OF THE PRODUCT FOR THEIR APPLICATION.

© 2009-2012 Tyco Electronics Corporation. All rights reserved.

DRAWN
MMAZARIEGOS

APPROVED
DHURRELL

THIRD ANGLE PROJECTION



TE Connectivity

TITLE
BOOT, 90 DEGREE,
WITH LIP

SIZE B CODE IDENT. NO. 06090 DWG. NO. 222D274-4-03

DO NOT SCALE THIS DRAWING SHEET 1 OF 1

If this document is printed it becomes uncontrolled. Check for the latest revision

Mouser Electronics

Authorized Distributor

Click to View Pricing, Inventory, Delivery & Lifecycle Information:

[TE Connectivity:](#)

[222D274-4-03/42-0](#)